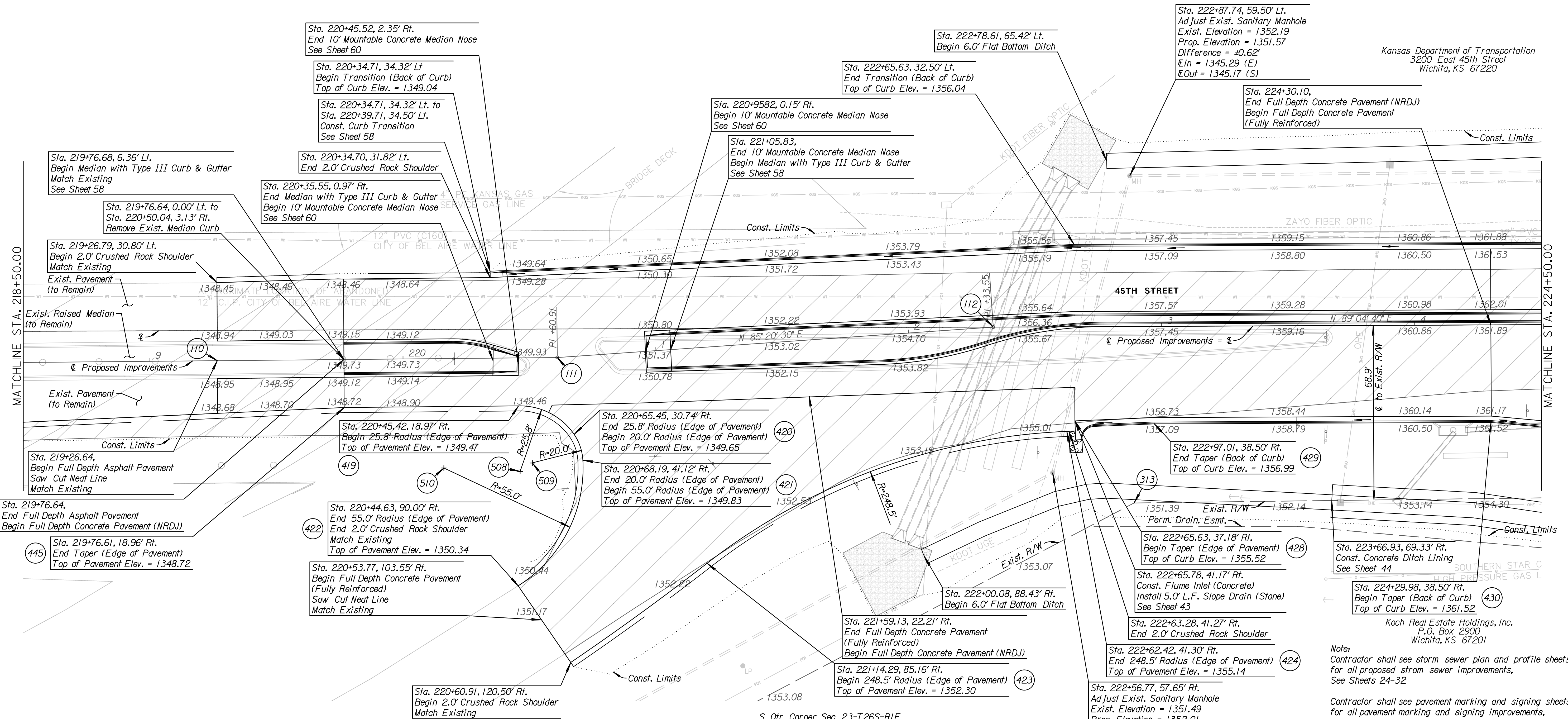


SSD = 416'  
K = 50  
160' V.C.



SW Corner Sec. 23-T26S-R1E  
Found Capped 3/4" Rebar  
Sta. 126+48.00, 0.00' & Sta. 226+23.22, 0.00'  
Northing = 1715348.2698  
Easting = 1659661.8140

- Chiseled \*\* 8" south of the north end of the RCB hubguard
- Chiseled \*\* 14" south of the north end of the RCB hubguard
- Chiseled \*\* 9" north of the south end of the RCB hubguard
- Chiseled \*\* 18" north of the south end of the RCB hubguard

S Qtr. Corner Sec. 22-T26S-R1E  
Found 1/2" Pipe 4" below Asphalt Surface  
Sta. 200+00.00, 0.00'  
Northing = 1715306.0632  
Easting = 1657039.5505

- PK nail in the top of an end hedge (former brace) post
- 20d nail in the top of a treated wood pipeline marker post
- 3 nails in the north face of a power pole

S Qtr. Corner Sec. 23-T26S-R1E  
Found 3/4" Pipe w/ Sedgwick County Cap 3/4" below Asphalt Surface  
Sta. 252+66.34, 0.00'  
Northing = 1715368.5770  
Easting = 1662304.5809

- 3 nails in southeast face of hedge fence post
- 3 nails in the north face of a treated wood fence post
- PK nail in the west face of power pole
- 3 nails in the northeast face of hedge fence corner post
- Center of pavement

31.56' NNE  
63.88' SW  
37.62' S  
39.67' S  
±2.0' S

Note:  
Contractor shall see storm sewer plan and profile sheets for all proposed storm sewer improvements, See Sheets 24-32

Contractor shall see pavement marking and signing sheets for all pavement marking and signing improvements, See Sheets 93-99

Sta. 219+26.64 to Sta. 219+76.64, existing asphalt in the gutter pan of the curb & gutter shall be removed. The proposed asphalt pavement shall be paved to match the existing high edge of curb.

Any damage to the existing pavement, existing curb & gutter, or existing median called out to remain, shall be fixed by the Contractor at their own expense.

**Tran Systems**  
245 NORTH WACO  
SUITE 222  
WICHITA, KS 67202  
PHONE: 316-303-3000  
FAX: 316-303-0156

CONSULTANTS:

**45TH & HILLSIDE  
INTERSECTION IMPROVEMENT**  
WICHITA, KANSAS  
**WICHITA**

REVISIONS:	DESCRIPTION	MARK	DATE

PROJ NO: 87 N-0616-01  
SCALE: 1"=20'  
DATE: 10/9/2017  
DESIGNED BY: TAU  
DRAWN BY: TAU  
CHECKED BY: MDB

SHEET TITLE:  
**45TH STREET  
PLAN & PROFILE  
STA. 218+50.00 TO  
STA. 224+50.00**

SHEET NO.  
**18**  
SHEET 18 OF 166