

Note:
 Contractor shall see storm sewer plan and profile sheets for all proposed storm sewer improvements, See Sheets 24-32

Contractor shall see pavement marking and signing sheets for all pavement marking and signing improvements, See Sheets 93-99

Railroad crossing panels at Sta. 230+77.16, must be replaced prior to the placement of the railroad approaches. Railroad panels shall be removed by the U.P.R.R., the track profile will match existing.

The Contractor shall install expansion material between the concrete pavement and the railroad crossing panels. Typical for both sides of the railroad crossing panels. For information, See Sheet 62

Exist. railroad crossing arm assembly at Sta. 230+50.00, 18.64' Rt. and Sta. 231+06.01, 23.50' Rt. shall be replaced by the U.P.R.R.

The DOT number for the 45th Street railroad crossing is 595024G

The proposed crossings shall be 10W concrete cross surfaces and shall extend a minimum of 3.0' beyond the back of curb. Precast panels are 8'-1 1/2' in length and the required length for the 45th Street crossing, DOT 595024G, is 65.0'.

Temporary traffic control must not circumvent existing or proposed warning devices and must be in accordance with the latest edition of the MUTCD. A detour must be provided during the installation of the concrete surface panels.

The 45th Street railroad crossing requires a gate length of 18.75'.

The Contractor shall construct all embankment material to accommodate the proposed signal house and gates.

CONSULTANTS:

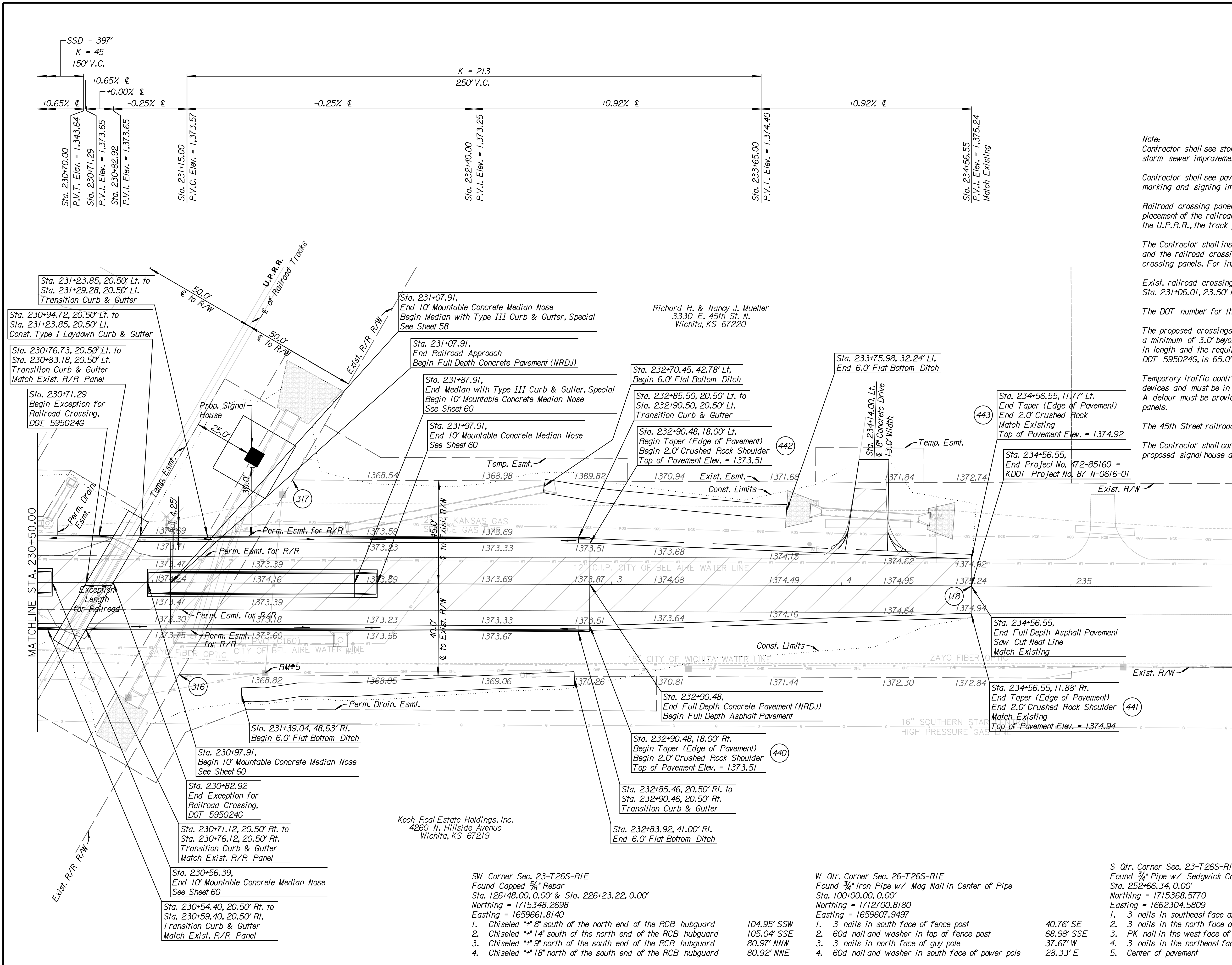
**45TH & HILLSIDE
 INTERSECTION IMPROVEMENT**
 WICHITA, KANSAS

REVISIONS:	MARK	DATE	DESCRIPTION

PROJ NO: 87 N-0616-01
 SCALE: 1"=20'
 DATE: 10/9/2017
 DESIGNED BY: TAU
 DRAWN BY: TAU
 CHECKED BY: MDB

SHEET TITLE:
**45TH STREET
 PLAN & PROFILE**
 STA. 230+50.00 TO
 STA. 234+56.55

SHEET NO.
20
 SHEET 20 OF 166



Richard H. & Nancy J. Mueller
 3330 E. 45th St. N.
 Wichita, KS 67220

Koch Real Estate Holdings, Inc.
 4260 N. Hillside Avenue
 Wichita, KS 67219

SW Corner Sec. 23-T26S-R1E
 Found Capped 3/4" Rebar
 Sta. 126+48.00, 0.00' & Sta. 226+23.22, 0.00'
 Northing = 1715348.2698
 Easting = 1659661.8140

1. Chiseled ** 8" south of the north end of the RCB hubguard
2. Chiseled ** 14" south of the north end of the RCB hubguard
3. Chiseled ** 9" north of the south end of the RCB hubguard
4. Chiseled ** 18" north of the south end of the RCB hubguard

- 104.95' SSW
- 105.04' SSE
- 80.97' NW
- 80.92' NNE

W Qtr. Corner Sec. 26-T26S-R1E
 Found 3/4" Iron Pipe w/ Mag Nail in Center of Pipe
 Sta. 100+00.00, 0.00'
 Northing = 1712700.8180
 Easting = 1659607.9497

1. 3 nails in south face of fence post
2. 60d nail and washer in top of fence post
3. 3 nails in north face of guy pole
4. 60d nail and washer in south face of power pole

- 40.76' SE
- 68.98' SSE
- 37.67' W
- 28.33' E

S Qtr. Corner Sec. 23-T26S-R1E
 Found 3/4" Pipe w/ Sedgwick County Cap 3/4" below Asphalt Surface
 Sta. 252+66.34, 0.00'
 Northing = 1715368.5770
 Easting = 1662304.5809

1. 3 nails in southeast face of hedge fence post
2. 3 nails in the north face of a treated wood fence post
3. PK nail in the west face of power pole
4. 3 nails in the northeast face of hedge fence corner post
5. Center of pavement

- 31.56' NNE
- 63.88' SW
- 37.62' S
- 39.67' S
- ±2.0' S

BM#5
 Railroad spike in north face of first power pole
 on the south side of the railroad tracks
 Northing = 1715313.1870
 Easting = 1660187.8441
 39.12' Rt., Sta. 231+49.24, Elev. = 1368.97