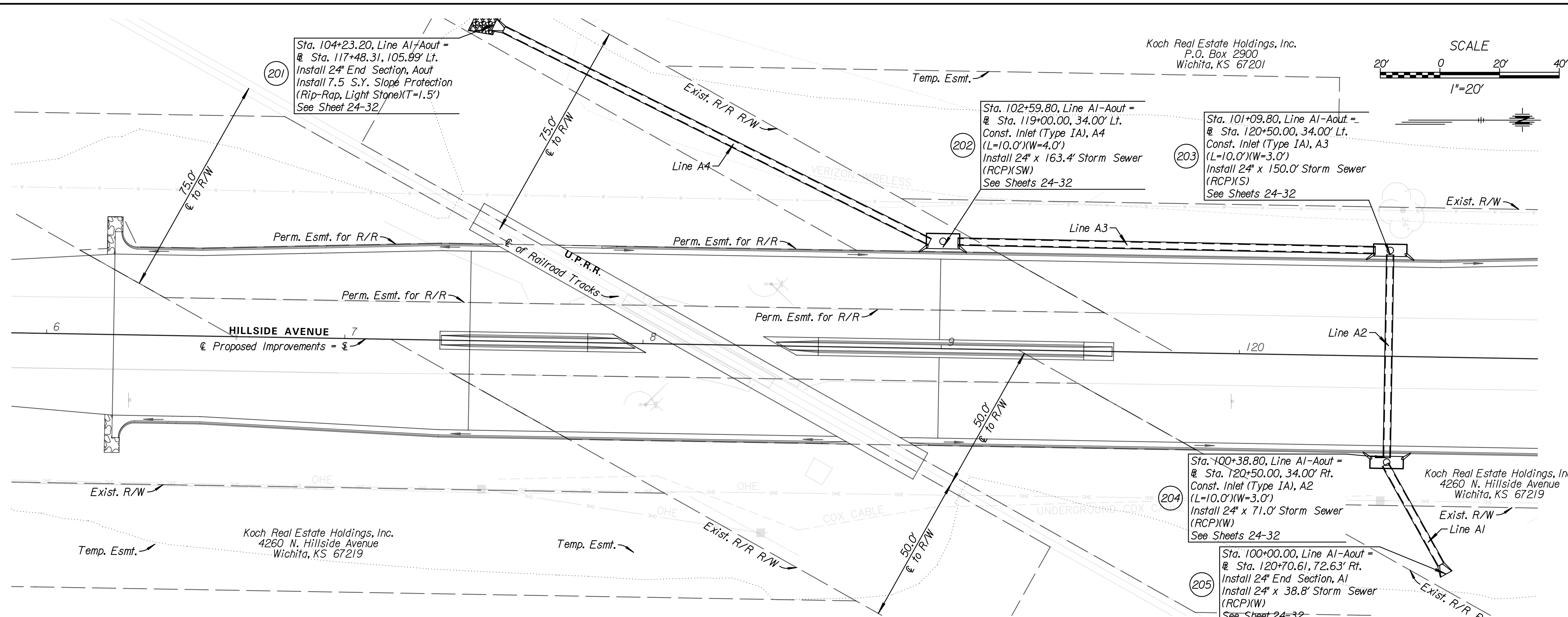


Note:
The Contractor shall coordinate with the utility companies prior to construction in the area to locate any existing utilities not shown on the plans, or utilities that have been relocated due to the construction project.

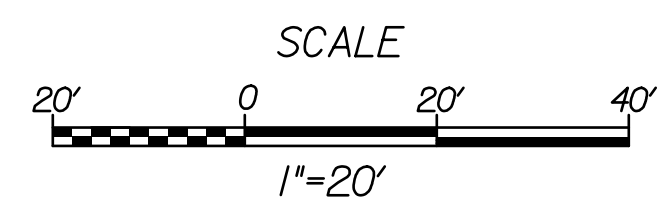
Any storm sewer adjacent to the curb & gutter or under any proposed pavement on mainline, sideroads or entrances shall be backfilled in accordance with the City of Wichita Specifications unless otherwise noted on the plans or by the Engineer.

The Contractor shall coordinate with the U.P.R.R. prior to installing storm sewer Line A4, 18" End Section, and proposed Rip-Rap Stone, in case the U.P.R.R. shall want an individual present upon the excavation for the storm sewer.

The DOT number for the Hillside Avenue railroad crossing is 595025N.



Koch Real Estate Holdings, Inc.
P.O. Box 2900
Wichita, KS 67201

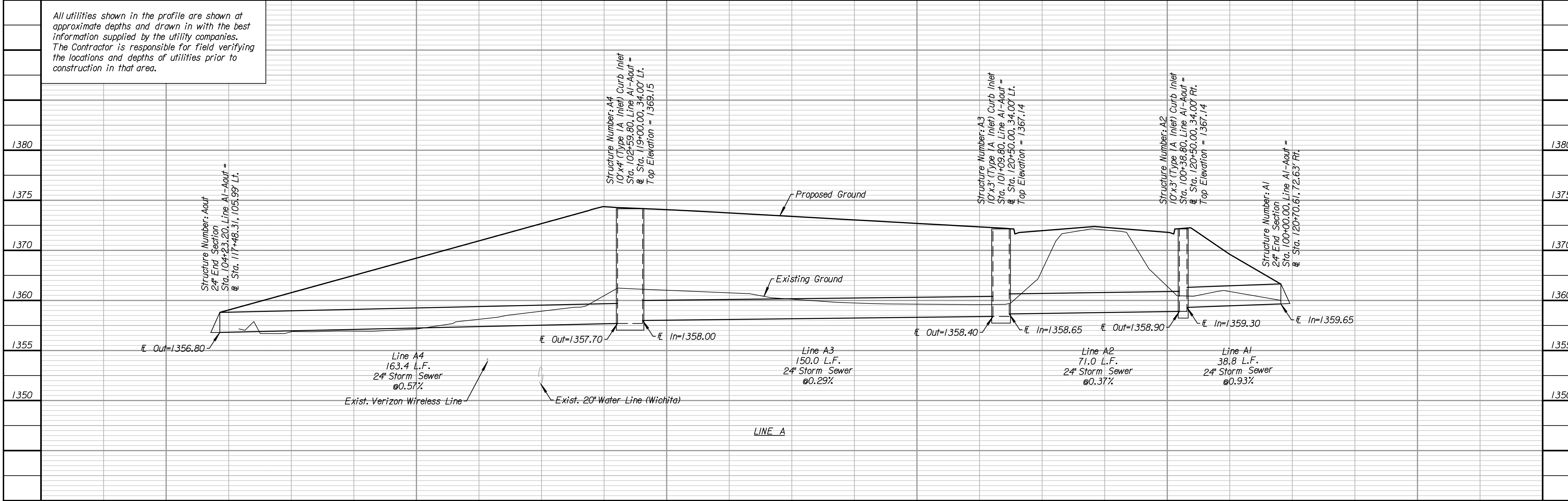


Tran Systems
245 NORTH WACO
SUITE 222
WICHITA, KANSAS 67202
PHONE: 316-303-3000
FAX: 316-303-0166

CONSULTANTS:

45TH & HILLSIDE INTERSECTION IMPROVEMENT
WICHITA, KANSAS
CITY OF WICHITA

All utilities shown in the profile are shown at approximate depths and drawn in with the best information supplied by the utility companies. The Contractor is responsible for field verifying the locations and depths of utilities prior to construction in that area.



REVISIONS:	MARK	DATE	DESCRIPTION

PROJ NO: 87 N-0616-01
SCALE: 1"=20'
DATE: 10/9/2017
DESIGNED BY: TAU
DRAWN BY: TAU
CHECKED BY: MDB

SHEET TITLE:
HILLSIDE AVENUE STORM SEWER: LINE A

SHEET NO.
24

SHEET 24 OF 166