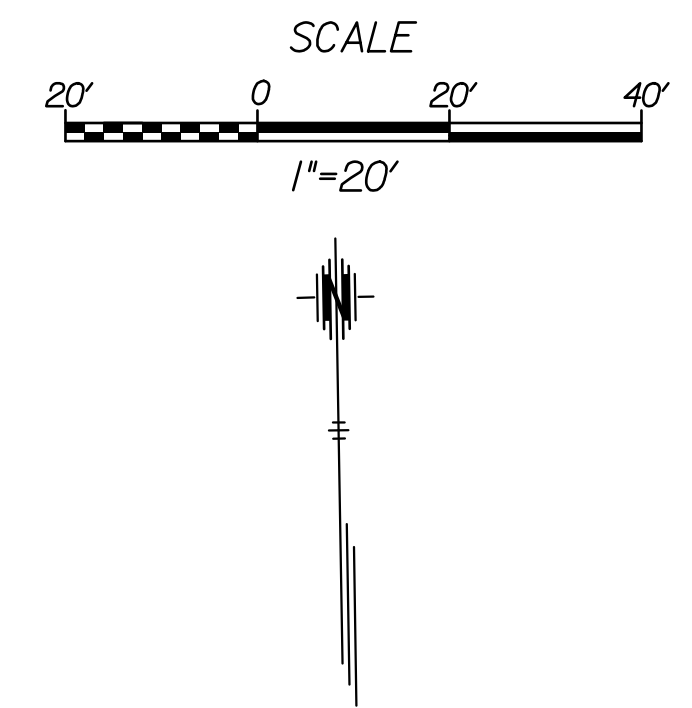
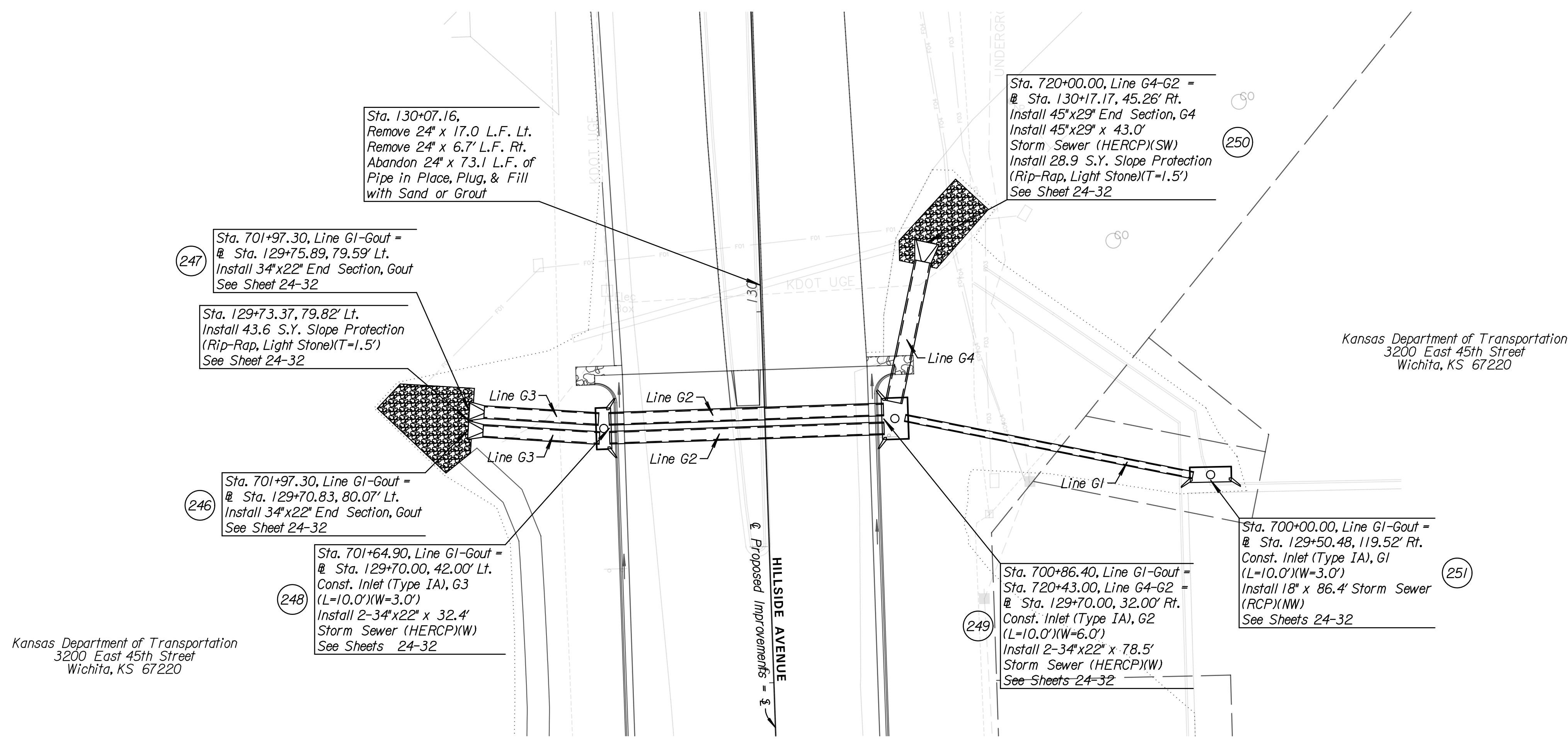


Note:
The Contractor shall coordinate with the utility companies prior to construction in the area to locate any existing utilities not shown on the plans, or utilities that have been relocated due to the construction project.

Any storm sewer adjacent to the curb & gutter or under any proposed pavement on mainline, side roads or entrances shall be backfilled in accordance with the City of Wichita Specifications unless otherwise noted on the plans or by the Engineer.

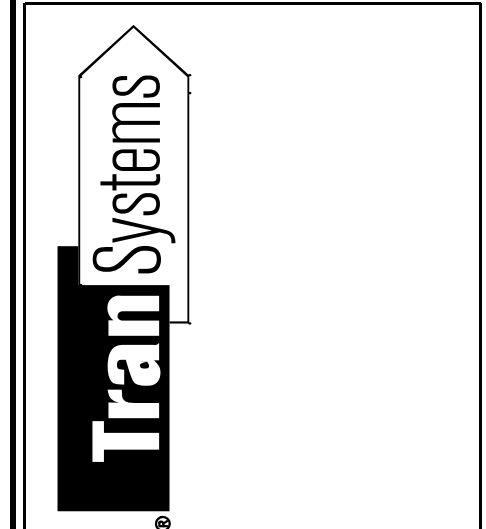
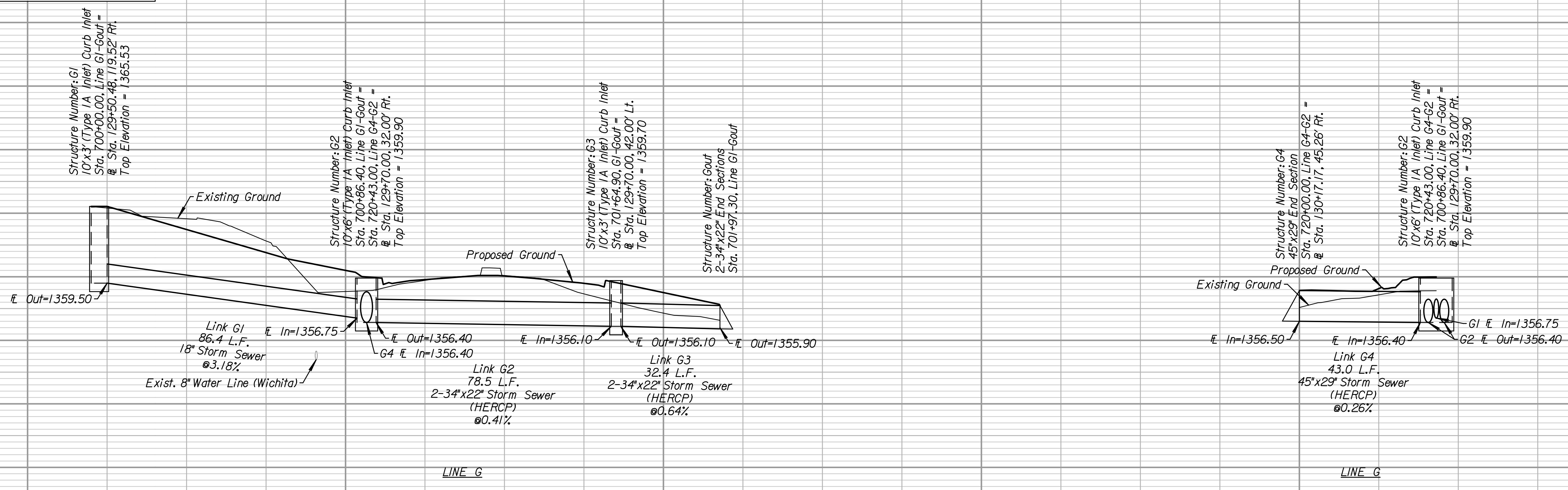
Fill sand or fill grout for the abandoned storm sewer shall be considered SUBSIDIARY to the bid item "Pipe Abandoned in Place"



Kansas Department of Transportation
3200 East 45th Street
Wichita, KS 67220

Kansas Department of Transportation
3200 East 45th Street
Wichita, KS 67220

All utilities shown in the profile are shown at approximate depths and drawn in with the best information supplied by the utility companies. The Contractor is responsible for field verifying the locations and depths of utilities prior to construction in that area.



CONSULTANTS:

45TH & HILLSIDE INTERSECTION IMPROVEMENT

REVISIONS:	MARK	DATE	DESCRIPTION

PROJ NO: 87 N-0616-01
SCALE: 1"=20'
DATE: 10/9/2017
DESIGNED BY: TAU
DRAWN BY: TAU
CHECKED BY: MDB

SHEET TITLE:
HILLSIDE AVENUE STORM SEWER: LINE G

SHEET NO.
27
SHEET 27 OF 166