

CONSULTANTS:

**45TH & HILLSIDE
 INTERSECTION IMPROVEMENT**

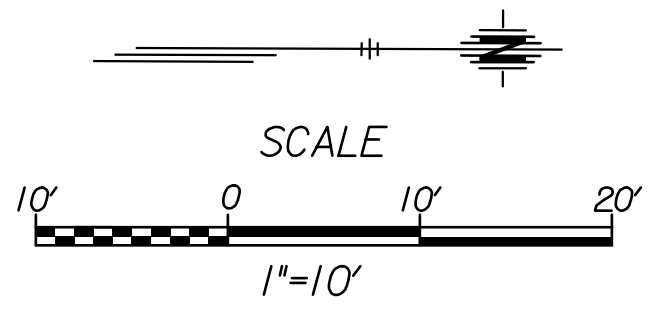


REVISIONS:	MARK	DATE	DESCRIPTION

PROJ NO: 87 N-0616-01
 SCALE: 1"=10'
 DATE: 10/9/2017
 DESIGNED BY: TAU
 DRAWN BY: TAU
 CHECKED BY: MDB

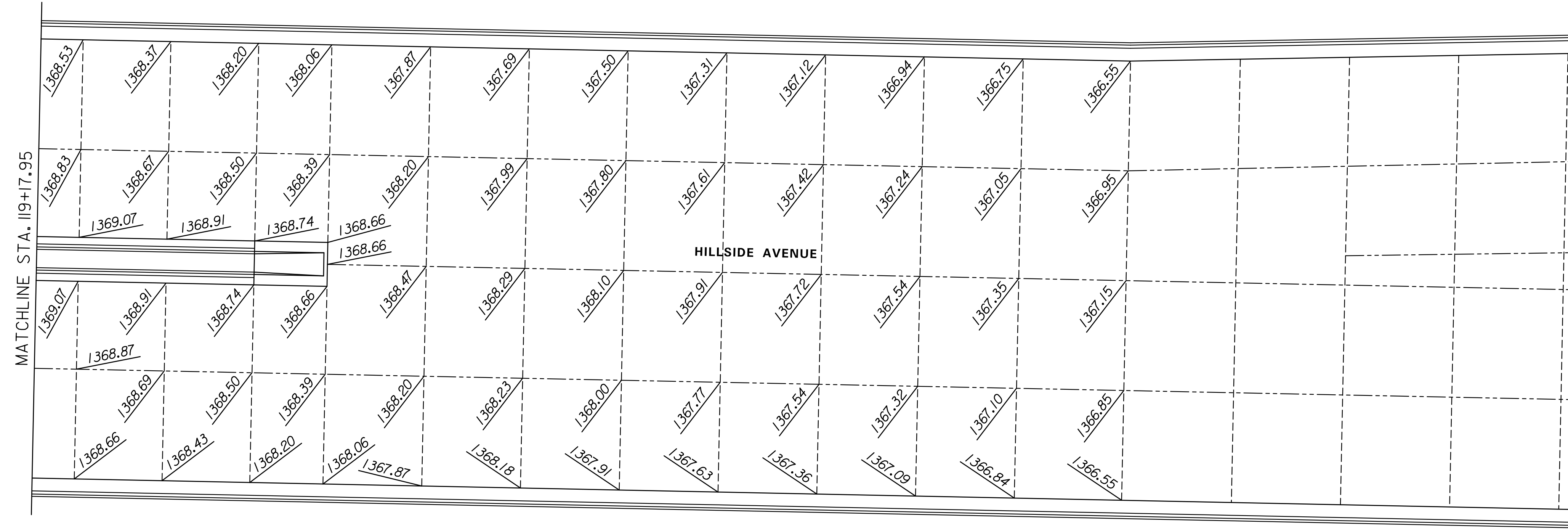
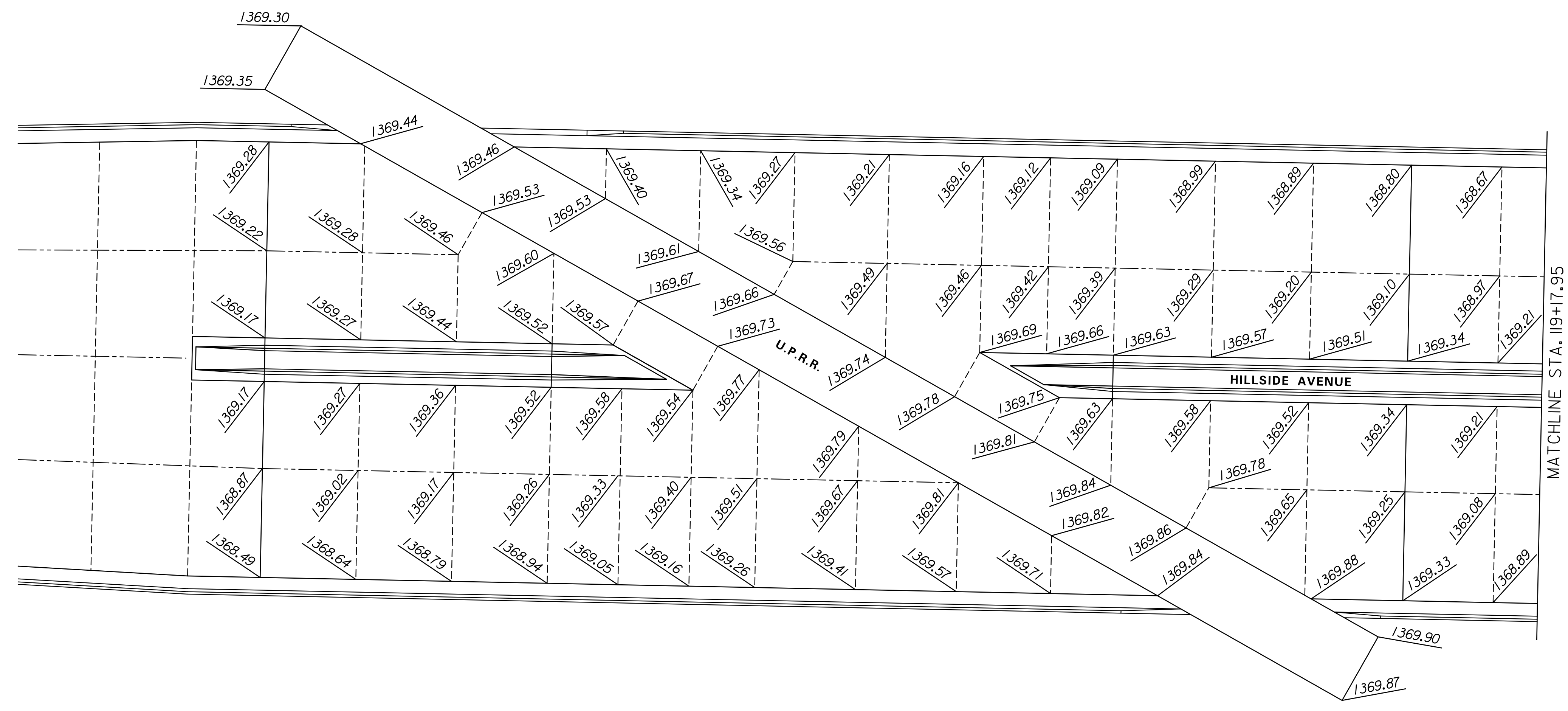
**SHEET TITLE:
 PAVEMENT
 JOINTING
 DETAILS**

SHEET NO.
51
 SHEET 51 OF 166



- LEGEND**
- Longitudinal Joint
 - - - Contraction Joint
 - Expansion Joint

Note:
 Concrete pavement for the U.P.R.R. approach shall be "Concrete Railroad Approach" unless otherwise noted.
 Pavement joints shall be continue through curb & gutter and match joint patterns where possible.
 For information on Hillside Avenue Jointing lengths, See Sheets 45-47



taummed 10/9/2017 1:11:35 PM c:\transtransystems\paw\taummed\0258264C-JNT-M01-406.DGN