

CONSULTANTS:

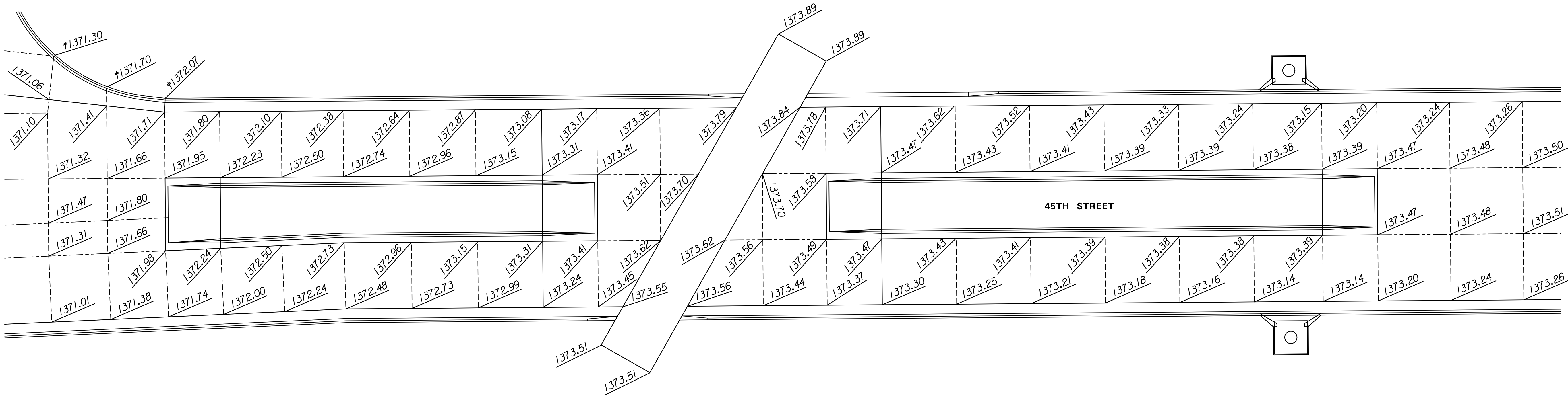
45TH & HILLSIDE
 INTERSECTION IMPROVEMENT
 WICHITA, KANSAS


REVISIONS:	MARK	DATE	DESCRIPTION

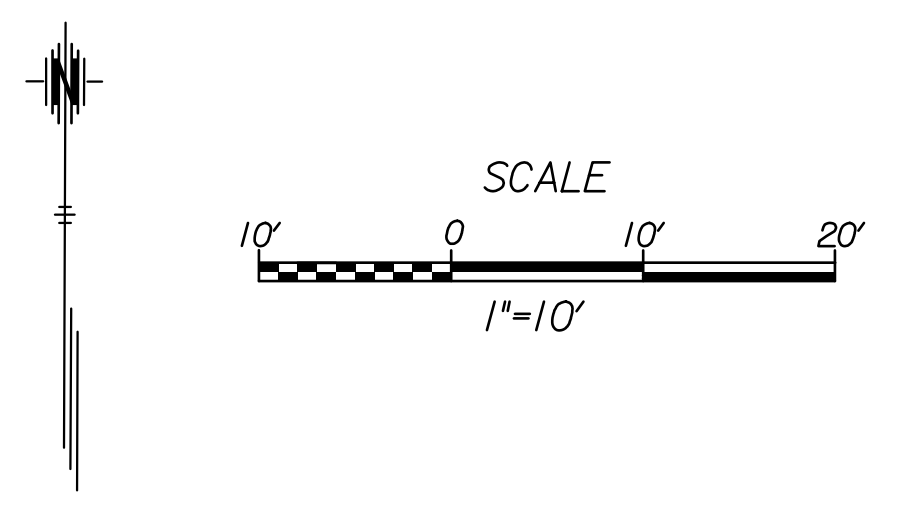
PROJ NO: 87 N-0616-01
 SCALE: 1"=10'
 DATE: 10/9/2017
 DESIGNED BY: TAU
 DRAWN BY: TAU
 CHECKED BY: MDB

SHEET TITLE:
**PAVEMENT
 JOINTING
 DETAILS**

SHEET NO.
55
 SHEET 55 OF 166



45TH STREET RAILROAD APPROACH JOINTING



LEGEND

- Longitudinal Joint
- Contraction Joint
- Expansion Joint

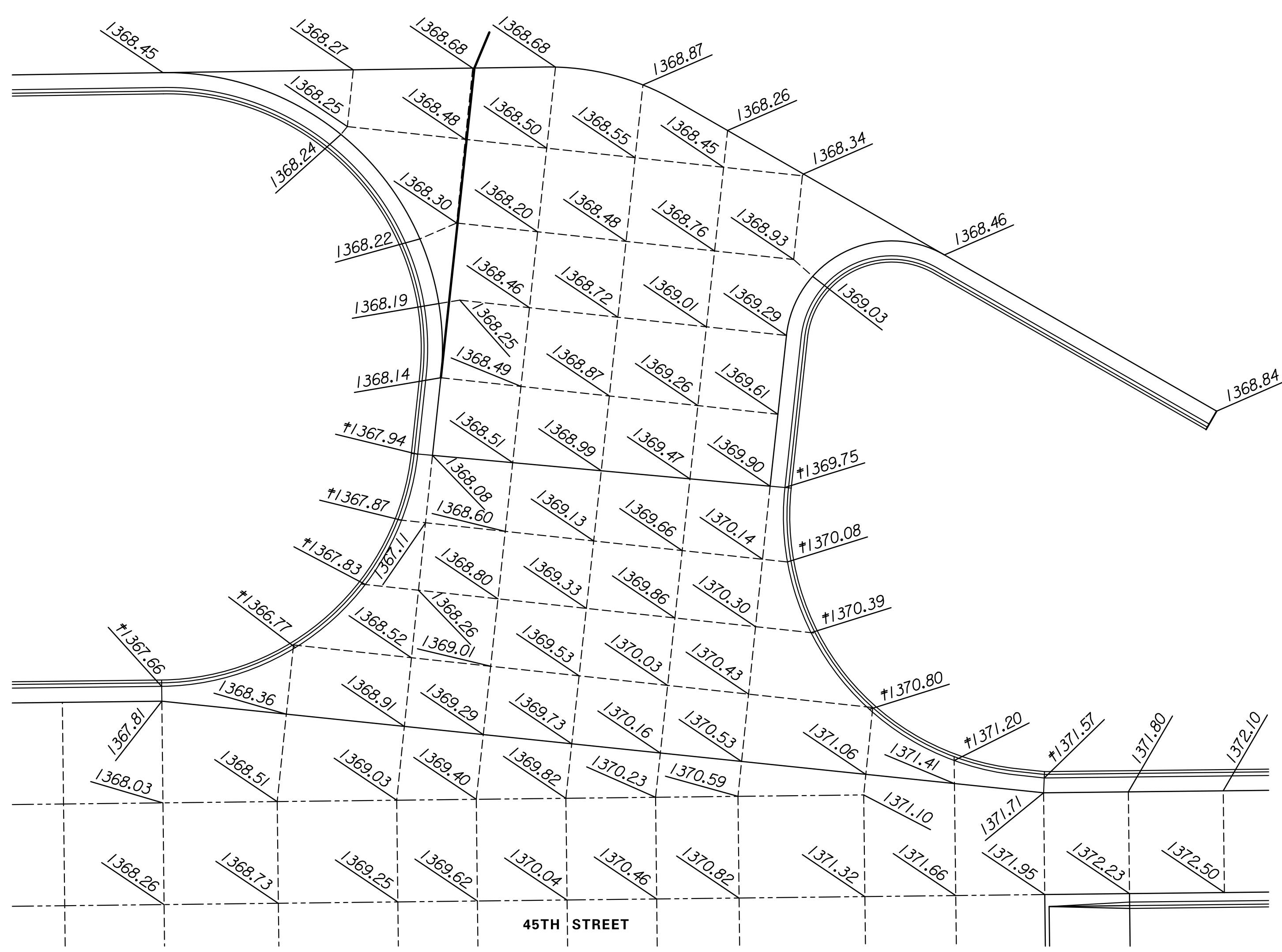
Note:
 Concrete pavement for the U.P.R.R. approach shall be "Concrete Railroad Approach" unless otherwise noted.

Concrete pavement for the KDOT entrance shall be "Concrete Pavement (9") (Reinforced)".

Pavement joints shall be continue through curb & gutter and match joint patterns where possible.

For information on 45th Street Jointing lengths, See Sheets 45thJoint

†Elevations are to the flow line of the curb and gutter



45TH STREET KDOT ENTRANCE JOINTING

10/9/2017 1:15:52 PM - c:\transtrans\paw\taum\media\0258264C-JNT-M01-404.DGN