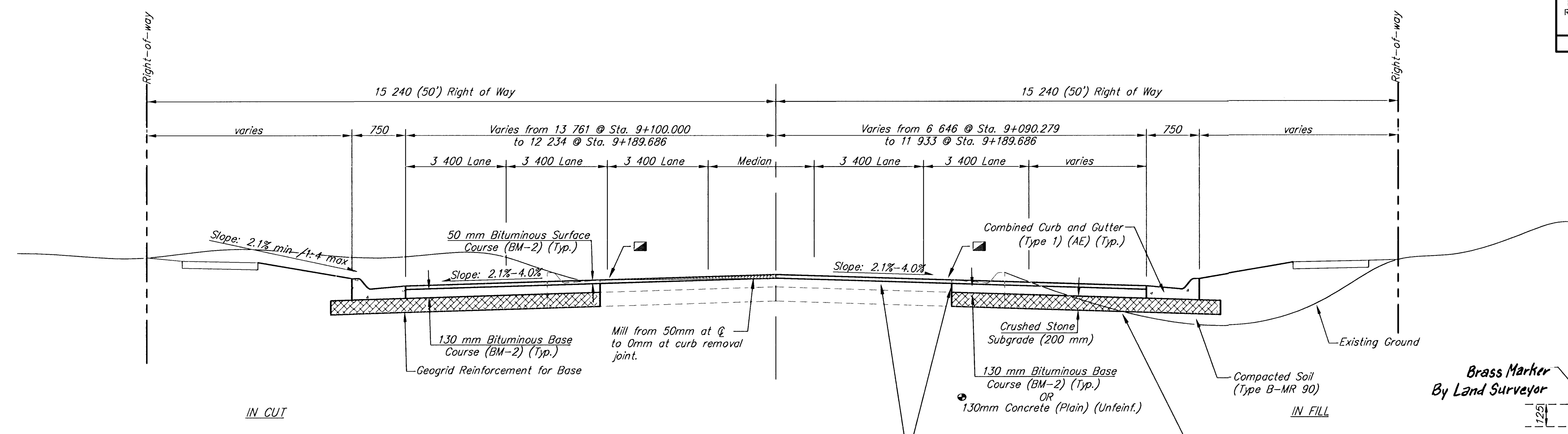


| FHWA REGION NO. | STATE | PROJECT NUMBER | FISCAL YEAR | SHEET NUMBER | TOTAL SHEETS |
|-----------------|--------|----------------|-------------|--------------|--------------|
| 7 | KANSAS | 87N-0128-01 | | 3 | 118 |

| | |
|--------------------|--|
| DATE | |
| BY | |
| REFERENCES NOTED | |
| REFERENCES CHECKED | |

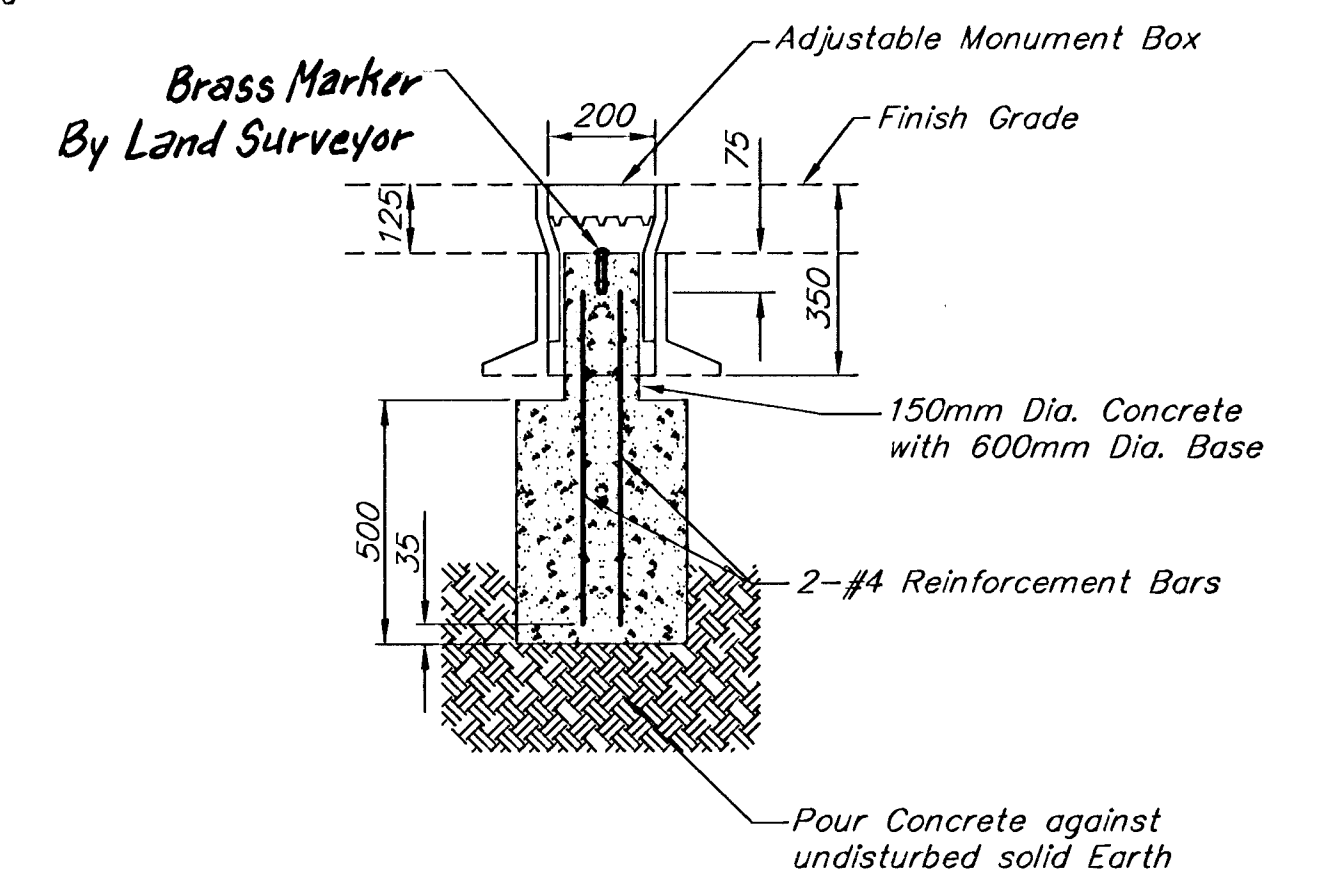


TYPICAL SECTION
9+090.279 TO 9+189.686

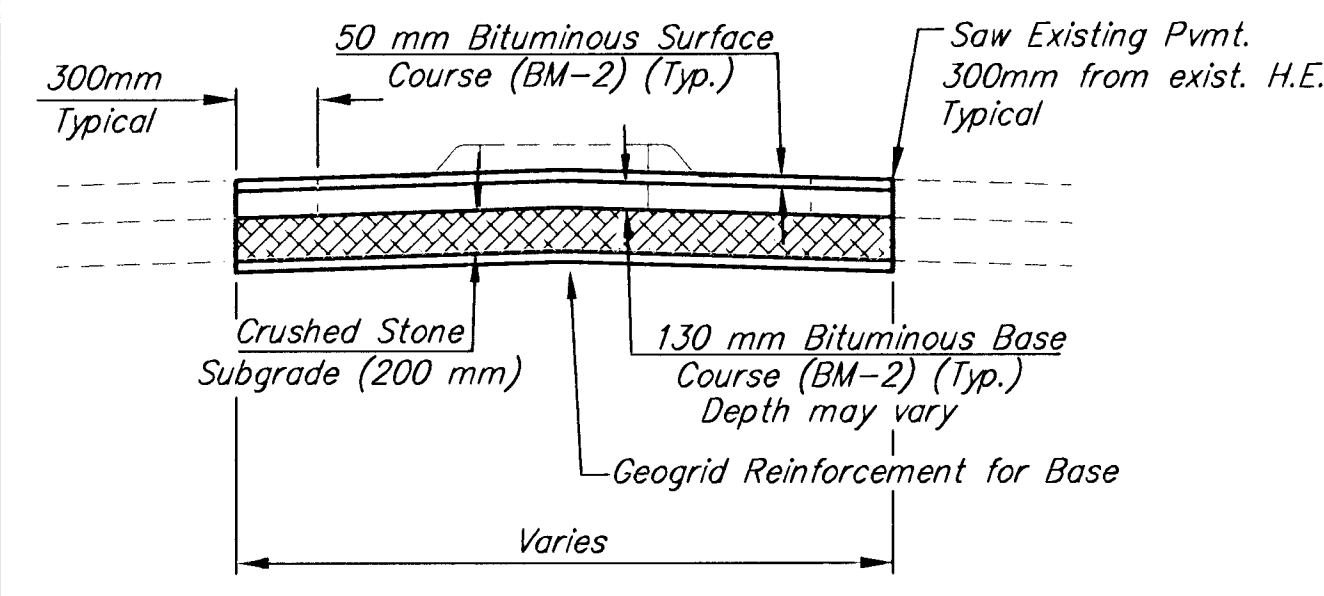
■ All existing pavement adjacent to new pavement surface where the old pavement is to be overlaid with 50mm Bituminous Surface may be milled per Detail, Sheet 8. Typical at all locations described above.

Remove existing Curb & Gutter. existing pavement surface to remain as indicated. Existing surface to be overlaid or milled and overlaid as indicated on plan sheets. (Typical)

● When concrete base is used, it shall be paid as the bid item "A.C. Pavement 180mm".



MONUMENT BOX DETAIL

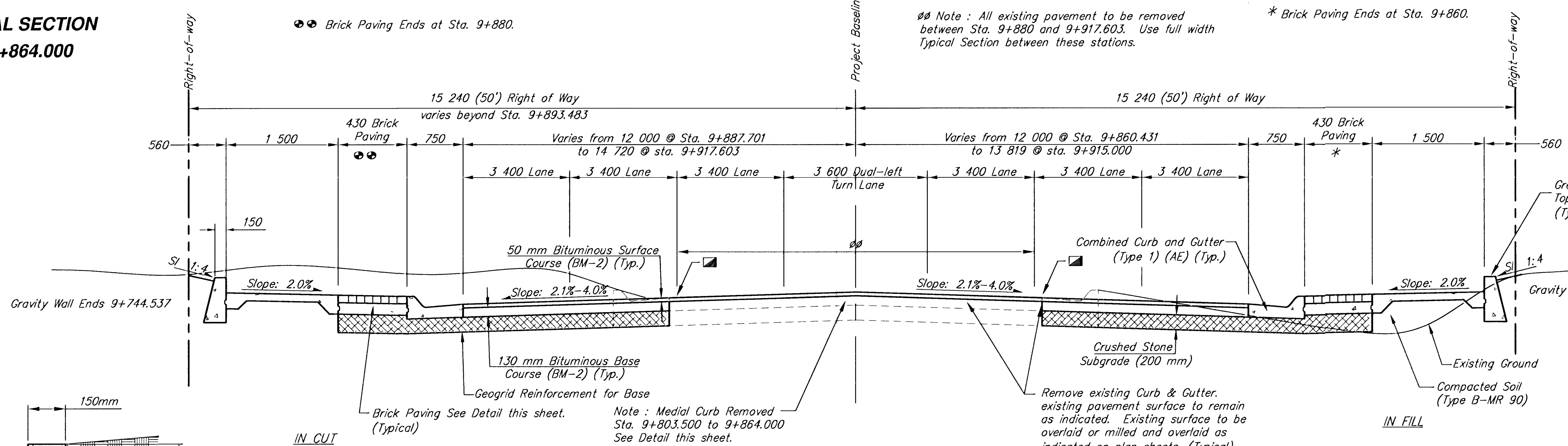


MEDIAN REMOVAL SECTION
9+803.500 TO 9+864.000

●● Brick Paving Ends at Sta. 9+880.

* Brick Paving Ends at Sta. 9+860.

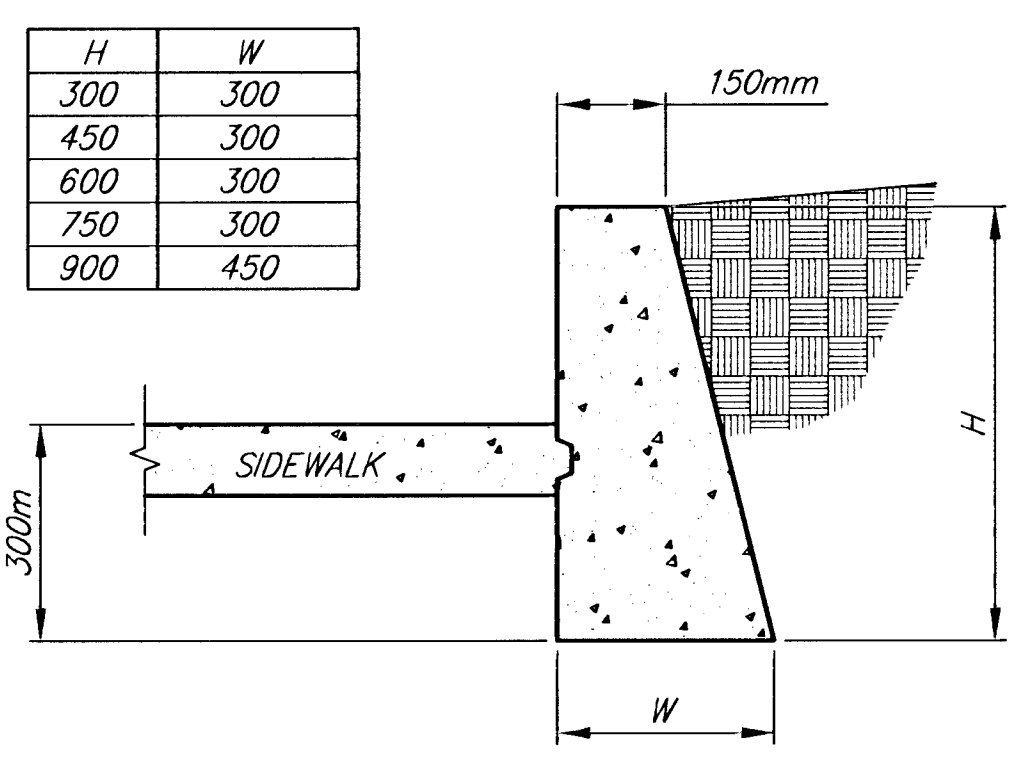
∅∅ Note : All existing pavement to be removed between Sta. 9+880 and 9+917.603. Use full width Typical Section between these stations.



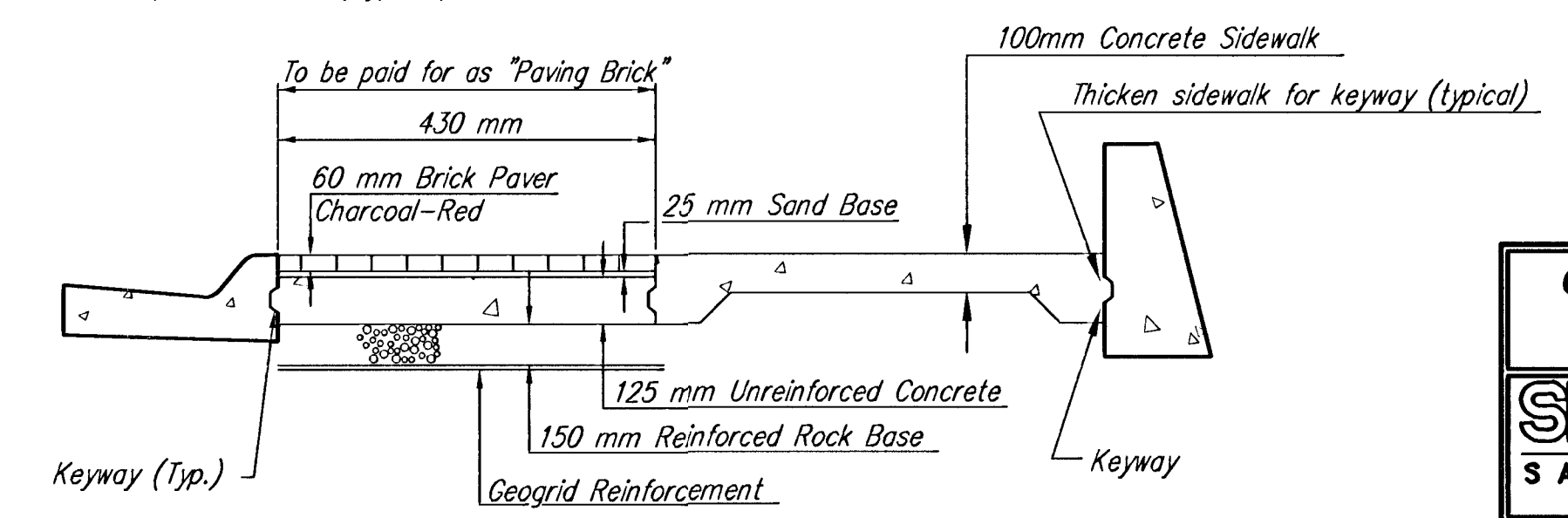
TYPICAL SECTION
9+212.655 TO 9+260.000
9+419.000 TO 9+536.000
9+706.000 TO 9+917.603

Note : Medial Curb Removed Sta. 9+803.500 to 9+864.000 See Detail this sheet.

Remove existing Curb & Gutter. existing pavement surface to remain as indicated. Existing surface to be overlaid or milled and overlaid as indicated on plan sheets. (Typical)



GRAVITY WALL DETAIL
(CONCRETE)



BRICK PAVER SURFACE DETAIL

NOTE: Construction of the interlocking precast concrete paving stones shall conform to special provision 90P-3956.

CENTRAL AND RIDGE ROAD IMPROVEMENTS
TYPICAL SECTIONS

SRB 924 NORTH MAIN WICHITA, KANSAS 67203 315-254-8008 315-254-4821
http://www.tekst.com/~srb E-Mail: srbs@tekst.com

SAVOY, RUGGLES & BOHM, P.A.
ENGINEERING & SURVEYING

PROJECT NUMBER
472-76-245-83057-000-000-001

| | | | | | |
|---------------|--------|--------|------|---------|---------|
| DATE | DESIGN | REVIEW | DATE | UTILITY | SRB JOB |
| Dec. 13, 2000 | JRA | | | | 1218T |

3
118