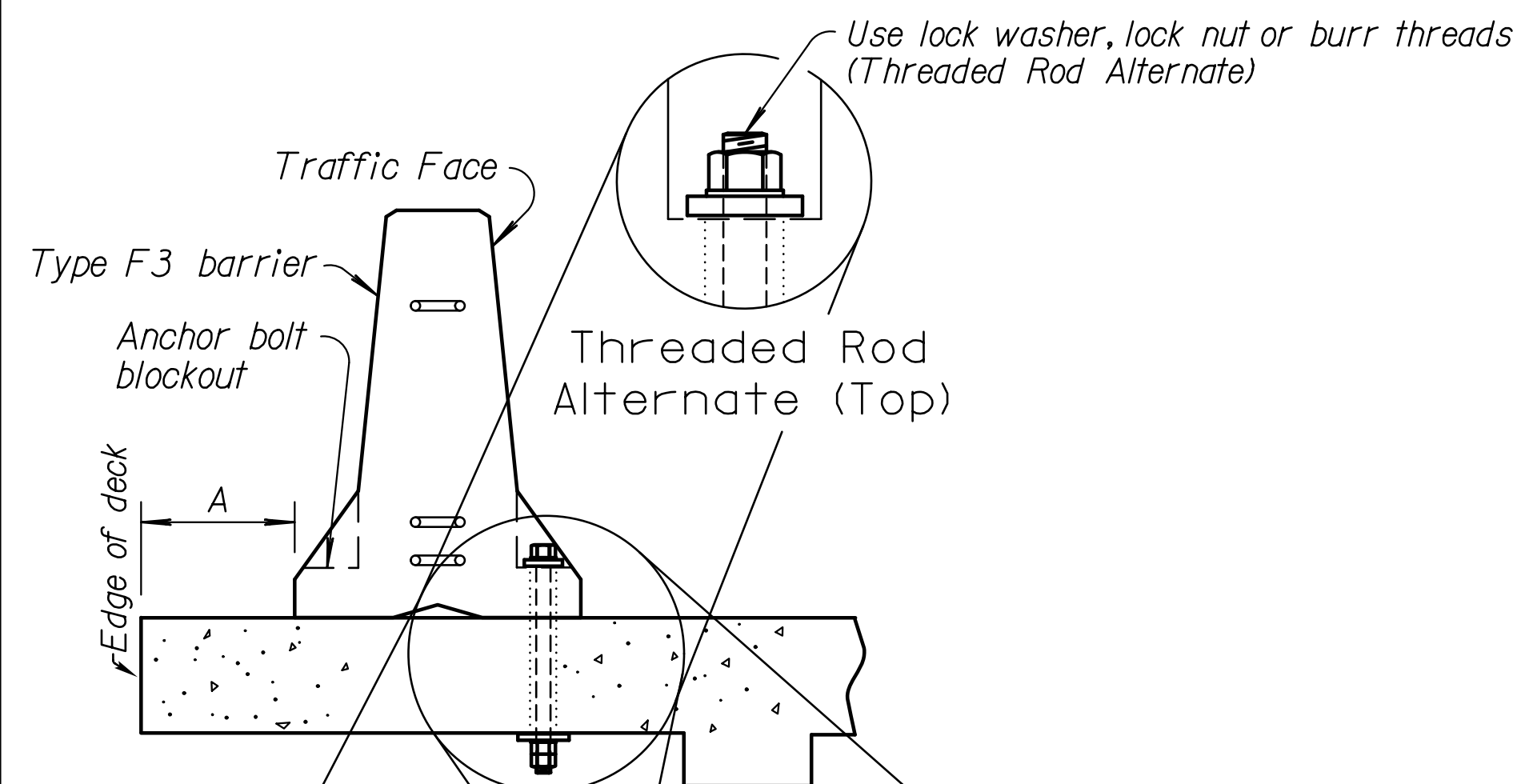


Option	BRIDGE DECK APPLICATION	
1 B	$0' \leq A < 2'$	Anchor each barrier with 3 bolts on traffic face
2 B	$\Delta 2' \leq A < 4'$	Anchor with Tie-down strap connector
3 B	$A \geq 4'$	No anchorage required unless shown on plans

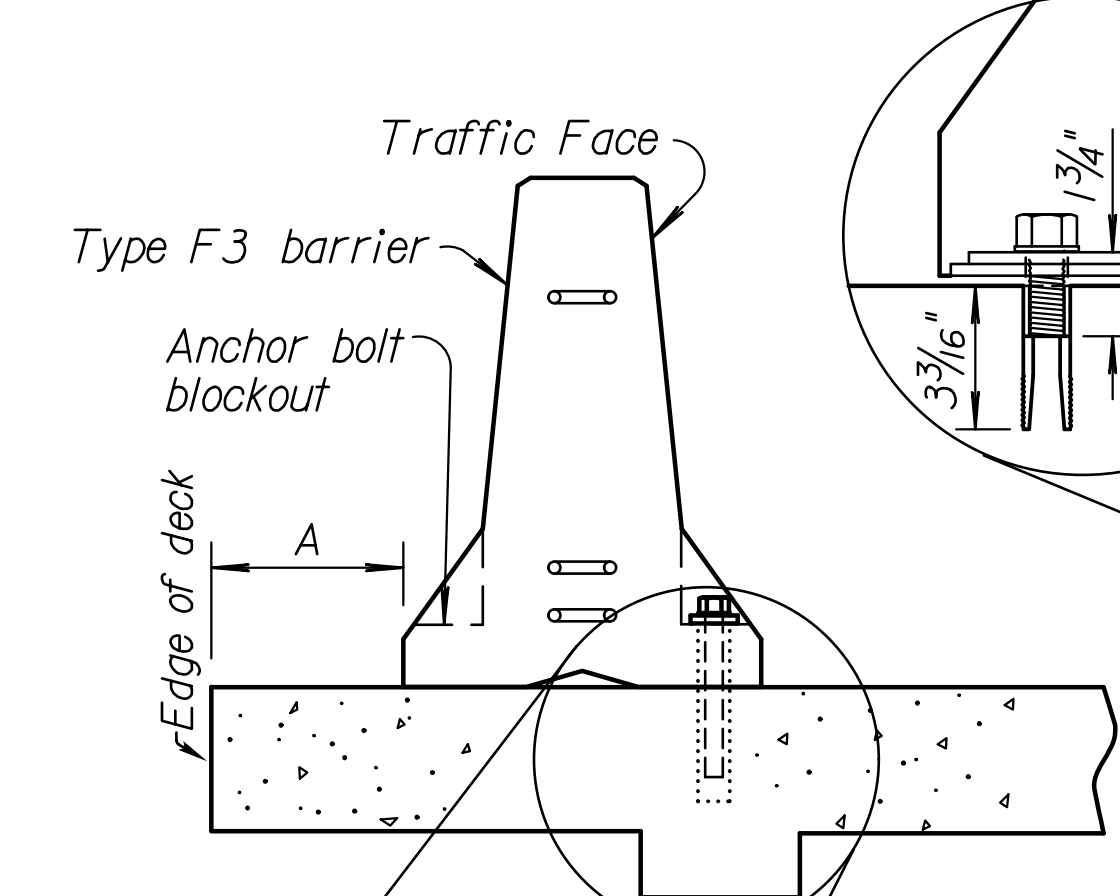
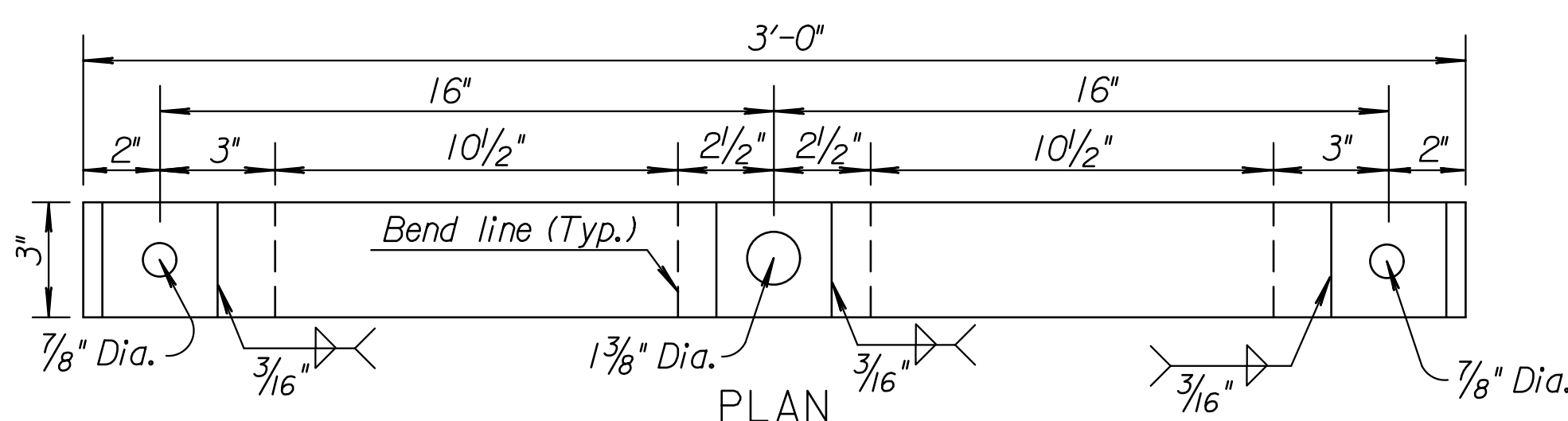
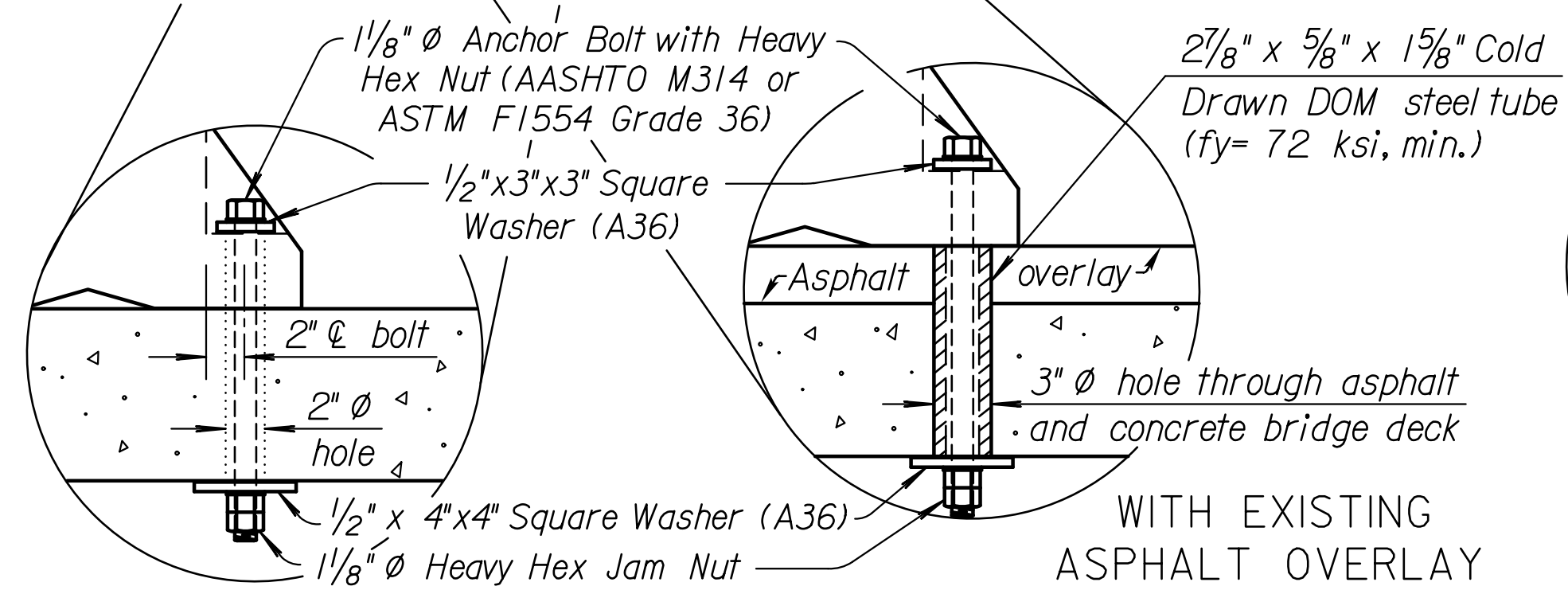
Option	ROAD PAVEMENT APPLICATION	
1 R	$0' \leq A < 2'$	Anchor each barrier with 3-bolts on traffic face
2 R	$6' \leq A < 2'$	Anchor with Tie-down Strap or Staked Down (flexible)
3 R	$A \geq 2'$	No anchorage required

STATE	PROJECT NO.	YEAR	SHEET NO.	TOTAL SHEETS
KANSAS	87 N-0616-01	2017	92	166

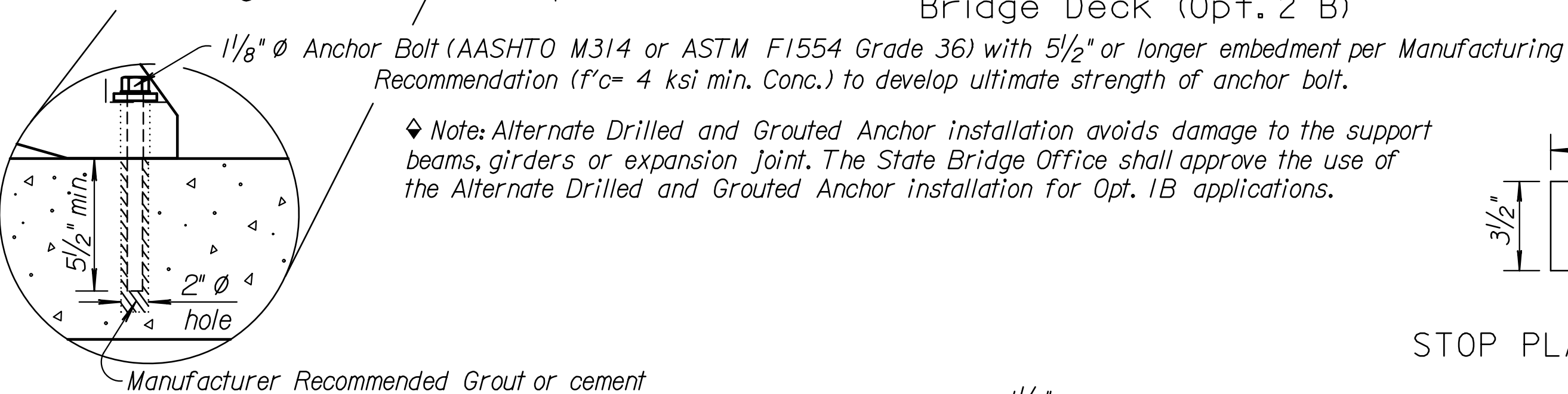
Δ This dimension may be reduced to 1' on a newly constructed Bridge Deck.
 Note: BRIDGE APPLICATION (Opt. 1 B) may be used in lieu of (Opt. 2 B) with prior approval from the State Bridge Office.



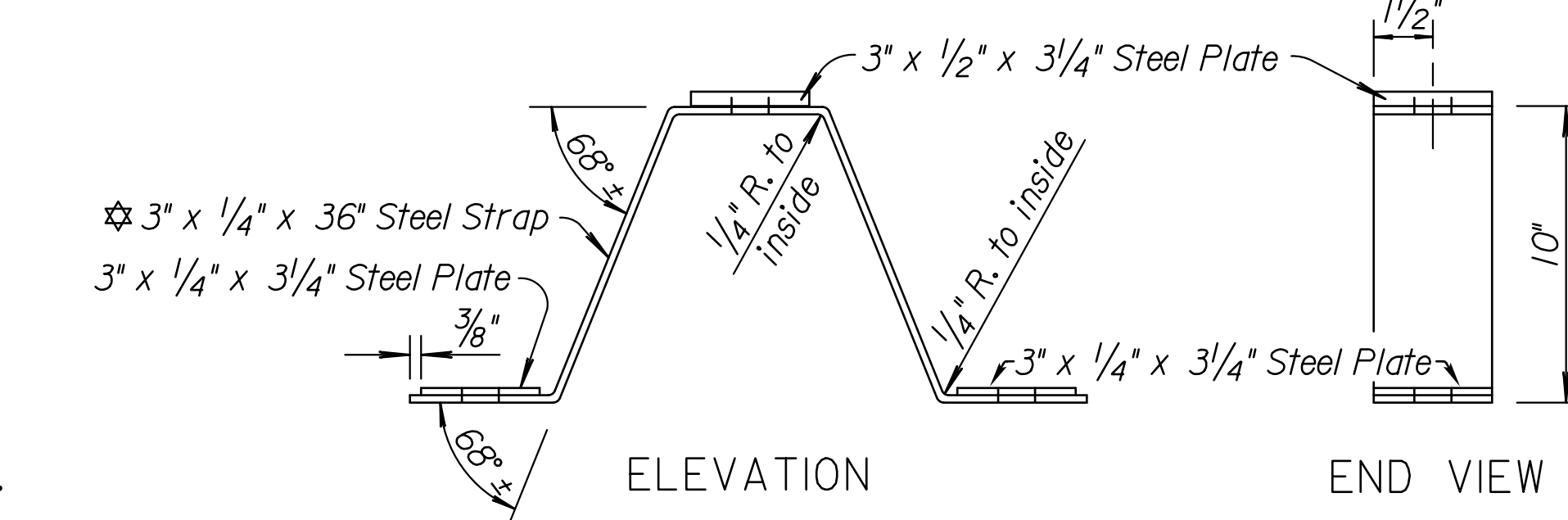
THROUGH BOLT (Preferred)
 Install on Bridge Deck (Opt. 1B)



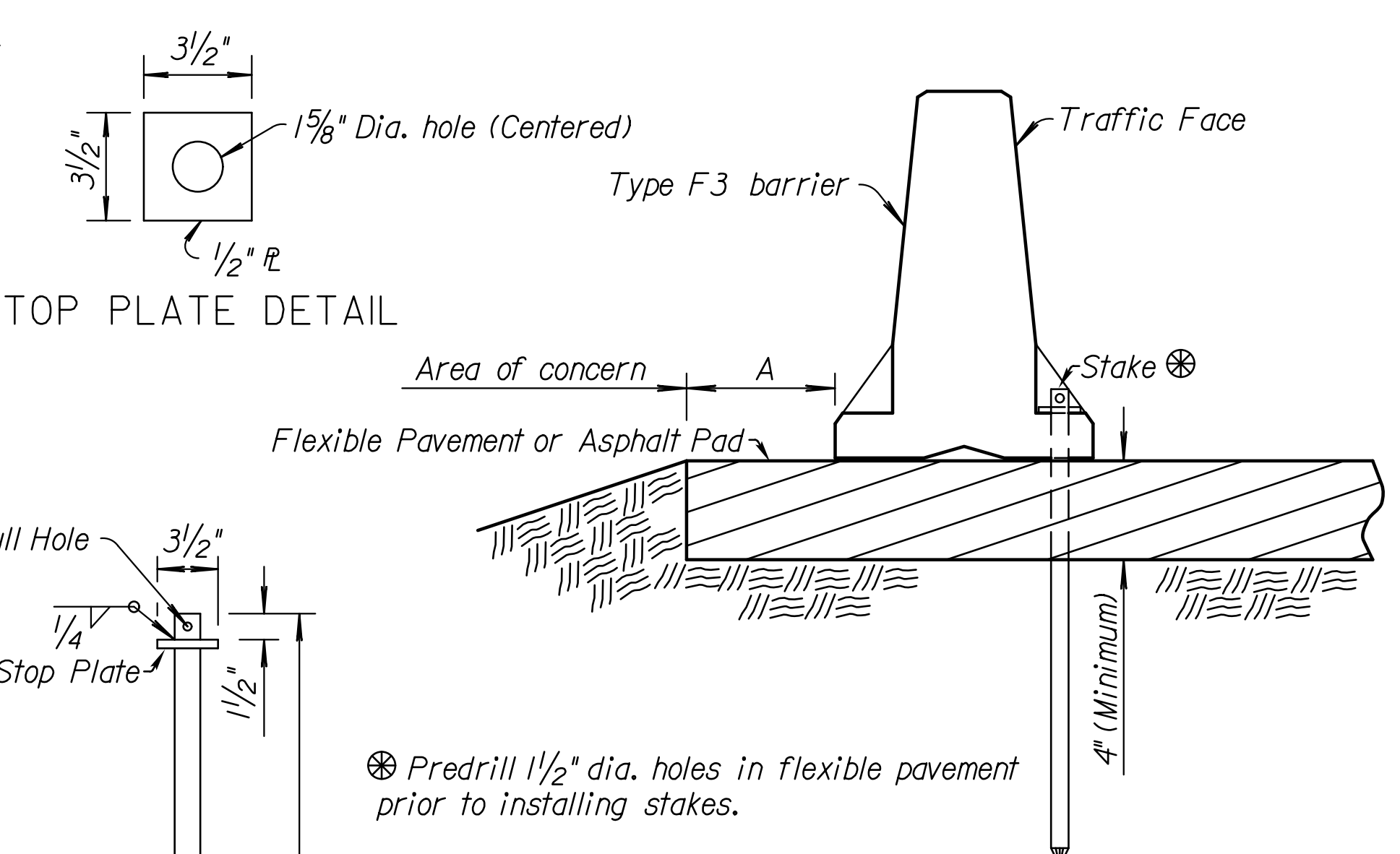
ALTERNATE DRILLED AND GROUTED ANCHOR
 Bridge Deck (Opt. 1B)
 or Rigid Pavement (Opt. 1R)



TIE-DOWN STRAP
 Rigid Pavement (Opt. 2 R) or
 Bridge Deck (Opt. 2 B)

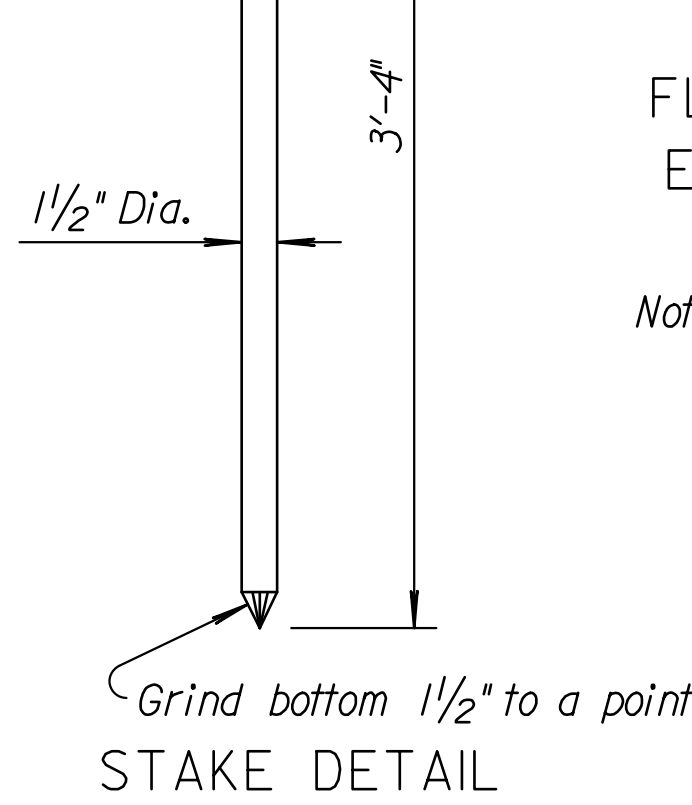


TIE-DOWN STRAP DETAILS
 * Option to use a thicker steel strap is not allowed.

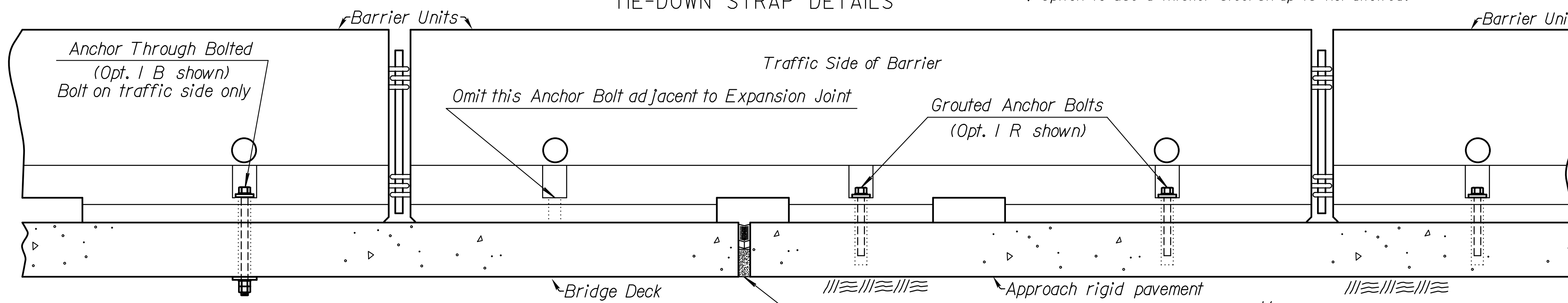


FLEXIBLE PAVEMENT ROAD APPLICATION
 ELEVATION - STAKED DOWN (Opt. 2 R)

Note: See Std. Drawing No. RD622 for details and quantities not shown on this sheet.



Grind bottom 1/2 inch to a point
 STAKE DETAIL



ELEVATION
 TREATMENT AT BRIDGE DECK EXPANSION JOINT SCHEMATIC (Expansion < 1 1/2 inch)

TEMPORARY
 CONCRETE SAFETY BARRIER
 TYPE F3 ANCHORAGE

Drawn By: unfiled
 File: c:\transystems\pw_local\transyscorp-pw\1\taurimelid0258264\rd622b.dgn
 Plotted: 10/9/2017