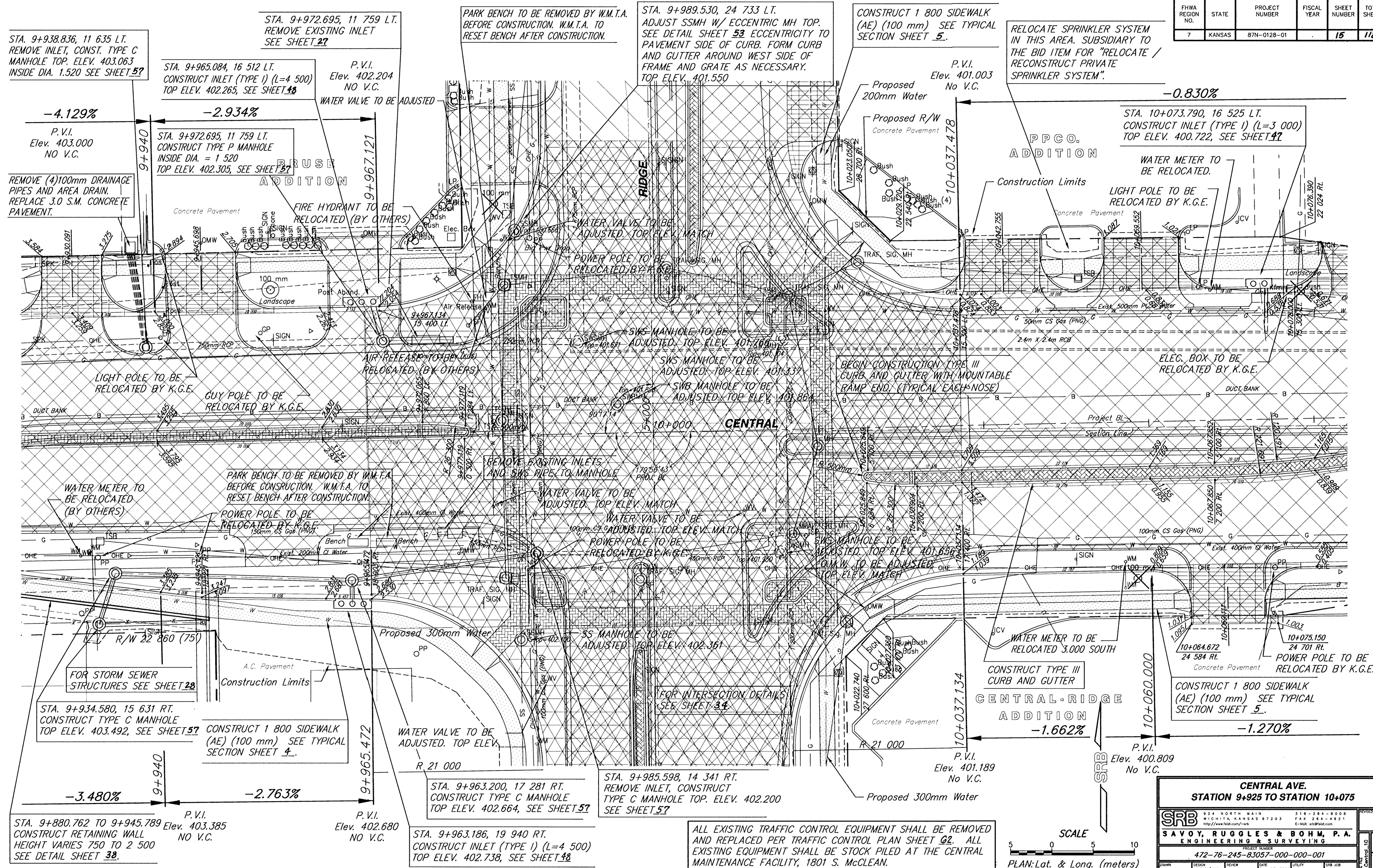


FHWA REGION NO.	STATE	PROJECT NUMBER	FISCAL YEAR	SHEET NUMBER	TOTAL SHEETS
7	KANSAS	87N-0128-01		15	118

DATE	BY



STA. 9+938.836, 11 635 LT.
REMOVE INLET, CONST. TYPE C
MANHOLE TOP. ELEV. 403.063
INSIDE DIA. 1.520 SEE SHEET 57

STA. 9+972.695, 11 759 LT.
REMOVE EXISTING INLET
SEE SHEET 27

PARK BENCH TO BE REMOVED BY W.M.T.A.
BEFORE CONSTRUCTION. W.M.T.A. TO
RESET BENCH AFTER CONSTRUCTION.

STA. 9+989.530, 24 733 LT.
ADJUST SSMH W/ ECCENTRIC MH TOP.
SEE DETAIL SHEET 53 ECCENTRICITY TO
PAVEMENT SIDE OF CURB. FORM CURB
AND GUTTER AROUND WEST SIDE OF
FRAME AND GRATE AS NECESSARY.
TOP ELEV. 401.550

CONSTRUCT 1 800 SIDEWALK
(AE) (100 mm) SEE TYPICAL
SECTION SHEET 5.

RELOCATE SPRINKLER SYSTEM
IN THIS AREA. SUBSIDIARY TO
THE BID ITEM FOR "RELOCATE /
RECONSTRUCT PRIVATE
SPRINKLER SYSTEM".

STA. 9+965.084, 16 512 LT.
CONSTRUCT INLET (TYPE I) (L=4 500)
TOP ELEV. 402.265, SEE SHEET 48

P.V.I.
Elev. 402.204
NO V.C.

STA. 10+073.790, 16 525 LT.
CONSTRUCT INLET (TYPE I) (L=3 000)
TOP ELEV. 400.722, SEE SHEET 47

WATER METER TO
BE RELOCATED.

LIGHT POLE TO BE
RELOCATED BY K.G.E.

ELEC. BOX TO BE
RELOCATED BY K.G.E.

PARK BENCH TO BE REMOVED BY W.M.T.A.
BEFORE CONSTRUCTION. W.M.T.A. TO
RESET BENCH AFTER CONSTRUCTION.

WATER VALVE TO BE
ADJUSTED. TOP ELEV. MATCH

WATER VALVE TO BE
ADJUSTED. TOP ELEV. MATCH

WATER METER TO BE
RELOCATED 3.000 SOUTH

CONSTRUCT 1 800 SIDEWALK
(AE) (100 mm) SEE TYPICAL
SECTION SHEET 5.

STA. 9+934.580, 15 631 RT.
CONSTRUCT TYPE C MANHOLE
TOP ELEV. 403.492, SEE SHEET 57

CONSTRUCT 1 800 SIDEWALK
(AE) (100 mm) SEE TYPICAL
SECTION SHEET 4.

STA. 9+963.200, 17 281 RT.
CONSTRUCT TYPE C MANHOLE
TOP ELEV. 402.664, SEE SHEET 57

STA. 9+985.598, 14 341 RT.
REMOVE INLET, CONSTRUCT
TYPE C MANHOLE TOP. ELEV. 402.200
SEE SHEET 57

STA. 9+880.762 TO 9+945.789
CONSTRUCT RETAINING WALL
HEIGHT VARIES 750 TO 2 500
SEE DETAIL SHEET 38.

STA. 9+963.186, 19 940 RT.
CONSTRUCT INLET (TYPE I) (L=4 500)
TOP ELEV. 402.738, SEE SHEET 48

ALL EXISTING TRAFFIC CONTROL EQUIPMENT SHALL BE REMOVED
AND REPLACED PER TRAFFIC CONTROL PLAN SHEET Q2. ALL
EXISTING EQUIPMENT SHALL BE STOCK PILED AT THE CENTRAL
MAINTENANCE FACILITY, 1801 S. McCLEAN.

**CENTRAL AVE.
STATION 9+925 TO STATION 10+075**

SRB
SAVOY, RUGGLES & BOHM, P.A.
ENGINEERING & SURVEYING

PROJECT NUMBER
472-76-245-83057-000-000-001

DATE
Dec. 13, 2000

UTILITY
SRB JOB
1218T

15
118

