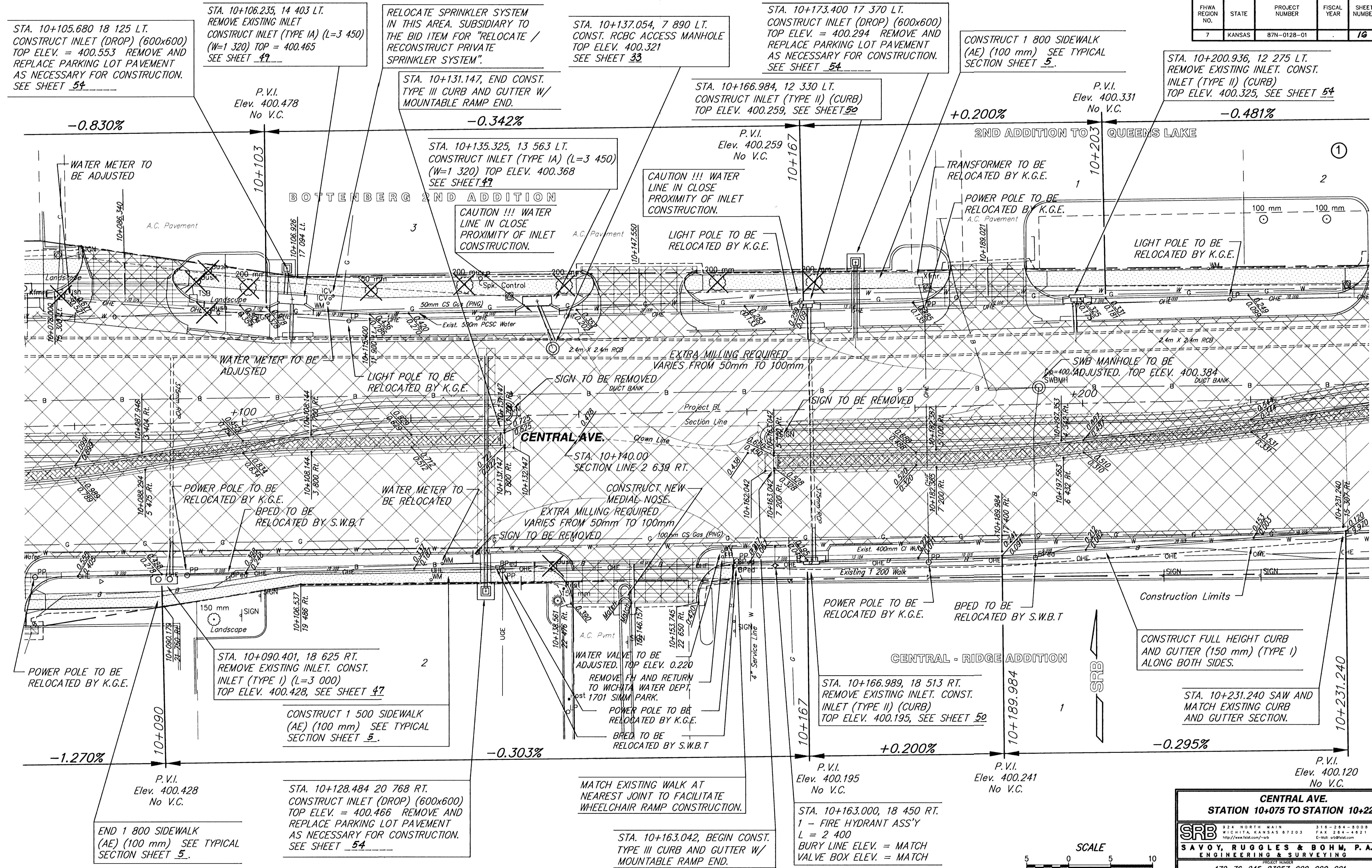


FHWA REGION NO.	STATE	PROJECT NUMBER	FISCAL YEAR	SHEET NUMBER	TOTAL SHEETS
7	KANSAS	87N-0128-01		16	118

DATE	BY



STA. 10+105.680 18 125 LT.
CONSTRUCT INLET (DROP) (600x600)
TOP ELEV. = 400.553 REMOVE AND
REPLACE PARKING LOT PAVEMENT
AS NECESSARY FOR CONSTRUCTION.
SEE SHEET 54

STA. 10+106.235, 14 403 LT.
REMOVE EXISTING INLET
CONSTRUCT INLET (TYPE IA) (L=3 450)
(W=1 320) TOP = 400.465
SEE SHEET 47

RELOCATE SPRINKLER SYSTEM
IN THIS AREA. SUBSIDIARY TO
THE BID ITEM FOR "RELOCATE /
RECONSTRUCT PRIVATE
SPRINKLER SYSTEM".

STA. 10+137.054, 7 890 LT.
CONST. RCB ACCESS MANHOLE
TOP ELEV. 400.321
SEE SHEET 33

STA. 10+173.400 17 370 LT.
CONSTRUCT INLET (DROP) (600x600)
TOP ELEV. = 400.294 REMOVE AND
REPLACE PARKING LOT PAVEMENT
AS NECESSARY FOR CONSTRUCTION.
SEE SHEET 54

CONSTRUCT 1 800 SIDEWALK
(AE) (100 mm) SEE TYPICAL
SECTION SHEET 5.

STA. 10+200.936, 12 275 LT.
REMOVE EXISTING INLET. CONST.
INLET (TYPE II) (CURB)
TOP ELEV. 400.325, SEE SHEET 54

WATER METER TO
BE ADJUSTED

STA. 10+131.147, END CONST.
TYPE III CURB AND GUTTER W/
MOUNTABLE RAMP END.

STA. 10+166.984, 12 330 LT.
CONSTRUCT INLET (TYPE II) (CURB)
TOP ELEV. 400.259, SEE SHEET 52

P.V.I.
Elev. 400.331
No V.C.

P.V.I.
Elev. 400.478
No V.C.

STA. 10+135.325, 13 563 LT.
CONSTRUCT INLET (TYPE IA) (L=3 450)
(W=1 320) TOP ELEV. 400.368
SEE SHEET 47

CAUTION !!! WATER
LINE IN CLOSE
PROXIMITY OF INLET
CONSTRUCTION.

TRANSFORMER TO BE
RELOCATED BY K.G.E.

POWER POLE TO BE
RELOCATED BY K.G.E.

LIGHT POLE TO BE
RELOCATED BY K.G.E.

WATER METER TO BE
ADJUSTED

LIGHT POLE TO BE
RELOCATED BY K.G.E.

SIGN TO BE REMOVED
DUCT BANK

SIGN TO BE REMOVED

SWB MANHOLE TO BE
ADJUSTED. TOP ELEV. 400.384

POWER POLE TO BE
RELOCATED BY K.G.E.

BPED TO BE
RELOCATED BY S.W.B.T

WATER METER TO
BE RELOCATED

CONSTRUCT NEW
MEDIAL NOSE.

SIGN TO BE REMOVED

POWER POLE TO BE
RELOCATED BY K.G.E.

BPED TO BE
RELOCATED BY S.W.B.T

Construction Limits

CONSTRUCT FULL HEIGHT CURB
AND GUTTER (150 mm) (TYPE I)
ALONG BOTH SIDES.

STA. 10+090.401, 18 625 RT.
REMOVE EXISTING INLET. CONST.
INLET (TYPE I) (L=3 000)
TOP ELEV. 400.428, SEE SHEET 47

CONSTRUCT 1 500 SIDEWALK
(AE) (100 mm) SEE TYPICAL
SECTION SHEET 5.

WATER VALVE TO BE
ADJUSTED. TOP ELEV. 0.220
REMOVE FH AND RETURN
TO WICHITA WATER DEPT.
Post 1701 SIMM PARK.

POWER POLE TO BE
RELOCATED BY K.G.E.

BPED TO BE
RELOCATED BY S.W.B.T

STA. 10+166.989, 18 513 RT.
REMOVE EXISTING INLET. CONST.
INLET (TYPE II) (CURB)
TOP ELEV. 400.195, SEE SHEET 52

STA. 10+231.240 SAW AND
MATCH EXISTING CURB
AND GUTTER SECTION.

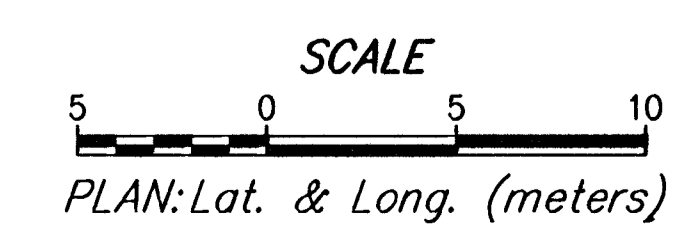
END 1 800 SIDEWALK
(AE) (100 mm) SEE TYPICAL
SECTION SHEET 5.

STA. 10+128.484 20 768 RT.
CONSTRUCT INLET (DROP) (600x600)
TOP ELEV. = 400.466 REMOVE AND
REPLACE PARKING LOT PAVEMENT
AS NECESSARY FOR CONSTRUCTION.
SEE SHEET 54

MATCH EXISTING WALK AT
NEAREST JOINT TO FACILITATE
WHEELCHAIR RAMP CONSTRUCTION.

STA. 10+163.042, BEGIN CONST.
TYPE III CURB AND GUTTER W/
MOUNTABLE RAMP END.

STA. 10+163.000, 18 450 RT.
1 - FIRE HYDRANT ASS'Y
L = 2 400
BURY LINE ELEV. = MATCH
VALVE BOX ELEV. = MATCH



**CENTRAL AVE.
STATION 10+075 TO STATION 10+225**

SRB 324 NORTH MAIN WICHITA, KANSAS 67203
316-284-3008 FAX 284-4621
http://www.srb.com E-Mail: srb@srbit.com

**SAVOY, RUGGLES & BOHM, P.A.
ENGINEERING & SURVEYING**

PROJECT NUMBER
472-76-245-83057-000-000-001

DATE: Dec. 13, 2000

UTILITY: SRB JOB 1218T

16
118