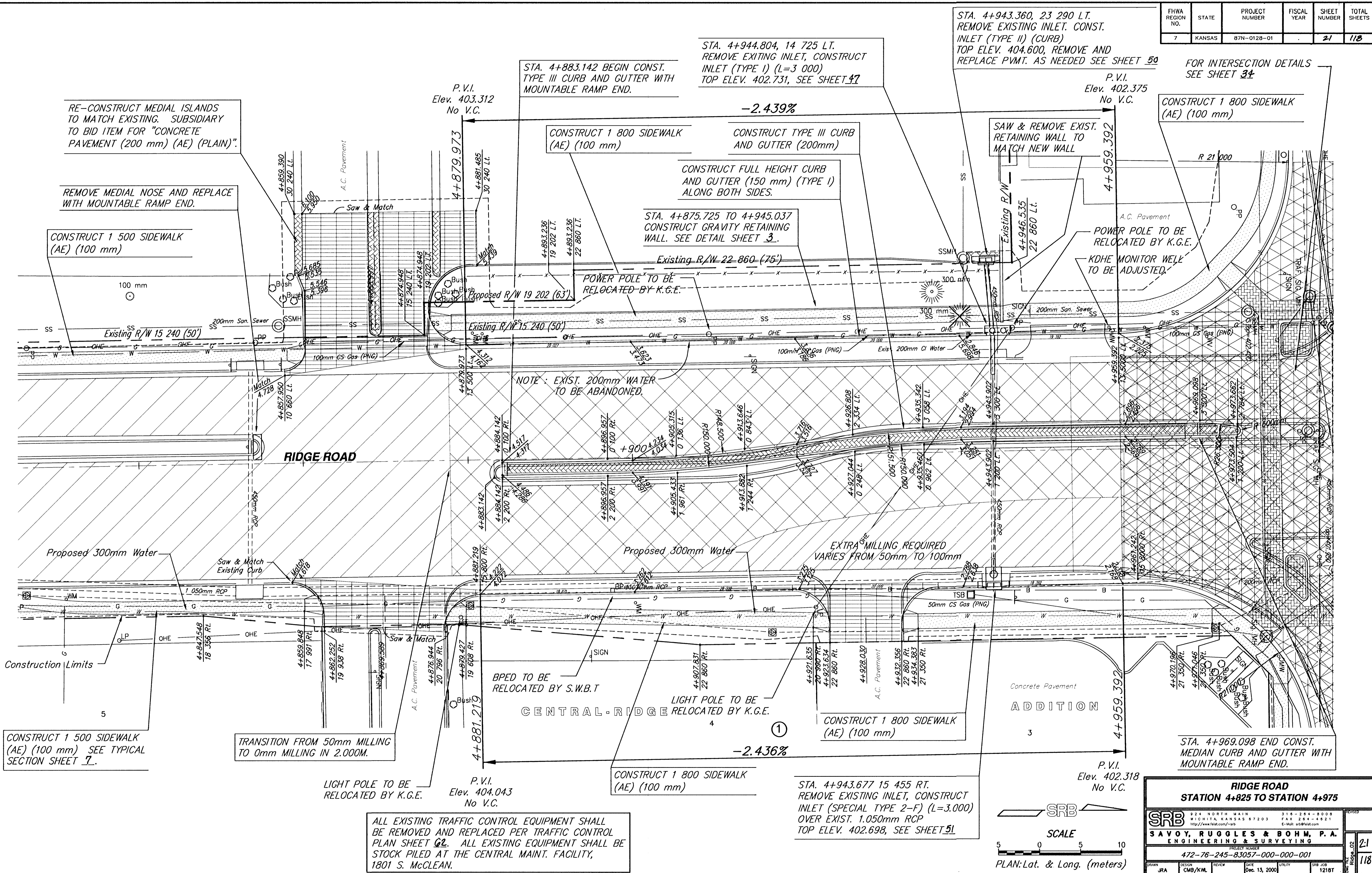


FHWA REGION NO.	STATE	PROJECT NUMBER	FISCAL YEAR	SHEET NUMBER	TOTAL SHEETS
7	KANSAS	87N-0128-01		21	118

DATE	
BY	
REFERENCES NOTED	
REFERENCES CHECKED	



FOR INTERSECTION DETAILS SEE SHEET 34

CONSTRUCT 1 800 SIDEWALK (AE) (100 mm)

SAW & REMOVE EXIST. RETAINING WALL TO MATCH NEW WALL

POWER POLE TO BE RELOCATED BY K.G.E.
KDHE MONITOR WELL TO BE ADJUSTED.

STA. 4+883.142 BEGIN CONST. TYPE III CURB AND GUTTER WITH MOUNTABLE RAMP END.
STA. 4+944.804, 14 725 LT. REMOVE EXISTING INLET, CONSTRUCT INLET (TYPE I) (L=3 000) TOP ELEV. 402.731, SEE SHEET 47

CONSTRUCT FULL HEIGHT CURB AND GUTTER (150 mm) (TYPE I) ALONG BOTH SIDES.

STA. 4+875.725 TO 4+945.037 CONSTRUCT GRAVITY RETAINING WALL. SEE DETAIL SHEET 3.

POWER POLE TO BE RELOCATED BY K.G.E.

NOTE: EXIST. 200mm WATER TO BE ABANDONED.

EXTRA MILLING REQUIRED VARIES FROM 50mm TO 100mm

BPED TO BE RELOCATED BY S.W.B.T

LIGHT POLE TO BE RELOCATED BY K.G.E.

CONSTRUCT 1 800 SIDEWALK (AE) (100 mm)

STA. 4+969.098 END CONST. MEDIAN CURB AND GUTTER WITH MOUNTABLE RAMP END.

RE-CONSTRUCT MEDIAL ISLANDS TO MATCH EXISTING. SUBSIDIARY TO BID ITEM FOR "CONCRETE PAVEMENT (200 mm) (AE) (PLAIN)".

REMOVE MEDIAL NOSE AND REPLACE WITH MOUNTABLE RAMP END.

CONSTRUCT 1 500 SIDEWALK (AE) (100 mm)

CONSTRUCT 1 500 SIDEWALK (AE) (100 mm) SEE TYPICAL SECTION SHEET 7.

TRANSITION FROM 50mm MILLING TO 0mm MILLING IN 2.000M.

LIGHT POLE TO BE RELOCATED BY K.G.E.

ALL EXISTING TRAFFIC CONTROL EQUIPMENT SHALL BE REMOVED AND REPLACED PER TRAFFIC CONTROL PLAN SHEET 02. ALL EXISTING EQUIPMENT SHALL BE STOCK PILED AT THE CENTRAL MAINT. FACILITY, 1801 S. McCLEAN.

RIDGE ROAD
STATION 4+825 TO STATION 4+975

SRB
SAVOY, RUGGLES & BOHM, P.A.
ENGINEERING & SURVEYING

PROJECT NUMBER
472-76-245-83057-000-000-001

DESIGN	DATE	REVIEW	DATE	UTILITY	SRB JOB
JRA	Dec. 13, 2000	CMB/KWL			12187

21
118

