

FHWA REGION NO.	STATE	PROJECT NUMBER	FISCAL YEAR	SHEET NUMBER	TOTAL SHEETS
7	KANSAS	87N-0128-01		25	118

BY	DATE

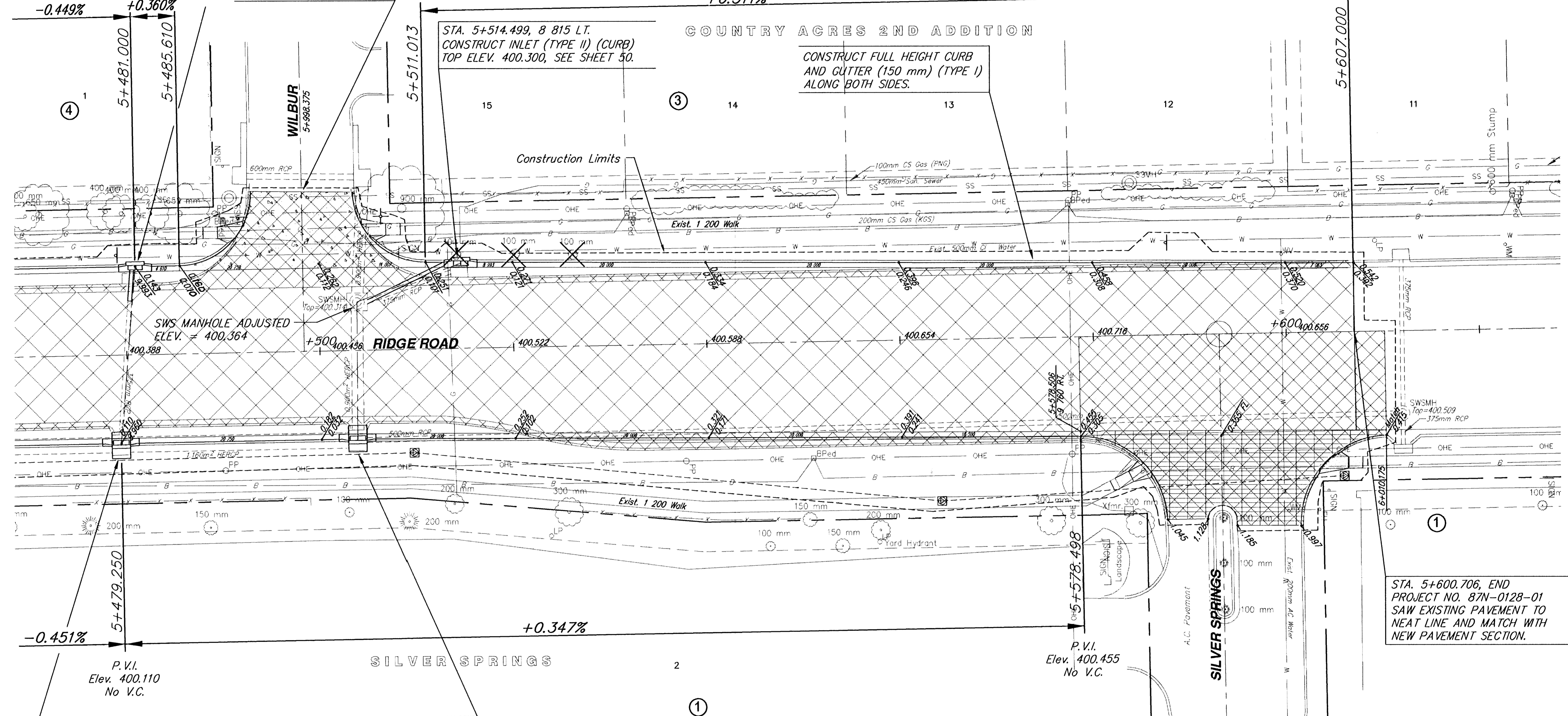
STA. 5+480.687, 9 030 LT.
CONSTRUCT INLET (TYPE II) (CURB)
TOP ELEV. 400.208, SEE SHEET 50.

FOR INTERSECTION
DETAILS, SEE SHEET 36

STA. 5+998.375, 15 505 LT.
SAW EXISTING PAVEMENT TO
NEAT LINE AND MATCH.

P.V.I.
Elev. 400.251
No V.C.

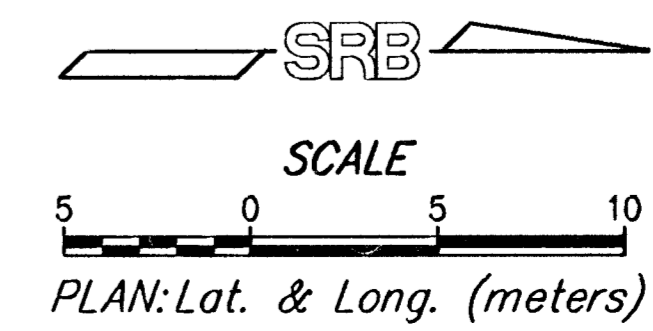
P.V.I.
Elev. 400.542
No V.C.



STA. 5+479.255, 9 965 RT.
REMOVE EXIST. INLET TOP. CONST.
INLET TOP (TYPE 2-R) (MODIFY)
TOP ELEV. 400.110
SEE SHEET 52

STA. 5+503.731, 9 965 RT.
REMOVE EXIST. INLET TOP. CONST.
INLET TOP (TYPE 2-R) (MODIFY)
TOP ELEV. 400.195
SEE SHEET 52

STA. 5+600.706, END
PROJECT NO. 87N-0128-01
SAW EXISTING PAVEMENT TO
NEAT LINE AND MATCH WITH
NEW PAVEMENT SECTION.



RIDGE ROAD STATION 5+475 TO STATION 5+625			
SRB	924 NORTH MAIN WICHITA, KANSAS 67203 http://www.srb.com/~srb	318-264-8008 FAX 318-264-8921 E-Mail: us@srb.com	REVISED
SAVOY, RUGGLES & BOHM, P.A. ENGINEERING & SURVEYING			
PROJECT NUMBER 472-76-245-83057-000-000-001			
DATE Dec. 13, 2000	DATE Dec. 13, 2000	DATE Dec. 13, 2000	DATE Dec. 13, 2000
DRWN JRA	DISGN CMB/KWL	REVIEW	DATE Dec. 13, 2000
SRB JOB 1218T			25
SRB JOB 1218T			118