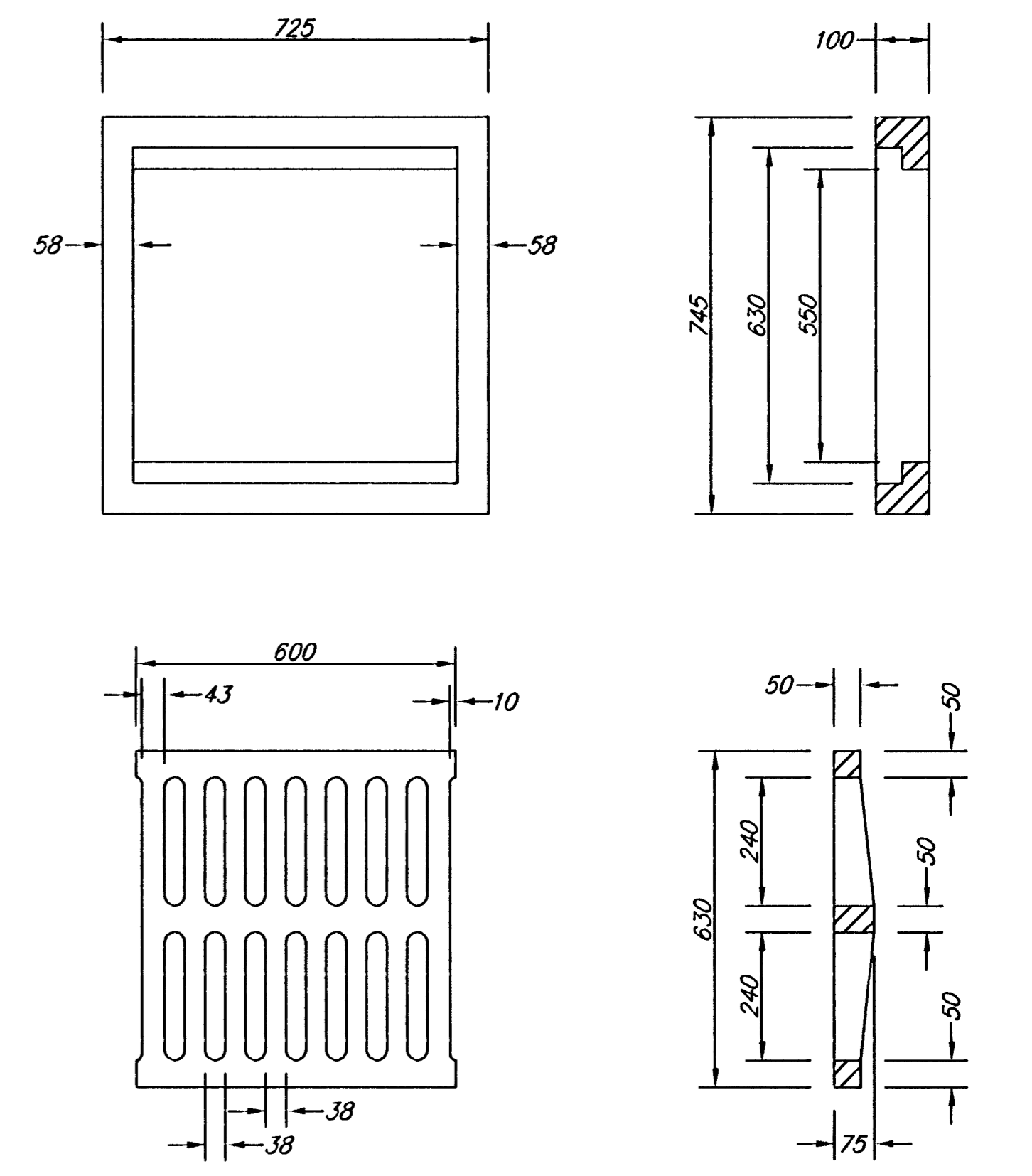
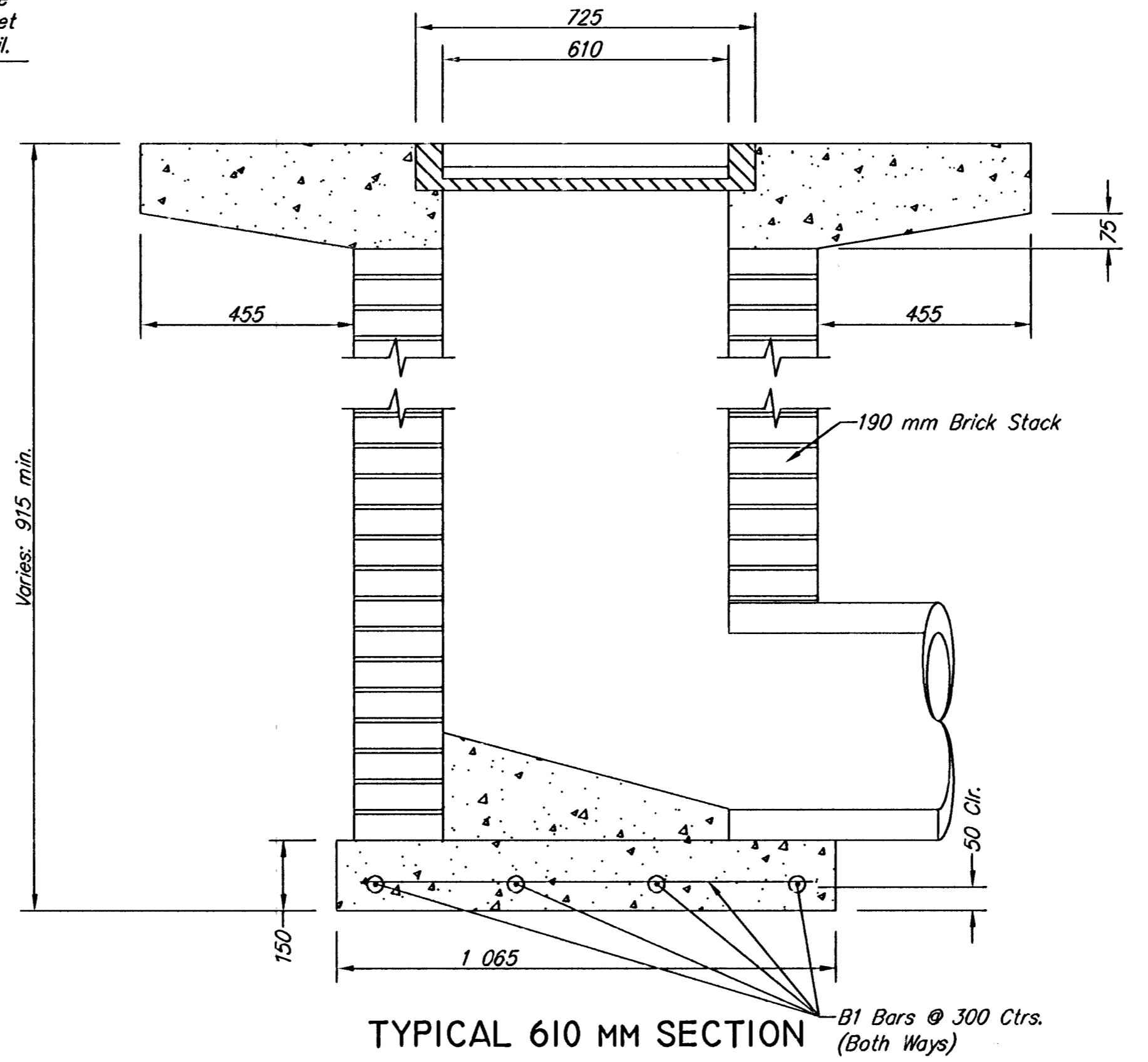
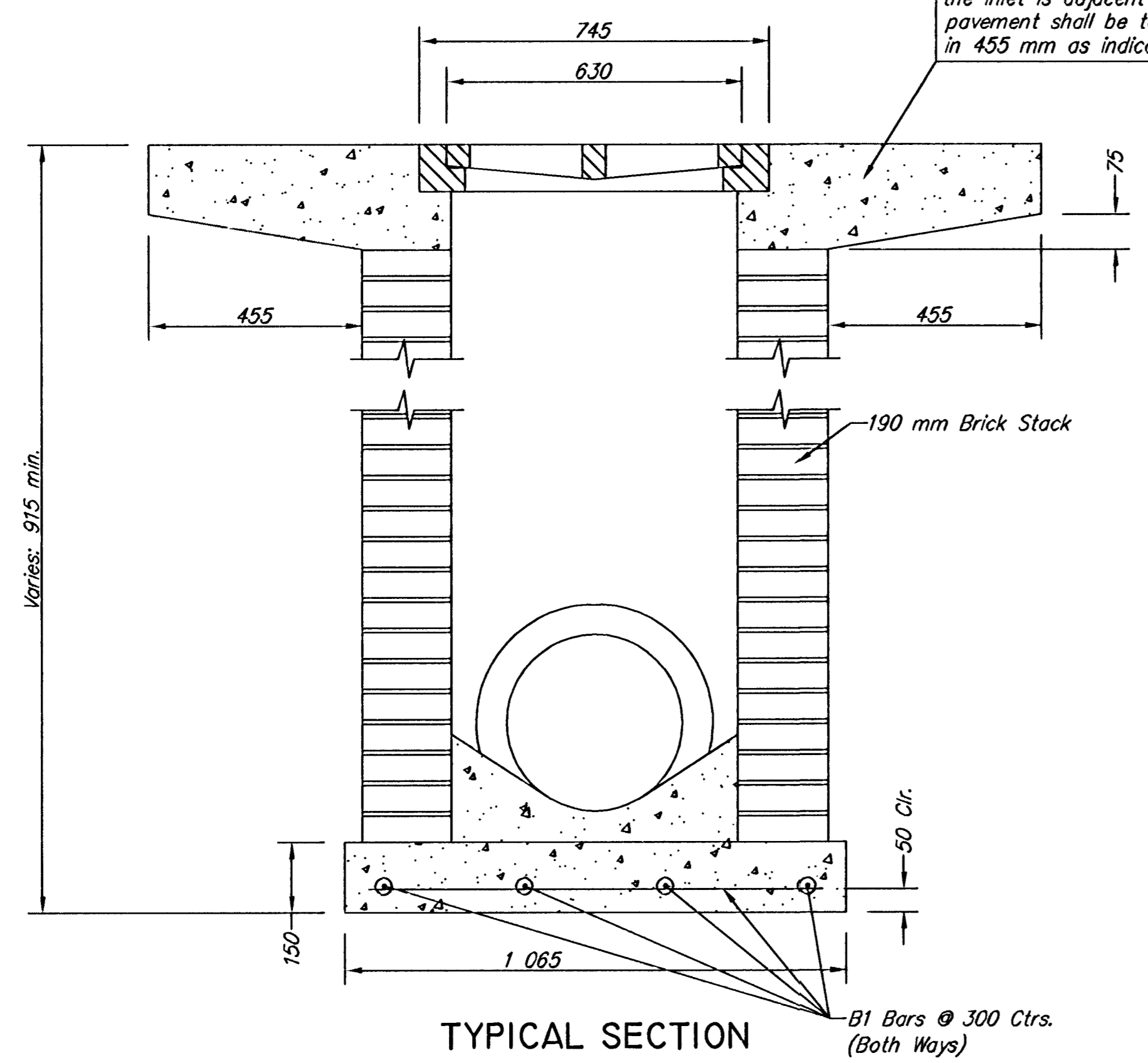


NOTE: Concrete apron shall be constructed around the inlet when inlet is located in an unpaved area. Where the inlet is adjacent to pavement, the pavement shall be tapered to the inlet in 455 mm as indicated on the detail.



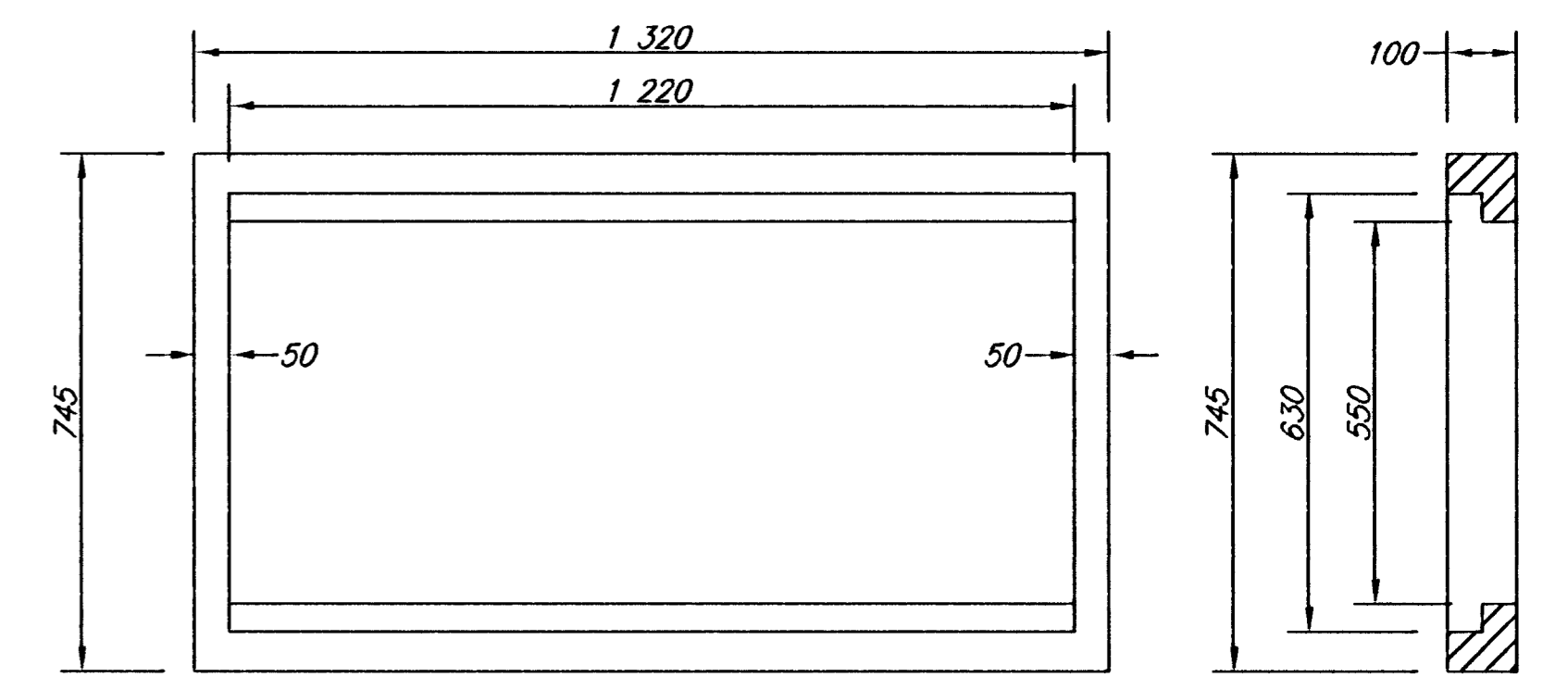
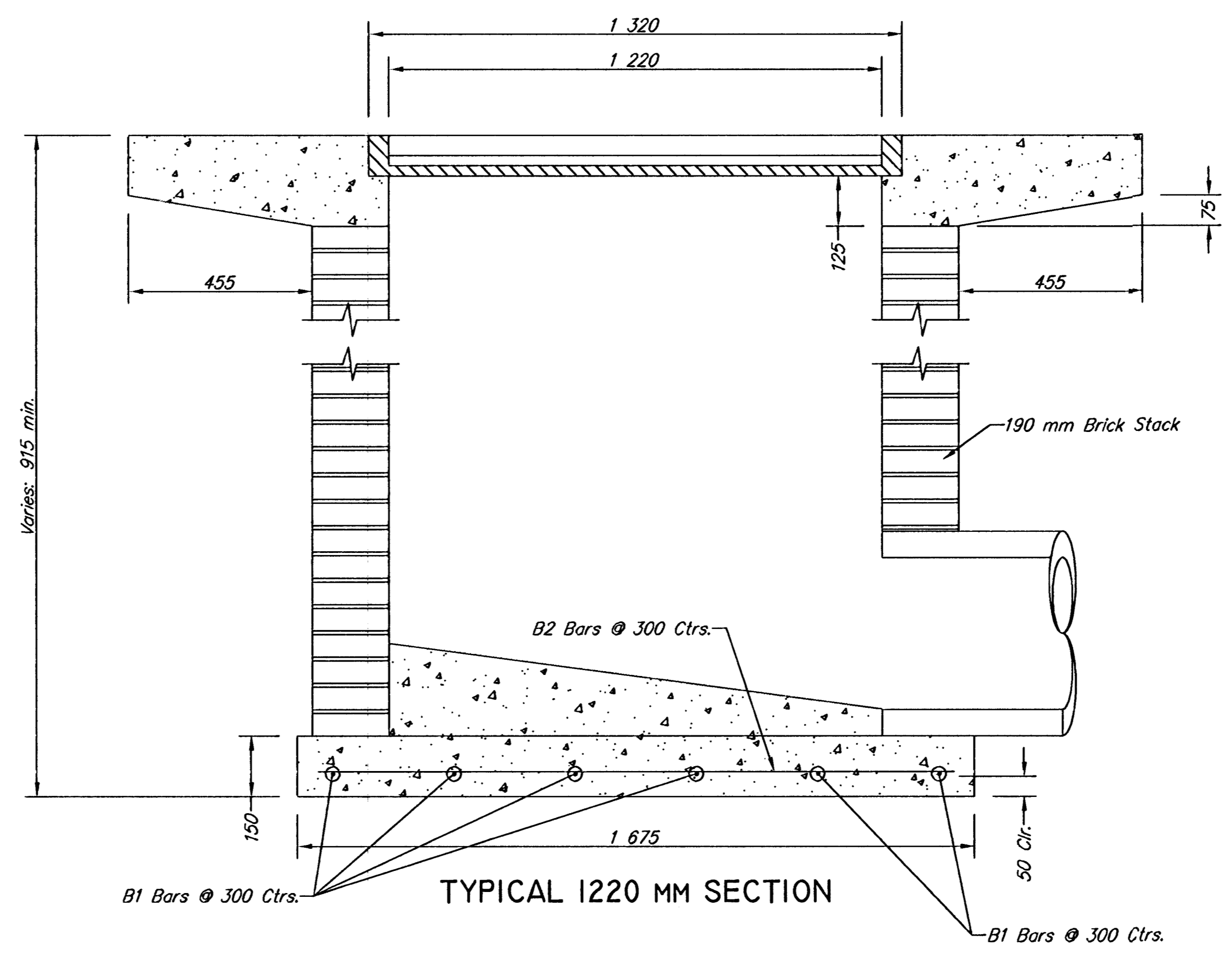
NOTE: Detail based on Deeter #2433 Frame and Grate. Margin of error ±5 mm.

Width	Length	Concrete	Cast Steel	Reinforcing Steel
610 mm	610 mm	0.7714 m ³	234 kg	7.674 kg
610 mm	1220 mm	1.0169 m ³	399 kg	12.019 kg

Width	Length	Bricks	Excavation
610 mm	610 mm	493 bricks/x*	2.772 m ³ /m + 1.826 m ³
610 mm	1220 mm	677 bricks/x*	3.788 m ³ /m + 2.093 m ³

*x=Inlet Depth-(150 mm+Pavement Thickness+75 mm)

TYPICAL INLET QUANTITIES



NOTE: Detail based on Deeter #2434 Frame. Margin of error ±5 mm.

THE CITY OF WICHITA

CITY ENGINEER'S OFFICE
CITY HALL - SEVENTH FLOOR
105 NORTH MAIN STREET
WICHITA, KANSAS 67202
(316) 268-4114 FAX

DROP INLET
610 mm x 610 mm \ 610 mm x 1220 mm

M. E. LINDEBAK P.E. - CITY ENGINEER

PROJECT NUMBER 472-83057 OCA #

DATE MAR 98 SHEET 54 OF 118