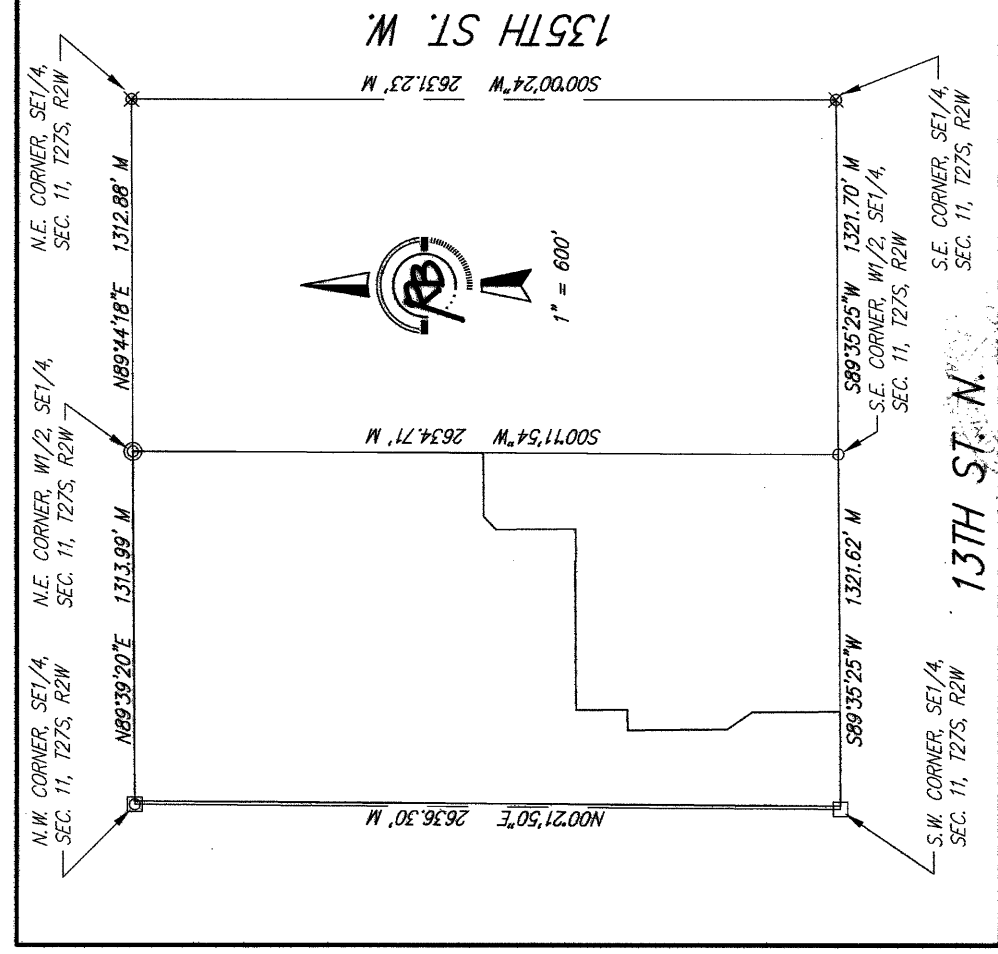
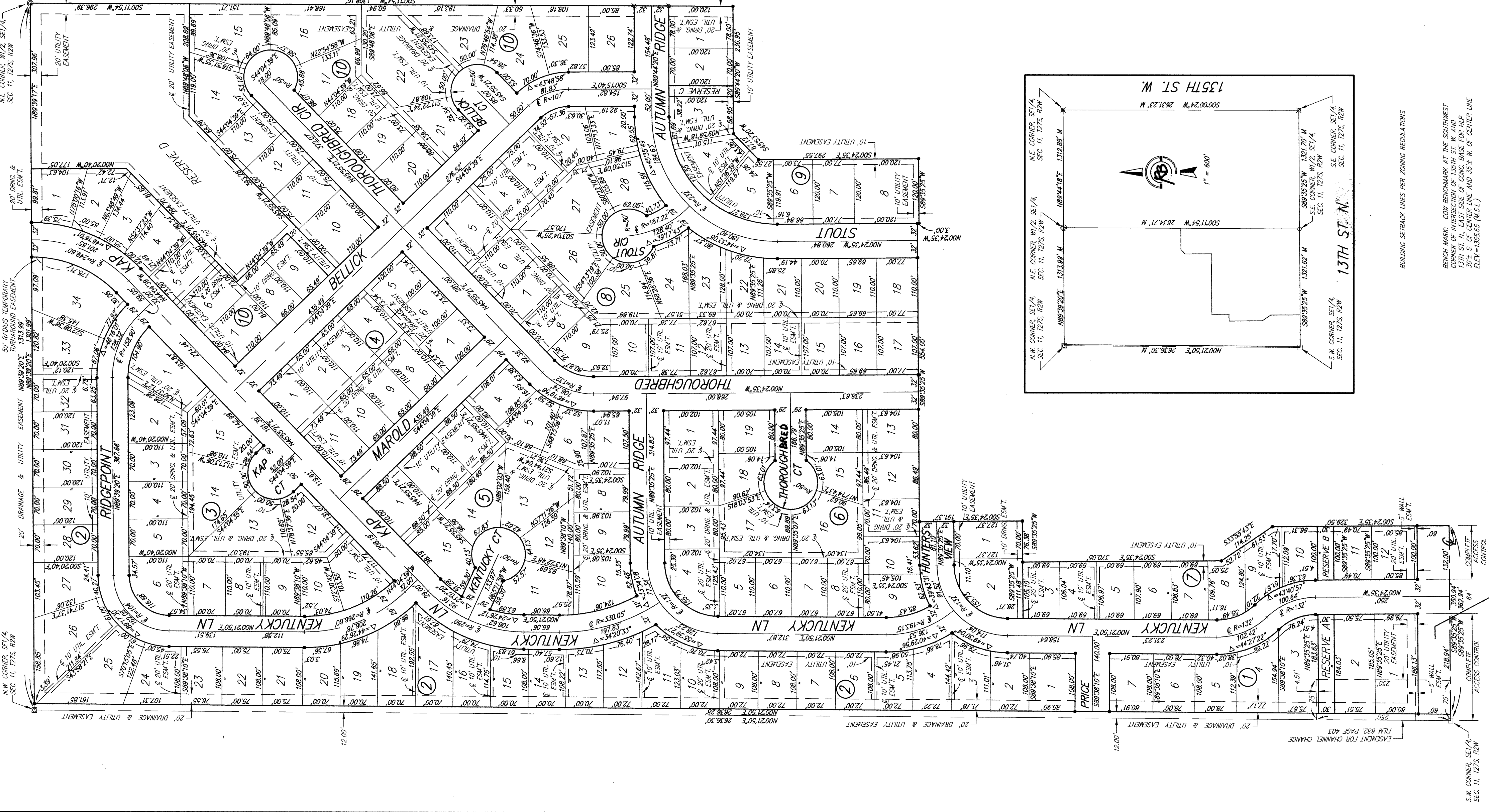


CHERYL'S HOLLOW SECOND ADDITION

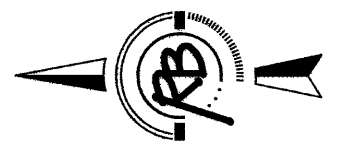
Wichita, Sedgwick County, Kansas

PC 188-4



- SUBJECT MARKET LEGEND**
- = STONE (FOUND)
 - = MAIL IN CENTER OF STONE (FOUND)
 - = 1/2" IRON PIPE (FOUND)
 - = 1" IRON PIPE (FOUND)
 - ⊗ = 1/2" REBAR W/BAUGHMAN CAP (FOUND)
 - ⊗ = 3/4" IRON PIPE W/CEOROCK COUNTY ALUMINUM CAP (FOUND)
 - = 5/8" REBAR W/IRAB CAP (SET)
- (A) = ASSUMED
M = MEASURED

MINIMUM BUILDING AND ELEVATION FOR LOWEST OPENING INTO STRUCTURES	LOT NO.	ELEVATION (M.S.L.)
	7	1,2, 3, 4, 5, 6, 7, 8, 9, 10, 11, 12
	9	1, 2, 3, 4, 5, 6, 7, 8
	10	1, 2, 3, 4, 5, 6, 7, 8, 9, 10, 11, 12, 13, 14, 15



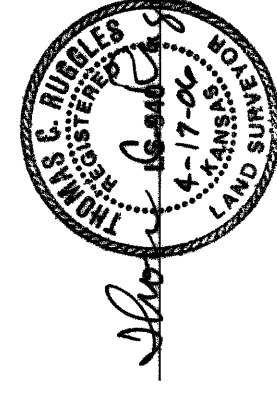
State of Kansas) SS
Sedgwick County)

Me, Ruggles & Bohm, P.A., Land Surveyors in atresaid county and state, do hereby certify that, under the supervision of the undersigned, we have surveyed and platted "CHERYL'S HOLLOW SECOND ADDITION", Wichita, Sedgwick County, Kansas, and that the accompanying plat is a true and correct exhibit of the property surveyed, described as follows:

The west half of the SE 1/4, Sec. 11, T27S, R2W of the 6th P.M., Sedgwick County, Kansas, EXCEPT that the west 12.00 feet, AND EXCEPT that part platted as Cheryl's Hollow, Wichita, Sedgwick County, Kansas.

All public easements and dedications are hereby vacated by virtue of K.S.A. 12-512(b).

Ruggles & Bohm, P.A.
Thomas C. Ruggles
Land Surveyor



Know all men by these presents that we, the undersigned, have caused the land described in the surveyor's certificate to be platted into Lots, Blocks, Reserves and Streets, to be known as "CHERYL'S HOLLOW SECOND ADDITION", Wichita, Sedgwick County, Kansas. Utility easements are hereby granted for the construction and maintenance of all public utilities. Drainage easements are hereby granted to the public as indicated for drainage purposes. Reserves A, B and C are hereby reserved for irrigation, landscaping, drainage, drainage structures and utilities confined to easements. Reserve "D" is here reserved for irrigation, gazebos, playground structures, picnic areas, tables with canopies, walks, lighting, landscaping, berms, lawns, drainage, drainage structures, and utilities confined to easements. The reserves shall be owned and maintained by the Home Owners Association for the addition. The streets are hereby dedicated to and for the use of the public. Access easements as indicated are hereby granted to the appropriate governing body. The temporary turnaround easement is hereby granted for the use of the public, and will expire upon extension of the street beyond the limits of this plat. A drainage plan has been developed for this plat; all drainage easements, rights-of-way, or reserves shall remain at established grades, or as modified with the approval of the City Engineer, and unobstructed to allow for the conveyance of storm water.

Rick Thompson Construction, Inc.
Rick Thompson
President

State of Kansas) SS
Sedgwick County)

The foregoing instrument acknowledged before me, this 18th day of April, 2006, by Rick Thompson, President of Rick Thompson Construction, Inc., on behalf of the corporation.

Richard C. Cunniff
Notary Public
Mildred E. Franz
My appointment expires 02-13-2007

This plat of "CHERYL'S HOLLOW", Wichita, Sedgwick County, Kansas, has been submitted to and approved by the Wichita-Sedgwick County Metropolitan Area Planning Commission, Wichita, Kansas. Dated this 31st day of January, 2006.

Wichita-Sedgwick County Metropolitan Area Planning Commission
Harold K. Warner, Jr.
Chair
John L. Schlegel
Secretary



This plat approved and all dedications shown hereon, accepted by the City Council of the City of Wichita, Kansas, this 17th day of April, 2006.

At the Direction of the City Council
Carlos Williams
Mayor
Karen Sabiet
City Clerk

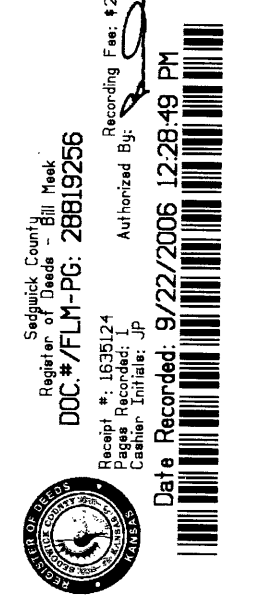
Reviewed in K.S.A. 58-2005 on this 22nd day of April, 2006.
K.S.A. 58-2005 on this 22nd day of April, 2006.
Deputy County Surveyor
L. Robello, LS #1246

Entered on transfer record this 22nd day of September, 2006.
Don Bruce
County Clerk

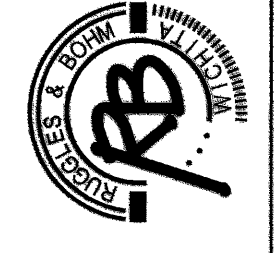
State of Kansas) SS
Sedgwick County)

This is to certify that this plat has been filed for record in the office of the Register of Deeds, this 22nd day of September, 2006, at 12:48:49 o'clock P.M., and is duly recorded.

Bill Meek
Tanya Buckingham
Deputy
Register of Deeds



Ruggles & Bohm, P.A.
Engineering, Surveying, Land Planning
924 North Main
Wichita, Kansas 67203
www.rhuanne.com
(316) 264-8008
(316) 264-4621 fax
E-mail: info@rhuanne.com



This digital plat record accurately reproduces in all details the original plat filed with the Sedgwick County Register of Deeds. Digitized under the supervision of Register of Deeds Bill Meek by Sedgwick County Geographic Information Systems.

Bill Meek, Register of Deeds
Digitized version of original signature

