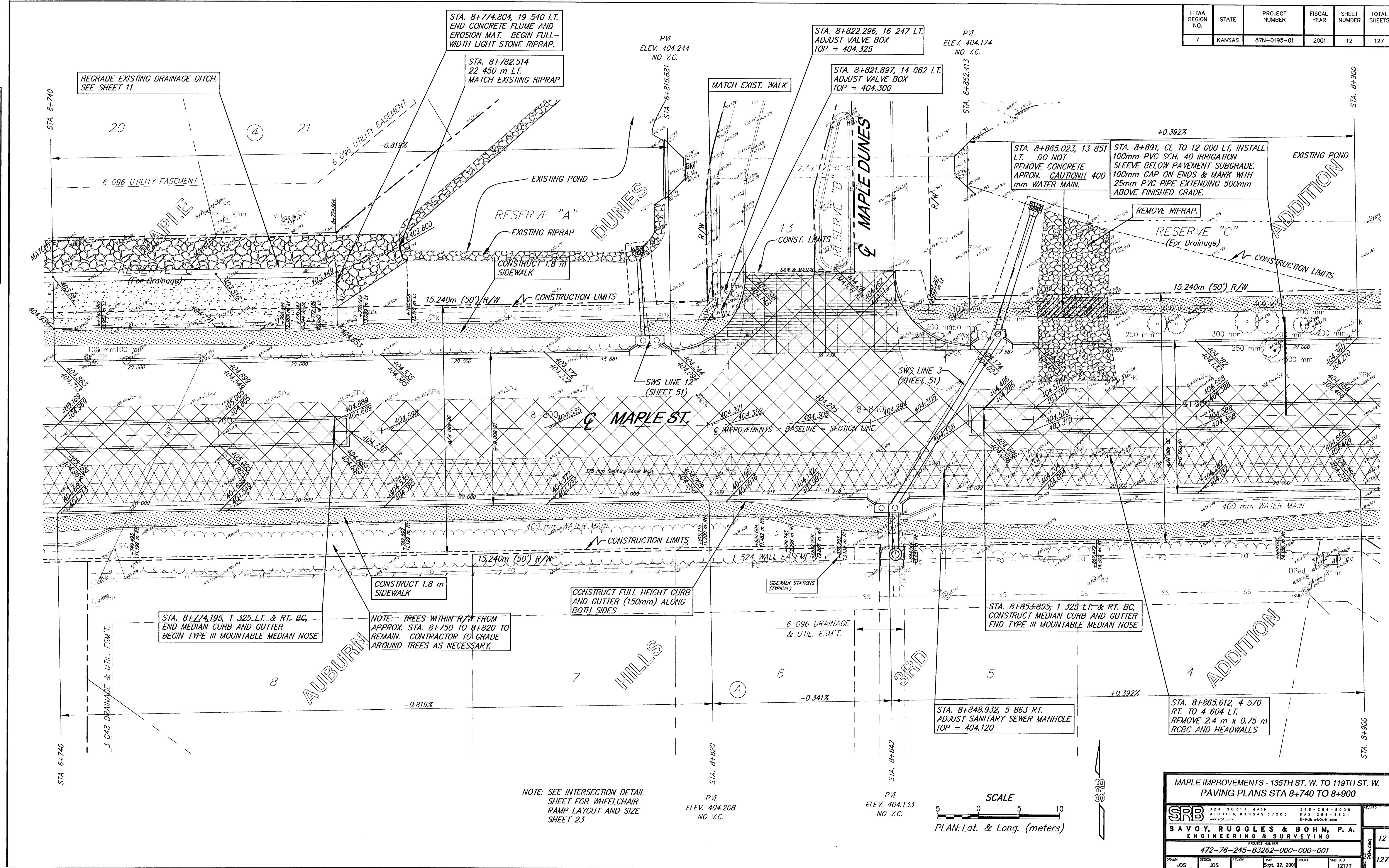


FHWA REGION NO.	STATE	PROJECT NUMBER	FISCAL YEAR	SHEET NUMBER	TOTAL SHEETS
7	KANSAS	87N-0195-01	2001	12	127

BY	DATE
REFERENCES NOTED	
REFERENCES CHECKED	



REGRADE EXISTING DRAINAGE DITCH. SEE SHEET 11

STA. 8+774.804, 19 540 LT. END CONCRETE FLUME AND EROSION MAT. BEGIN FULL-WIDTH LIGHT STONE RIPRAP.

STA. 8+782.514 22 450 m LT. MATCH EXISTING RIPRAP

PVI ELEV. 404.244 NO V.C.

STA. 8+822.296, 16 247 LT. ADJUST VALVE BOX TOP = 404.325

PVI ELEV. 404.174 NO V.C.

STA. 8+821.897, 14 062 LT. ADJUST VALVE BOX TOP = 404.300

STA. 8+865.023, 13 851 LT. DO NOT REMOVE CONCRETE APRON. CAUTION!! 400 mm WATER MAIN.

STA. 8+891, CL TO 12 000 LT. INSTALL 100mm PVC SCH. 40 IRRIGATION SLEEVE BELOW PAVEMENT SUBGRADE. 100mm CAP ON ENDS & MARK WITH 25mm PVC PIPE EXTENDING 500mm ABOVE FINISHED GRADE.

STA. 8+774.195, 1 325 LT. & RT. BC, END MEDIAN CURB AND GUTTER BEGIN TYPE III MOUNTABLE MEDIAN NOSE

NOTE: TREES WITHIN R/W FROM APPROX. STA. 8+750 TO 8+820 TO REMAIN. CONTRACTOR TO GRADE AROUND TREES AS NECESSARY.

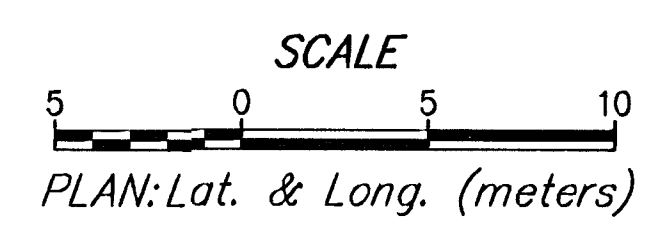
CONSTRUCT FULL HEIGHT CURB AND GUTTER (150mm) ALONG BOTH SIDES

STA. 8+853.895-1 325 LT. & RT. BC, CONSTRUCT MEDIAN CURB AND GUTTER END TYPE III MOUNTABLE MEDIAN NOSE

STA. 8+848.932, 5 863 RT. ADJUST SANITARY SEWER MANHOLE TOP = 404.120

STA. 8+865.612, 4 570 RT. TO 4 604 LT. REMOVE 2.4 m x 0.75 m RCBC AND HEADWALLS

NOTE: SEE INTERSECTION DETAIL SHEET FOR WHEELCHAIR RAMP LAYOUT AND SIZE SHEET 23



MAPLE IMPROVEMENTS - 135TH ST. W. TO 119TH ST. W. PAVING PLANS STA 8+740 TO 8+900

SRB 224 NORTH MAIN WICHITA, KANSAS 67203 www.srb.com 316-264-8008 FAX 264-4821 E-Mail: srb@srb.com

SAVOY, RUGGLES & BOHM, P.A. ENGINEERING & SURVEYING

PROJECT NUMBER 472-76-245-83262-000-000-001

DESIGN	DATE	UTILITY	SRB JOB
JDS	Sept 27, 2001		1217T

12

127