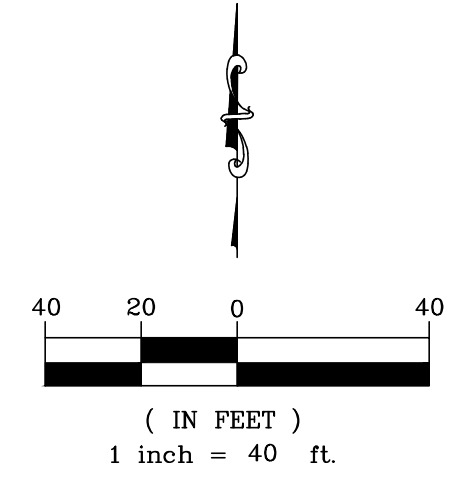
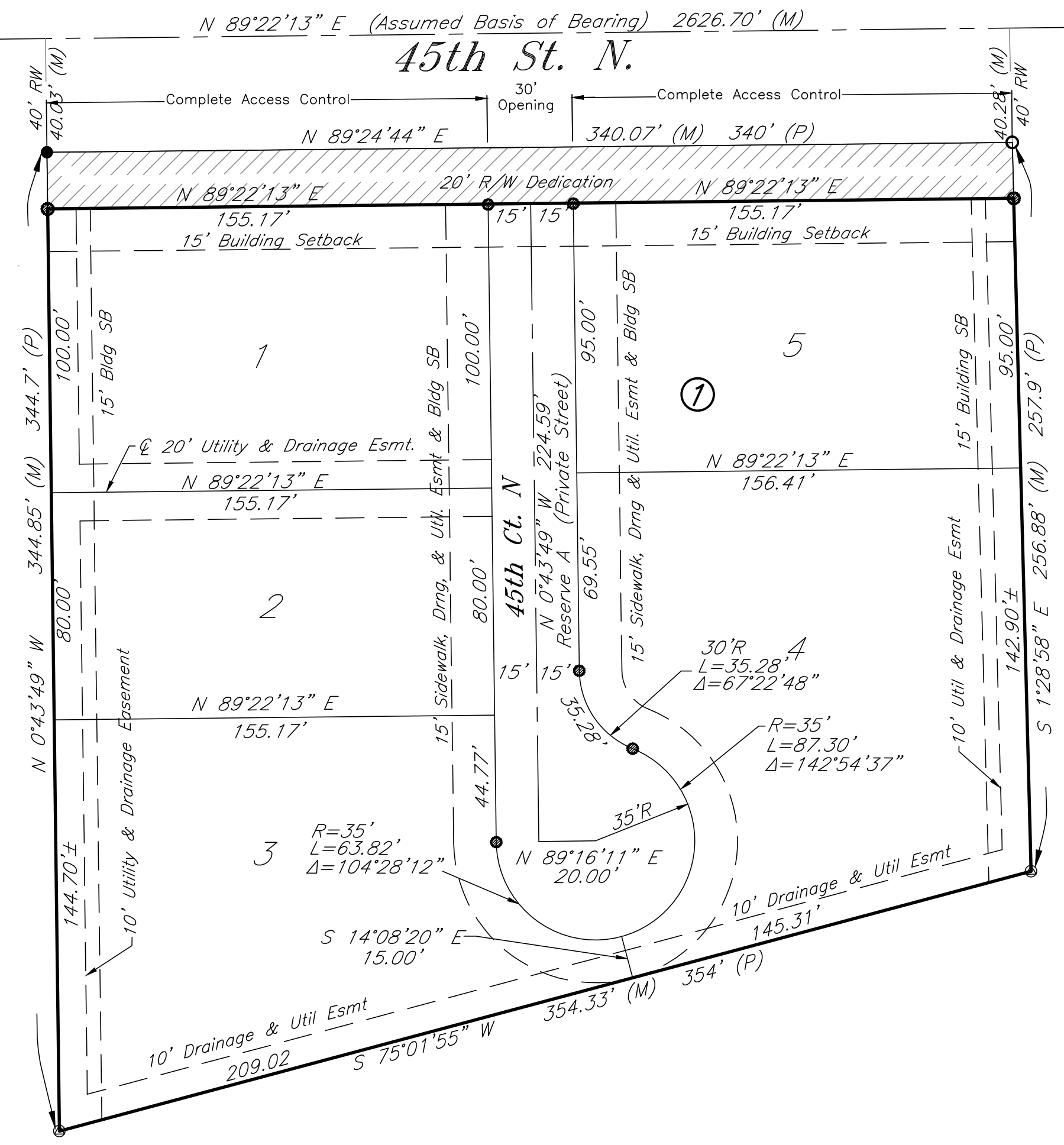


*Sun-Air Estates 2nd Addition
A Replat of Part of Sun-Air Estates
Wichita, Sedgwick County, Kansas*

N 1/4 Corner
Sec. 29, T26S, R2E
300.23'

NE Corner
Sec. 29, T26S, R2E
1986.93'



- Legend**
- M Measured
 - P Platted
 - ⊙ 3/4" Iron Pipe (found)
 - 5/8" Rebar (found) unreadable cap
 - 1/2" Rebar (found) no cap
 - 1/2" Rebar (found) Armstrong
 - ⊗ 1/2" Iron Pipe (found)
 - 5/8" Rebar (set) KEMPA CLS #157

FOR REFERENCE ONLY

State of Kansas)
County of Sedgwick) SS

I, Joanne D. Swanland, a licensed land surveyor of the State of Kansas, do hereby certify that the following described tract of land was surveyed on this 10th day of August, 2016 and the accompanying final plat prepared and that all the monuments shown herein actually exist and their positions are correctly shown to the best of my knowledge and belief:

LEGAL DESCRIPTION
Lots 3 & 4 Sun-Air Estates, Sedgwick County, Kansas

All easements and rights-of-way within said tract are hereby vacated by virtue of KSA 12-512b amended.

Joanne D. Swanland, L.S. #1652

State of Kansas)
County of Sedgwick) SS

Know all men by these presents, that we, the undersigned, have caused the land described in the surveyor's certificate to be platted into Lots, Block, a street and a Reserve, to be known as Sun-Air Estates 2nd Addition, Wichita, Sedgwick County, Kansas. Any street dedications shown are dedicated to and for the use of the public. Reserve A is dedicated for a private roadway. The drainage, sidewalk and utility easements are hereby granted as indicated for drainage purposes and for the construction and maintenance of all public utilities and for sidewalk. No signs, light poles, private drainage systems, masonry trash enclosures or other structures shall be located within public utility easement. The access controls are hereby granted to the appropriate governing body as shown hereon. A drainage plan has been developed for the plat and that all drainage easements, rights-of-way, or reserves shall remain at established grades or as modified with the approval of the applicable City or County Engineer, and unobstructed to allow for the conveyance of stormwater. And further that the land contained herein is held and shall be conveyed subject to any applicable restrictions, reservations and covenants now on file or hereafter filed in the Office of the Register of Deeds of Sedgwick County, Kansas. All abutter's right of access to and from 45th Street is hereby granted to the appropriate governing body as shown on the plat.

By: _____ date _____
Musa Nyang, Manager
Quality Unique Individualized Care, LLC

State of Kansas)
County of Sedgwick) SS

This instrument was acknowledged before me on this _____ day of _____, 2016, Quality Unique Individualized Care, LLC, Musa Nyang, Manager.

Notary Public
My Commission Expires: _____

State of Kansas)
City of Wichita) SS

This plat of Sun-Air Estates 2nd Addition, Wichita, Sedgwick County, Kansas, has been submitted to and approved by the Wichita-Sedgwick County Metropolitan Area Planning Commission, Wichita, Kansas. Dated this _____ day of _____, 2016.
Wichita-Sedgwick County Metropolitan Area Planning Commission.

Carol Chapman Neugent, Chair

Dale Miller, Secretary

State of Kansas)
City of Wichita) SS

This plat approved and all dedications shown hereon accepted by the City Council of the City of Wichita, Kansas, this _____ day of _____, 2016.

At the Direction of the City Council

Jeff Longwell, Mayor

Karen Sublett, City Clerk

Entered on transfer record this _____ day of _____, 2016.

Kelly B. Arnold, County Clerk

State of Kansas)
County of Sedgwick) SS

This is to certify that this plat has been filed for record in the Office of the Register of Deeds this _____ day of _____, 2016, at _____ o'clock _____M; and is duly recorded.

Tonya Buckingham, Register of Deeds

Judy J. Paget, Deputy

Reviewed in accordance with K.S.A. 58-2005 on this _____ day of _____, 2016.

Tricia L. Robello, L.S. #1246
Deputy County Surveyor
Sedgwick County, Kansas

16080 Sun-Air Estates 2nd Addition 11/07/2016

KEMILLER
ENGINEERING PA
117 E. Lewis, Wichita, KS 67202 (316)264-0242