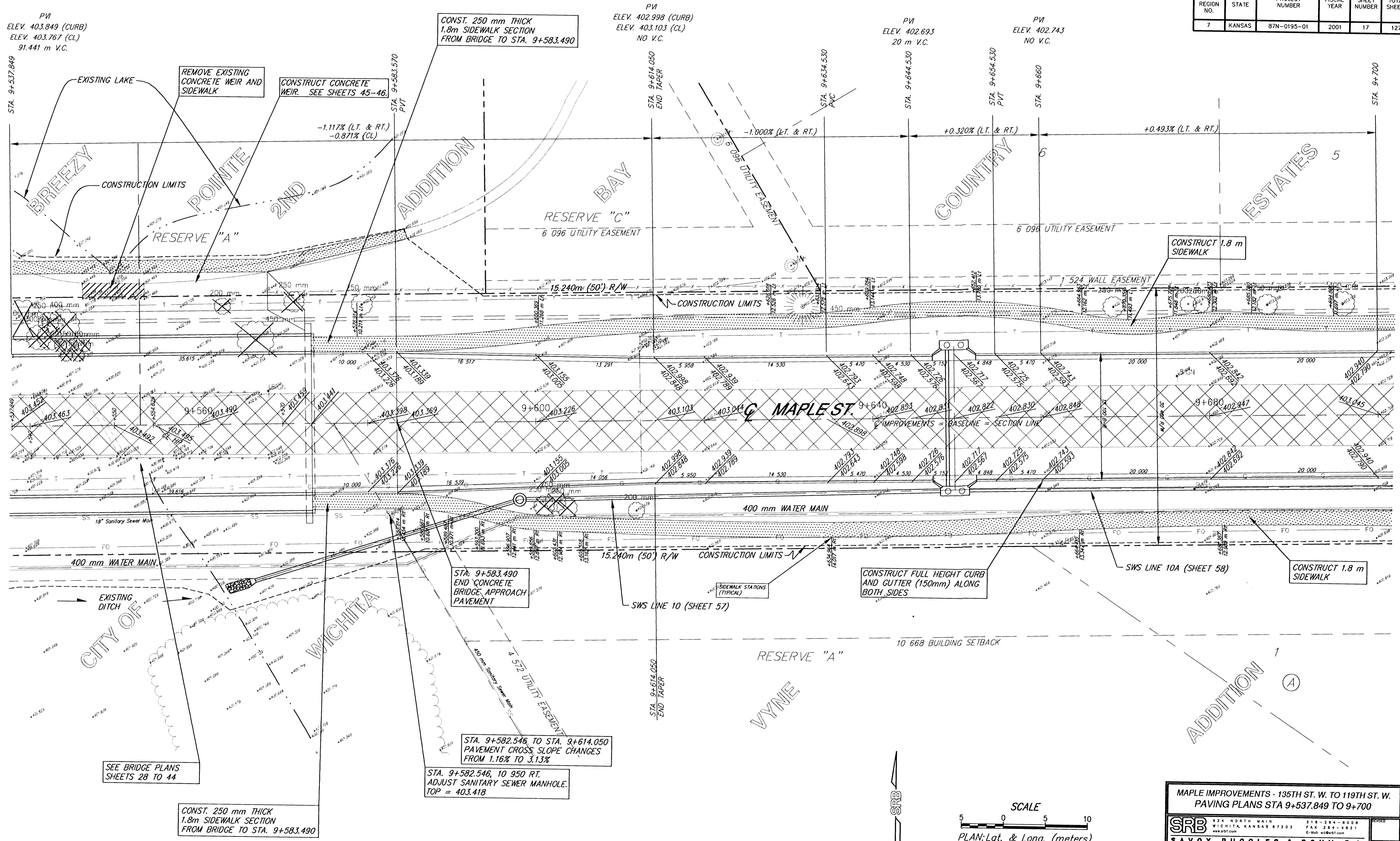


FHWA REGION NO.	STATE	PROJECT NUMBER	FISCAL YEAR	SHEET NUMBER	TOTAL SHEETS
7	KANSAS	87N-0195-01	2001	17	127

DATE	BY



PVI  
 ELEV. 403.849 (CURB)  
 ELEV. 403.767 (CL)  
 91.441 m V.C.

PVI  
 ELEV. 402.998 (CURB)  
 ELEV. 403.103 (CL)  
 NO V.C.

PVI  
 ELEV. 402.693  
 20 m V.C.

PVI  
 ELEV. 402.743  
 NO V.C.

CONST. 250 mm THICK  
 1.8m SIDEWALK SECTION  
 FROM BRIDGE TO STA. 9+583.490

CONSTRUCT FULL HEIGHT CURB  
 AND GUTTER (150mm) ALONG  
 BOTH SIDES

CONSTRUCT 1.8 m  
 SIDEWALK

CONSTRUCT 1.8 m  
 SIDEWALK

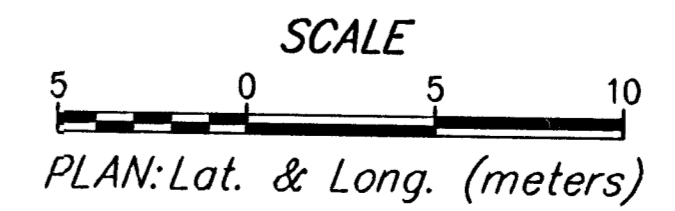
STA. 9+583.490  
 END CONCRETE  
 BRIDGE APPROACH  
 PAVEMENT

STA. 9+582.546 TO STA. 9+614.050  
 PAVEMENT CROSS SLOPE CHANGES  
 FROM 1.16% TO 3.13%

STA. 9+582.546, 10 950 RT.  
 ADJUST SANITARY SEWER MANHOLE.  
 TOP = 403.418

CONST. 250 mm THICK  
 1.8m SIDEWALK SECTION  
 FROM BRIDGE TO STA. 9+583.490

SEE BRIDGE PLANS  
 SHEETS 28 TO 44



MAPLE IMPROVEMENTS - 135TH ST. W. TO 119TH ST. W.  
 PAVING PLANS STA 9+537.849 TO 9+700

**SRB** 924 NORTH MAIN 316-264-8008  
 WICHITA, KANSAS 67203 FAX 264-4821  
 www.srb.com E-Mail: srbs@srb.com

**SAVOY, RUGGLES & BOHM, P. A.**  
 ENGINEERING & SURVEYING

PROJECT NUMBER  
 472-76-245-83262-000-000-001

DESIGN	DATE	UTILITY	SRB JOB
JOS	Oct. 1, 2001		1217T