

WATER DISTRIBUTION PLANS FOR
COURTYARDS AT BROOKFIELD ADD.
PHASE 1

©2017 MKEC Engineering
All Rights Reserved
www.mkec.com
These drawings and their contents, including, but not limited to, all concepts, designs, & ideas are the exclusive property of MKEC Engineering (MKEC), and may not be used or reproduced in any way without the express consent of MKEC.

**BUBBLE MAP
PLAT IRONS**

PROJECT NO.	448-90849	
DATE	DEC. 2017	
SCALE	1" = 60'	
DESIGNED	DRAWN	CHECKED
ABC	ABC	ABC
NO.	REVISION	DATE
SHEET NO.		
11 OF 18		

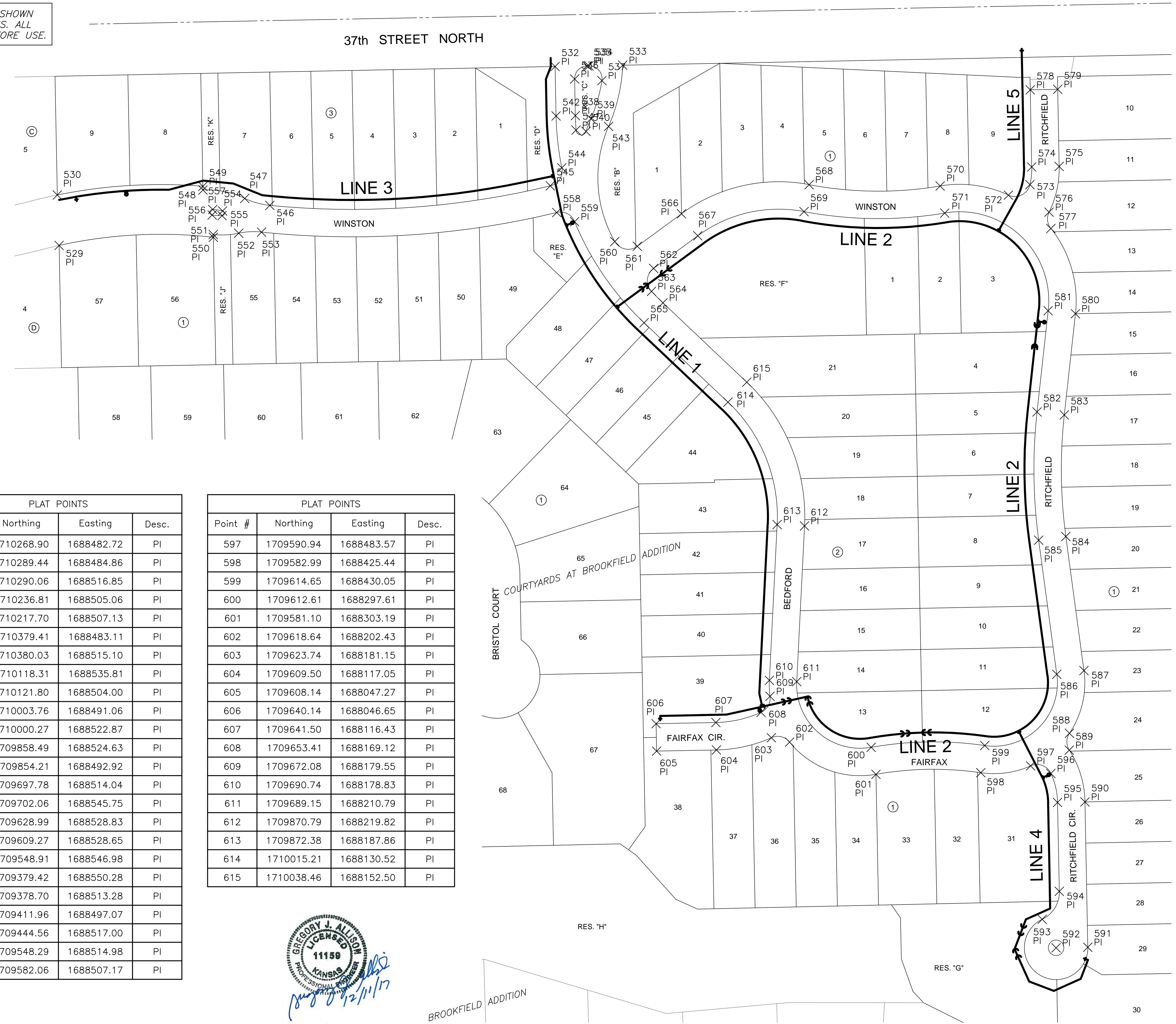
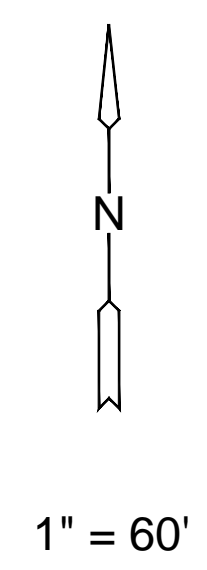
EVERY ATTEMPT HAS BEEN MADE TO INSURE ALL COORDINATE VALUES SHOWN ARE AN ACCURATE AND TRUE REPRESENTATION OF THE CURRENT PLANS. ALL VALUES ARE TO BE CONFIRMED WITH THE FINAL SIGNED PLAN SET BEFORE USE.

PROJECTS:2017/10/03/17 - PERFECTION COURTYARDS AT BROOKFIELD, 1837 CADSHIS06 CIVIL/WR/1837-CB-02.DWG
PLOTED: Tuesday, December 12, 2017 @ 02:39PM

PLAT POINTS			
Point #	Northing	Easting	Desc.
500	1710429.51	1686021.96	SC
501	1710481.53	1688693.98	SC
502	1707827.60	1688752.52	SC
503	1707777.19	1686089.24	SC
529	1710197.92	1687350.37	PI
530	1710256.76	1687348.23	PI
532	1710406.62	1687928.92	PI
533	1710408.16	1688007.77	PI
534	1710407.39	1687968.33	PI
535	1710407.35	1687966.42	PI
536	1710392.06	1687951.71	PI
537	1710390.15	1687983.46	PI
538	1710349.36	1687952.54	PI
539	1710345.77	1687970.67	PI
540	1710330.98	1687965.01	PI
541	1710332.42	1687953.33	PI
542	1710348.93	1687930.05	PI
543	1710336.78	1687991.29	PI
544	1710288.51	1687936.70	PI
545	1710267.44	1687923.29	PI
546	1710244.66	1687596.12	PI
547	1710252.80	1687566.87	PI
548	1710262.54	1687518.15	PI
549	1710266.88	1687518.06	PI
550	1710207.43	1687530.22	PI
551	1710210.65	1687530.16	PI
552	1710212.21	1687559.88	PI
553	1710213.48	1687586.49	PI
554	1710238.12	1687541.05	PI
555	1710232.70	1687540.46	PI
556	1710233.45	1687528.81	PI
557	1710239.91	1687529.52	PI
558	1710236.33	1687930.78	PI
559	1710225.68	1687951.65	PI
560	1710202.50	1687998.51	PI
561	1710196.93	1688024.82	PI
562	1710171.17	1688043.80	PI
563	1710144.38	1688041.34	PI
564	1710130.97	1688054.67	PI
565	1710107.72	1688032.68	PI
566	1710234.90	1688076.35	PI
567	1710209.14	1688095.33	PI
568	1710268.80	1688225.19	PI
569	1710237.35	1688219.23	PI
570	1710267.25	1688378.03	PI
571	1710235.69	1688383.35	PI
572	1710256.61	1688457.64	PI

PLAT POINTS			
Point #	Northing	Easting	Desc.
573	1710268.90	1688482.72	PI
574	1710289.44	1688484.86	PI
575	1710290.06	1688516.85	PI
576	1710236.81	1688505.06	PI
577	1710217.70	1688507.13	PI
578	1710379.41	1688483.11	PI
579	1710380.03	1688515.10	PI
580	1710118.31	1688535.81	PI
581	1710121.80	1688504.00	PI
582	1710003.76	1688491.06	PI
583	1710000.27	1688522.87	PI
584	1709858.49	1688524.63	PI
585	1709854.21	1688492.92	PI
586	1709697.78	1688514.04	PI
587	1709702.06	1688545.75	PI
588	1709628.99	1688528.83	PI
589	1709609.27	1688528.65	PI
590	1709548.91	1688546.98	PI
591	1709379.42	1688550.28	PI
592	1709378.70	1688513.28	PI
593	1709411.96	1688497.07	PI
594	1709444.56	1688517.00	PI
595	1709548.29	1688514.98	PI
596	1709582.06	1688507.17	PI

PLAT POINTS			
Point #	Northing	Easting	Desc.
597	1709590.94	1688483.57	PI
598	1709582.99	1688425.44	PI
599	1709614.65	1688430.05	PI
600	1709612.61	1688297.61	PI
601	1709581.10	1688303.19	PI
602	1709618.64	1688202.43	PI
603	1709623.74	1688181.15	PI
604	1709609.50	1688117.05	PI
605	1709608.14	1688047.27	PI
606	1709640.14	1688046.65	PI
607	1709641.50	1688116.43	PI
608	1709653.41	1688169.12	PI
609	1709672.08	1688179.55	PI
610	1709690.74	1688178.83	PI
611	1709689.15	1688210.79	PI
612	1709870.79	1688219.82	PI
613	1709872.38	1688187.86	PI
614	1710015.21	1688130.52	PI
615	1710038.46	1688152.50	PI



GREGORY J. ALLISON
LICENSED
11158
PROFESSIONAL ENGINEER
KANSAS
Gregory J. Allison
12/11/17