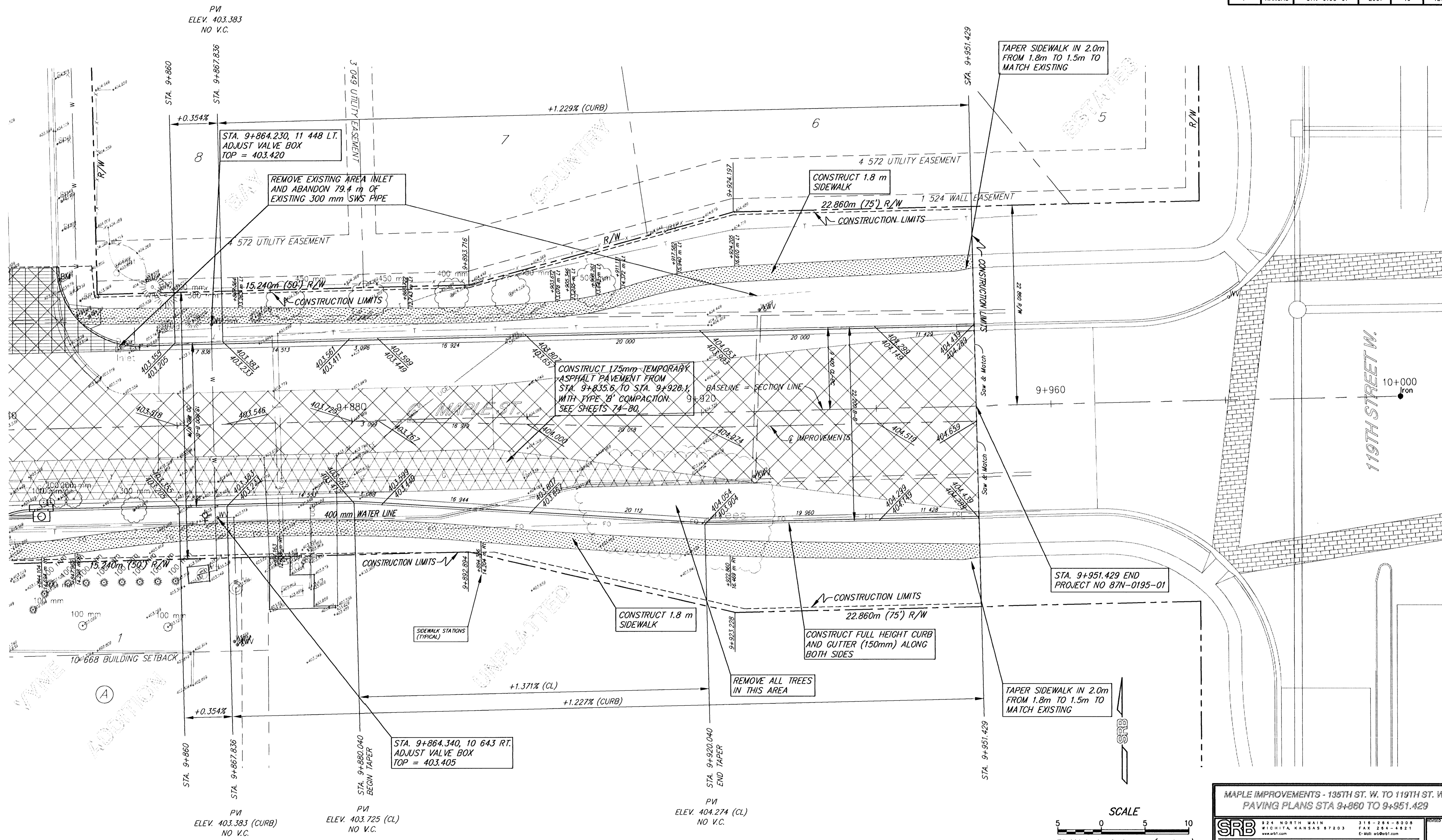


FHWA REGION NO.	STATE	PROJECT NUMBER	FISCAL YEAR	SHEET NUMBER	TOTAL SHEETS
7	KANSAS	87N-0195-01	2001	19	127

BY	DATE



PVI
ELEV. 403.383
NO V.C.

PVI
ELEV. 403.383 (CURB)
NO V.C.

PVI
ELEV. 403.725 (CL)
NO V.C.

PVI
ELEV. 404.274 (CL)
NO V.C.

TAPER SIDEWALK IN 2.0m
FROM 1.8m TO 1.5m TO
MATCH EXISTING

STA. 9+951.429 END
PROJECT NO 87N-0195-01

TAPER SIDEWALK IN 2.0m
FROM 1.8m TO 1.5m TO
MATCH EXISTING

CONSTRUCT 175mm TEMPORARY
ASPHALT PAVEMENT FROM
STA. 9+835.6 TO STA. 9+928.1
WITH TYPE 'B' COMPACTION.
SEE SHEETS 74-80.

CONSTRUCT 1.8 m
SIDEWALK

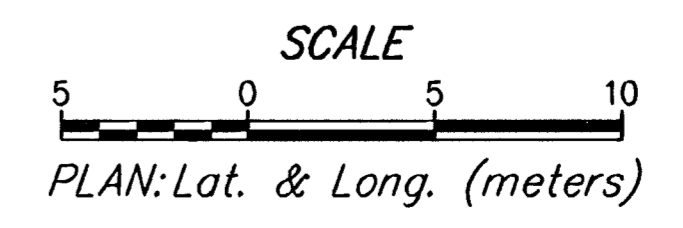
CONSTRUCT 1.8 m
SIDEWALK

CONSTRUCT FULL HEIGHT CURB
AND GUTTER (150mm) ALONG
BOTH SIDES

REMOVE ALL TREES
IN THIS AREA

STA. 9+864.230, 11 448 LT.
ADJUST VALVE BOX
TOP = 403.420

STA. 9+864.340, 10 643 RT.
ADJUST VALVE BOX
TOP = 403.405



MAPLE IMPROVEMENTS - 135TH ST. W. TO 119TH ST. W.
PAVING PLANS STA 9+860 TO 9+951.429

		924 NORTH MAIN WICHITA, KANSAS 67203 WWW.SRB.COM	316-284-8008 FAX 284-4821 E-Mail: us@srb1.com	REVISIONS 19 127
SAVOY, RUGGLES & BOHM, P.A. ENGINEERING & SURVEYING				
PROJECT NUMBER 472-76-245-83262-000-000-001				
DRAWN JDS	DESIGN JDS	REVIEW DATE Sept. 27, 2001	UTILITY SRB JOB 1217T	SHEET 19 TOTAL 127