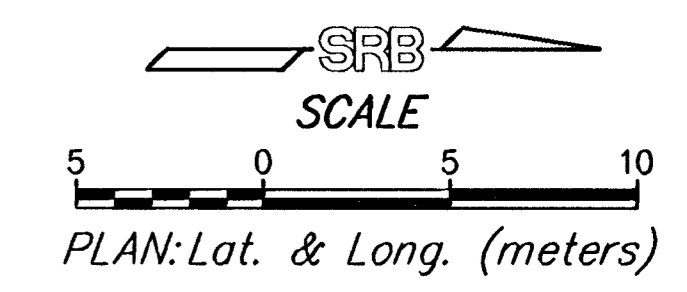


FHWA REGION NO.	STATE	PROJECT NUMBER	FISCAL YEAR	SHEET NUMBER	TOTAL SHEETS
7	KANSAS	87N-0195-01	2001	21	127



BY	DATE
REFERENCES NOTED	
REFERENCES CHECKED	

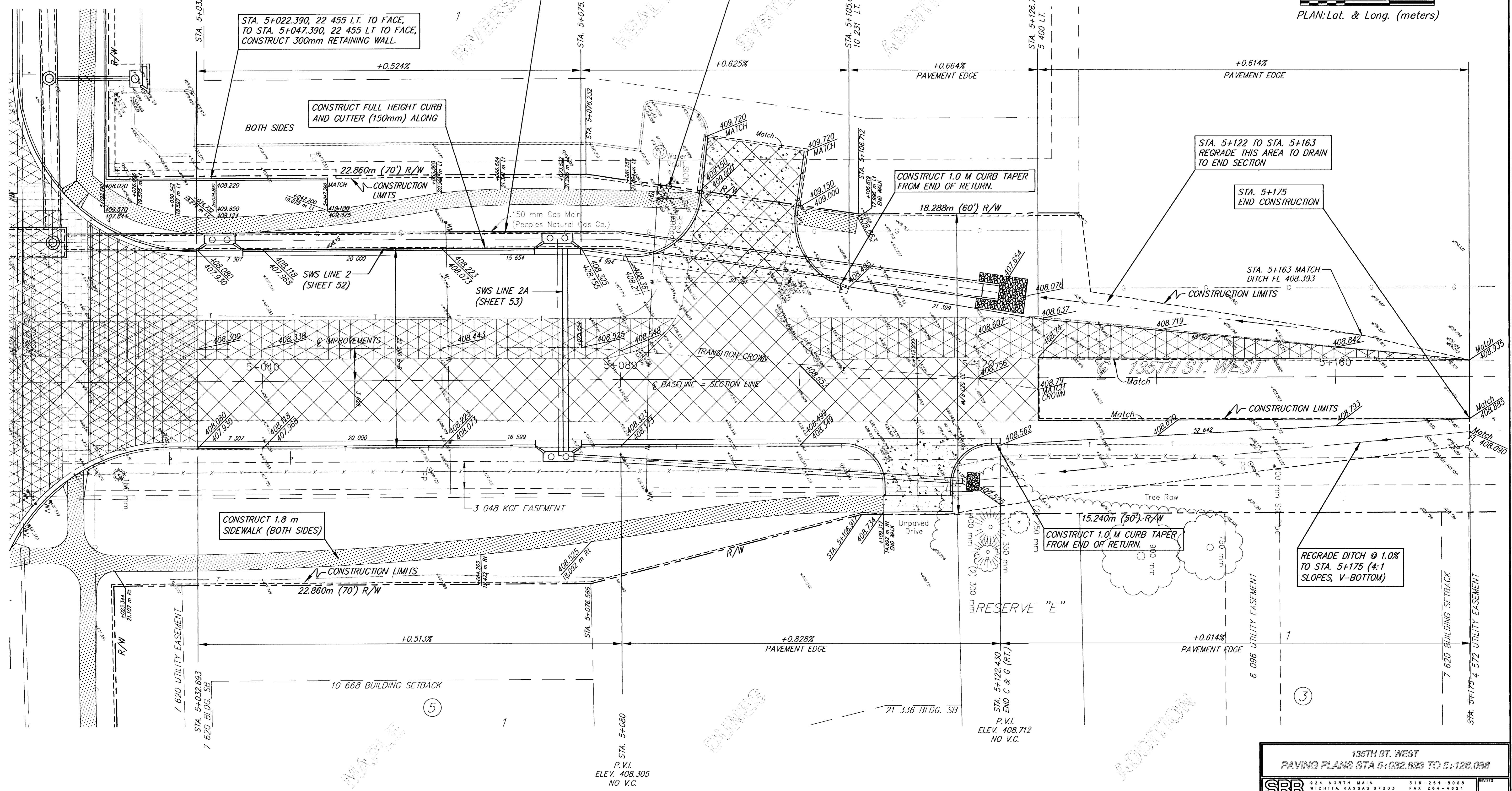
NOTE: SEE INTERSECTION DETAIL SHEET FOR WHEELCHAIR RAMP LAYOUT AND SIZE SHEET 22

NOTE: SEE INTERSECTION SIGNAGE SHEET FOR RELOCATION OF EXISTING SIGNS SHEET 92

150 mm GAS MAIN TO BE RELOCATED BY PEOPLES GAS PRIOR TO CONSTRUCTION.
P.V.I. ELEV. 408.305 NO V.C.

FIRE HYDRANT TO BE RELOCATED BY CITY OF WICHITA WATER & SEWER DEPT. PRIOR TO CONSTRUCTION.
P.V.I. ELEV. 408.645 NO V.C.

P.V.I. ELEV. 408.788 NO V.C.



**135TH ST. WEST
PAVING PLANS STA 5+032.693 TO 5+126.088**

SRB		224 NORTH MAIN WICHITA, KANSAS 67203 www.srb.com	318-264-8008 FAX 264-4821 E-Mail: us@srb.com	REVISED
SAVOY, RUGGLES & BOHM, P.A. ENGINEERING & SURVEYING				
PROJECT NUMBER 472-76-245-83262-000-000-001				
DRAWN JDS	DESIGN JDS	REVIEW	DATE Oct. 1, 2001	UTILITY SRB JOB 1217T
				SHEET 21 OF 127