

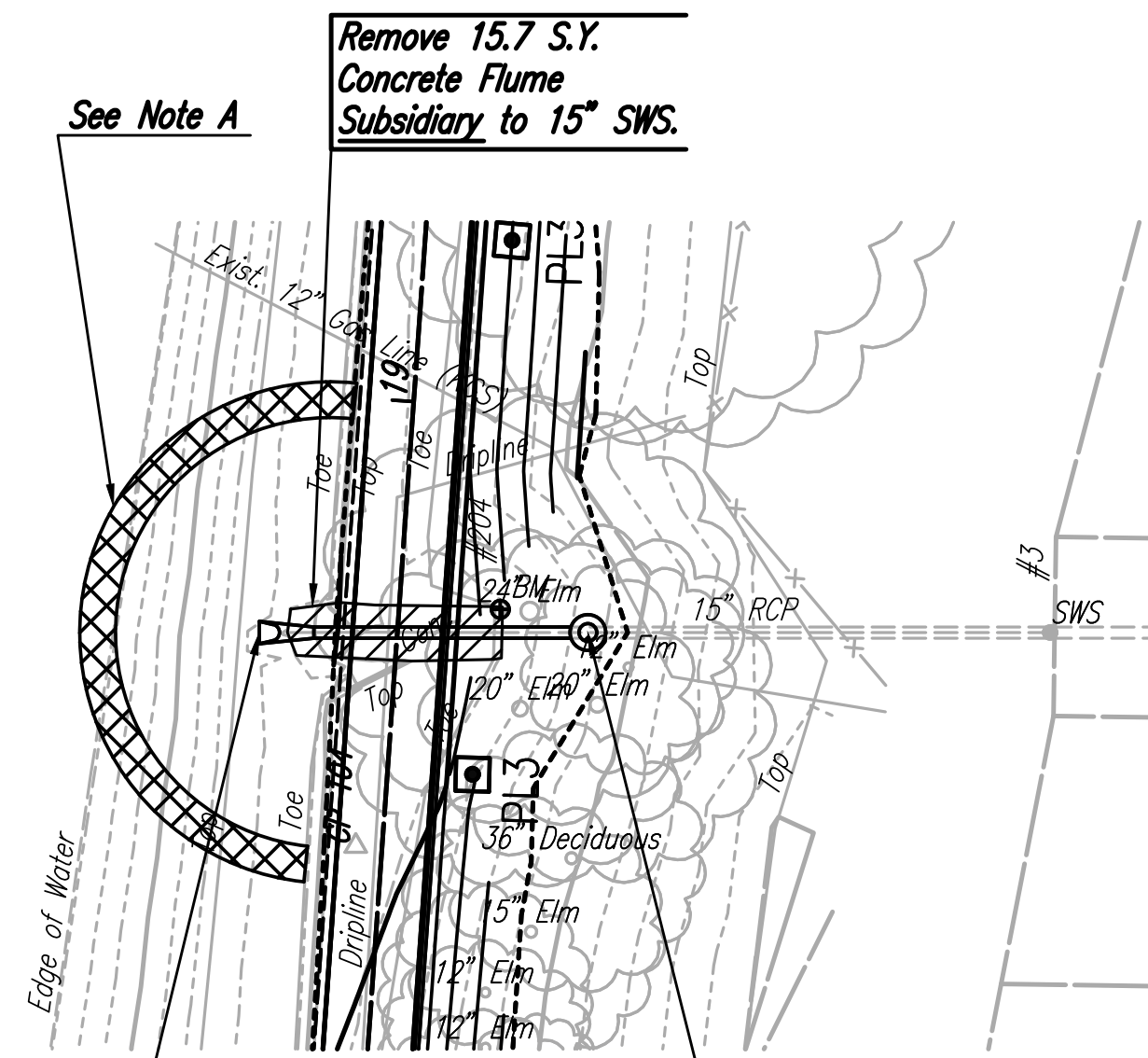
PLAN	CHECKED	DATE
	CHECKED	

PROFILE	CHECKED	DATE
	CHECKED	

Saved: 11-09-2017 12:15:57 PM by: BUS
 Plot Scale: 1:1 11-09-2017 12:52:48 PM by: BUS
 U:\Wichita-Civil\2016\160312\001\Main-Trans\Drawings\160312-001-13C-SWS LINE NOS. 1 AND 2

COORDINATE LIST		
POINT	NORTH	EAST
7100	1,681,432.3260	1,647,295.4482
7101	1,681,433.3541	1,647,332.1233

7100 = COORDINATE POINT NO.



Remove 15.7 S.Y. Concrete Flume Subsidiary to 15" SWS.

See Note A

Note A: Construct Suitable Cofferdam and Dewater as Necessary to Construct SWS Line No. 1. Cofferdam may be of Compacted Earth Material or Sheet Piles. Upon Completion of Drainage Improvements, Remove Cofferdam and Restore Banks to Pre-Existing Condition. This work shall be Subsidiary to "15" RCP".

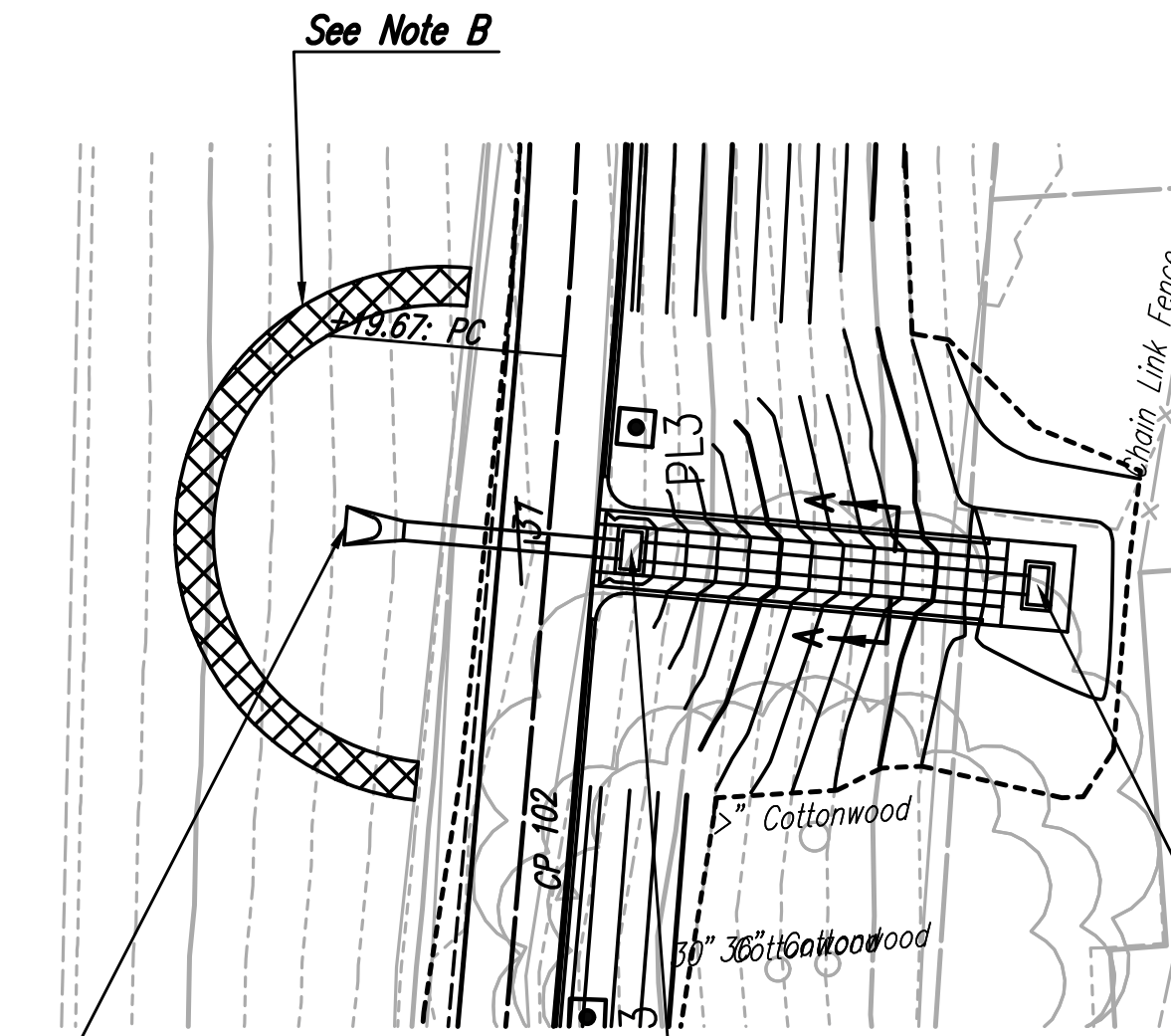
Sta. 9+63.3 SWS Line No. 1
 Install 15" RC End Section
 First 2 Sections of RCP Pipe
 Shall have Restraint Coupler.
 See Sheet No. 17

Sta. 10+00.0 SWS Line No. 1
 Install Precast Shallow Concrete Manhole
 Dia.=4'-0"
 Top Elev.=1288.50
 Install 36.7 L.F. 15" RCP (W)
 See Sheet No. 16.

SWS LINE NO. 1

COORDINATE LIST		
POINT	NORTH	EAST
7200	1,682,653.2048	1,647,424.1655
7201	1,682,649.1777	1,647,453.8940
7202	1,682,643.4392	1,647,496.2570

7200 = COORDINATE POINT NO.



See Note B

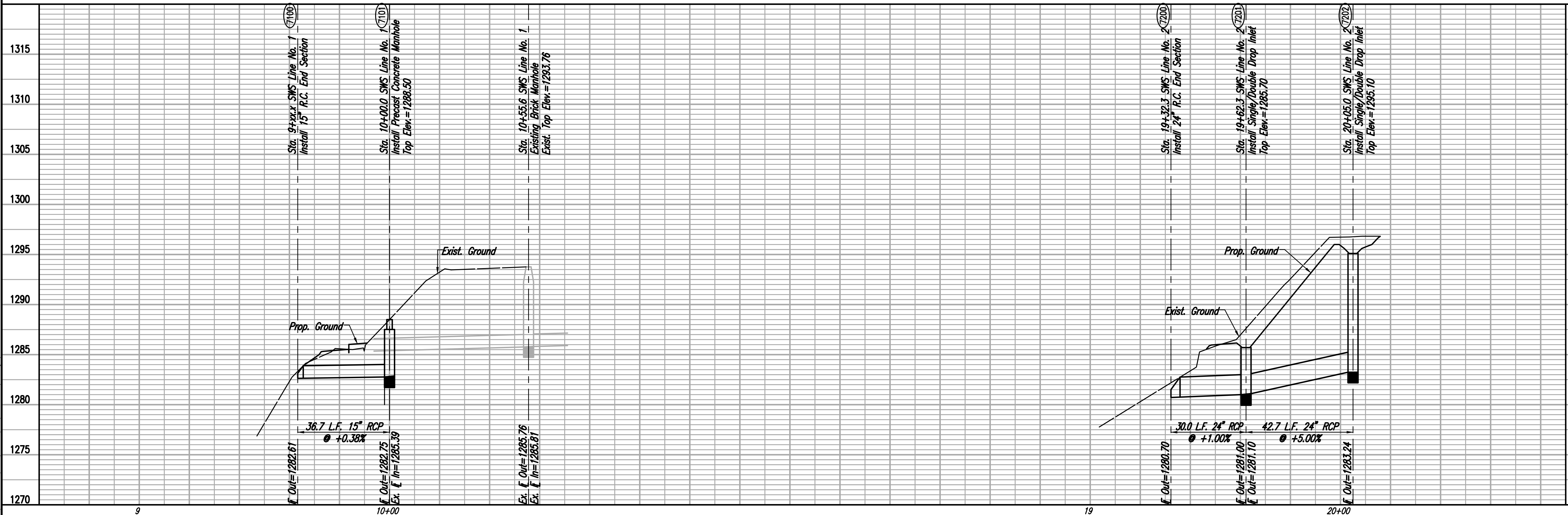
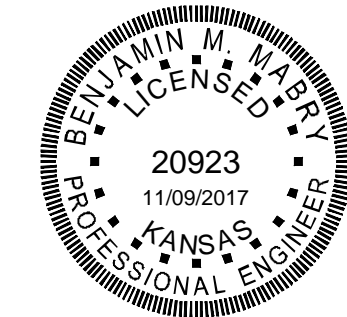
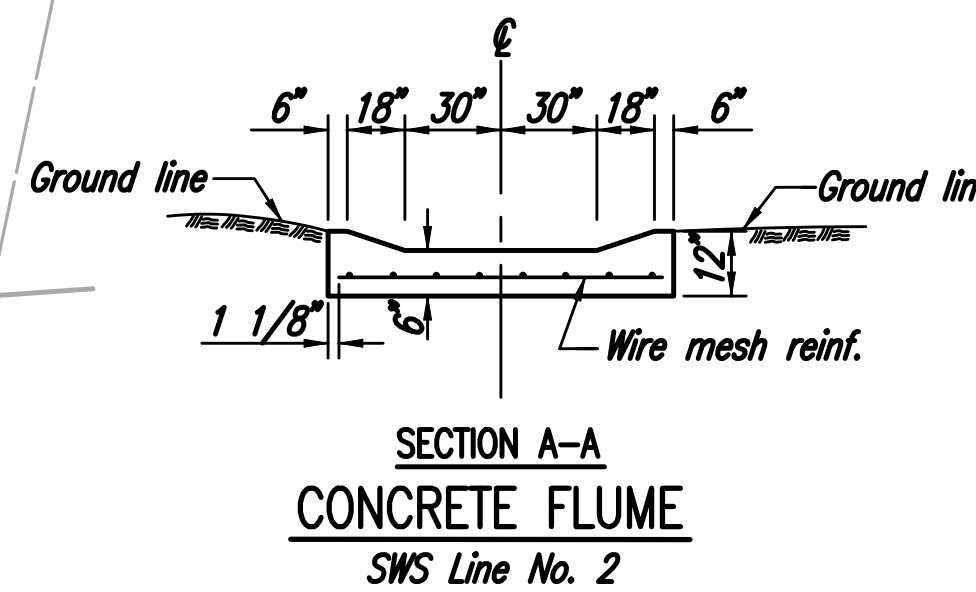
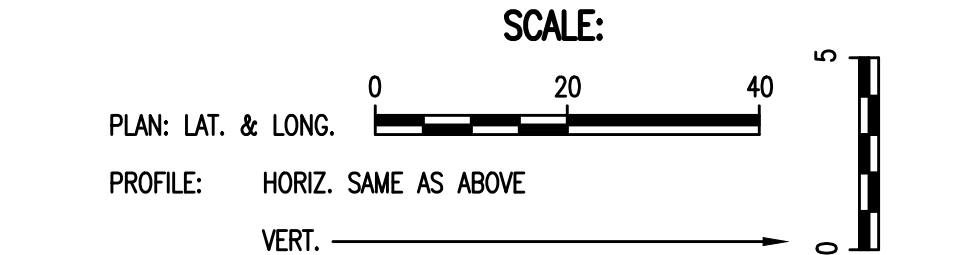
Note B: Construct Suitable Cofferdam and Dewater as Necessary to Construct SWS Line No. 2. Cofferdam may be of Compacted Earth Material or Sheet Piles. Upon Completion of Drainage Improvements, Remove Cofferdam and Restore Banks to Pre-Existing Condition. This work shall be Subsidiary to "24" RCP".

Sta. 19+32.3 SWS Line No. 2
 Install 24" RC End Section.
 First 2 Sections of RCP Pipe
 Shall have Restraint Coupler.
 See Sheet No. 17

Sta. 19+62.3 SWS Line No. 2
 Install Single/Double Drop Inlet
 L=4'-0", W=2'-0"
 Top Elev.=1285.70
 Install 30.0 L.F. 24" RCP (W)
 See Sheet No. 14.

Sta. 20+05.0 SWS Line No. 2
 Install Single/Double Drop Inlet
 L=4'-0", W=2'-0"
 Top Elev.=1295.10
 Install 42.7 L.F. 24" RCP (W)
 See Sheet No. 14.

SWS LINE NO. 2



EAST BANK ARK RIVER-LINCOLN TO GANDER MOUNTAIN
 SIDEWALK IMPROVEMENTS

SWS LINE NOS. 1 AND 2

PROFESSIONAL ENGINEERING CONSULTANTS, P.A.
 303 SOUTH TOPEKA WICHITA, KS 67202
 316-262-2691 www.pec.com

PEC

Designed By: BMM
 Drawn By: BUS

Job No.: 31-160312-001
 Date: November 2017

CARY JANZEN, P.E. - CITY ENGINEER
 CITY OF WICHITA, PROJECT NO. 477-65303

Sheet 13 of 37