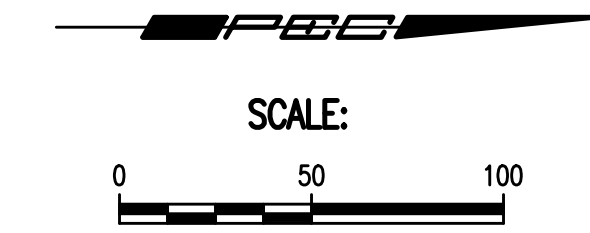
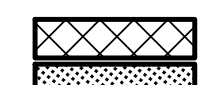




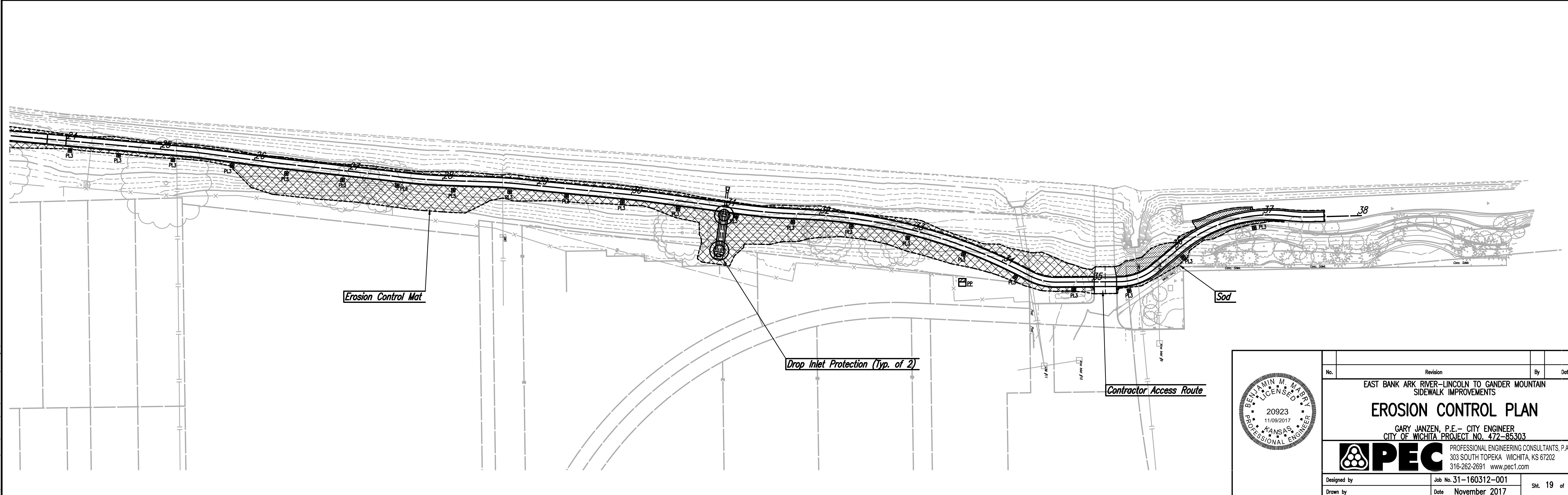
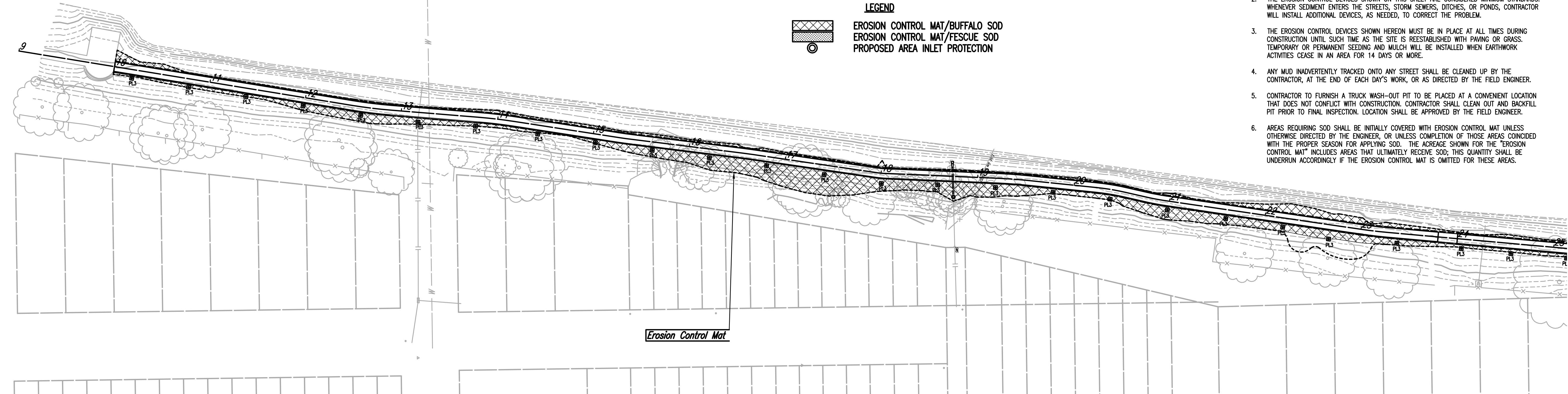
GENERAL NOTES

- CONTRACTOR SHALL INSTALL AND MAINTAIN EROSION PROTECTION THROUGHOUT THE ENTIRE PROJECT. THE FOLLOWING QUANTITIES SHALL BE INCLUDED IN BID ITEMS FOR EACH RESPECTIVE PART. EROSION PROTECTION SHALL BE INCLUDED IN THE BID AS FOLLOWS:
 



PAVING AND DRAINAGE (472-85303)	
AREA INLET PROTECTION	2 EACH
EROSION CONTROL MAT/BUFFALO SOD	4,215 S.Y.
EROSION CONTROL MAT/FESCUE SOD	196 S.Y.
- THE EROSION CONTROL DEVICES SHOWN ON THIS SHEET ARE CONSIDERED MINIMUM STANDARDS. WHENEVER SEDIMENT ENTERS THE STREETS, STORM SEWERS, DITCHES, OR PONDS, CONTRACTOR WILL INSTALL ADDITIONAL DEVICES, AS NEEDED, TO CORRECT THE PROBLEM.
- THE EROSION CONTROL DEVICES SHOWN HEREON MUST BE IN PLACE AT ALL TIMES DURING CONSTRUCTION UNTIL SUCH TIME AS THE SITE IS REESTABLISHED WITH PAVING OR GRASS. TEMPORARY OR PERMANENT SEEDING AND MULCH WILL BE INSTALLED WHEN EARTHWORK ACTIVITIES CEASE IN AN AREA FOR 14 DAYS OR MORE.
- ANY MUD INADVERTENTLY TRACKED ONTO ANY STREET SHALL BE CLEANED UP BY THE CONTRACTOR, AT THE END OF EACH DAY'S WORK, OR AS DIRECTED BY THE FIELD ENGINEER.
- CONTRACTOR TO FURNISH A TRUCK WASH-OUT PIT TO BE PLACED AT A CONVENIENT LOCATION THAT DOES NOT CONFLICT WITH CONSTRUCTION. CONTRACTOR SHALL CLEAN OUT AND BACKFILL PIT PRIOR TO FINAL INSPECTION. LOCATION SHALL BE APPROVED BY THE FIELD ENGINEER.
- AREAS REQUIRING SOD SHALL BE INITIALLY COVERED WITH EROSION CONTROL MAT UNLESS OTHERWISE DIRECTED BY THE ENGINEER, OR UNLESS COMPLETION OF THOSE AREAS COINCIDED WITH THE PROPER SEASON FOR APPLYING SOD. THE ACREAGE SHOWN FOR THE "EROSION CONTROL MAT" INCLUDES AREAS THAT ULTIMATELY RECEIVE SOD; THIS QUANTITY SHALL BE UNDERRUN ACCORDINGLY IF THE EROSION CONTROL MAT IS OMITTED FOR THESE AREAS.



**LEGEND**  
 EROSION CONTROL MAT/BUFFALO SOD  
 EROSION CONTROL MAT/FESCUE SOD  
 PROPOSED AREA INLET PROTECTION



Saved: 11-09-2017 2:11:57 PM by: BS  
 Plot Scale: 1:1 11-09-2017 2:13:12 PM by: BS  
 U:\Wichita-Civil\2016\160312\001\Main-Forms\Drawings\160312-001-19C-EROSION CONTROL PLAN

	Revision		By	Date
	EAST BANK ARK RIVER-LINCOLN TO GANDER MOUNTAIN SIDEWALK IMPROVEMENTS <b>EROSION CONTROL PLAN</b> GARY JANZEN, P.E. - CITY ENGINEER CITY OF WICHITA PROJECT NO. 472-85303			
		PROFESSIONAL ENGINEERING CONSULTANTS, P.A. 303 SOUTH TOPEKA WICHITA, KS 67202 316-262-2691 www.pec1.com		
Designed by	Job No. 31-160312-001		Sht. 19 of 37	
Drawn by	Date November 2017			