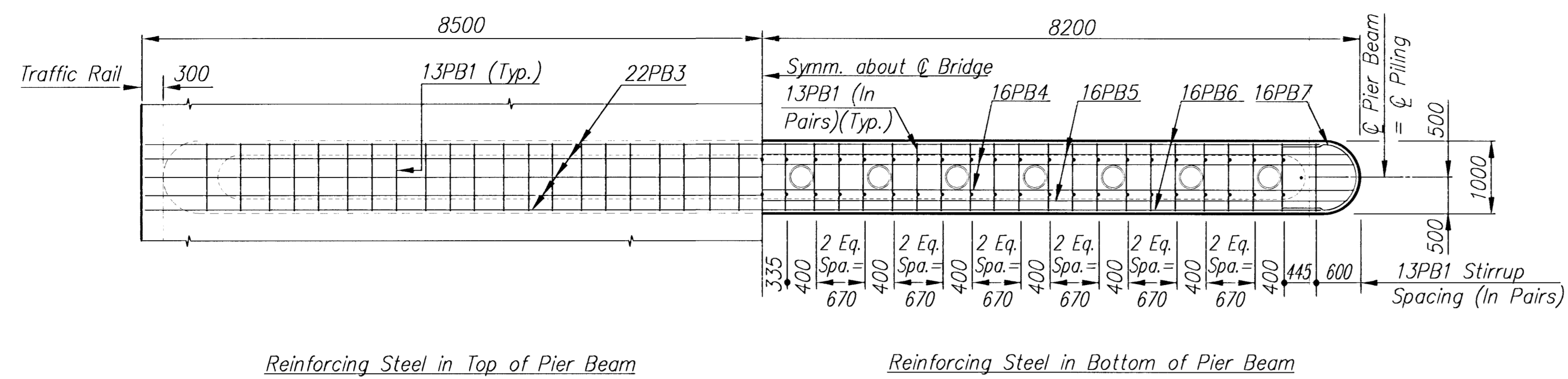
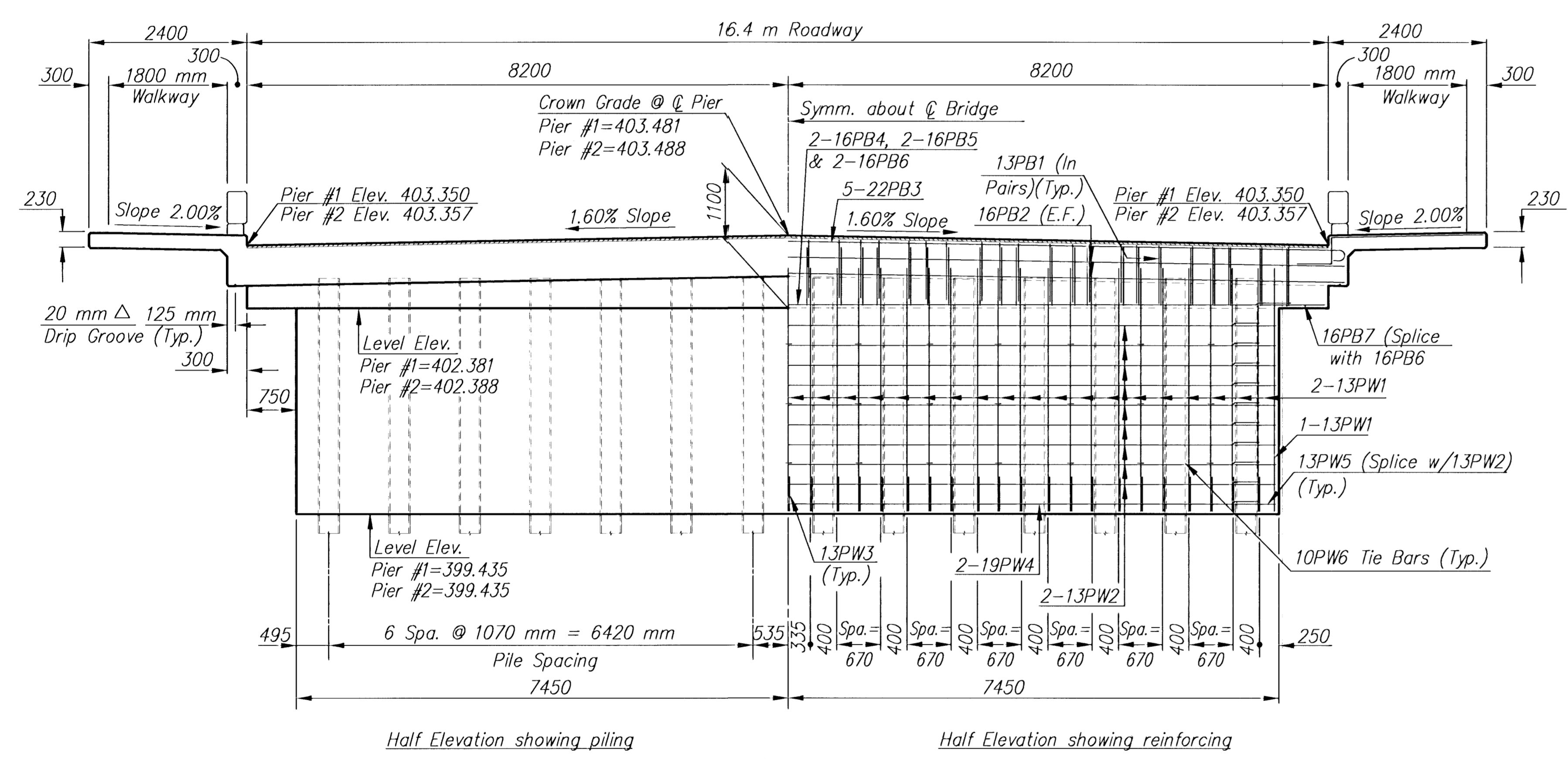


FHWA REG NO.	STATE	PROJECT NO.	YEAR	SHEET NO	TOTAL SHEETS
7	Kansas	87N-0195-01	2001	33	127

NOTE: See Corral Rail Detail Sheet for additional reinforcing steel.

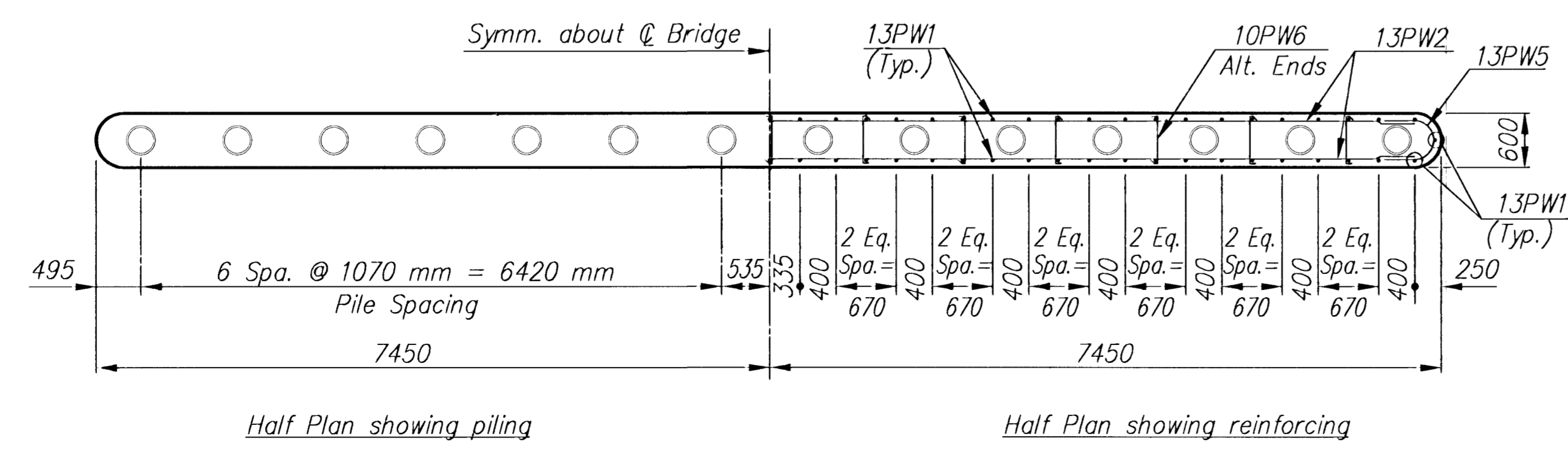
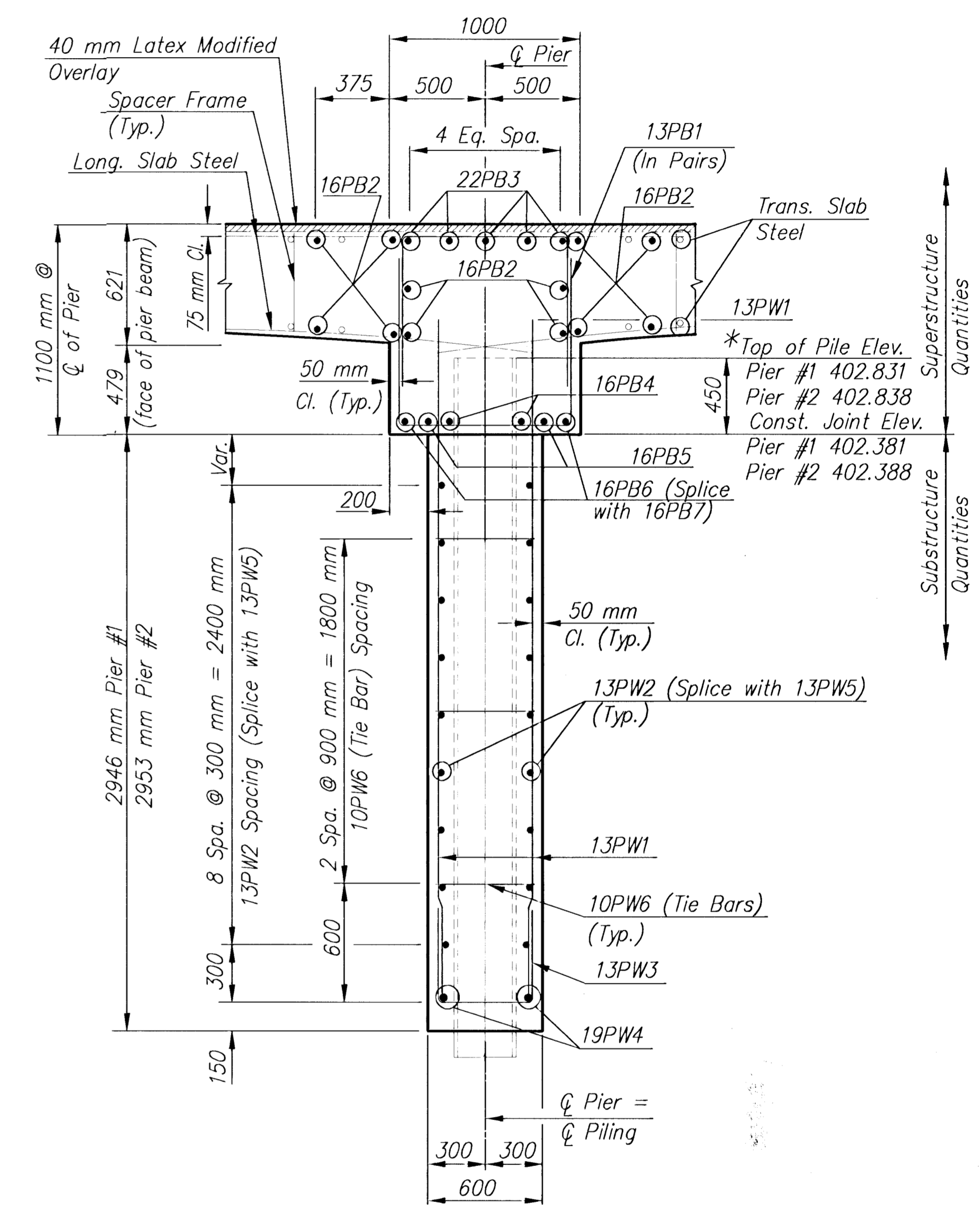


PIER BEAM PLAN



ELEVATION

* Note: Top of pile elevation is based on 450 mm embedment into the pier beam.



PIER WALL PLAN

PIER PILE LOADING

	Design	Allowable
Group I Loading	466 kN/Piling	466 kN/Piling

924 NORTH MAIN
WICHITA, KANSAS 67203

SAVOY, RUGGLES & BOHM, P. A.
ENGINEERING & SURVEYING

316-264-8008
FAX 264-4621

**MAPLE STREET BRIDGE
(OVER CALFSKIN CREEK)**

PROJECT NAME

PIER DETAILS

SHEET TITLE

 MKEC ENGINEERING CONSULTANTS 411 N. WEBB ROAD WICHITA, KS. 67206 316-684-9600	MDK DESIGN BY: MAY 2001 DATE	DPG DRAWN BY: 00142PIR DRAWING NAME	KJS CHECKED BY: 33 / 127 SHEET / OF
--	--	---	---

H:\ACTIVL\00142\BRIDGE\00142PIR.DWG Wed Oct 03 10:46:49 2001