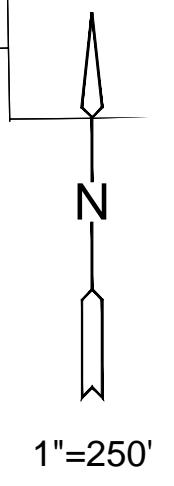
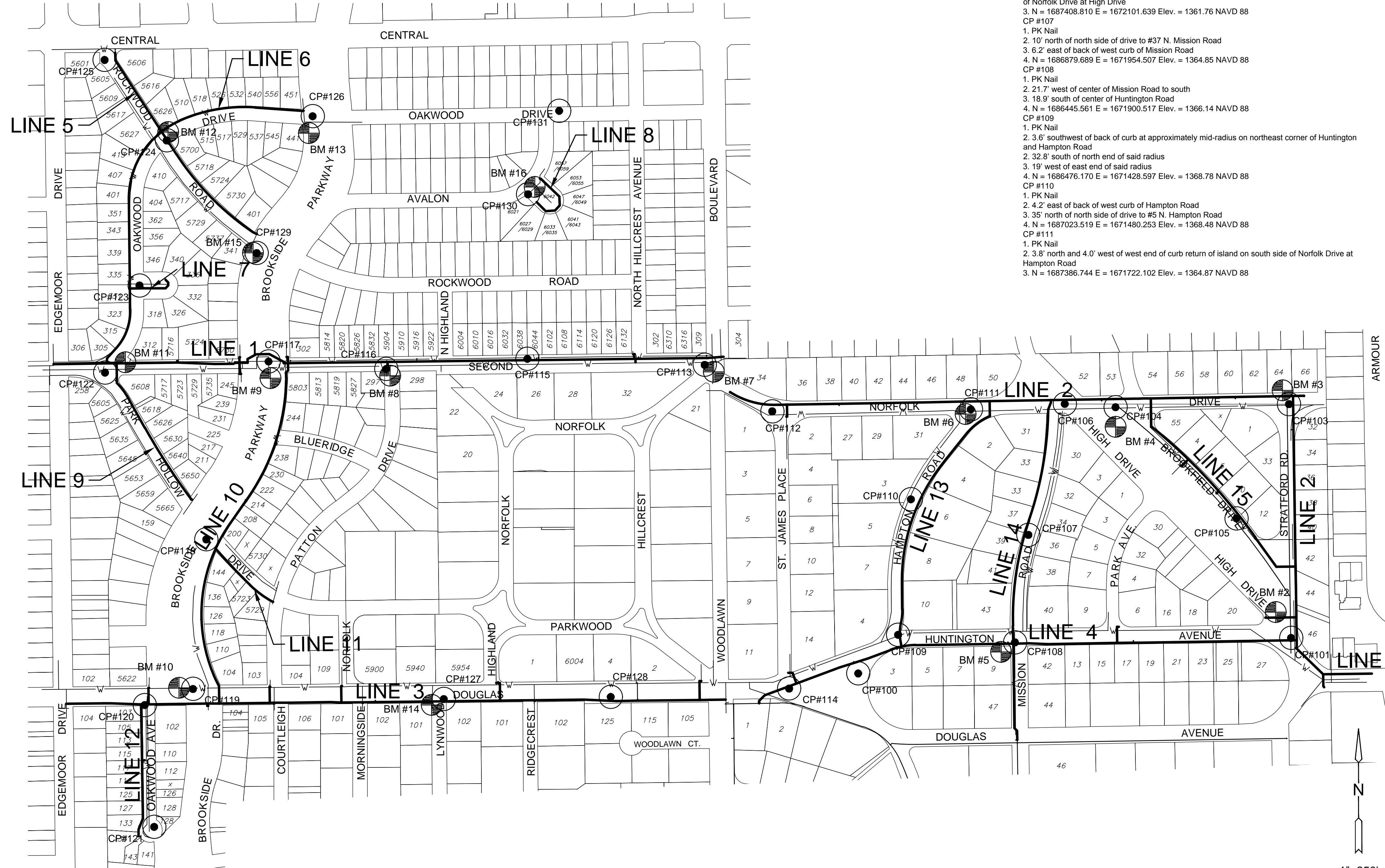


BENCHMARKS

- BM #2 Chiseled square on top of west curb of Stratford Road at north end of radius at south end of park at High Drive and Stratford Road. Elev. = 1356.27 NAVD 88
- BM #3 Chiseled square on top of north curb of Norfolk Drive, 10' east of center of Stratford Road to south. Elev. = 1361.305 NAVD 88
- BM #4 Chiseled square on top of curb 5' east of west end of southwest curb return at Norfolk Drive and Brookfield Drive. Elev. = 1360.51 NAVD 88
- BM #5 Chiseled square on top of curb at west end of southwest curb return at Huntington Avenue and Mission Road. Elev. = 1366.37 NAVD 88
- BM #6 Chiseled square on top of curb 18.8' east of east end of curb return on northwest corner of island on south side of Norfolk Drive and Hampton Road. Elev. = 1365.13 NAVD 88
- BM #7 Chiseled square on top of curb 1.3' north of south end of southeast curb return at 2nd Street and Hillcrest Avenue (northwest corner of island). Elev. = 1375.595 NAVD 88
- BM #8 Chiseled square on top of curb approximate center of curb return on southwest corner of 2nd Street and Patton Drive. 9.4' southeast of the west end of the curb return and 12.4' northwest of the south end of the curb return. Elev. = 1363.97 NAVD 88
- BM #9 Chiseled square on top of curb 1.0' west of west end of southwest curb return at 2nd Street and Brookside Parkway (Brookside Parkway on east side of drainage channel). Elev. = 1357.67 NAVD 88
- BM #10 City of Wichita benchmark disc in east end of headwall on north side of Douglas between the two Brookside Parkways. Elev. = 1353.865 NAVD 88
- BM #11 Chiseled square on top of curb approximate center of curb return on northeast corner of 2nd Street and Oakwood Drive. Elev. = 1363.13 NAVD 88
- BM #12 Chiseled square on top of curb at east end of northeast curb return at Rockwood Road and Oakwood Drive. Elev. = 1366.61 NAVD 88
- BM #13 Chiseled square on top of curb at south end of southwest curb return at Oakwood Drive and Brookside Parkway. Elev. = 1362.55 NAVD 88
- BM #14 Chiseled square on top of curb 5' west of west end of southwest curb return at Douglas and Lynwood. Elev. = 1366.075 NAVD 88
- BM #15 Chiseled square on top of curb 5' southwesterly of the south end of the southwest curb return at Rockwood Road and Brookside Pkwy. Elev. = 1360.315 NAVD 88
- BM #16 Chiseled square on top of curb at northwesterly nose of island in Avalon Court, southeasterly side of Avalon Street.

CONTROL POINTS

- CP #100 1. 5/8" rebar with 2" aluminum cap stamped "MKEC Engineering CLS 39"
- 2. In east end of park east of Douglas and Woodlawn
- 3. 68.4' southeasterly of center of Huntington Road
- 4. 19' northwesterly of center of Hampton Road
- 5. N = 1686320.199 E = 1671267.587 Elev. = 1369.61 NAVD 88
- CP #101 1. PK Nail
- 2. 2' west of back of east curb Stratford Road
- 3. 10' southwest of mailbox for #46 N. Stratford
- 4. N = 1686463.485 E = 1673015.273 Elev. = 1356.64 NAVD 88
- CP #103 1. PK Nail
- 2. 8.6' south of center of center Norfolk Drive
- 3. 6.4' east of center of Stratford Road to south
- 4. N = 1687407.907 E = 1673006.881 Elev. = 1361.295 NAVD 88
- CP #104 1. PK Nail
- 2. 9.9' south of center Norfolk Drive
- 3. 25.8' ENE of west end of curb return on southwest corner of Norfolk Drive and Brookfield Drive
- 4. N = 1687395.392 E = 1672306.497 Elev. = 1360.43 NAVD 88
- CP #105 1. 3.4' southwesterly of back of east curb of Brookfield Drive
- 2. 9' southwest of a light pole
- 3. Between drives to #10 and #12 N. Brookfield
- 4. N = 1686945.979 E = 1672794.870 Elev. = 1355.675 NAVD 88
- CP #106 1. PK Nail
- 2. 4.3' south and 6.6' east of west end of curb return on southeast corner of island on north side of Norfolk Drive at High Drive
- 3. N = 1687408.810 E = 1672101.639 Elev. = 1361.76 NAVD 88
- CP #107 1. PK Nail
- 2. 10' north of north side of drive to #37 N. Mission Road
- 3. 6.2' east of back of west curb of Mission Road
- 4. N = 1686879.689 E = 1671954.507 Elev. = 1364.85 NAVD 88
- CP #108 1. PK Nail
- 2. 21.7' west of center of Mission Road to south
- 3. 18.9' south of center of Huntington Road
- 4. N = 1686445.561 E = 1671900.517 Elev. = 1366.14 NAVD 88
- CP #109 1. PK Nail
- 2. 3.6' southwest of back of curb at approximately mid-radius on northeast corner of Huntington and Hampton Road
- 3. 32.8' south of north end of said radius
- 3. 19' west of east end of said radius
- 4. N = 1686476.170 E = 1671428.597 Elev. = 1368.78 NAVD 88
- CP #110 1. PK Nail
- 2. 4.2' east of back of west curb of Hampton Road
- 3. 35' north of north side of drive to #5 N. Hampton Road
- 4. N = 1687023.519 E = 1671480.253 Elev. = 1368.48 NAVD 88
- CP #111 1. PK Nail
- 2. 3.8' north and 4.0' west of west end of curb return of island on south side of Norfolk Drive at Hampton Road
- 3. N = 1687386.744 E = 1671722.102 Elev. = 1364.87 NAVD 88
- CP #112 1. PK Nail
- 2. 4.5' northwest of back of curb at northwest corner of island at Norfolk Dr. and St. James Pl.
- 3. 44' east of a 6" tree
- 4. N = 1687378.873 E = 1670920.620 Elev. = 1373.23 NAVD 88
- CP #113 1. PK Nail
- 2. 18.4' south of center of 2nd Street
- 3. 11.9' west of back of curb on west side of island in Hillcrest Avenue
- 4. N = 1687566.355 E = 1670648.044 Elev. = 1375.00 NAVD 88
- CP #114 1. PK Nail
- 2. center of Douglas to west
- 3. 18.0' west of face of curb inlet at west end of park
- 4. 27.4' east of center of Woodlawn
- 5. N = 1686259.315 E = 1670988.810 Elev. = 1368.475 NAVD 88
- CP #115 1. Chiseled "X" on top of north curb of 2nd Street
- 2. 5.4' west of west side of drive to 6044 E. 2nd
- 3. N = 1687590.961 E = 1669931.884 Elev. = 1375.39 NAVD 88
- CP #116 1. Chiseled "X" on top of curb at approximate center of curb radius on southwest corner of 2nd Street and Patton Drive
- 2. 9.4' southeast of the west end of the curb return
- 3. 12.4' northwest of the south end of the curb return
- 4. N = 1687550.200 E = 1669362.001 Elev. = 1363.97 NAVD 88
- CP #117 1. 5/8" rebar with red "MKEC Design Point" cap
- 2. 2.2' north of back of north curb of 2nd Street
- 3. 15.6' west of west end of northwest curb return at 2nd Street and Brookside Parkway on east side of drainage channel
- 4. N = 1687580.067 E = 1668886.897 Elev. = 1358.14 NAVD 88
- CP #118 1. 5/8" rebar with red "MKEC Design Point" cap
- 2. 2.2' north of back of north curb of 2nd Street
- 3. 15.6' west of west end of northwest curb return at 2nd Street and Brookside Parkway on east side of drainage channel
- 4. N = 1687580.067 E = 1668886.897 Elev. = 1358.14 NAVD 88
- CP #119 1. 5/8" rebar with red "MKEC Design Point" cap
- 2. 5.1' north of back of north curb of Douglas
- 3. 46.7' west of west end of northwest curb return at Douglas and Brookside Parkway on east side of drainage channel
- 4. N = 1686257.577 E = 1668581.865 Elev. = 1353.695 NAVD 88
- CP #120 1. PK Nail
- 2. 35.4' south of center of Douglas
- 3. 9.8' west of center of South Oakwood Avenue
- 4. N = 1686192.381 E = 1668386.951 Elev. = 1353.795 NAVD 88
- CP #121 1. PK Nail
- 2. On northeast side of cul-de-sac
- 3. 19.4' east of center of S. Oakwood
- 4. 23.5' southwest of a 4" tree
- 5. 42.7' north of the northeast corner of the east curb inlet of 2 curb inlets
- 6. N = 1685700.491 E = 1668425.025 Elev. = 1351.095 NAVD 88
- CP #122 1. Chiseled "X" in concrete pavement
- 2. 18.5' south of center of 2nd Street
- 3. 53' west of a power pole
- 4. 42' northeasterly of the back of curb in the radius on Park Hollow
- 5. N = 1687535.256 E = 1668226.715 Elev. = 1364.935 NAVD 88
- CP #123 1. PK Nail in top of curb at north end of southwest curb return of island in Oakwood Court
- 2. N = 1687887.104 E = 1668365.873 Elev. = 1366.065 NAVD 88
- CP #124 1. PK Nail in top of curb
- 2. 9' southwest of east end of southeast curb return at Rockwood Road and Oakwood Drive
- 3. N = 1688472.949 E = 1668475.853 Elev. = 1365.94 NAVD 88
- CP #125 1. PK Nail in top of curb
- 2. South side of first drive south of Central on west side of Rockwood Road
- 3. N = 1688797.971 E = 1668225.022 Elev. = 1372.695 NAVD 88
- CP #126 1. PK Nail
- 2. 4' north of center of Oakwood Drive
- 3. On east side of Brookside Parkway on west side of drainage channel
- 4. 44' southeast of north end of northwest curb return
- 5. 41.7' northeast of south end of southeast curb return
- 6. N = 1688570.679 E = 1669065.063 Elev. = 1362.75 NAVD 88
- CP #127 1. 5/8" rebar with red "MKEC Design Point" cap
- 2. 2.8' south and 4.5' west of east end of southeast curb return at Douglas and Lynwood
- 3. 5' WNW of a light pole
- 4. N = 1686216.824 E = 1669594.509 Elev. = 1366.935 NAVD 88
- CP #128 1. 5/8" rebar with red "MKEC Design Point" cap
- 2. 2.2' south of back of south curb Douglas
- 3. 446' west of center of Woodlawn
- 4. 52.9' ENE of a telephone manhole
- 5. 79' west of a light pole
- 6. N = 1686225.527 E = 1670268.563 Elev. = 1368.465 NAVD 88
- CP #129 1. PK Nail
- 2. East side of Brookside Pkwy., west side of drainage channel, and south side Rockwood Road
- 3. 30.8' southeast of south end of southwest curb return
- 4. 13.3' WSW of center of sanitary sewer manhole
- 5. N = 1688017.949 E = 1668839.048 Elev. = 1359.70 NAVD 88
- CP #130 1. PK Nail
- 2. 3.5' ENE of the south end of the southwest curb return at Avalon Road and Avalon Court
- 3. N = 1688255.418 E = 1669934.706 Elev. = 1377.815 NAVD 88
- CP #131 1. Chiseled "X" on top of north curb of Oakwood Drive
- 2. 17.7' east of the beginning of the radius for the drive to 6102 E. Oakwood Drive
- 3. 17.8' west of the beginning of the radius for the drive to 6104 E. Oakwood Drive
- 4. N = 1688592.553 E = 1670060.091 Elev. = 1379.315 NAVD 88



WATER LINE REPLACEMENT PLANS
EASTBOROUGH NORTH
DESIGN



©2013 MKEC Engineering All Rights Reserved
These drawings and their contents, including, but not limited to, all concepts, designs, & ideas are the exclusive property of MKEC Engineering (MKEC), and may not be used or reproduced in any way without the express consent of MKEC.

BENCHMARKS & CONTROL POINTS

PROJECT NO.	448-90610	
DATE	SEPT. 2017	
SCALE	AS SHOWN	
DESIGNED	DRAWN	CHECKED
JTC	DM	JRA
NO.	REVISION	DATE
SHEET NO.		
04 OF 77		