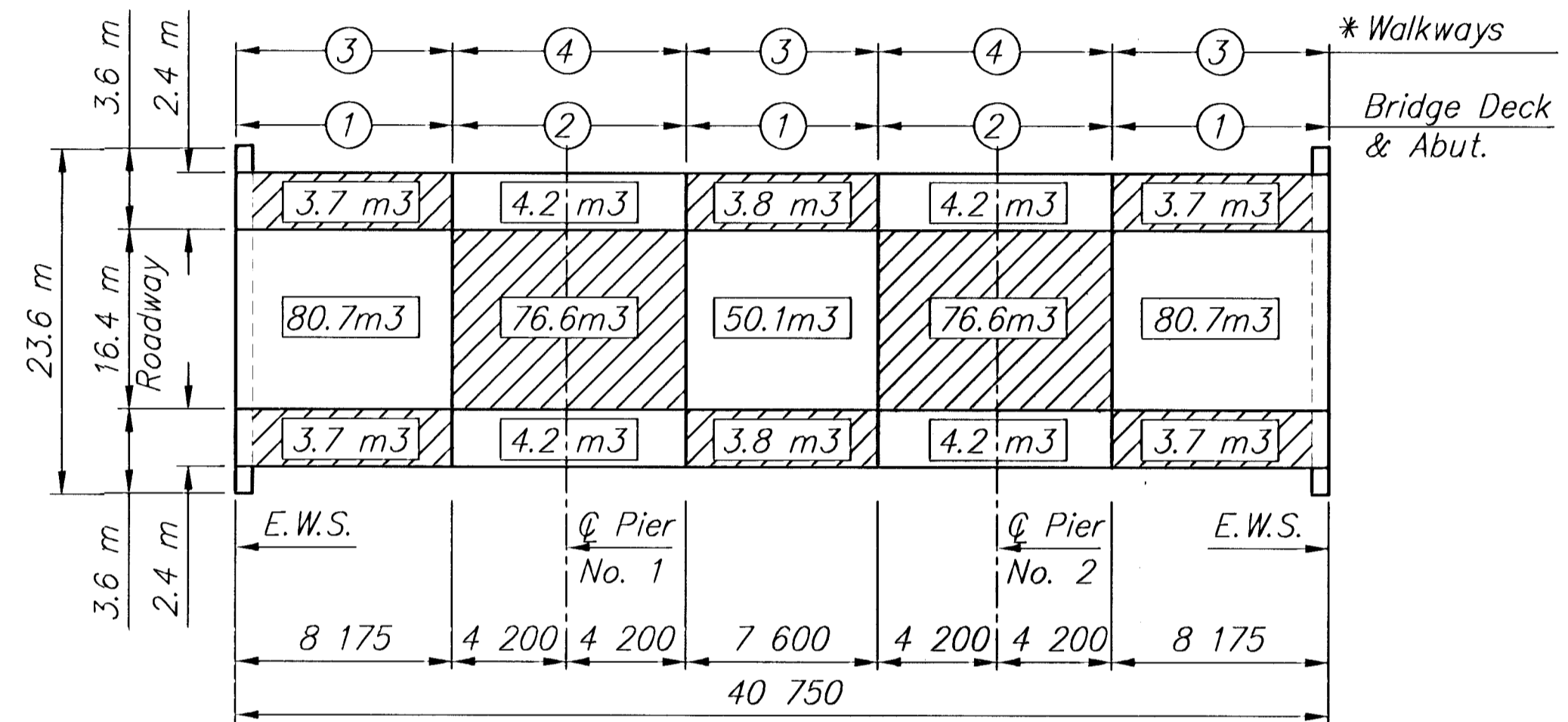
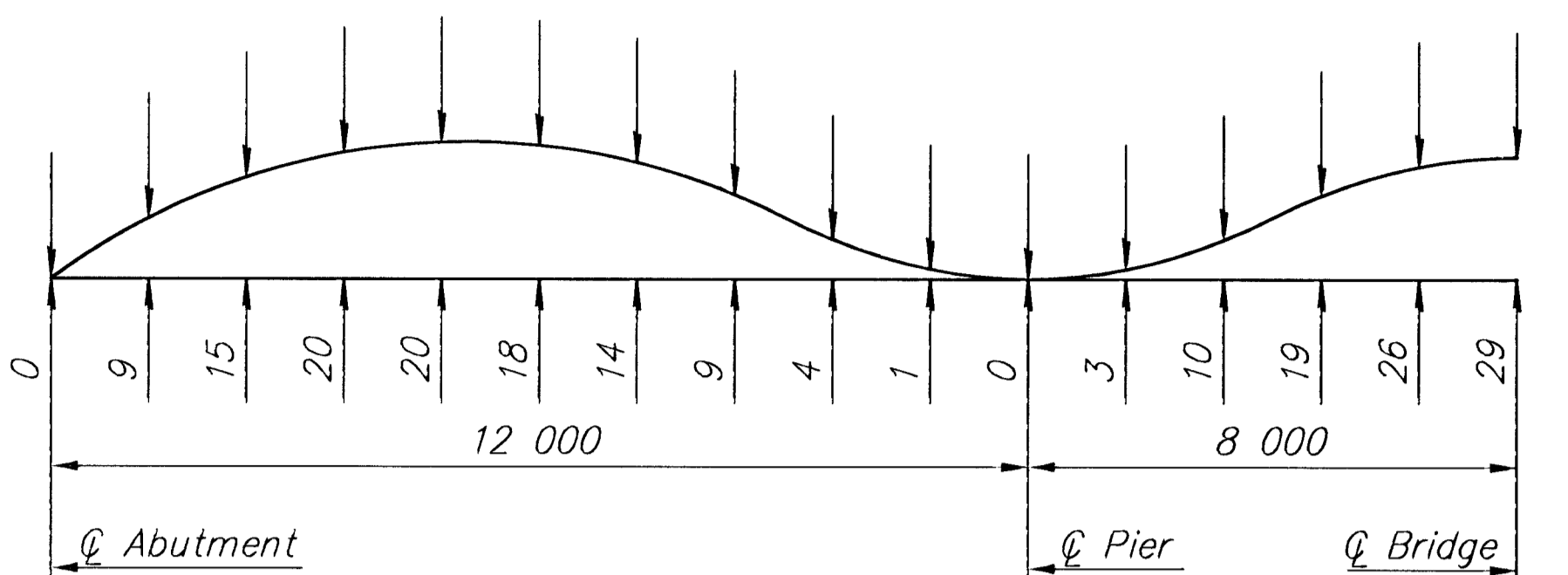
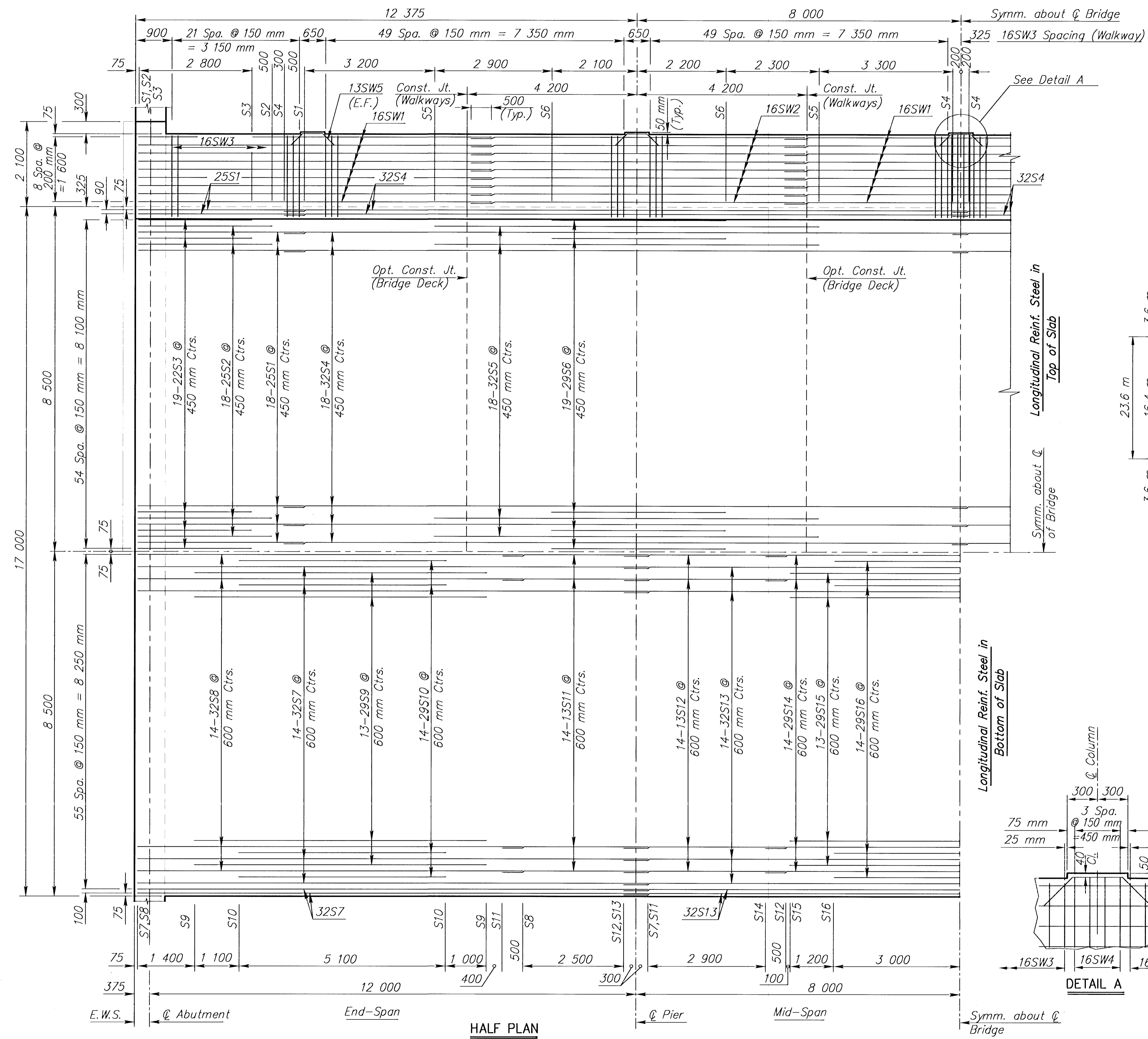


FHWA REG. NO. 7	STATE Kansas	PROJECT NO. 87N-0195-01	YEAR 2001	SHEET NO. 34	TOTAL SHEETS 127
-----------------	--------------	-------------------------	-----------	--------------	------------------

Note:
See longitudinal section for transverse reinforcing steel.



CONCRETE PLACING SEQUENCE DIAGRAM

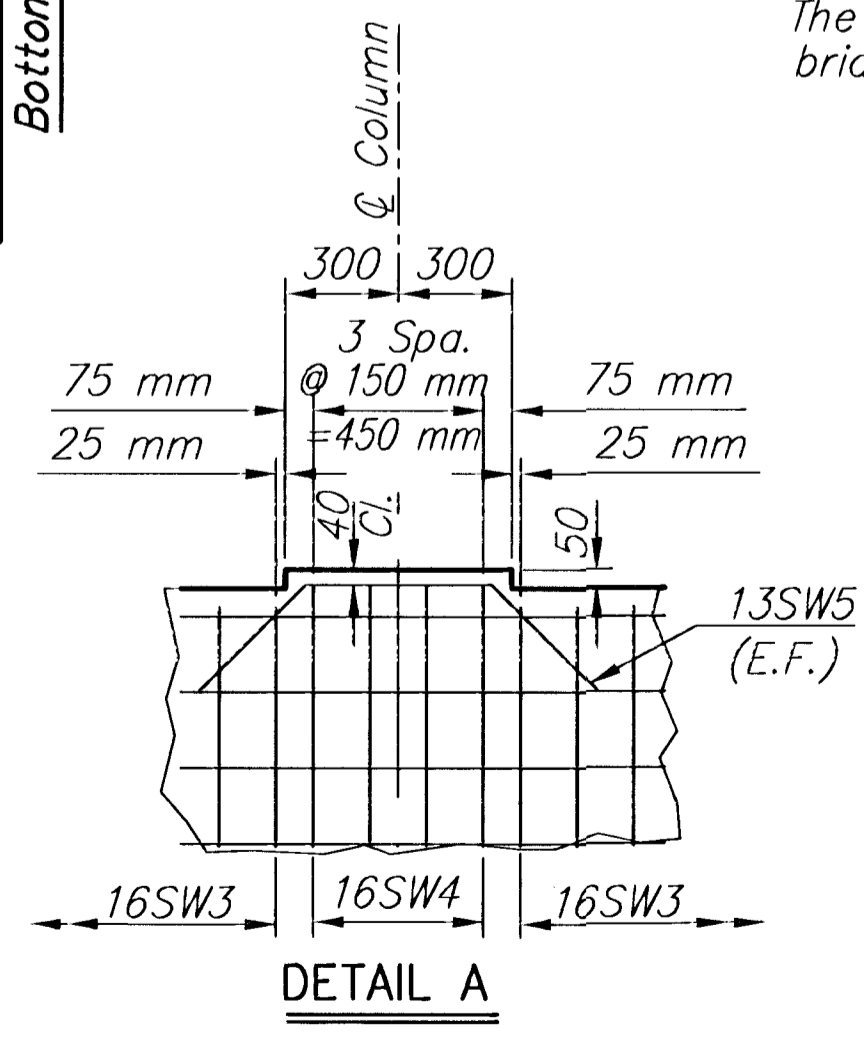
* Construct walkways in segments as shown.

CONCRETE PLACING SEQUENCE

When long span steel beams having a concrete dead load deflection greater than 5 mm are used or when timber falsework with greater than 3.75 m clear span is used, follow the placing sequence shown. Segmental, combined or continuous pours are allowed, but stop a discontinuous pour at a construction joint short of a pier.

When timber falsework with 3.75 m or less clear span is used, the Contractor, subject to the approval of the Engineer, may use a continuous pour or may discontinue the pour at any construction joint shown.

The Contractor may place the corral rail continuously from one end of the bridge to the other.



SRB 924 NORTH MAIN WICHITA, KANSAS 67203 316-264-8008 FAX 264-4621

SAVOY, RUGGLES & BOHM, P. A.
ENGINEERING & SURVEYING

MKEC ENGINEERING CONSULTANTS 411 N. WEBB ROAD WICHITA, KS. 67208 318-684-9600

MAPLE STREET BRIDGE (OVER CALFSKIN CREEK)
PROJECT NAME

SUPERSTRUCTURE DETAILS - PLAN
SHEET TITLE

MDK DESIGN BY: DPG DRAWN BY: KJS CHECKED BY:

NOVEMBER 2001 DATE 00142PLN DRAWING NAME 34 / 127 SHEET / OF

H:\CIVIL\00142\SRB\BRIDGE\00142PLN.DWG Mod. Nov. 21, 12:00:05 2001