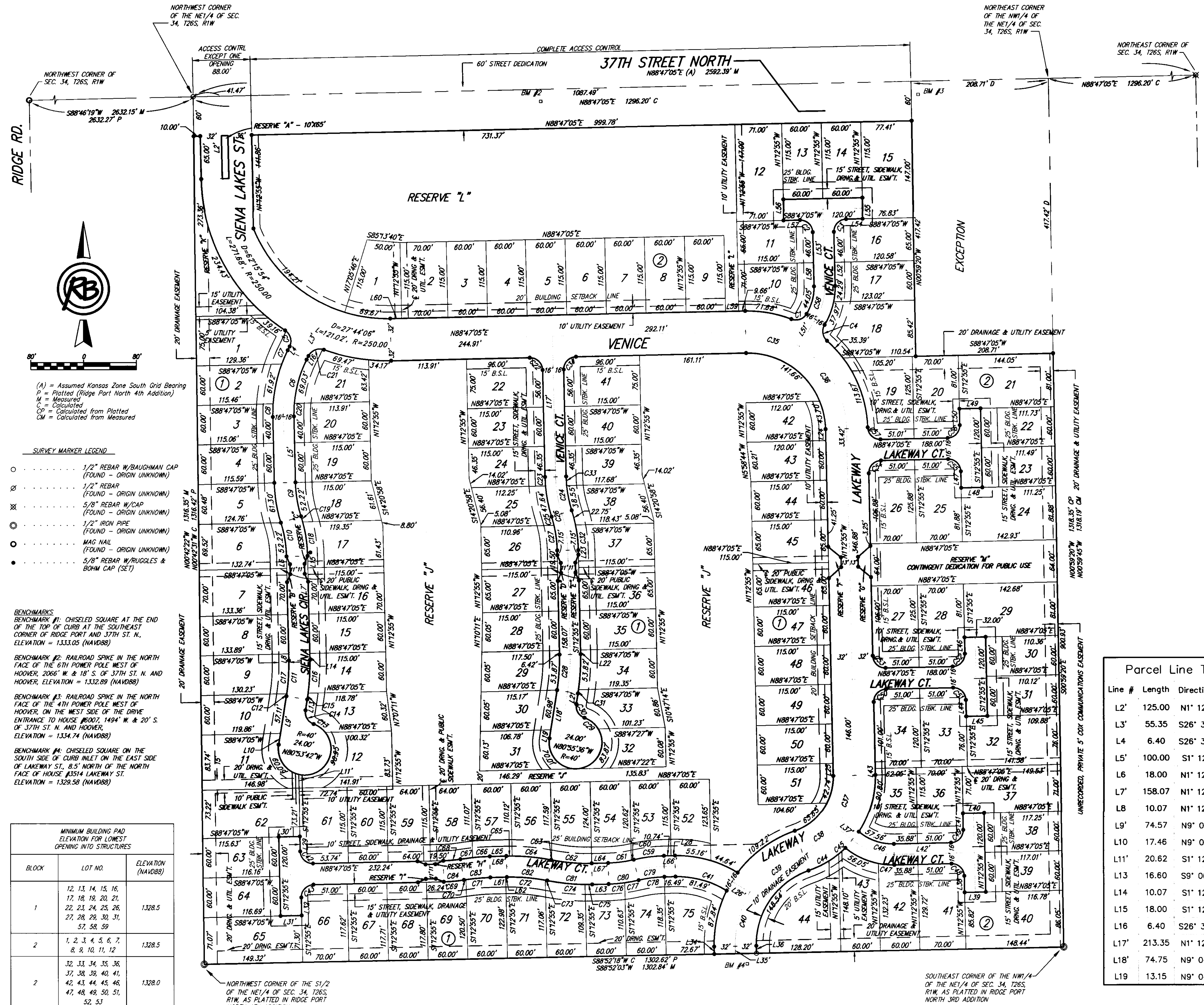


# SIENA LAKES

an Addition to Wichita, Sedgwick County, Kansas



(A) = Assumed Kansas Zone South Grid Bearing  
C = Platted (Ridge Port North 4th Addition)  
M = Measured  
Calculated  
CP = Calculated from Platted  
CM = Calculated from Measured

- SURVEY MARKER LEGEND**
- 1/2" REBAR W/ BAUGHMAN CAP (FOUND - ORIGIN UNKNOWN)
  - ⊗ 1/2" REBAR (FOUND - ORIGIN UNKNOWN)
  - ⊗ 5/8" REBAR W/ CAP (FOUND - ORIGIN UNKNOWN)
  - ⊗ 1/2" IRON PIPE (FOUND - ORIGIN UNKNOWN)
  - MAG NAIL (FOUND - ORIGIN UNKNOWN)
  - 5/8" REBAR W/ RUGGLES & BOHM CAP (SET)

**BENCHMARKS**  
BENCHMARK #1: CHISELED SQUARE AT THE END OF THE TOP OF CURB AT THE SOUTHEAST CORNER OF RIDGE PORT AND 37TH ST. N. ELEVATION = 1333.05 (NAVD88)  
BENCHMARK #2: RAILROAD SPIKE IN THE NORTH FACE OF THE 6TH POWER POLE WEST OF HOOVER, 2066' W. & 18' S. OF 37TH ST. N. AND HOOVER. ELEVATION = 1332.89 (NAVD88)  
BENCHMARK #3: RAILROAD SPIKE IN THE NORTH FACE OF THE 4TH POWER POLE WEST OF HOOVER, ON THE WEST SIDE OF THE DRIVE ENTRANCE TO HOUSE #607, 1494' W. & 20' S. OF 37TH ST. N. AND HOOVER. ELEVATION = 1334.74 (NAVD88)  
BENCHMARK #4: CHISELED SQUARE ON THE SOUTH SIDE OF CURB INLET ON THE EAST SIDE OF LAKEWAY ST. 8.5' NORTH OF THE NORTH FACE OF HOUSE #514 LAKEWAY ST. ELEVATION = 1329.58 (NAVD88)

MINIMUM BUILDING PAD ELEVATION FOR LOWEST OPENING INTO STRUCTURES

BLOCK	LOT NO.	ELEVATION (NAVD88)	
1	12, 13, 14, 15, 16, 17, 18, 19, 20, 21, 22, 23, 24, 25, 26, 27, 28, 29, 30, 31, 57, 58, 59	1328.5	
	2	1, 2, 3, 4, 5, 6, 7, 8, 9, 10, 11, 12, 32, 33, 34, 35, 36, 37, 38, 39, 40, 41, 42, 43, 44, 45, 46, 47, 48, 49, 50, 51, 52, 53	1328.5
			1328.0

**Curve Table**

Curve #	Length	Radius	Delta	Chord Direction	Chord Length
C1	26.52	19.00	79.97	N71° 21' 55"E	24.42
C2	29.85	19.00	90.00	N46° 12' 55"W	26.87
C3	29.85	19.00	90.00	S43° 47' 05"W	26.87
C4	26.52	19.00	79.97	S8° 36' 25"E	24.42
C5	27.63	19.00	83.32	N15° 08' 30"W	25.26
C6	96.81	200.00	27.74	S12° 39' 08"W	95.87
C7	22.61	216.00	6.00	S23° 31' 17"W	22.60
C8	20.03	216.00	5.31	S1° 26' 28"W	20.02
C9	56.76	200.00	16.26	S9° 20' 44"E	56.57
C10	56.76	200.00	16.26	N9° 20' 44"W	56.57
C11	56.92	316.00	10.32	N3° 56' 41"E	56.84
C12	3.87	300.00	0.74	N8° 44' 07"E	3.87
C13	21.96	40.00	31.45	N54° 25' 29"W	21.68
C14	26.28	19.00	79.25	S30° 31' 21"E	24.24
C15	9.68	332.00	1.67	N8° 16' 11"E	9.68
C16	50.12	332.00	8.65	N3° 06' 34"E	50.07
C17	50.16	300.00	9.58	N3° 34' 30"E	50.11
C18	52.52	216.00	13.93	N8° 10' 50"W	52.39
C19	8.78	216.00	2.33	N16° 18' 38"W	8.78
C20	20.04	184.00	6.24	S1° 54' 17"W	20.03
C21	27.63	19.00	83.32	S68° 10' 52"W	25.26
C22	29.85	19.00	90.00	N46° 12' 55"W	26.87
C23	13.66	216.00	3.62	S3° 01' 38"E	13.66
C24	56.76	200.00	16.26	S9° 20' 44"E	56.57
C25	13.59	184.00	4.23	N15° 21' 37"W	13.58
C26	56.76	200.00	16.26	N9° 20' 44"W	56.57
C27	38.63	184.00	12.03	N7° 13' 49"W	38.56
C28	56.74	316.00	10.29	N3° 55' 44"E	56.67
C29	27.11	40.00	38.83	N50° 45' 55"W	26.59
C30	26.28	19.00	79.25	S30° 33' 15"E	24.24
C31	5.80	332.00	1.00	N8° 34' 22"E	5.80
C32	38.55	216.00	10.23	N6° 19' 43"W	38.50
C33	13.66	184.00	4.25	S3° 20' 34"E	13.66
C34	29.85	19.00	90.00	S43° 47' 05"W	26.87
C35	85.33	150.00	32.59	N74° 55' 05"W	84.19
C36	150.29	150.00	57.41	N29° 55' 05"W	144.08
C37	84.04	118.00	40.81	N19° 11' 15"E	82.27
C38	64.68	118.00	31.41	N55° 17' 38"E	63.88
C39	103.22	150.00	39.43	S51° 16' 59"W	101.20
C40	85.60	150.00	32.70	S15° 13' 13"W	84.44
C41	90.65	158.42	32.78	N74° 49' 23"W	89.41
C42	29.85	19.00	90.00	S46° 12' 55"E	26.87

**Curve Table**

Curve #	Length	Radius	Delta	Chord Direction	Chord Length
C43	29.85	19.00	90.00	S43° 47' 05"W	26.87
C44	52.54	150.00	20.07	N60° 57' 50"E	52.27
C45	13.66	150.00	5.22	N48° 19' 19"E	13.65
C46	68.96	96.82	40.81	S70° 48' 45"E	67.51
C47	24.30	112.82	12.34	S85° 02' 38"E	24.26
C48	29.85	19.00	90.00	N46° 12' 55"W	26.87
C49	29.85	19.00	90.00	N43° 47' 05"E	26.87
C50	29.85	19.00	90.00	S43° 47' 05"W	26.87
C51	29.85	19.00	90.00	N46° 12' 55"W	26.87
C52	29.85	19.00	90.00	N43° 47' 05"E	26.87
C53	29.85	19.00	90.00	S46° 12' 55"E	26.87
C54	29.85	19.00	90.00	S43° 47' 05"W	26.87
C55	29.85	19.00	90.00	N46° 12' 55"W	26.87
C56	29.85	19.00	90.00	N43° 47' 05"E	26.87
C57	29.70	19.00	89.55	S46° 26' 28"E	26.76
C58	53.15	93.43	32.59	N15° 04' 55"E	52.44
C59	45.91	216.00	12.18	S82° 41' 46"W	45.82
C60	3.78	184.00	1.18	N77° 11' 45"E	3.78
C61	35.38	184.00	11.00	N83° 17' 04"E	35.27
C62	60.46	284.00	12.20	S85° 07' 01"E	60.34
C63	1.02	284.00	0.20	S78° 54' 59"E	1.02
C64	59.54	316.00	10.80	N84° 12' 42"W	59.45
C65	8.86	316.00	1.61	S89° 35' 16"W	8.86
C66	26.06	316.00	4.73	S86° 25' 19"W	26.06
C67	18.66	316.00	3.38	S82° 22' 01"W	18.66
C68	26.04	184.00	8.11	N84° 43' 47"E	26.02
C69	30.57	216.00	8.11	N84° 43' 47"E	30.55
C70	3.32	284.00	0.67	S81° 00' 37"W	3.32
C71	36.87	284.00	7.44	S85° 03' 55"W	36.85
C72	58.53	284.00	11.81	N85° 18' 39"W	58.43
C73	2.94	284.00	0.59	N79° 06' 36"W	2.94
C74	57.66	316.00	10.45	N83° 02' 28"E	57.58
C75	10.74	316.00	1.95	N89° 45' 29"E	10.74
C76	24.43	216.00	6.48	N85° 32' 42"E	24.41
C77	21.48	216.00	5.70	N79° 27' 23"E	21.47
C78	39.11	184.00	12.18	S82° 41' 46"W	39.03
C79	42.51	200.00	12.18	S82° 41' 46"W	42.43
C80	42.51	200.00	12.18	S82° 41' 46"E	42.43
C81	64.93	300.00	12.40	N85° 00' 53"E	64.81
C82	64.93	300.00	12.40	N85° 00' 53"W	64.81
C83	42.46	300.00	8.11	S84° 43' 47"W	42.43
C84	28.31	200.00	8.11	N84° 43' 47"E	28.28

**Parcel Line Table**

Line #	Length	Direction
L2'	125.00	N1° 12' 55.34"W
L3'	55.35	S26° 31' 10.95"W
L4	6.40	S26° 31' 10.95"W
L5'	100.00	S1° 12' 55.34"E
L6	18.00	N1° 12' 55.34"W
L7	158.07	N1° 12' 55.34"W
L8	10.07	N1° 12' 55.34"W
L9'	74.57	N9° 06' 18.01"E
L10	17.46	N9° 06' 18.01"E
L11'	20.62	S1° 12' 55.34"E
L13	16.60	S9° 06' 18.01"W
L14	10.07	S1° 12' 55.34"E
L15	18.00	S1° 12' 55.34"E
L16	6.40	S26° 31' 10.95"W
L17'	213.35	N1° 12' 55.34"W
L18'	74.75	N9° 04' 23.52"E
L19	13.15	N9° 04' 23.52"E

**Parcel Line Table**

Line #	Length	Direction
L21	16.16	N9° 04' 23.52"E
L22	6.42	S1° 12' 55.34"E
L23	7.15	S1° 12' 55.34"E
L24	17.29	N1° 12' 55.34"W
L25	19.00	N1° 12' 55.34"W
L26'	31.30	N58° 25' 51.47"W
L28	5.76	N88° 47' 04.66"E
L29	22.79	S1° 12' 55.34"E
L30'	32.00	S88° 47' 04.66"W
L31'	32.00	S88° 47' 04.66"W
L32	27.21	S1° 12' 55.34"E
L34	11.33	S1° 07' 42.07"E
L35'	11.33	S1° 07' 42.07"E
L36	11.33	S1° 07' 42.07"E
L37'	31.14	S50° 24' 34.82"E
L38	25.00	N1° 12' 55.34"W
L39	32.00	N88° 47' 04.66"E

**Parcel Line Table**

Line #	Length	Direction
L40	32.00	N88° 47' 04.66"E
L41	25.00	N1° 12' 55.34"W
L42'	121.88	N88° 47' 04.66"E
L43	10.00	N1° 12' 55.34"W
L44	25.00	S1° 12' 55.34"E
L45	32.00	N88° 47' 04.66"E
L46	25.00	S1° 12' 55.34"E
L47	25.00	S1° 12' 55.34"E
L48	32.00	N88° 47' 04.66"E
L49	32.00	N88° 47' 04.66"E
L50	25.00	S1° 12' 55.34"E
L51'	47.93	N31° 22' 45.06"E
L52	35.91	N1° 12' 55.34"W
L53'	116.91	N1° 12' 55.34"W
L54	25.00	S88° 47' 04.66"W
L55	32.00	N1° 12' 55.34"W
L56	32.00	N1° 12' 55.34"W

**Parcel Line Table**

Line #	Length	Direction
L57	25.00	S88° 47' 04.66"W
L58	35.91	N1° 12' 55.34"W
L59	20.00	N88° 47' 04.66"E
L60	17.37	N88° 47' 04.66"E
L61	23.23	S88° 47' 04.66"W
L62	1.77	S88° 47' 04.66"W
L63	24.89	S88° 47' 04.66"W
L64	24.89	S88° 47' 04.66"W
L65	25.00	S88° 47' 04.66"W
L66'	16.49	N88° 47' 04.66"E
L67'	24.89	S88° 47' 04.66"W
L68'	25.00	S88° 47' 04.66"W

