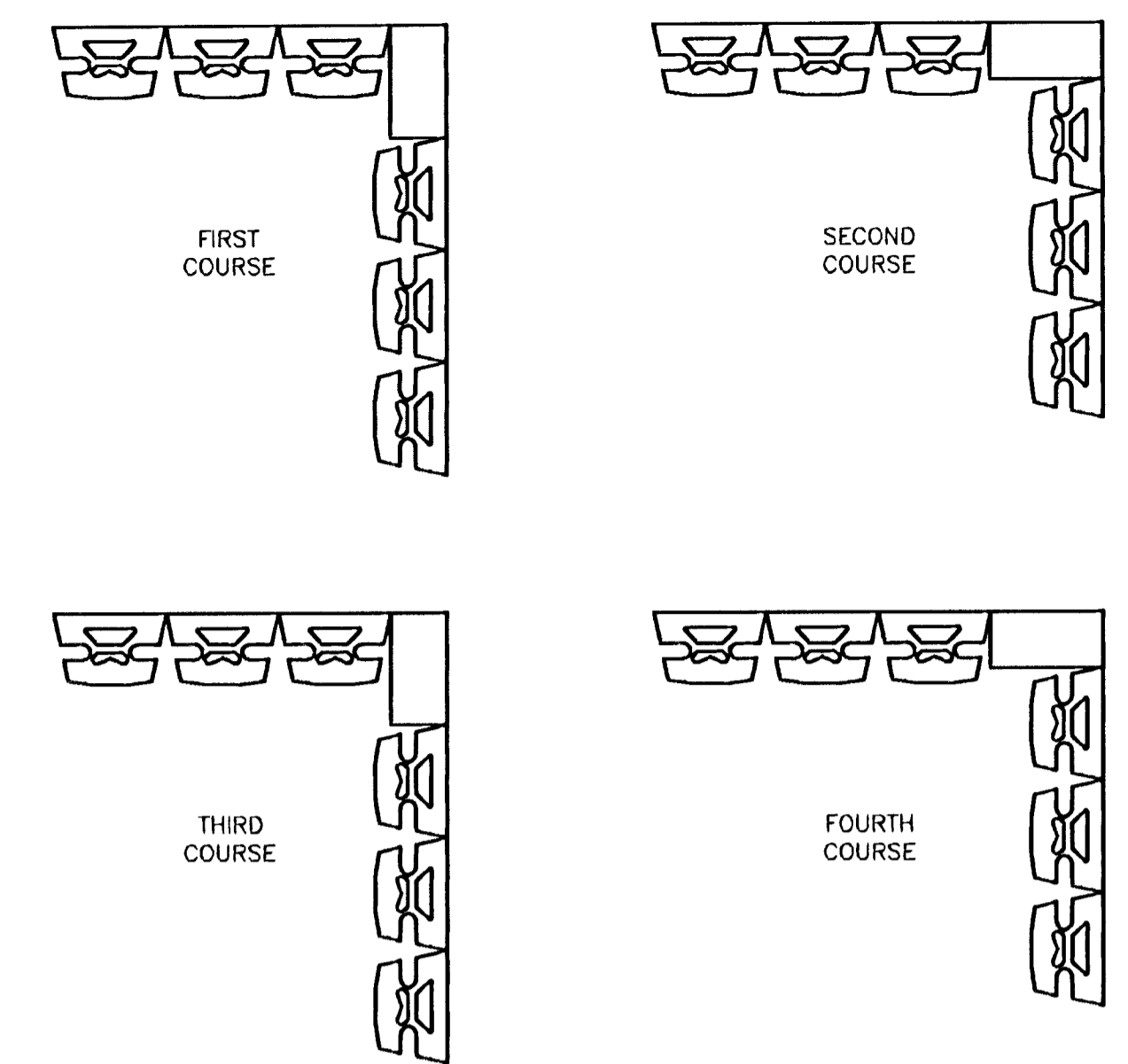


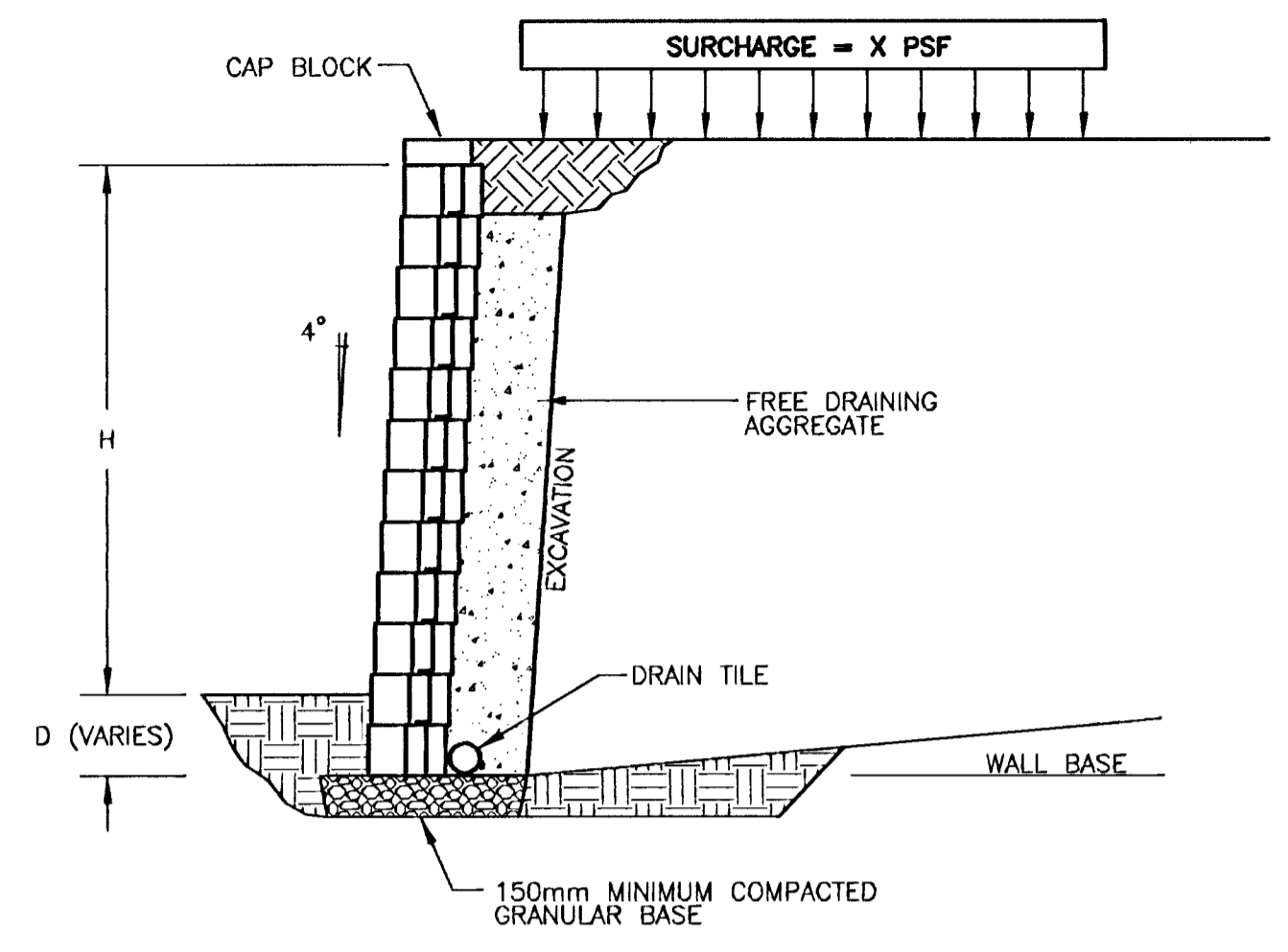
FHWA REGION NO.	STATE	PROJECT NUMBER	FISCAL YEAR	SHEET NUMBER	TOTAL SHEETS
7	KANSAS	87N-0195-01	2001	47	127

BY	DATE
REFERENCES NOTED	CHECKED

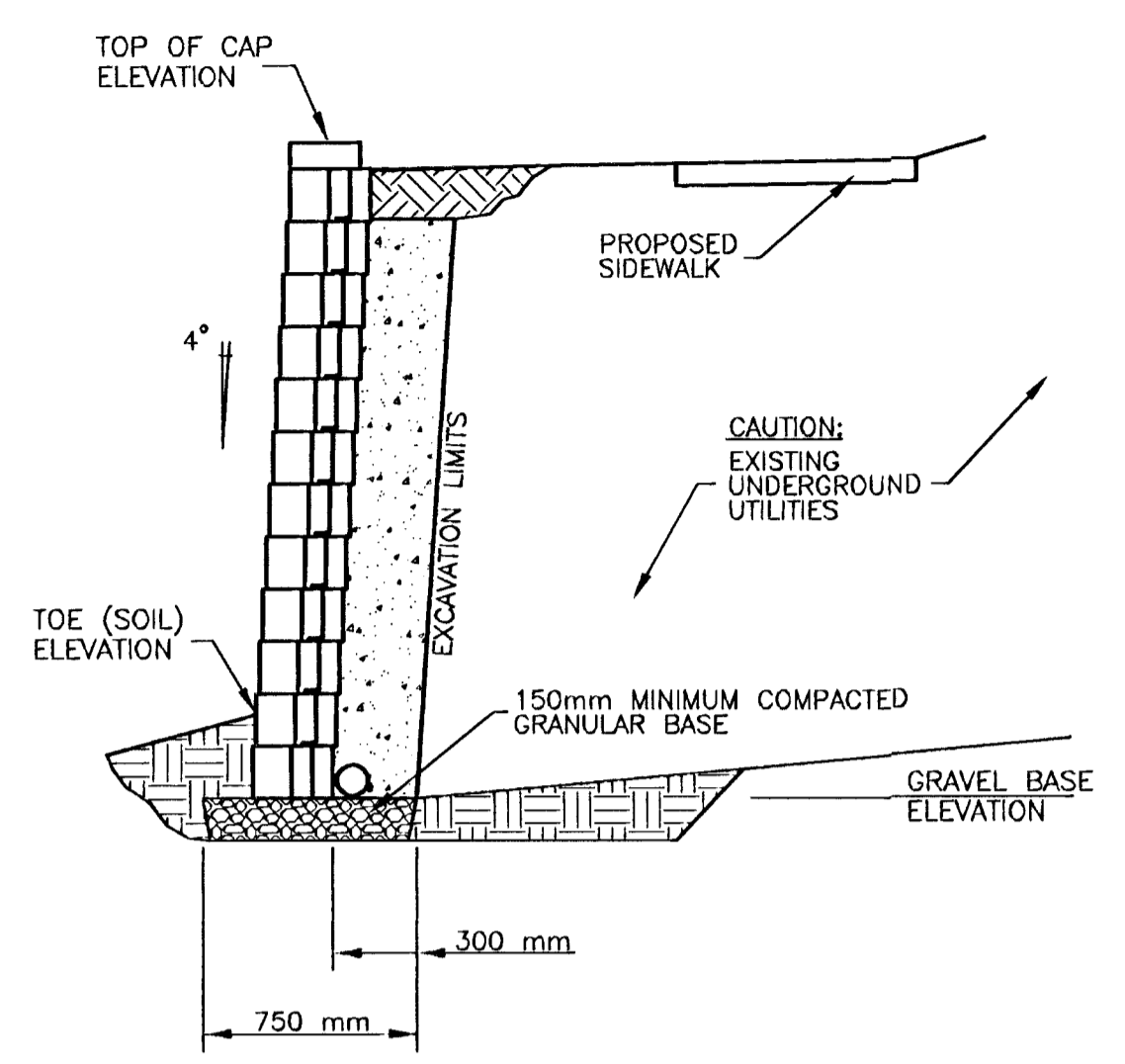


ANCHOR VERTICA/VERTICA PRO CORNER UNIT

ANCHOR VERTICA - STRAIGHT UNITS
TYPICAL 90° OUTSIDE CORNERS



ANCHOR VERTICA - SURCHARGE BEHIND WALL



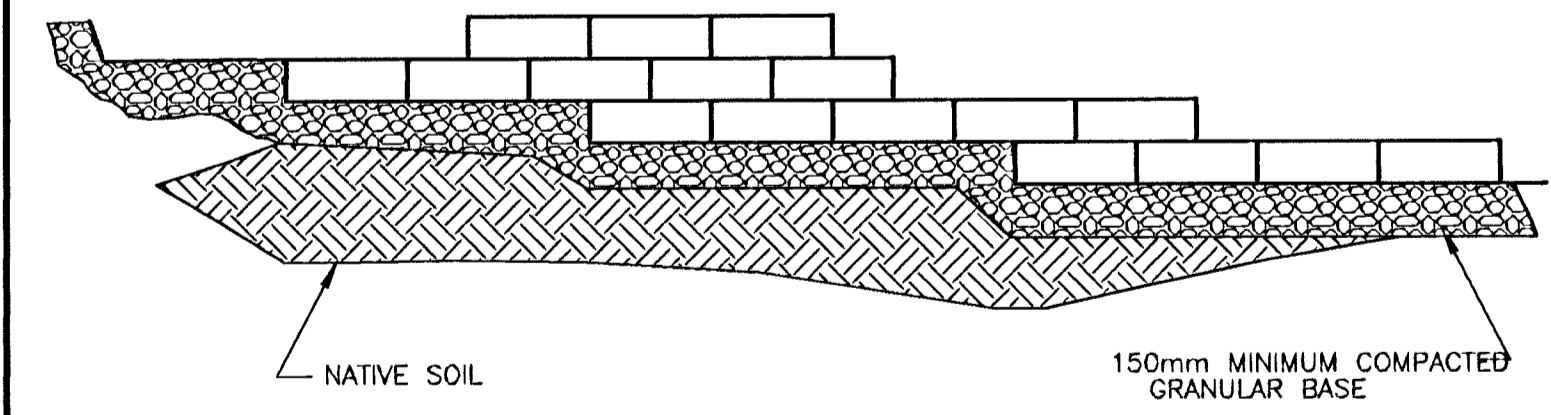
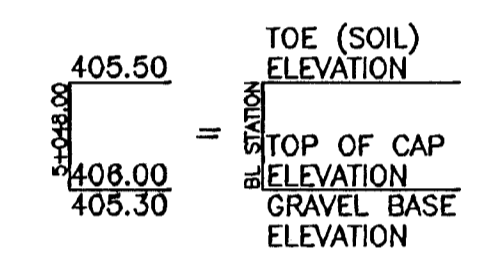
ANCHOR VERTICA - DIMENSIONS

RETAINING WALL LOCATION SCHEDULE

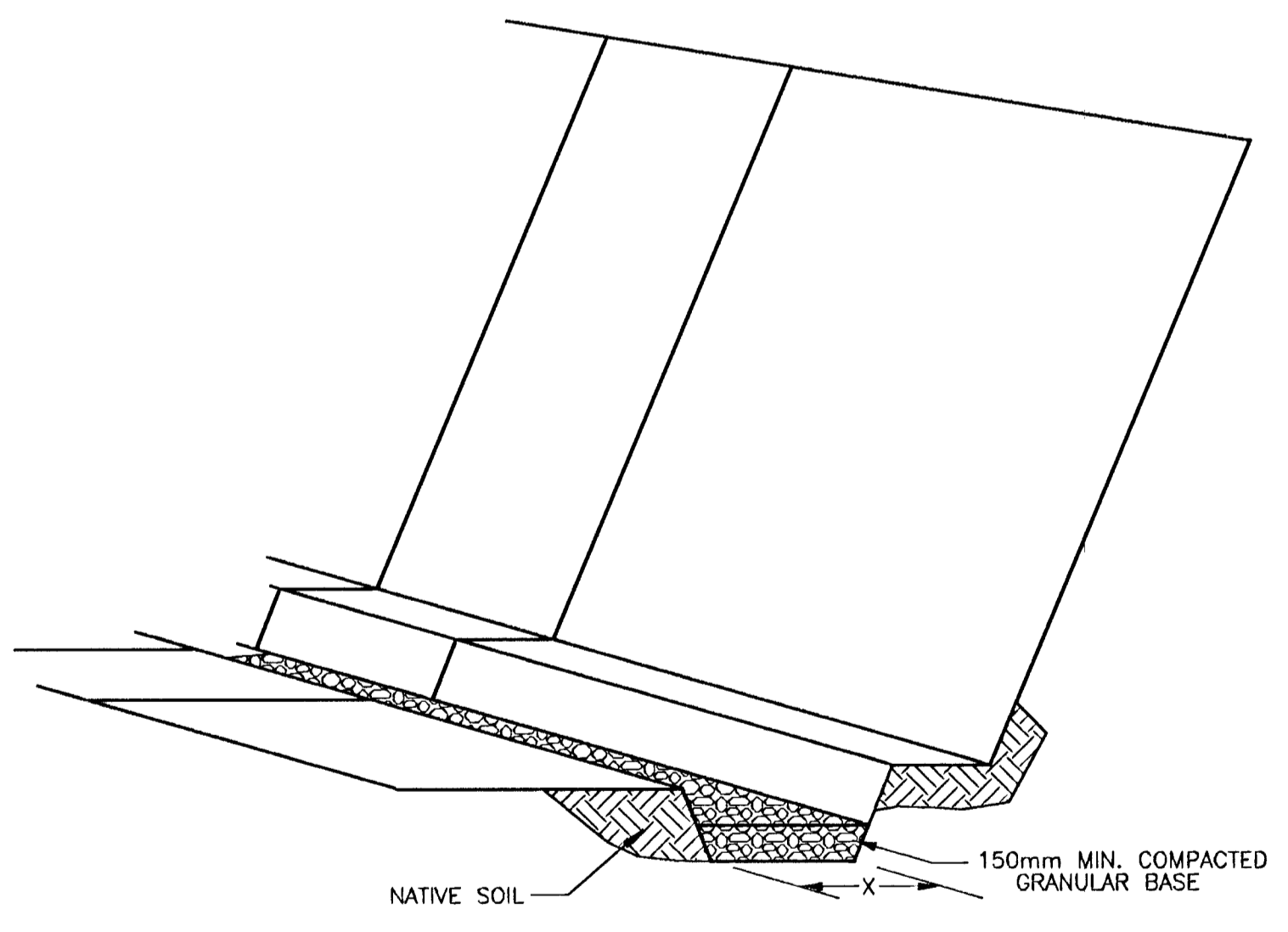
BEGIN	P.I.	END
STA. 8+364.529, 22 312 LT.	STA. 8+389.529, 22 313 LT.	STA. 8+389.442, 47 313 LT.
STA. 8+384.529, 22 407 RT.	STA. 8+389.529, 22 407 RT.	STA. 8+389.538, 27 407 RT.

LOCATIONS ARE MAPLE BASELINE STATIONS AND OFFSETS TO FACE OF RETAINING WALL.

ANCHOR WALL FINISHED GRADES DETAIL

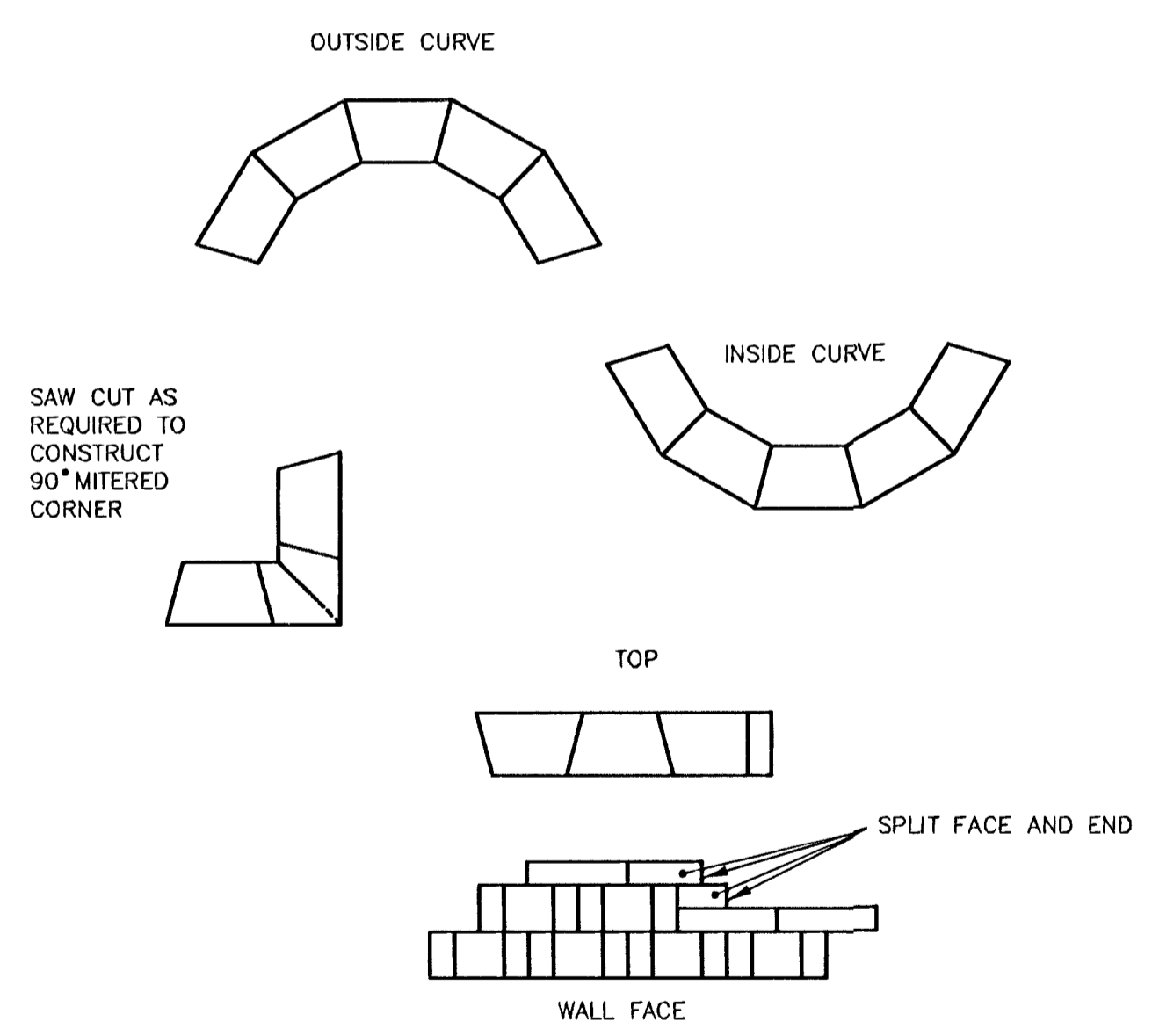


TYPICAL STEP-UP DETAIL
(ALL PRODUCTS)



NOTE: X IS DEPENDENT ON ANCHOR PRODUCT USED.

TYPICAL BASE PREPARATION
(ALL PRODUCTS)



- NOTES:
1. USE ADHESIVE TO SECURE CAPS IN PLACE
 2. ALTERNATE SHORT AND LONG CAP FACES EVERY OTHER CAP TO ACHIEVE A STRAIGHT WALL
 3. VARIOUS COMBINATIONS OF LONG AND SHORT CAP FACES WILL BE NECESSARY FOR RADII GREATER THAN THE MINIMUM
 4. CUT CAPS TO FIT
 5. ALWAYS START CAPPING WALL FROM LOWEST ELEVATION

ANCHOR VERTICA/VERTICA PRO
DESIGN DETAILS - CAP BLOCK

ANCHOR WALL DESIGN DETAILS

STRUCTURE SUMMARY	
WALL TYPE:	GRAVITY STRUCTURE
ANCHOR WALL UNIT TYPE:	ANCHOR VERTICA (8 in)
CAP UNIT:	YES
REINFORCEMENT:	NONE
DESIGN SUMMARY	
DESIGN METHOD:	NCMA
SOIL DATA	
RETAINED SOIL:	BROWN SILT LOAM
LEVELING PAD SOIL:	GRAVEL
FOUNDATION SOIL:	BROWN SILTY CLAY LOAM
ANCHOR WALL UNITS	
STANDARD UNITS	
UNIT HEIGHT (mm):	203
UNIT WIDTH (mm):	292
UNIT LENGTH (mm):	457.2
SETBACK (mm):	14.27
WEIGHT (infield) (kg):	56.7
UNIT WEIGHT (infield) (kN/m ³):	20.5
CENTER OF GRAVITY (mm):	146.1
CAP UNITS	
UNIT HEIGHT (mm):	102
UNIT WIDTH (mm):	254
UNIT LENGTH (mm):	371.6
SETBACK (mm):	NONE
WEIGHT (infield) (kg):	19.1
UNIT WEIGHT (infield) (kN/m ³):	19.48
CENTER OF GRAVITY (mm):	127

NOTE: SIMILAR TYPE SEGMENTAL RETAINING WALL BY ALTERNATE MANUFACTURERS MAY BE USED WITH THE PERMISSION OF THE ENGINEER. CONTRACTOR MUST SUBMIT DESIGN CRITERIA AND DETAILS TO THE ENGINEER FOR REVIEW AND APPROVAL PRIOR TO CONSTRUCTION.

MAPLE IMPROVEMENTS-135TH ST. W. TO 119TH ST. W.
SEGMENTAL RETAINING WALL

		224 NORTH MAIN WICHITA, KANSAS 67203 http://www.feld.com/~srb	316-284-8008 FAX: 284-4821 E-Mail: urb@feld.com	REVISED 47
SAVOY, RUGGLES & BOHM, P.A. ENGINEERING & SURVEYING				127
PROJECT NUMBER 472-78-245-83262-000-001	SHEET 121/127	DATE Sept. 27, 2001	UTILITY -	SHEET JOB 121/127