

FHWA REGION NO.	STATE	PROJECT NUMBER	FISCAL YEAR	SHEET NUMBER	TOTAL SHEETS
7	KANSAS	87N-0195-01	2001	55	127

BY	DATE
REFERENCES NOTED	REFERENCES CHECKED

STA. 0+032.915 LINE 8
BL STA. 9+317.632, 10 379 LT. =
STA. 0+028.940 LINE 8A
CONST. TYPE IA INLET
(L=3 400 W=1 300)
TOP ELEV. = 402.477

INSTALL 1.7 S.M. LIGHT STONE RIP-RAP

STA. 0+041.151 LINE 8
BL STA. 9+317.095, 18 594 LT.
END OF 600mm END SECTION.

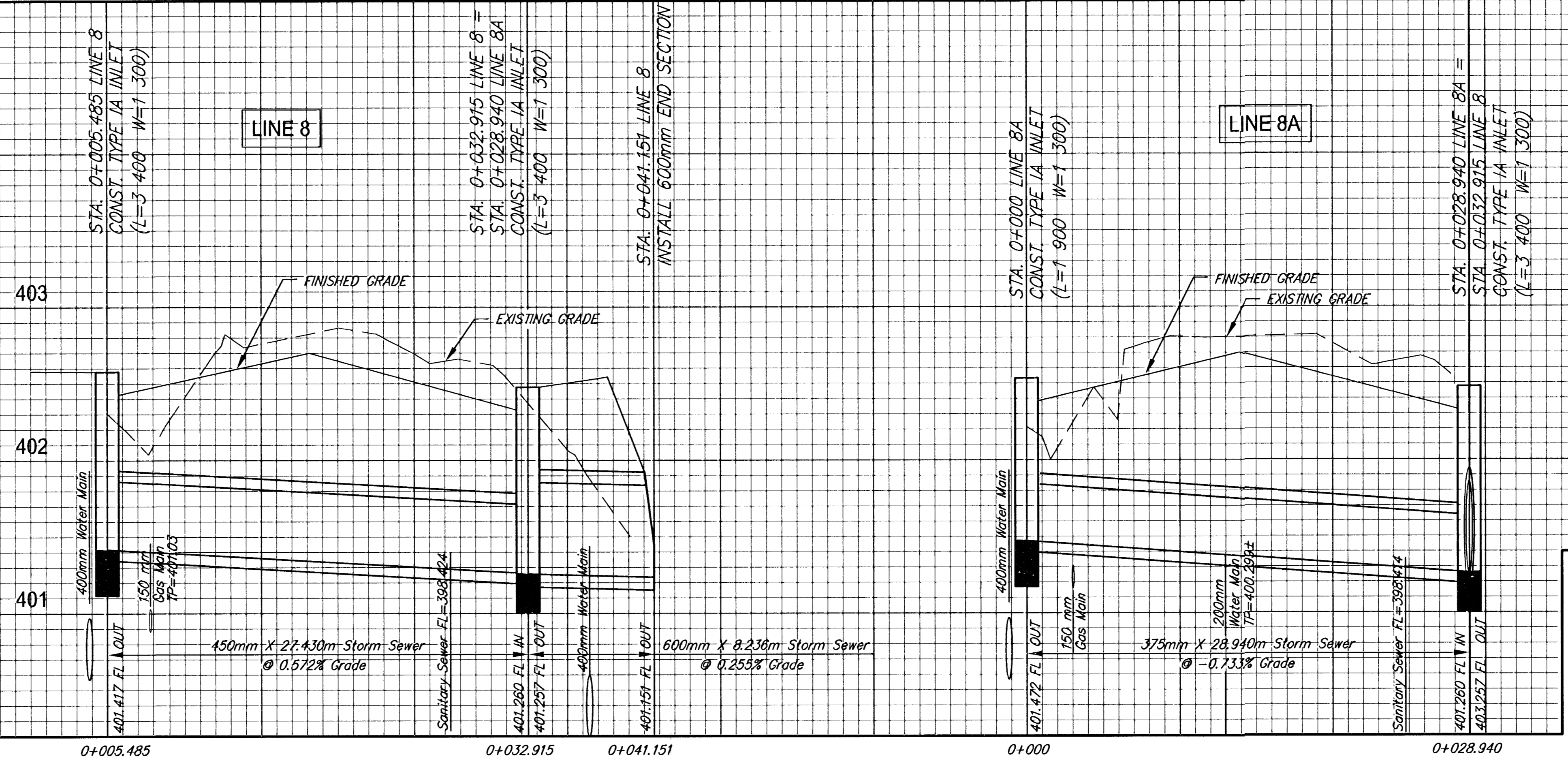
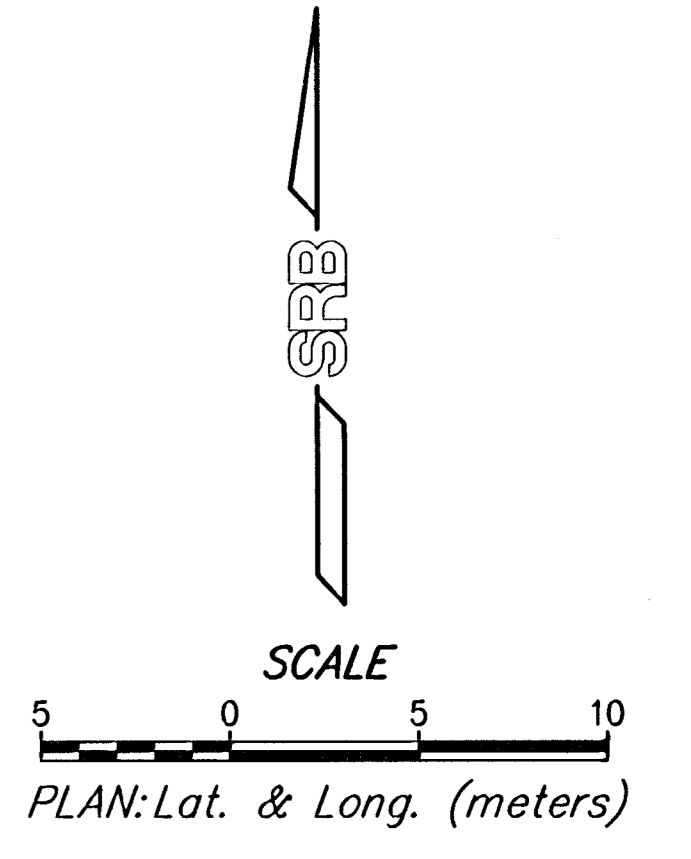
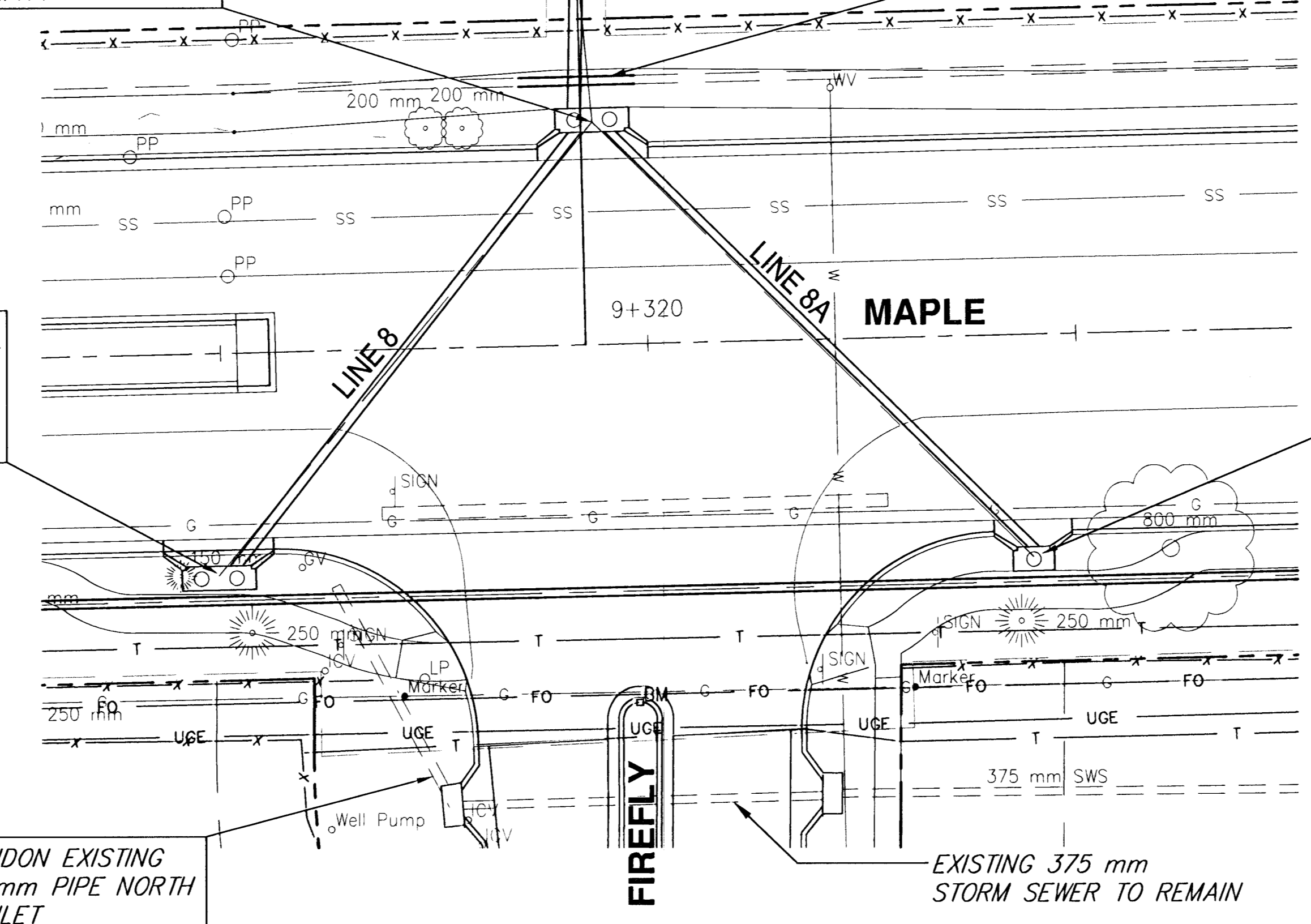
400mm WATER MAIN

STA. 0+005.485 LINE 8
BL STA. 9+299.701, 10 379 RT.
CONST. TYPE IA INLET
(L=3 400 W=1 300)
TOP ELEV. = 402.578

STA. 0+000 LINE 8A
BL STA. 9+337.798, 10 379 RT.
CONST. TYPE IA INLET
(L=1 900 W=1 300)
TOP ELEV. = 402.534

ABANDON EXISTING 375 mm PIPE NORTH OF INLET

EXISTING 375 mm STORM SEWER TO REMAIN



**MAPLE - 135TH TO 119TH STREET WEST
STORM WATER SEWER LINES 8 & 8A**

SRB 324 NORTH MAIN WICHITA KANSAS 67203 www.srb.com

SAVOY, RUGGLES & BOHM, P.A.
ENGINEERING & SURVEYING

PROJECT NUMBER: 472-76-245-83262-000-000-001

DATE: Sept. 24, 2001

DESIGN: JDS

REVISION: 1217T

55

127