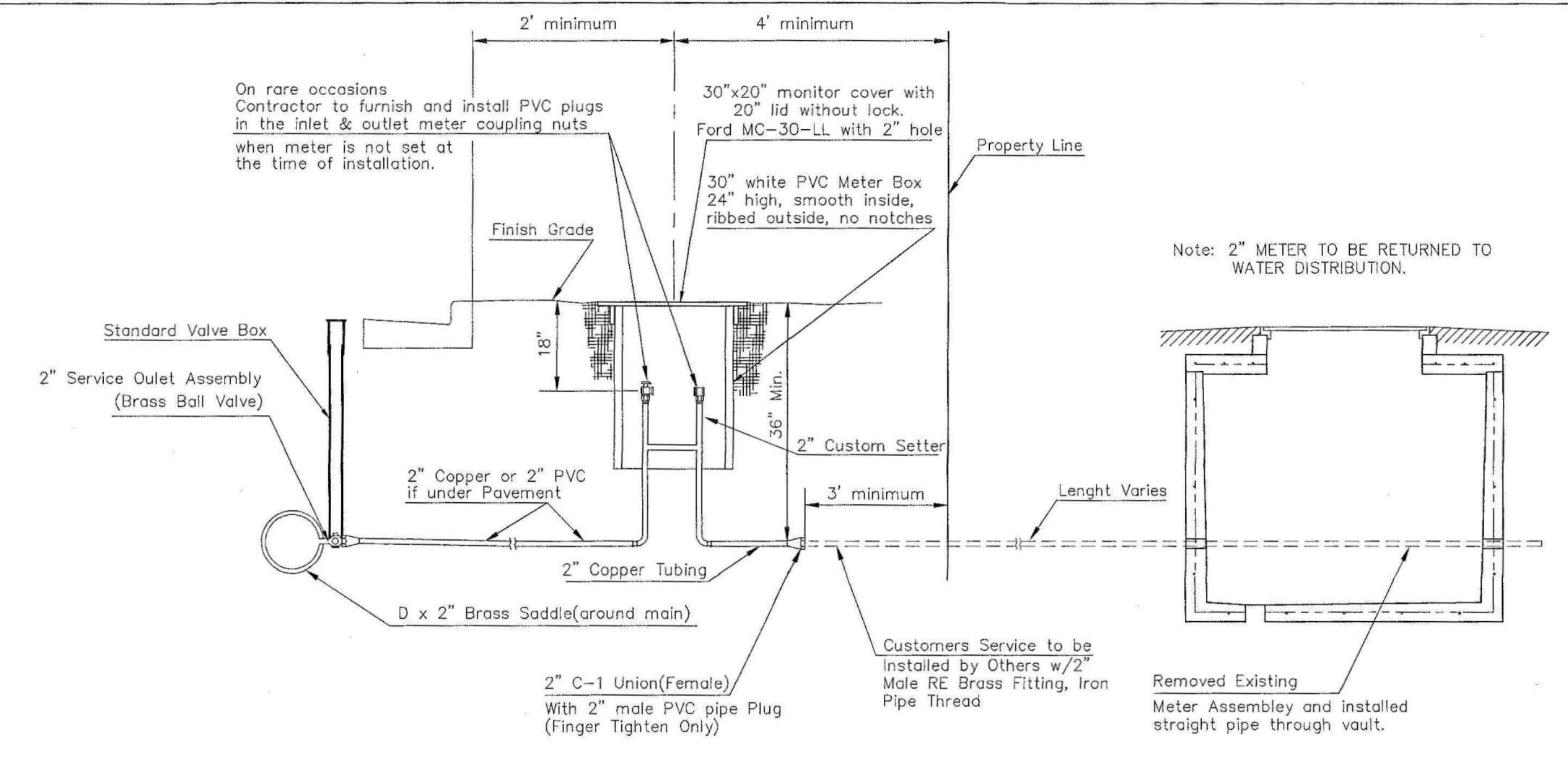


NOT TRAFFIC RATED RING & LID FOR 1" METER BOX



TYPICAL 2" METER SETTING

TYPICAL 2" METER SETTING INVOLVING EXISTING 2" METER VAULT

Note: ONE VALVE STEM EXTENSION FOR EACH VALVE BURIED GREATER THAN 5'.

Note: ONE VALVE STEM EXTENSION FOR EACH VALVE BURIED GREATER THAN 5'.

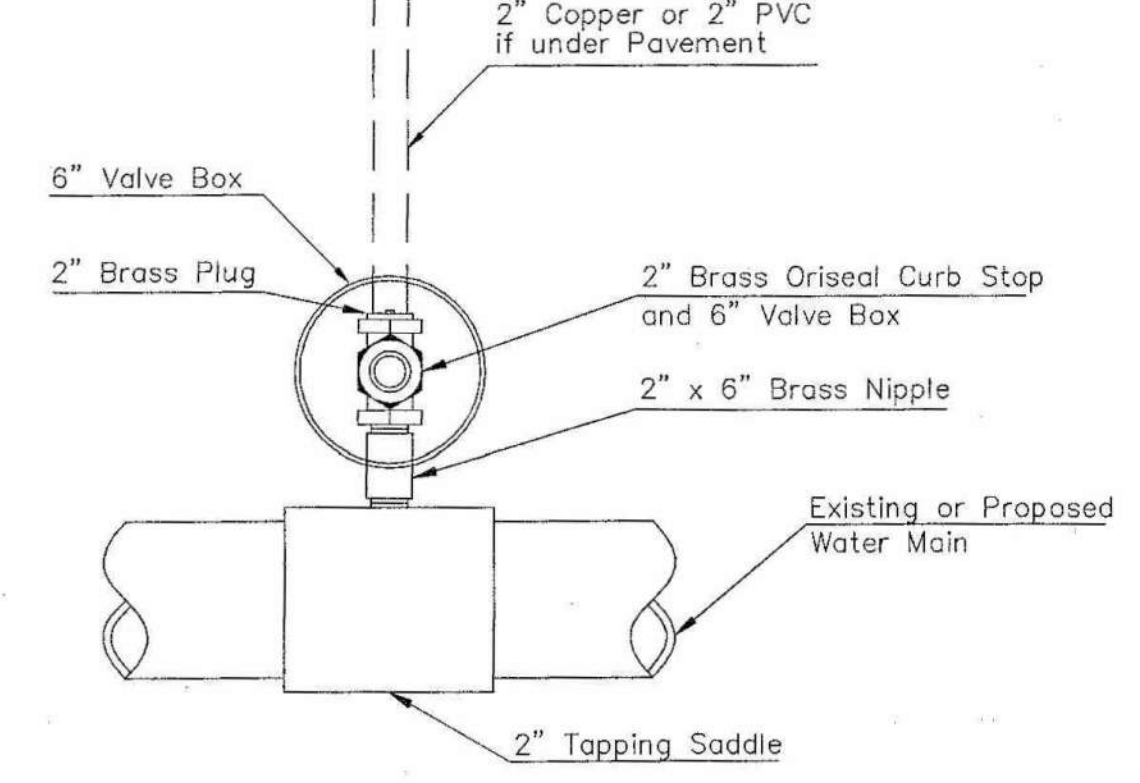
TYPICAL 1" METER SETTING

WATER METER TABLE				
SERVICE LINE NO.	WATERLINE NO. 1 STATION	SERVICE ADDRESS	PROPOSED METER LOCATION	APPROXIMATE 1" SERVICE LINE REQUIRED (FT.)
1	2+38	1556 NEW YORK	4.5' Lt.	6'
2	3+22	1550 NEW YORK	4.5' Lt.	6'
3	5+06	1510 NEW YORK	4.5' Lt.	6'
4	5+58	1508 NEW YORK	4.5' Lt.	6'
5	SEE KEY MAP	1601 NEW YORK	2.0' Lt.	2'

TOTAL SERVICES = 5  
APPROXIMATE 1" SERVICE LINE = 26'

NOTE: THE EXISTING WATER METERS SHALL BE RE-USED AND RESET UNLESS DAMAGED OR DETERMINED UNSUITABLE FOR USE BY THE CITY. THE CITY WILL PROVIDE THE REPLACEMENT WATER METER, IF REQUIRED. THE CONTRACTOR SHALL PROVIDE METER ADAPTORS AS NEEDED.

THE WATER SERVICES SHALL BE BID AS "WATER SERVICE COMPLETE REPLACEMENT" PER EACH.



Note: Where the 2" Service Outlet Assembly is to be used to connect a 2" main to another main, the 2" valve shall be a 2" IPT Gate Valve. 2" ball or globe valves shall not be approved for this use.

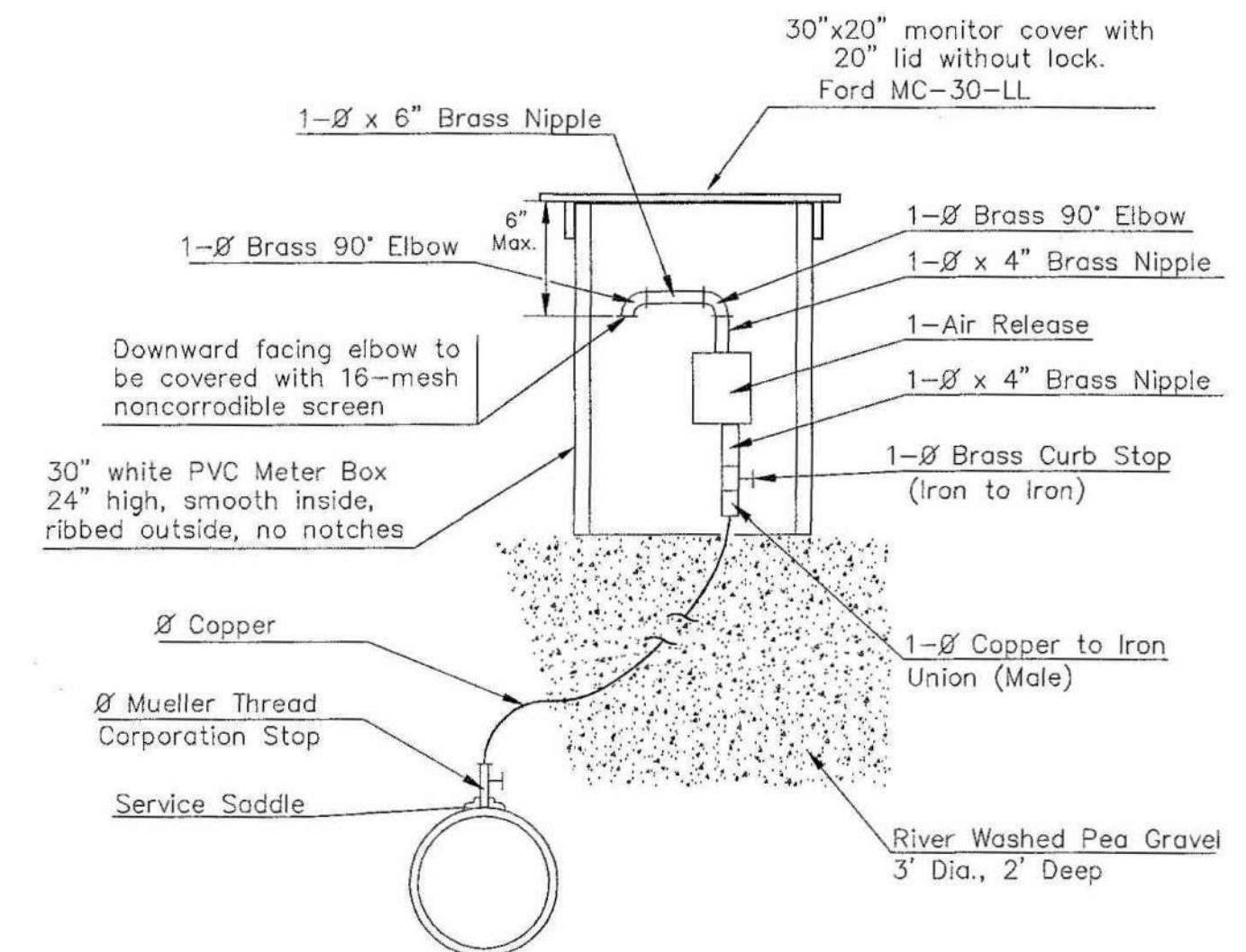
2" SERVICE OUTLET ASSEMBLY TOP VIEW

THE CONTRACTOR SHALL CONNECT NEW SERVICE TO EXISTING SERVICE LINE. "SHARK BITE" COUPLINGS WITH ADAPTORS AS REQUIRED. ALL COST FOR THE WORK SHALL BE INCLUDED IN THE UNIT PRICE BID ITEM "WATER SERVICE COMPLETE REPLACEMENT".

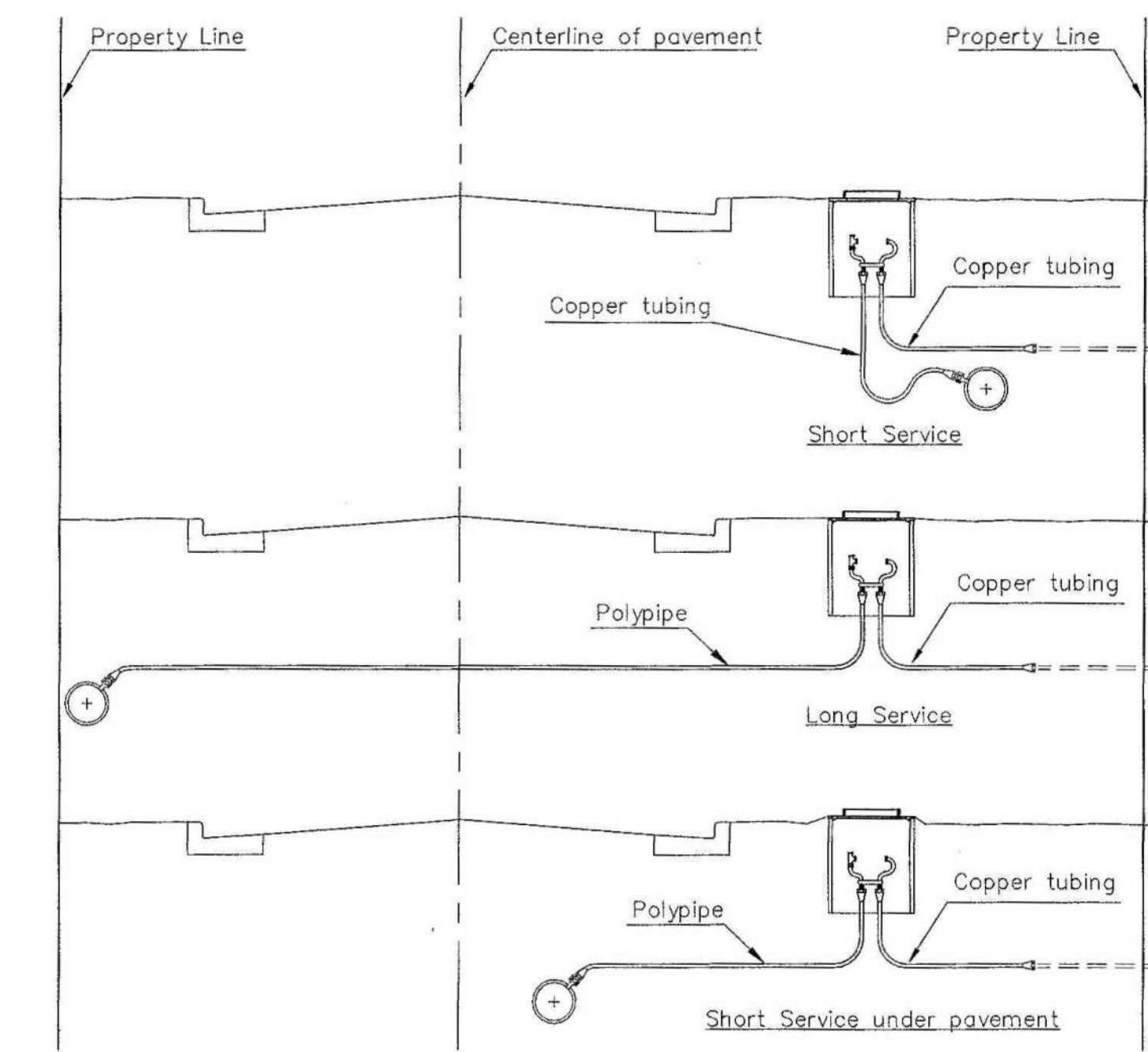
- 1 - Ø Mueller Thread Corporation Stop
- Ø Type "K" Copper Tubing
- 1 - Ø Copper to Iron Union (Male)
- 1 - Ø Brass Curb Stop (Iron to Iron)
- 2 - Øx4" Brass Nipple
- Air Release
- 2 - Ø Brass Elbows (90°)
- 1 - 1"x6" Brass Nipple
- 1 - 30" Monitor Cover
- 1 - 20" Meter Lid

NOTE:

THE 1 1/2" AIR RELEASE ASSEMBLY WILL TYPICALLY BE USED ON WATER MAINS 24" AND SMALLER, AS SPECIFICALLY DESIGNATED IN THE PLANS. COMBINATION AIR RELAEASE ASSEMBLIES WILL BE SPECIFICALLY DESIGNED FOR PROJECTS WITH LARGER MAINS, AND WILL BE INCLUDED IN THE PLANS.



MATERIALS FOR 1" or 2" AIR RELEASE ASSEMBLY Ø = 1" or 2"



SERVICE TYPES



STANDARD WATER SERVICE DETAIL

CITY ENGINEER  
**GARY JANZEN, P.E.**

PROJECT NUMBER 448-90827 OCA NUMBER 637105 DATE

CITY ENGINEER'S OFFICE  
CITY HALL - SEVENTH FLOOR  
455 NORTH MAIN STREET  
WICHITA, KANSAS 67202-1620  
(316) 268-4501

SHEET  
**W8 of 8**

Saved 11-01-2017 10:06:34 AM by CSL  
 Plot Scale 1:1 11-01-2017 3:14:28 PM  
 U:\Wichita-City\160312\160312\006-Standard Water Service Detail

REVISED: JANUARY 2015