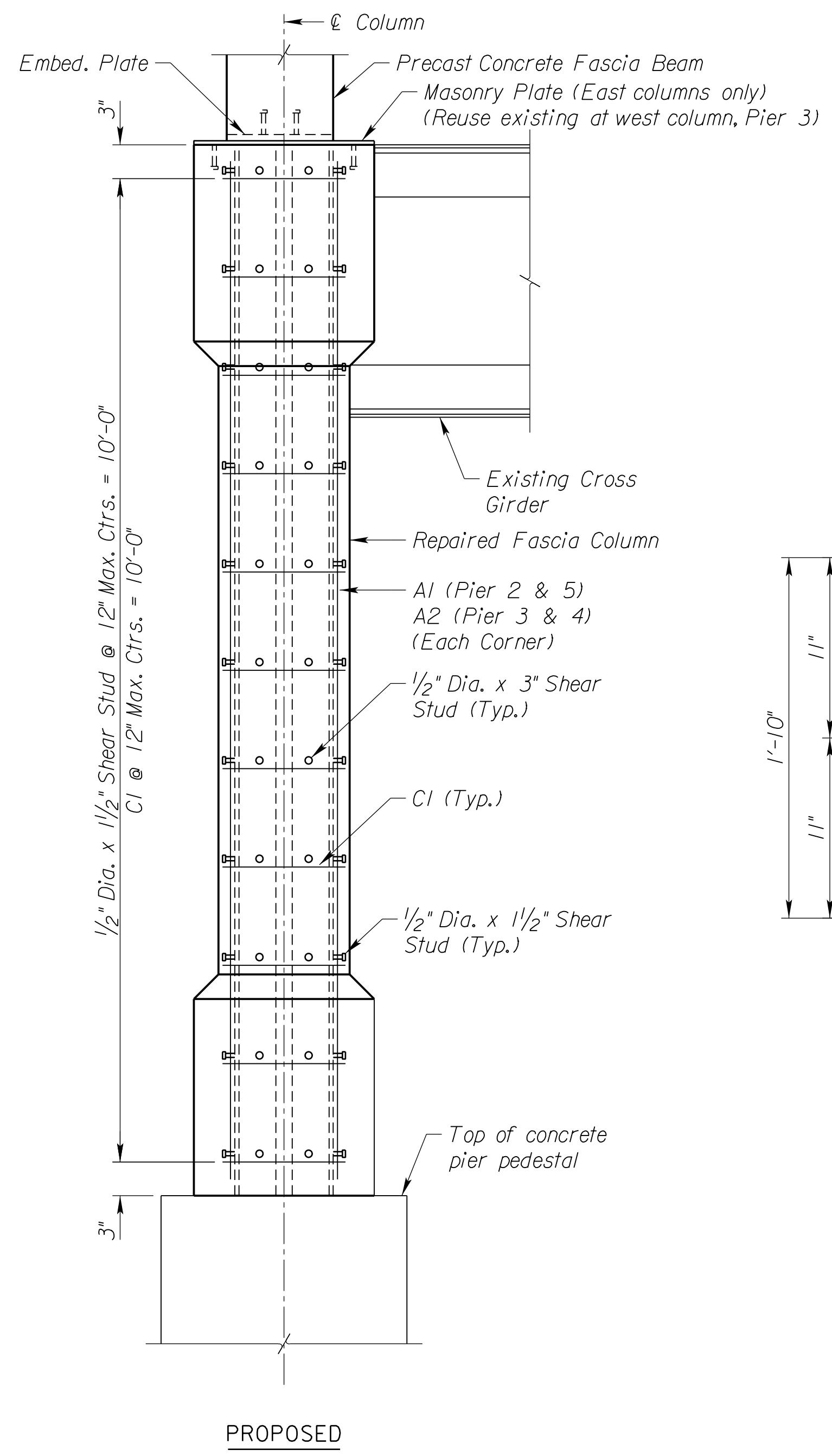


EXISTING

FASCIA COLUMN SIDE VIEW

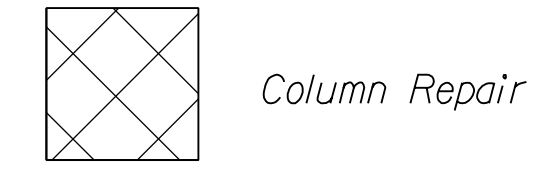


PROPOSED

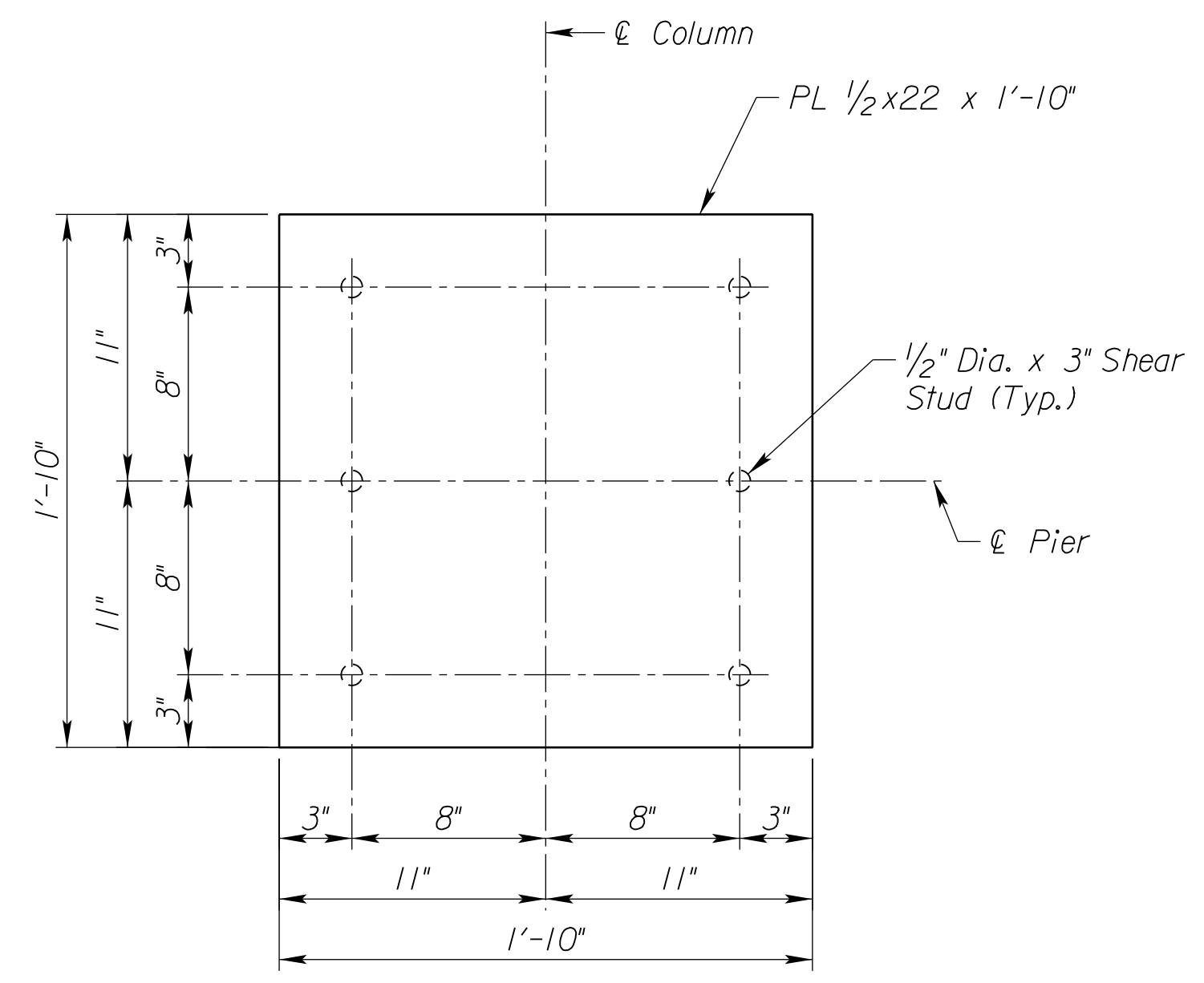
Note:
 Repair 4 Fascia columns at east side of bridge and 1 Fascia Column (Pier 3) at west side of bridge.
 Field verify dimensions.

BILL OF REINFORCING STEEL - SUBSTRUCTURE GRADE 60									
FASCIA CLMNS.	LOCATION	BAR LABEL	NO. REQUIRED	BEND	SIZE	TOTAL LENGTH	DIMENSIONS		
							a	b	c
		A1	8	A	4	10'-3"	10'-3"		
		A2	12	A	4	9'-9"	9'-9"		
		C1	55	C	4	5'-7"	1'-3"	1'-2"	4 1/2"

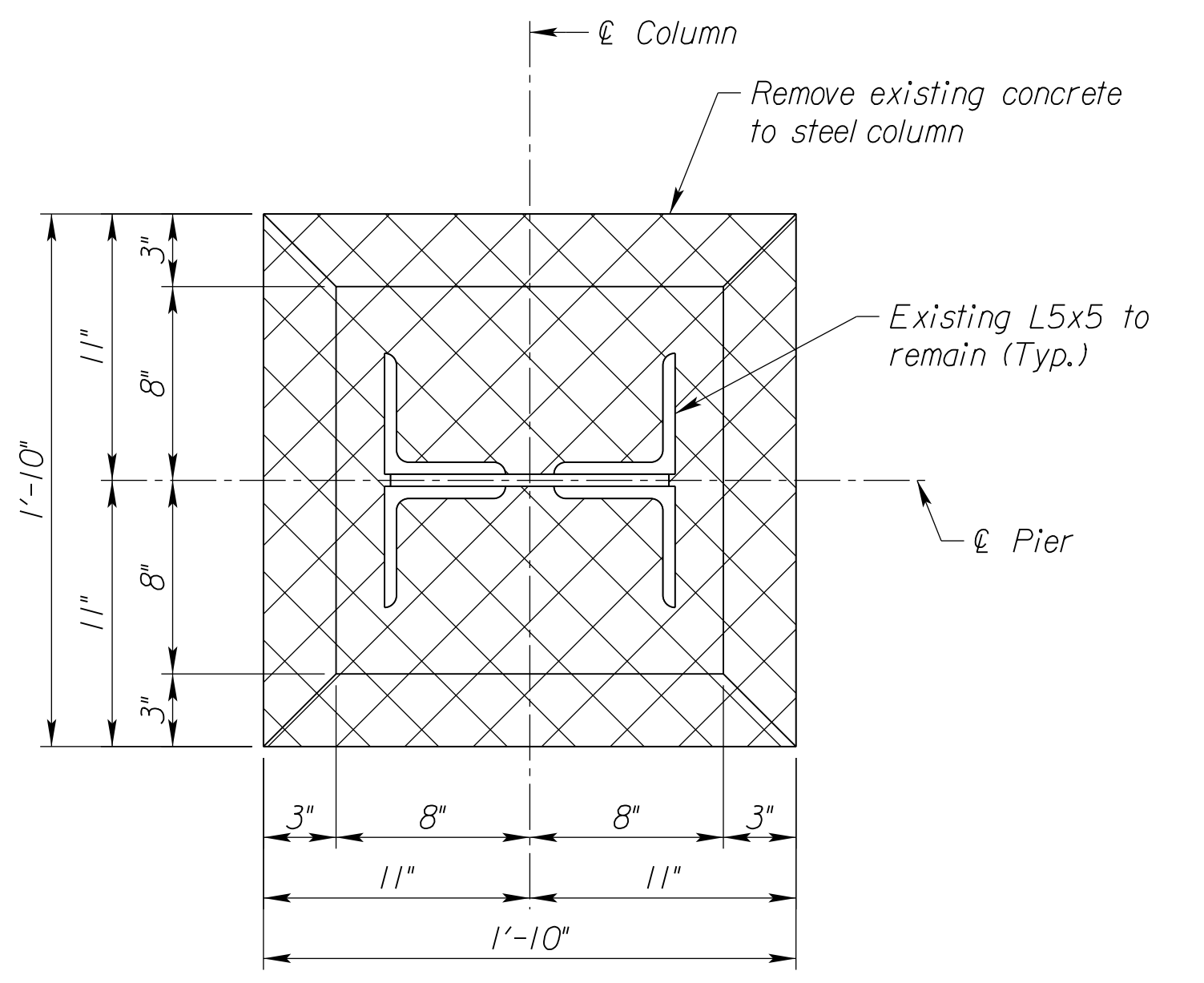
For Information Only



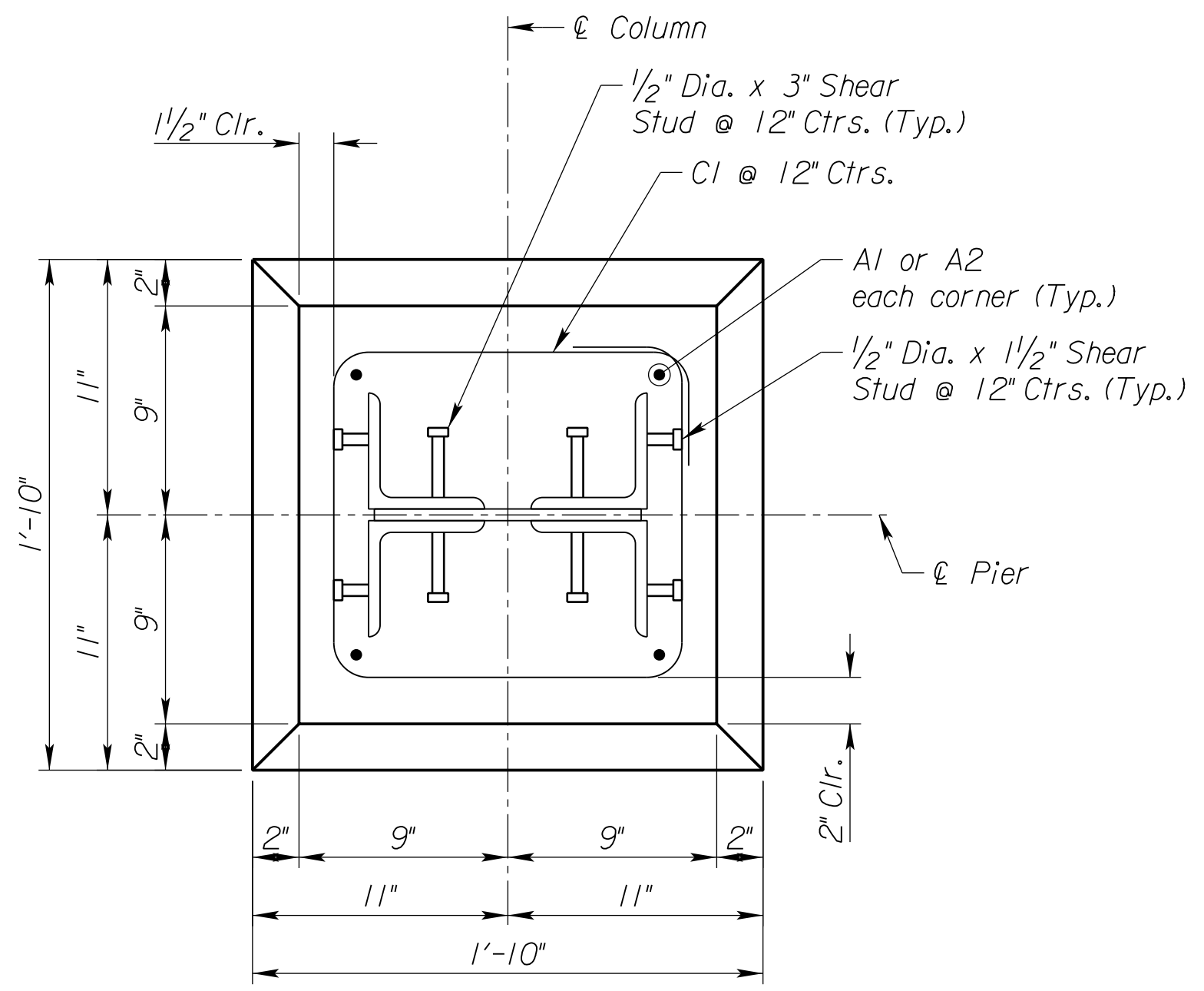
Column Repair



MASONRY PLATE DETAIL
 (ASTM A709 Gr. 50)
 (4 Required)

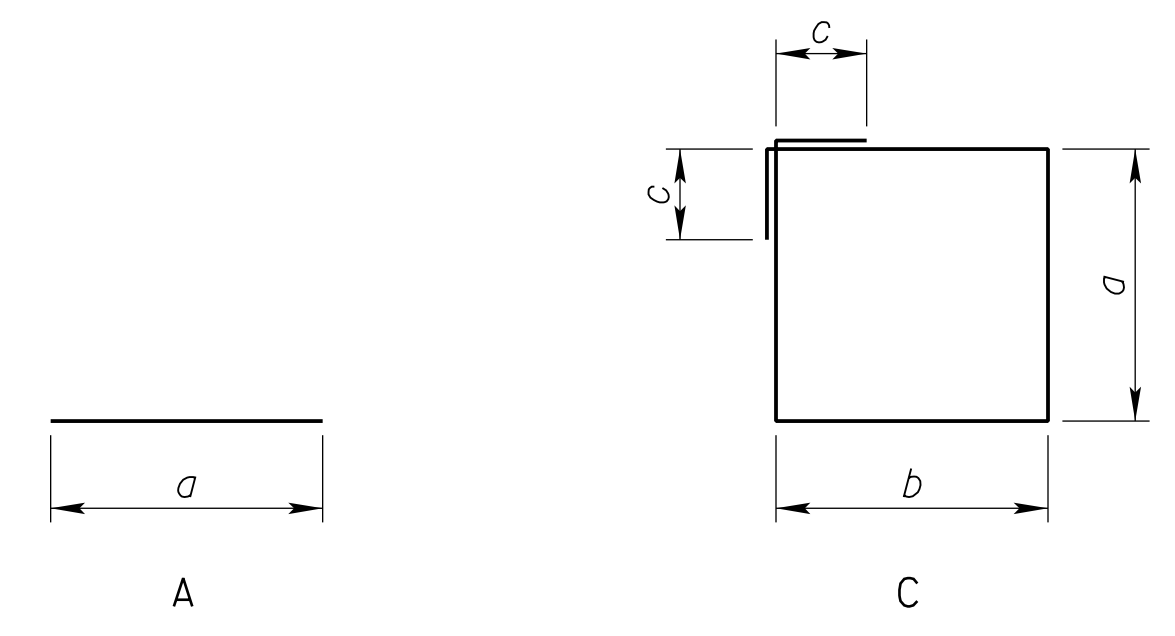


EXISTING



PROPOSED

FASCIA COLUMN SECTION



BENDING DIAGRAMS

Notes:
 "A" denotes bending mark. Dimensions are out to out unless noted otherwise.
 No allowance for bend curvature is to be made except for standard hook and radii in excess of the same.
 All materials and labor required to complete the concrete encasement, including removal and disposal of old concrete, rebar, shear studs and other incidentals shall be included in the price for bid item "Concrete Column Repair".

