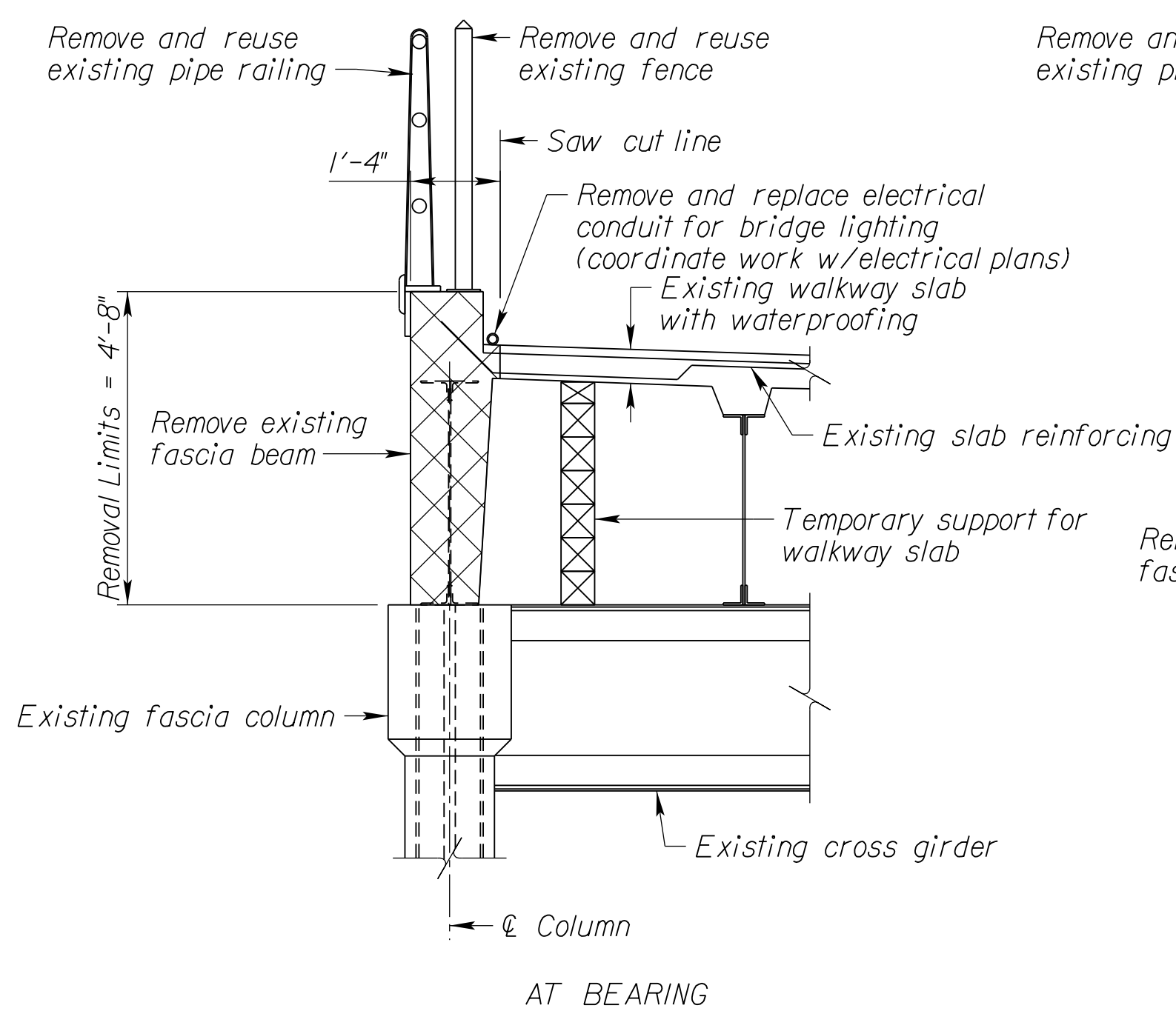
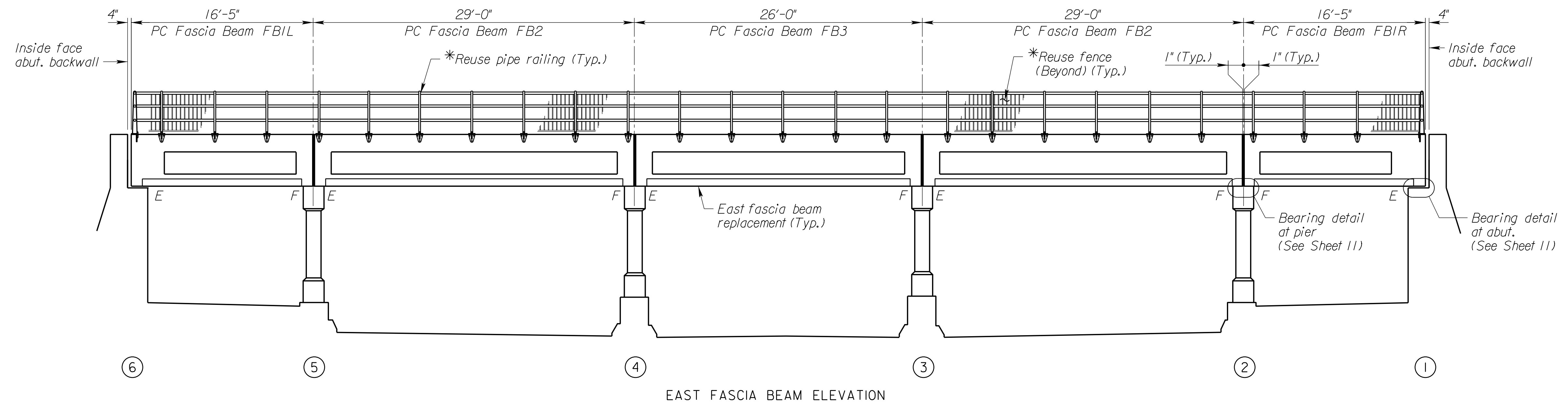
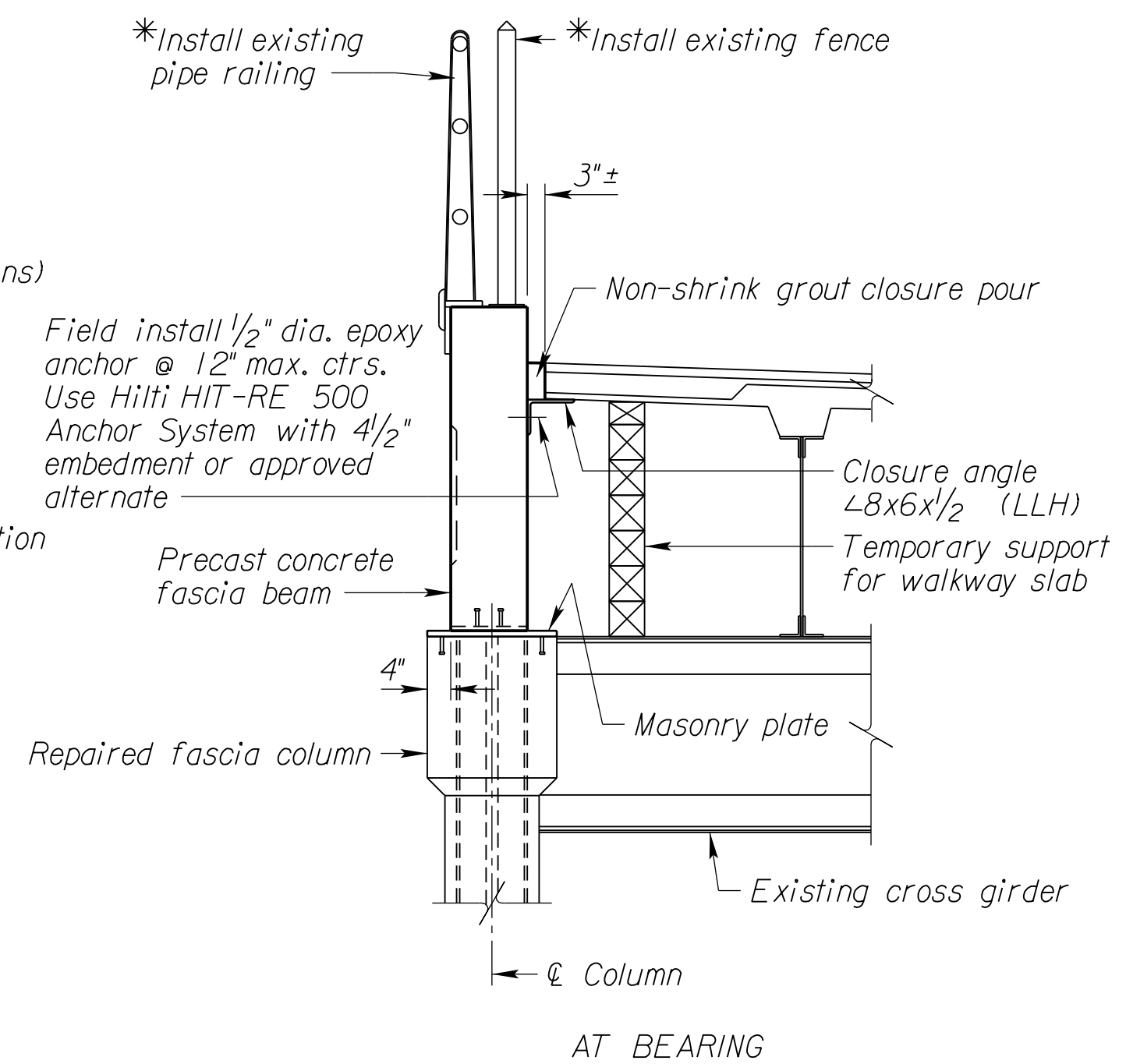
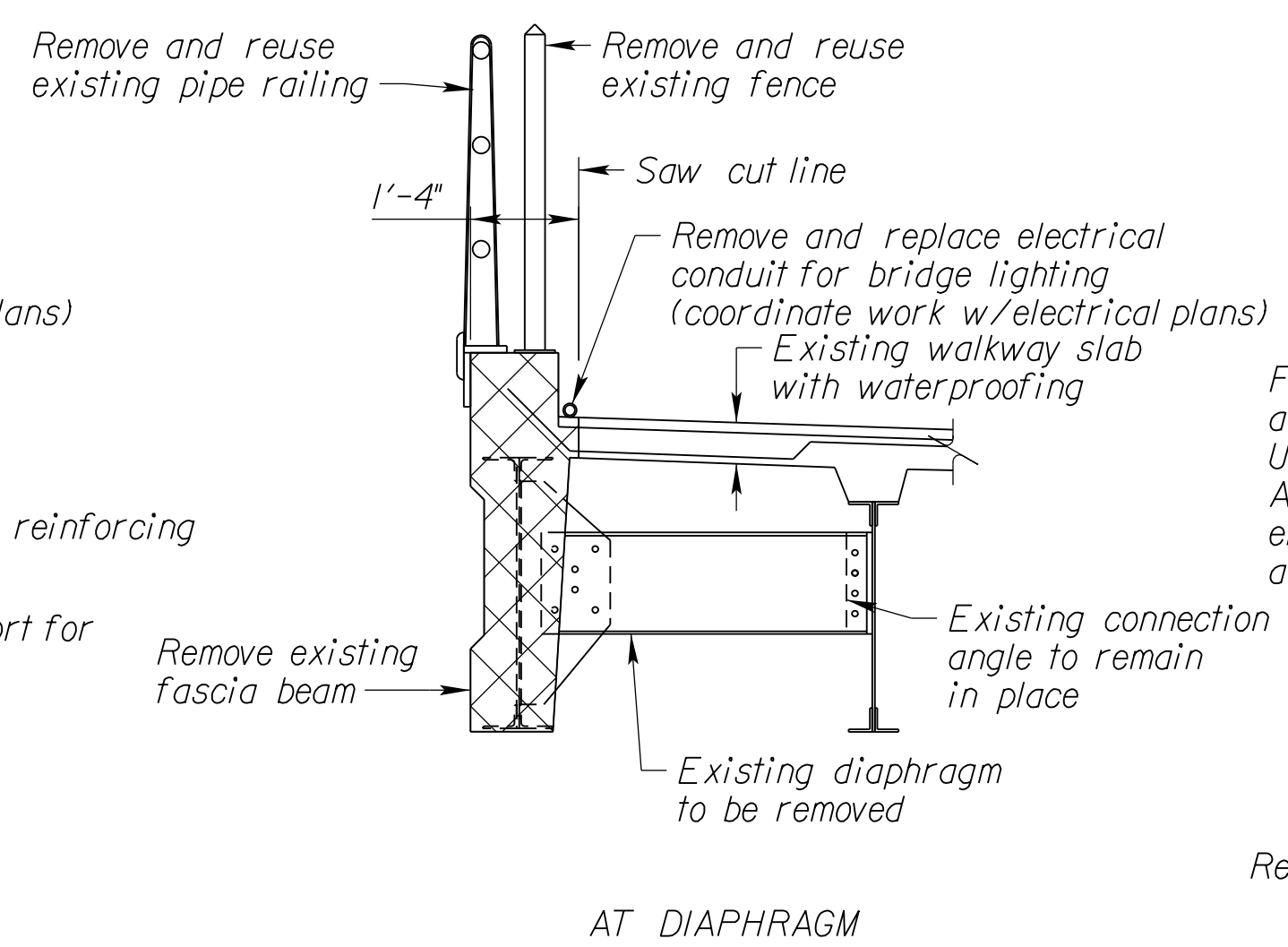


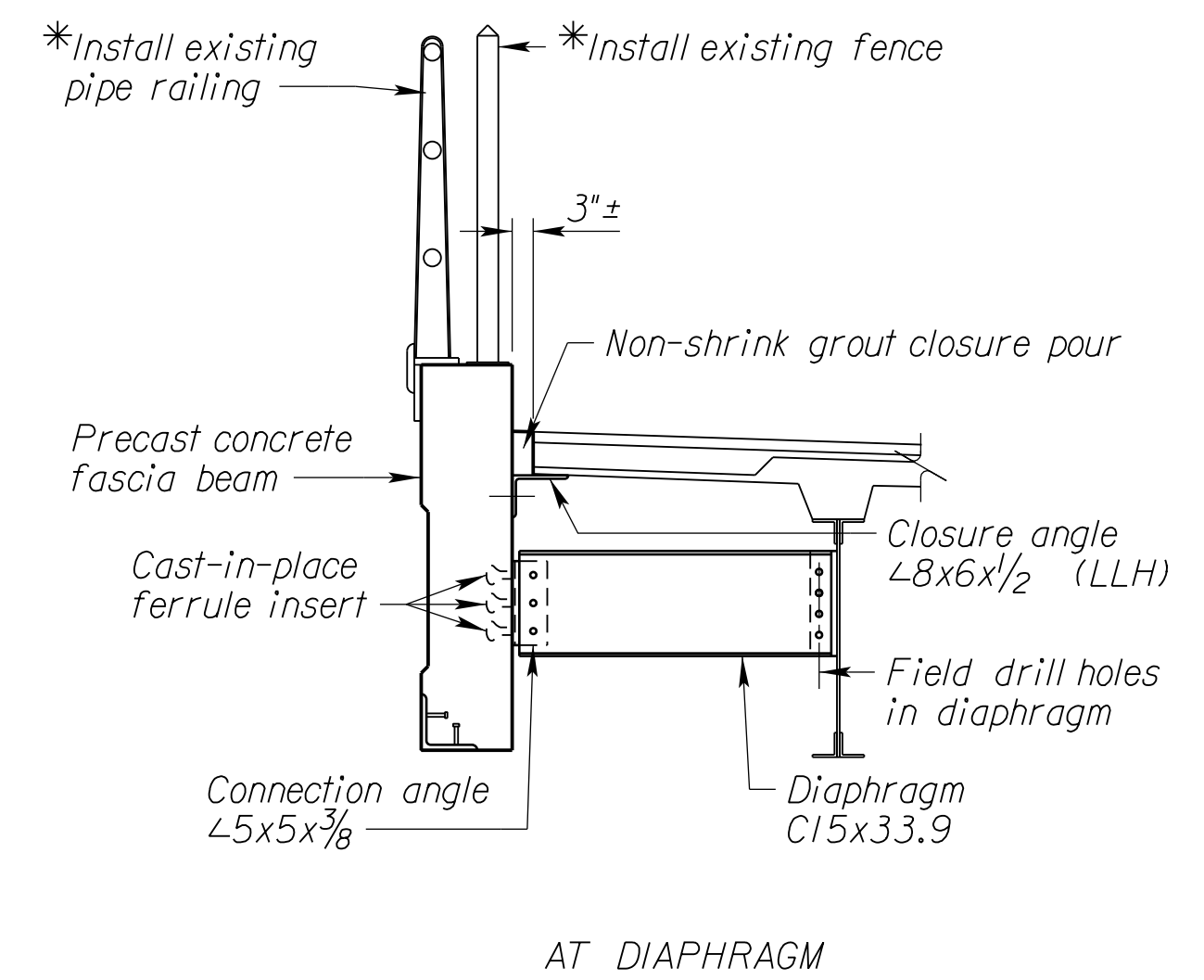
Note:  
 \*Install supports for pipe railing, fence, and lighting with anchors matching existing grade, size and embedment depth. Contractor to submit product details to Engineer for approval.



EXISTING EAST FASCIA BEAM SECTIONS



PROPOSED EAST FASCIA BEAM SECTIONS



Note:  
 For Diaphragm Detail see sheet 11.



DOUGLAS AVE.-BNSF  
 RAILROAD UNDERPASS  
 IMPROVEMENTS  
 WICHITA, KS



LK Architecture Inc. ©  
 345 RIVERVIEW, WICHITA, KS 67203  
 Phone: (316) 268-0230 Fax: (316) 268-0205

CONTACT: --  
 PROJECT NUMBER:

**17145**

SHEET TITLE:  
**EAST FASCIA BEAM  
 DETAILS 1 OF 3**

SHEET NUMBER:

**10**

LAT: 37.68622°N  
 LONG: 97.33001°W