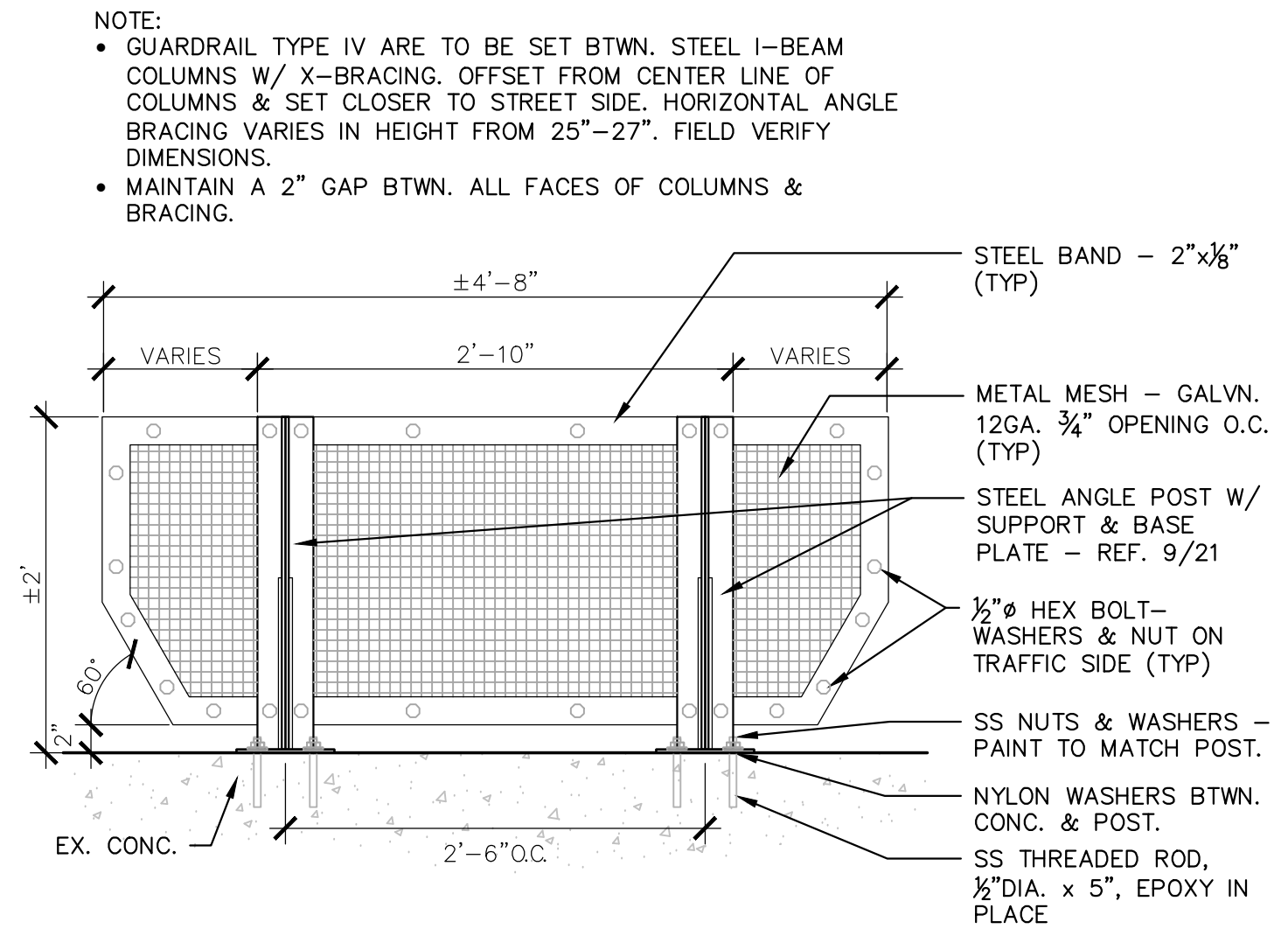


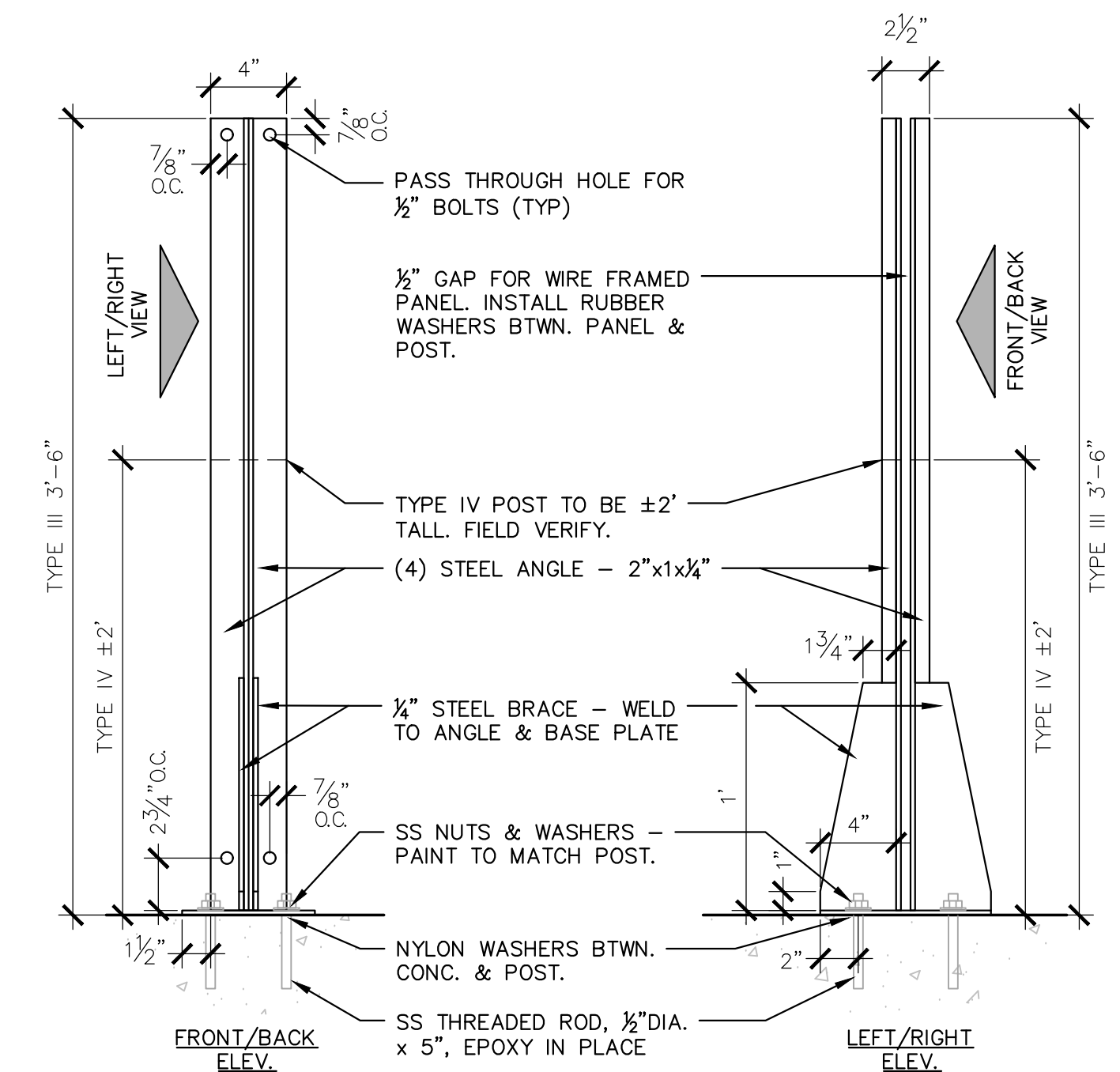
7 GUARDRAIL TYPE III - ELEVATION
 1" = 1'-0"

• PROVIDE SHOP DRAWINGS FOR REVIEW.
 • ALL METAL NON-STAINLESS STEEL PARTS TO BE GALVANIZED.
 • UNLESS OTHERWISE SPECIFIED PAINT ALL METAL PARTS TO MATCH STEEL STRUCTURE UNDER BRIDGE.
 • ALL BOLTS, WASHERS, NUTS, & THREADED RODS TO BE STAINLESS STEEL.



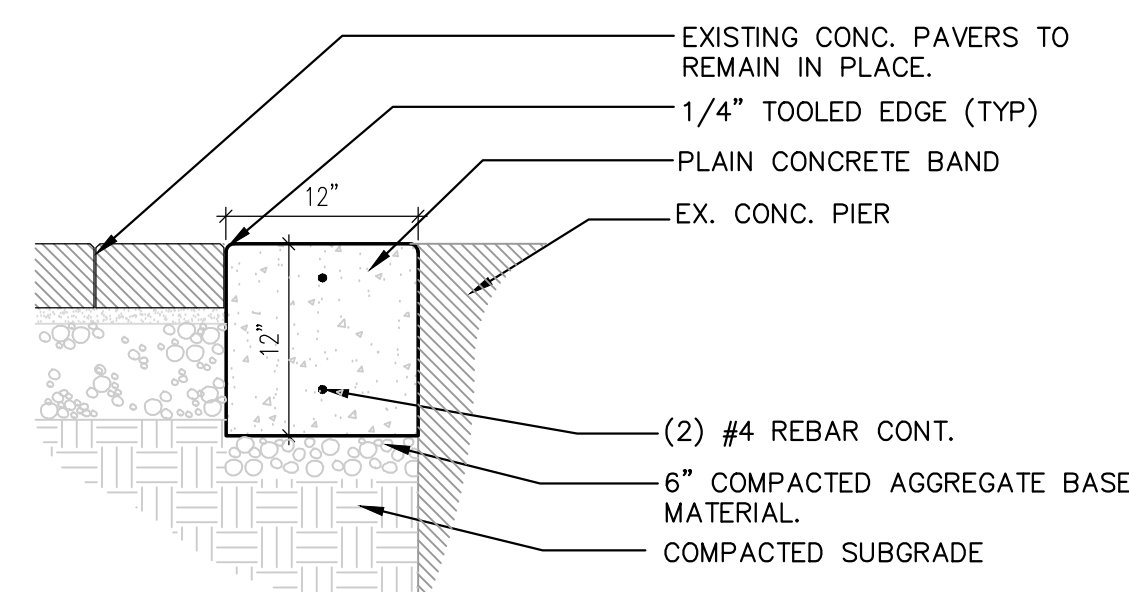
8 GUARDRAIL TYPE IV - ELEVATION
 1" = 1'-0"

• PROVIDE SHOP DRAWINGS FOR REVIEW.
 • ALL METAL NON-STAINLESS STEEL PARTS TO BE GALVANIZED.
 • UNLESS OTHERWISE SPECIFIED PAINT ALL METAL PARTS TO MATCH STEEL STRUCTURE UNDER BRIDGE.
 • ALL BOLTS, WASHERS, NUTS, & THREADED RODS TO BE STAINLESS STEEL.

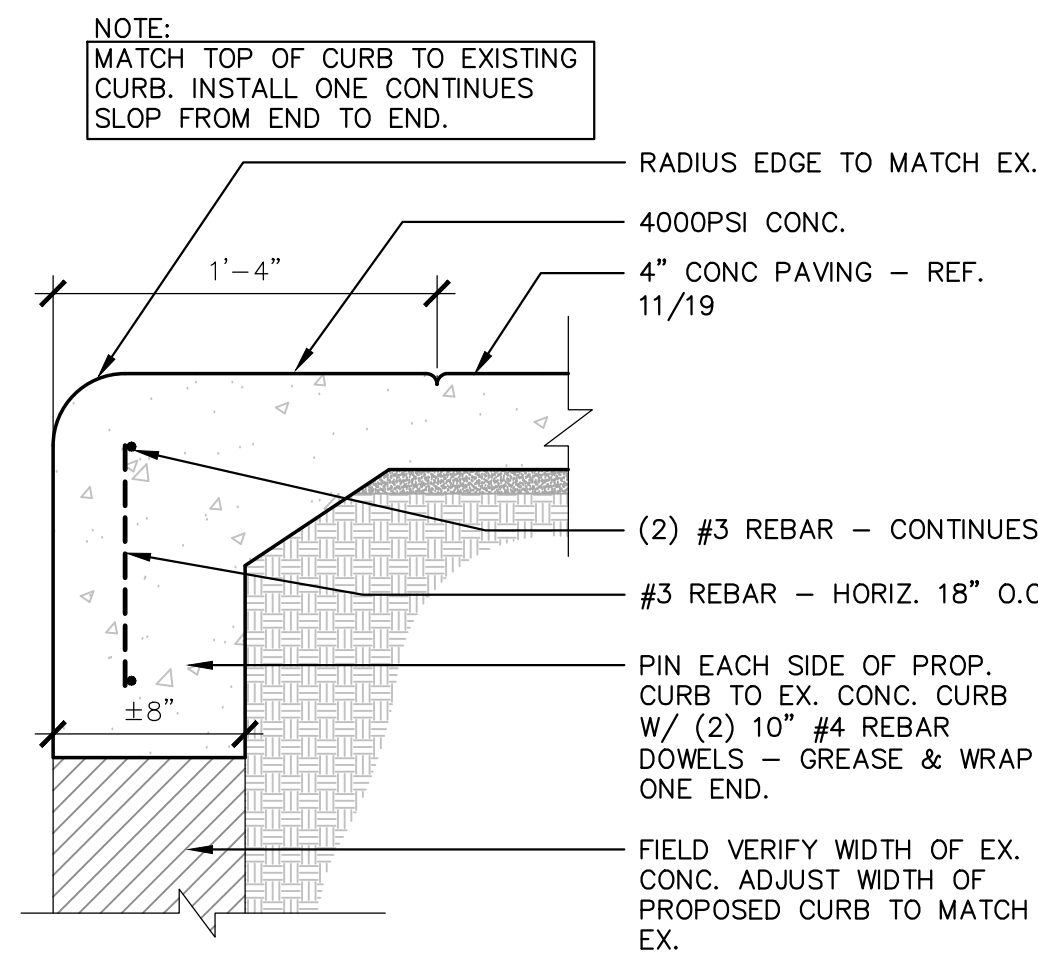


9 GUARDRAIL TYPE III & IV - POST
 1-1/2" = 1'-0"

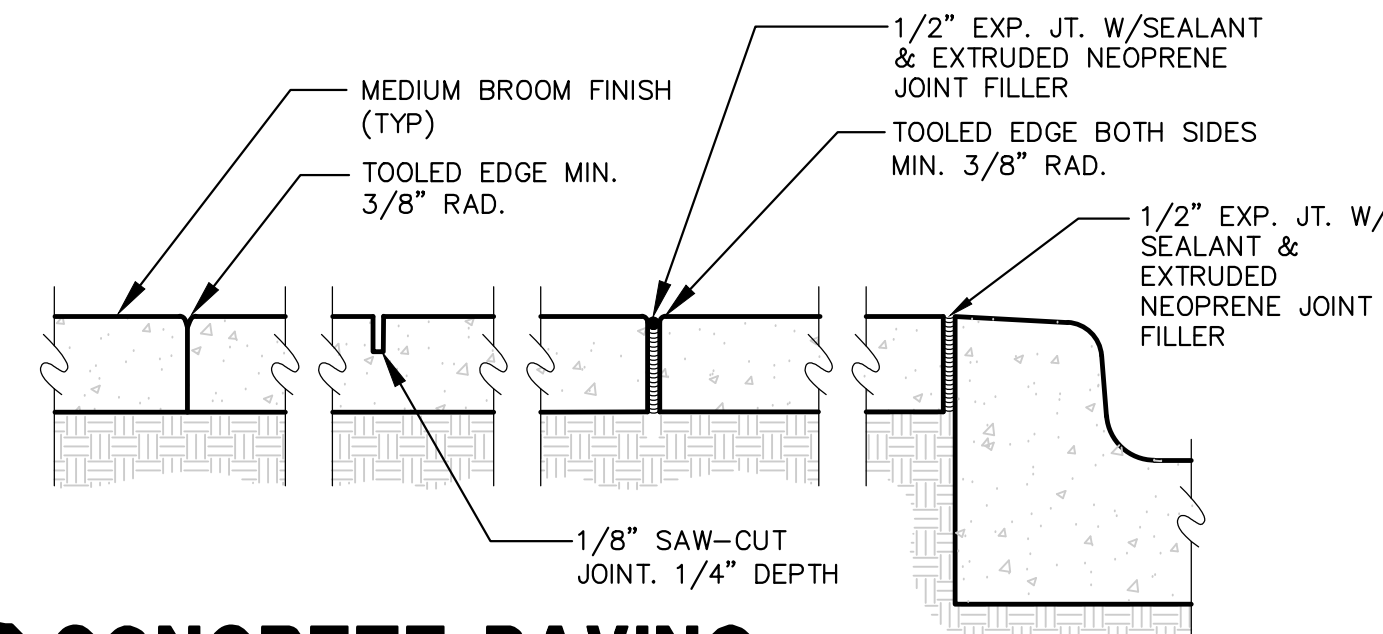
• PROVIDE SHOP DRAWINGS FOR REVIEW.
 • ALL METAL NON-STAINLESS STEEL PARTS TO BE GALVANIZED.
 • UNLESS OTHERWISE SPECIFIED PAINT ALL METAL PARTS TO MATCH STEEL STRUCTURE UNDER BRIDGE.
 • ALL BOLTS, WASHERS, NUTS, & THREADED RODS TO BE STAINLESS STEEL.



11 REINFORCED CONC. BANDING
 1" = 1'-0"

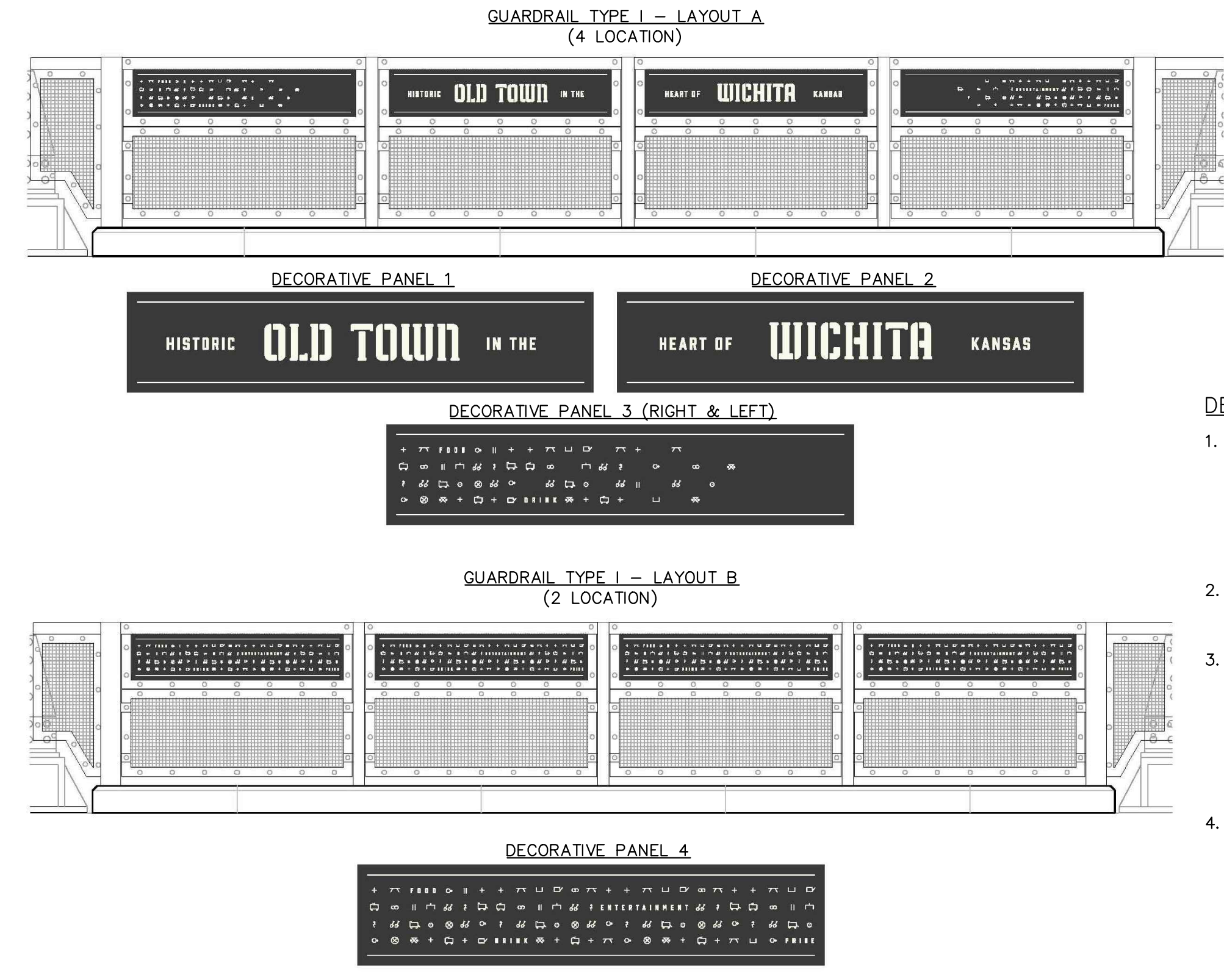


10 CONCRETE CURB REPAIR
 CONCRETE PER CITY STANDARD SPECS. 1-1/2" = 1'-0"



12 CONCRETE PAVING
 1-1/2" = 1'-0"

• 1/2" EXPANSION JOINT FOR CONCRETE WALK SHALL BE "SONOLASTIC EXPANSION JOINT FILLER" (GRAY); SONNEBORN, CHEMREX INC. OR APPROVED EQUIVALENT
 • SEALANT SHALL BE MULTI-PART POURABLE URETHANE SEALANT: "POURTHANE"; W.R. MEADOWS, INC. OR APPROVED EQUIVALENT.
 • ALL LABOR AND MATERIALS FOR EXPANSION AND CONTRACTION JOINTS SHALL BE SUBSIDIARY TO CONCRETE SIDEWALK.



13 GUARDRAIL - DECORATIVE PANEL
 1-1/2" = 1'-0"

DECORATIVE PANEL NOTES:
 1. FABRICATOR TO CONTACT ARCHITECT FOR VECTOR FILES FOR EACH PANEL TO BE CUT. THE CONTRACTOR WILL RECEIVE (5) FIVE VECTOR FILES; PANEL 1, PANEL 2, PANEL 3 (RIGHT), PANEL 3 (LEFT), AND PANEL 4
 2. PROVIDE SHOP DRAWINGS OF PANEL LAYOUT AND QUANTITIES FOR REVIEW.
 3. CONTRACTOR TO PROVIDE MOCKUPS FOR EACH PANEL CONCEPT FOR APPROVAL BY ARCHITECT. A TOTAL OF (5) FIVE PANELS WILL BE PROVIDED FOR REVIEW. IF ACCEPTED, MOCK-UP PANELS MAY BE USED IN FINAL WORK.
 4. PANELS DESIGNS ARE TO BE CUT USING A WATER JET METHOD, OR APPROVED EQUIVALENT. CUT AREAS ARE TO HAVE CLEAN AND SMOOTH EDGES. ANY PANEL WITH DEFECTS WILL BE REJECTED.