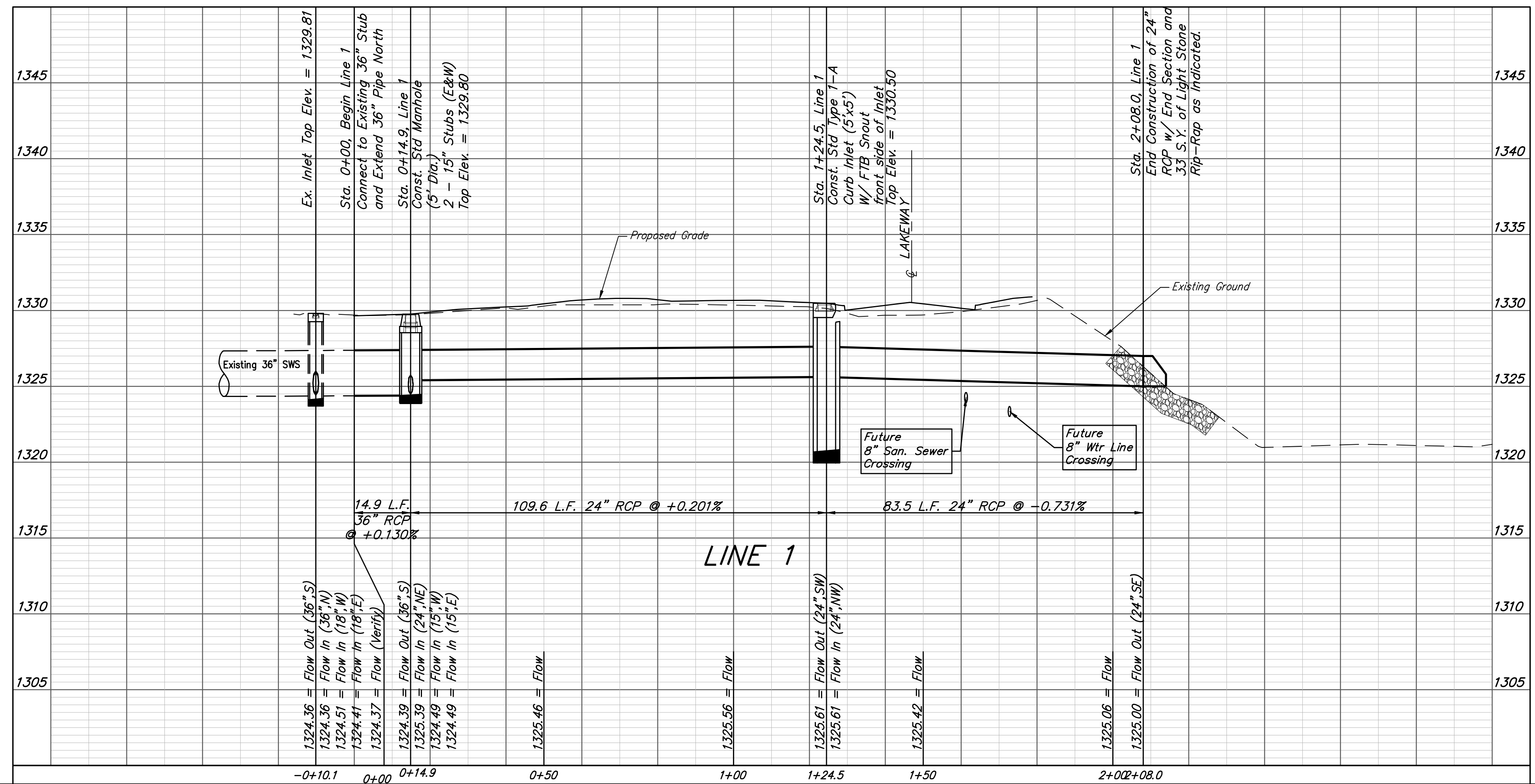
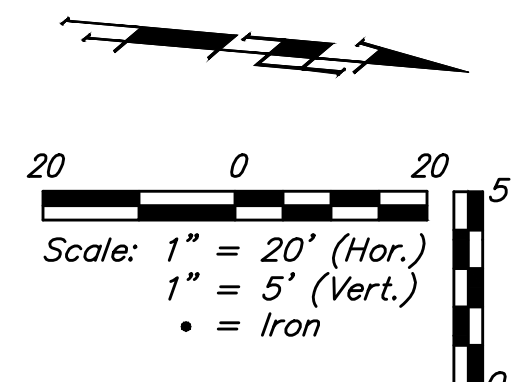
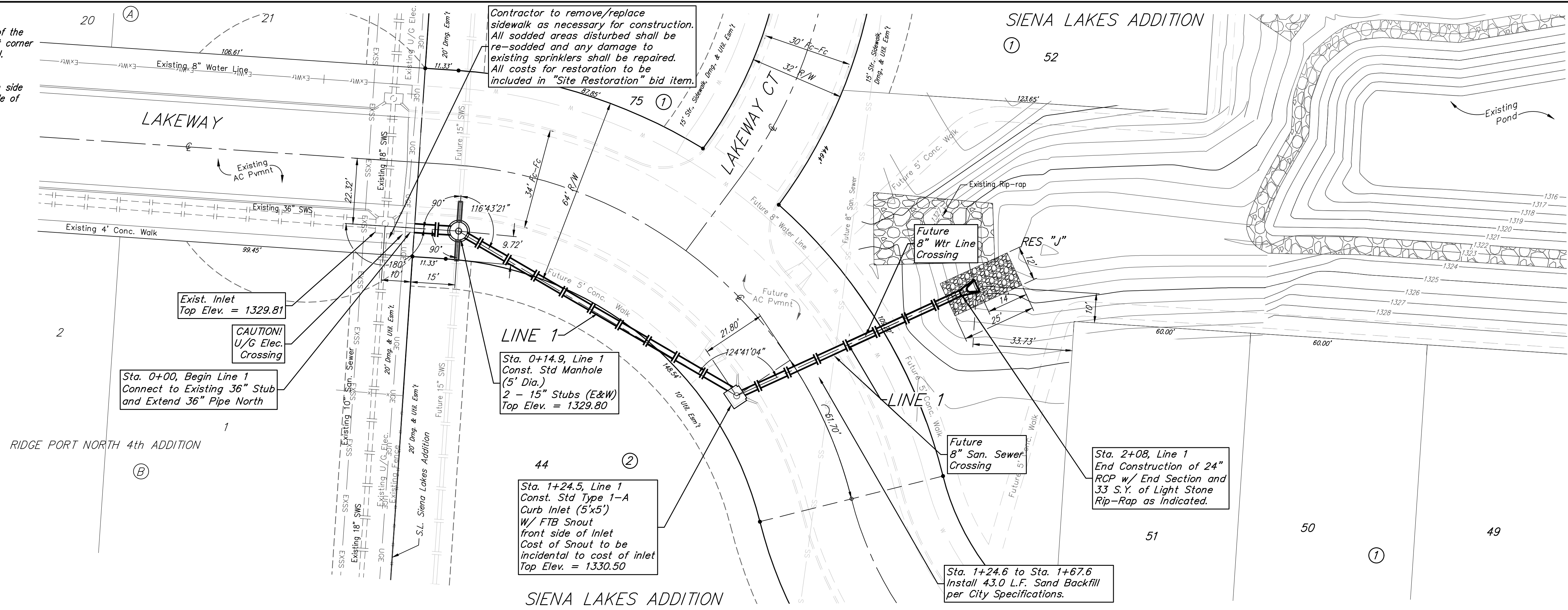


BENCHMARKS:
 Chiseled square at the end of the top of curb at the southeast corner of Ridge Port and 37th ST N.
 Elev. = 1333.05 NAVD88

Chiseled square on the south side of curb inlet on the east side of Lakeway ST
 Elev. = 1329.58 NAVD88



		Siena Lakes Addition - Phase II	
		LINE 1	
		Storm Water Sewer #695	
<small>Baughman Company, P.A. 315 Ellis St. Wichita, KS 67211 P 316-262-7271 F 316-262-0149 ENGINEERING SURVEYING PLANNING LANDSCAPE ARCHITECTURE</small>			
PROJECT NUMBER 468-85053	DESIGN AEG	DRAWN JAK	
REVISIONS:	APPROVED	DATE 1/05/18	
	SCALE Noted		
	SHEET		2 OF 14

I:\Projects\Siena Lakes\Engineering\Phase 2\SWS_1708E786\SWS PLANS.dwg