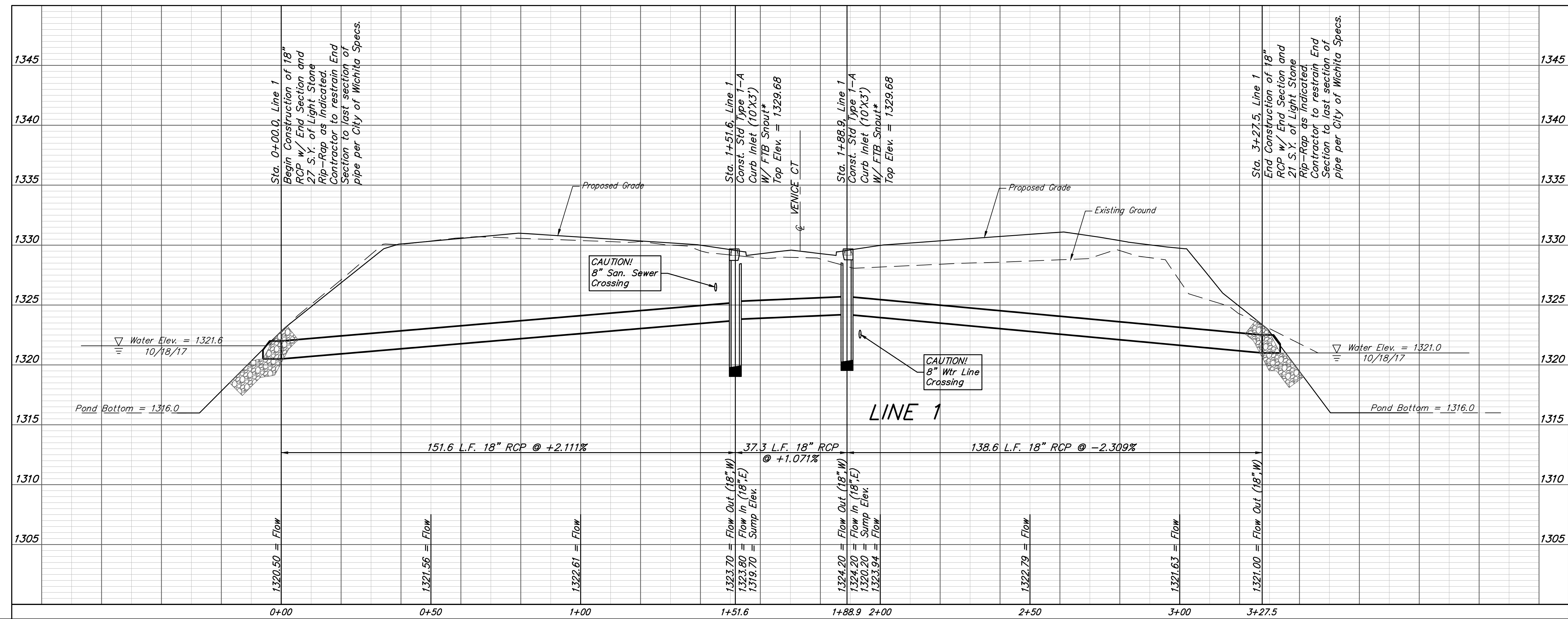
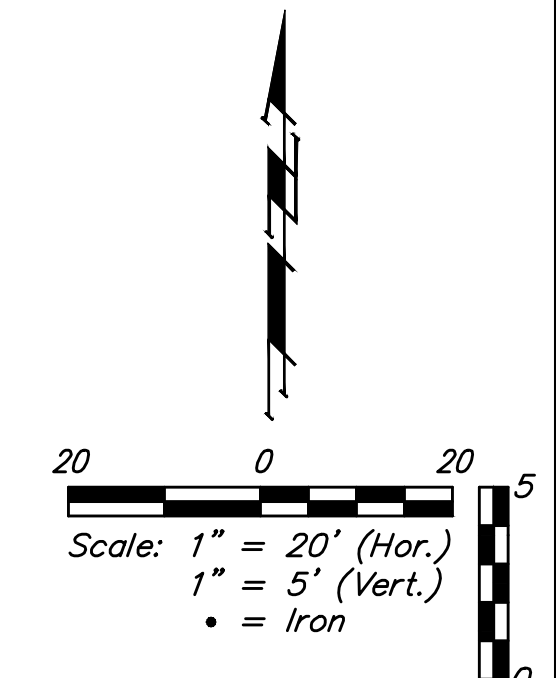
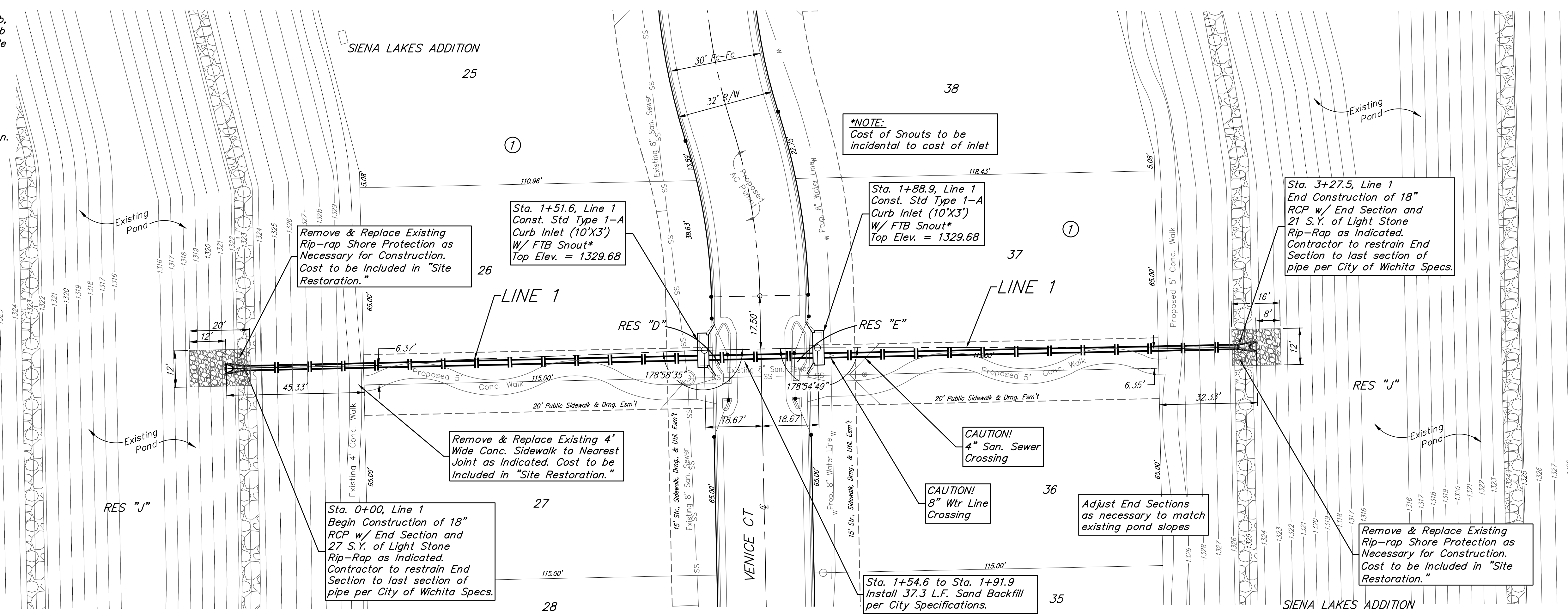


**BENCHMARK #1:**  
Chiseled square on top of curb, west end of south median curb within Red Oaks R/W, east side of Waterfront Parkway R/W. Elev. = 1380.50 NAVD88

**BENCHMARK #2:**  
Chiseled cross on conc. sidewalk, deflection corner in northwest line of Reserve "J", The Waterfront Seventh Addition. Elev. = 1381.88 NAVD88



		Siena Lakes Addition - Phase II	
		<b>LINE 1</b>	
Storm Water Sewer Improvements		Baughman Company, P.A. 315 Ellis St. Wichita, KS 67211 P 316-262-7271 F 316-262-0149 ENGINEERING   SURVEYING   PLANNING   LANDSCAPE ARCHITECTURE	
PROJECT NUMBER 472-85176	DESIGN AEG	DRAWN JAK	
REVISIONS:	APPROVED	DATE 1/05/18	
	SCALE Noted	SHEET <b>11 OF 27</b>	

I:\Projects\Siena Lakes\Engineering\Phase 2\STR\_1748-E787\SWS PLANS.dwg