

BENCHMARKS:
 Chiseled square at the end of the top of curb at the southeast corner of Ridge Port and 37th ST N.
 Elev. = 1333.05 NAVD88

Chiseled square on the south side of curb inlet on the east side of Lakeway ST.
 Elev. = 1329.58 NAVD88

 = Easements To Be Graded

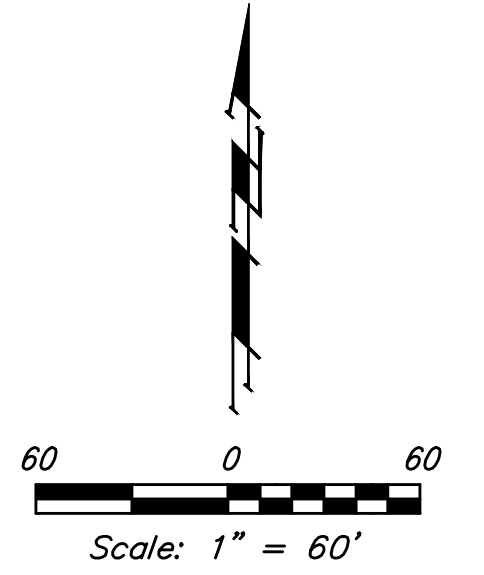
Approximate Easement Grading Quantities:
 (For Information Only)
 Excavation: 0 C.Y.
 Fill: 336 C.Y.

The Contractor shall grade the easements as shown to the elevations given on the easement grading plan.

The Contractor shall 'straight' grade the easements between the elevations given. Where a callout designates 'Match', the Contractor will grade to the existing ground elevation.





Excess excavation from easement grading and from sanitary sewer construction shall be spread or stockpiled at a location determined by the Developer.

All cost to be included in the Lump Sum bid item "Easement Grading"



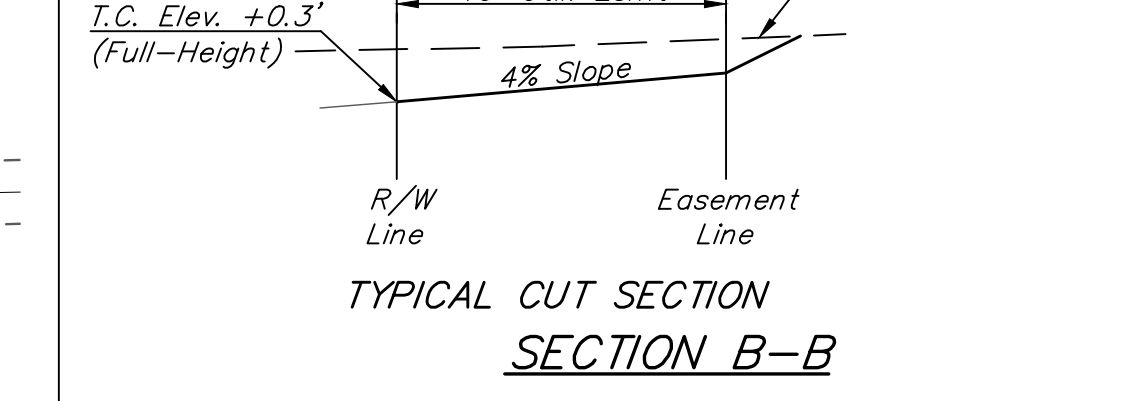
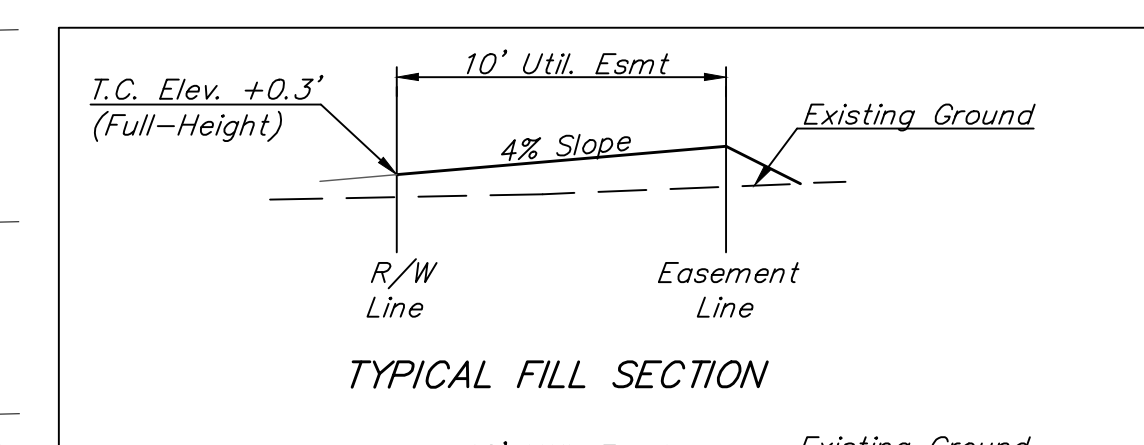
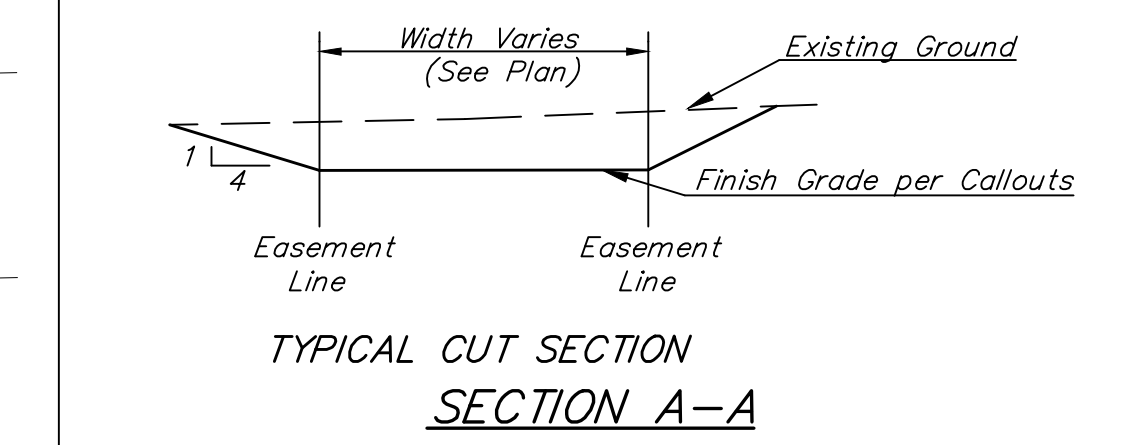
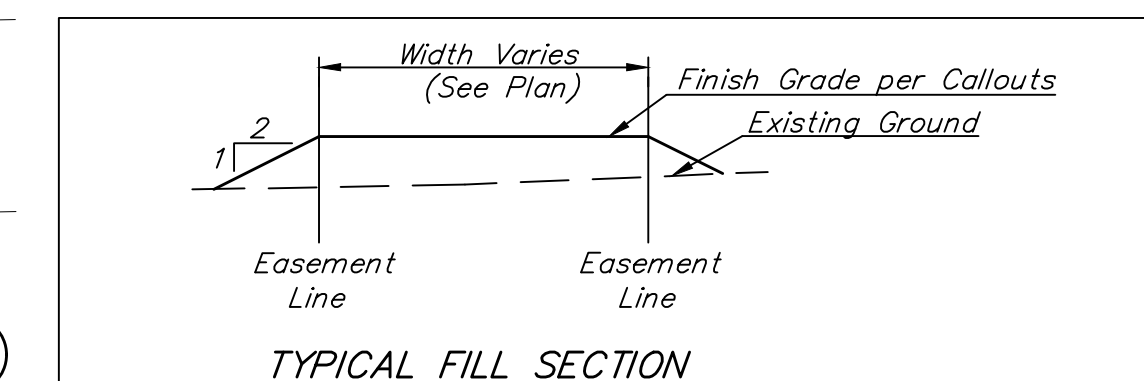
Existing Ground - - - - - 1364 - - - - -

EROSION CONTROL PLAN LEGEND

-  - DROP INLET PROTECTION
-  - CURB INLET PROTECTION
-  - EROSION CONTROL MAT
-  - BACK OF CURB PROTECTION

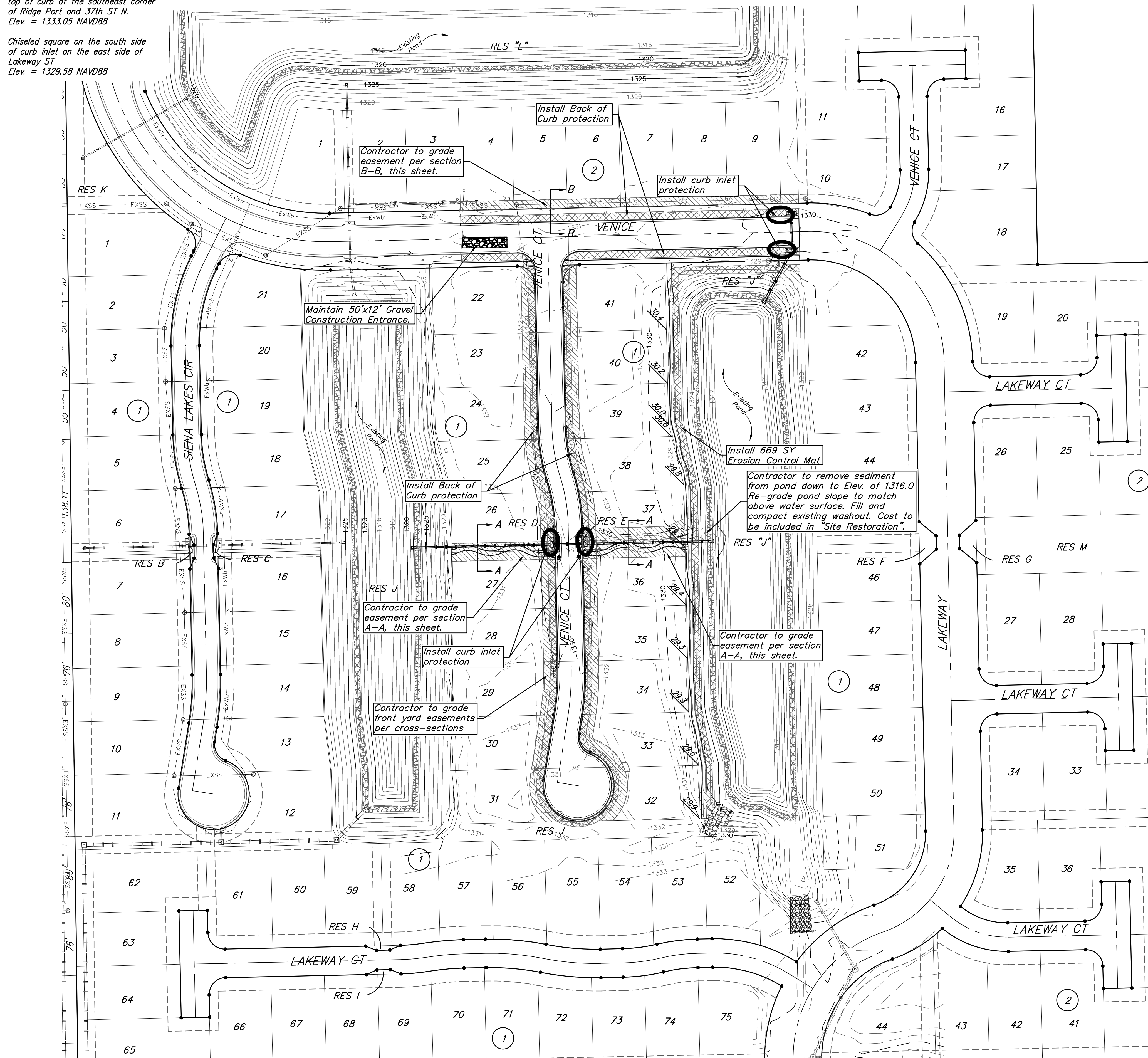
- NOTES:**
- Contractor shall make sure all erosion control is in place before project is accepted. This plan represents the minimum standard. Any additional erosion control measures shall be installed by the Contractor as needed.
 - Removal of Gravel Construction Entrance for pavement construction shall be included in bid item "Site Clearing & Restoration"
 - This Plan is Not To Be Used As A Comprehensive Grading Plan. All Spot Elevations Are Proposed & Subject To Change.

All areas disturbed during construction, unless otherwise noted, shall be seeded as follows:
 (Temporary Seeding)
 SEED -- Rye grass (PLS) -- 5 Lbs/1,000 Sq Ft.
 Res. "J" above static water surface shall be seeded and mulched up to existing grassed Elev. approx. 1325 as follows: (Permanent Seeding)
 SEED -- Kansas Premium Fescue Blend: 8 Lbs/1,000 Sq Ft
 Rye grass (PLS): 3 Lbs/1,000 Sq Ft
 Fertilizer -- 12-24-12 Ratio at 350 Lbs/Acre
 Mulch -- 2 Tons Prairie Hay / Acre



EROSION CONTROL MEASURE	INSTALL	MAINTAIN
BACK OF CURB PROTECTION (LF)	2,053	0
CONSTRUCTION ENTRANCE (EA)	0	1
CURB INLET BARRIER (EA)	4	0
EROSION CONTROL MAT (SY)	669	0
MAINTAIN EROSION CONTROL BMP's (LS)	0	1

* ALL EXISTING BMPs INCLUDING CONSTRUCTION ENTRANCE, SEDIMENT BARRIERS, SILT FENCE, CUT-OFF TRENCH, AND EROSION CONTROL MAT SHALL BE MAINTAINED AND REPAIRED IF NECESSARY.



Baughman Engineering | Surveying | Planning | Landscape Architecture

Siena Lakes Addition - Phase II
EROSION CONTROL
 Street / SWS Improvements

Baughman Company, P.A. 315 Ellis St. Wichita, KS 67211 P 316-262-7271 F 316-262-0149
 ENGINEERING | SURVEYING | PLANNING | LANDSCAPE ARCHITECTURE

PROJECT NUMBER 472-85176	DESIGN AEG	DRAWN JAK
REVISIONS:	APPROVED	DATE 1/05/18
	SCALE Noted	SHEET 13 OF 27

E:\Projects\Siena Lakes\Engineering\Phase 2\STR_17-08-E787\STR PLANS.dwg