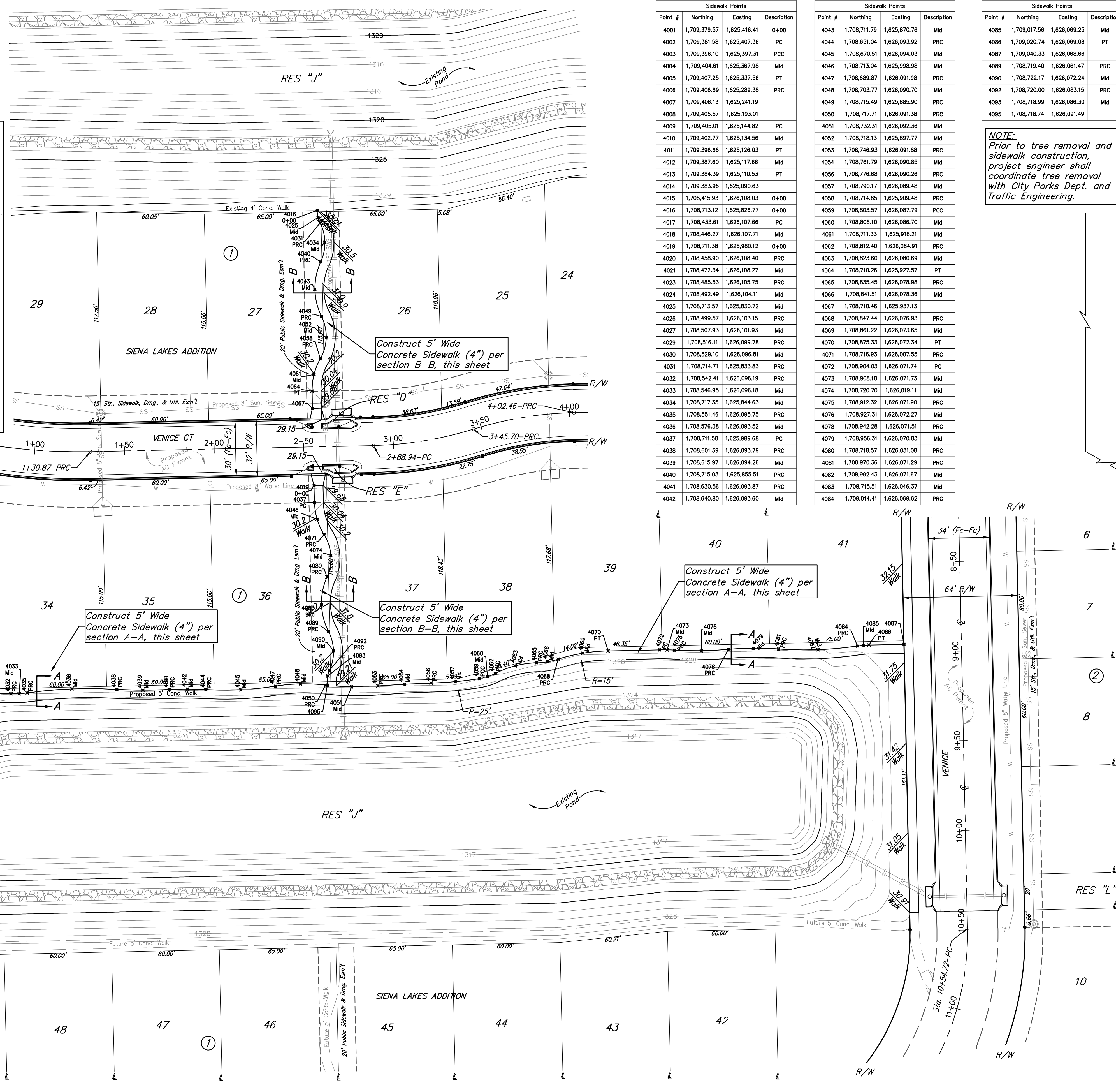
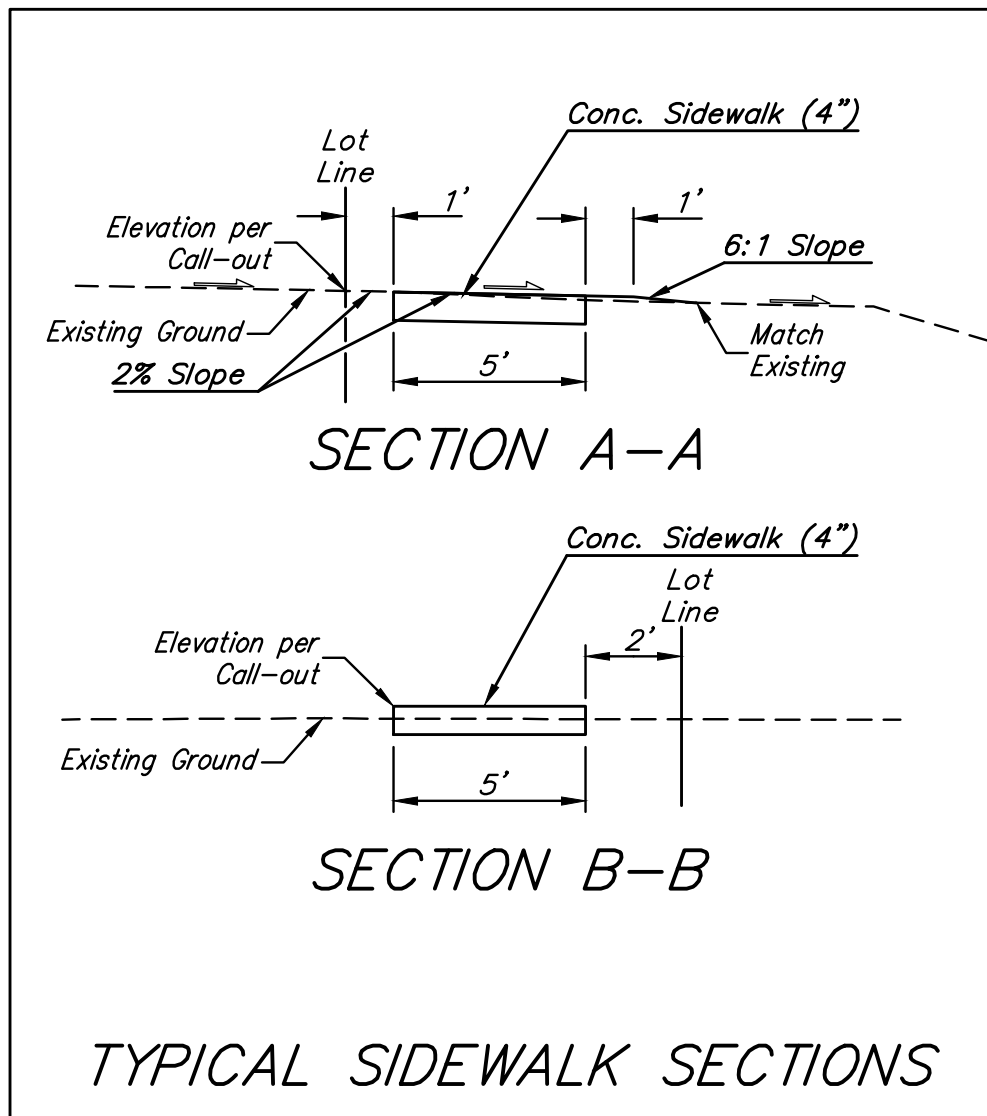


**BENCHMARKS:**  
Chiseled square at the end of the top of curb at the southeast corner of Ridge Port and 37th St N.  
Elev. = 1333.05 NAVD88

Chiseled square on the south side of curb inlet on the east side of Lakeway St.  
Elev. = 1329.58 NAVD88



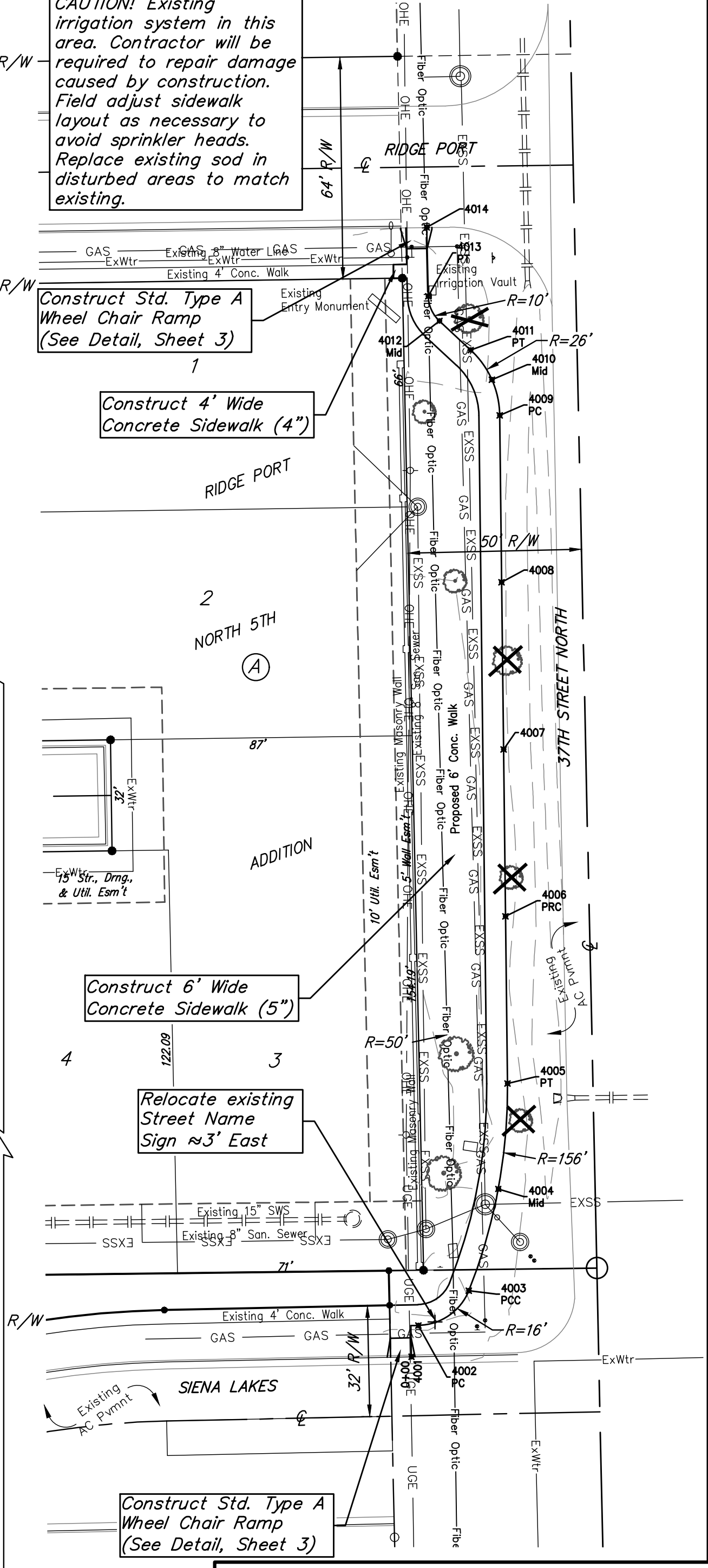
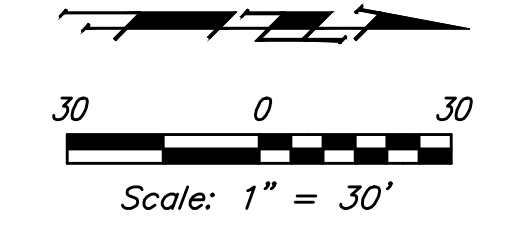
Point #	Northing	Easting	Description
4001	1,709,379.57	1,625,416.41	O+00
4002	1,709,381.58	1,625,407.36	PC
4003	1,709,396.10	1,625,397.31	PCC
4004	1,709,404.61	1,625,367.98	Mid
4005	1,709,407.25	1,625,337.56	PT
4006	1,709,406.69	1,625,289.38	PRC
4007	1,709,406.13	1,625,241.19	
4008	1,709,405.57	1,625,193.01	
4009	1,709,405.01	1,625,144.82	PC
4010	1,709,402.77	1,625,134.56	Mid
4011	1,709,396.66	1,625,126.03	PT
4012	1,709,387.60	1,625,117.66	Mid
4013	1,709,384.39	1,625,110.53	PT
4014	1,709,383.96	1,625,090.63	
4015	1,708,415.93	1,626,108.03	O+00
4016	1,708,713.12	1,625,826.77	O+00
4017	1,708,433.61	1,626,107.66	PC
4018	1,708,446.27	1,626,107.71	Mid
4019	1,708,711.38	1,625,980.12	O+00
4020	1,708,458.90	1,626,108.40	PRC
4021	1,708,472.34	1,626,108.27	Mid
4022	1,708,485.53	1,626,105.75	PRC
4023	1,708,492.49	1,626,104.11	Mid
4024	1,708,713.57	1,625,830.72	Mid
4025	1,708,710.46	1,625,937.13	PRC
4026	1,708,499.57	1,626,103.15	PRC
4027	1,708,507.93	1,626,101.93	Mid
4028	1,708,516.11	1,626,099.78	PRC
4029	1,708,529.10	1,626,096.81	Mid
4030	1,708,714.71	1,625,833.83	PRC
4031	1,708,542.41	1,626,096.19	PRC
4032	1,708,546.95	1,626,096.18	Mid
4033	1,708,717.35	1,625,844.63	Mid
4034	1,708,551.46	1,626,095.75	PRC
4035	1,708,551.46	1,626,095.75	PRC
4036	1,708,576.38	1,626,093.52	Mid
4037	1,708,711.58	1,625,989.68	PC
4038	1,708,601.39	1,626,093.79	PRC
4039	1,708,615.97	1,626,094.26	Mid
4040	1,708,715.03	1,625,855.51	PRC
4041	1,708,630.56	1,626,093.87	PRC
4042	1,708,640.80	1,626,093.60	Mid

Point #	Northing	Easting	Description
4043	1,708,711.79	1,625,870.76	Mid
4044	1,708,651.04	1,626,093.92	PRC
4045	1,708,670.51	1,626,094.03	Mid
4046	1,708,713.04	1,625,998.98	Mid
4047	1,708,689.87	1,626,091.98	PRC
4048	1,708,703.77	1,626,090.70	Mid
4049	1,708,715.49	1,625,885.90	PRC
4050	1,708,717.71	1,626,091.38	PRC
4051	1,708,732.31	1,626,092.36	Mid
4052	1,708,718.13	1,625,897.77	Mid
4053	1,708,746.93	1,626,091.88	PRC
4054	1,708,761.79	1,626,090.85	Mid
4055	1,708,776.68	1,626,090.26	PRC
4056	1,708,790.17	1,626,089.48	Mid
4057	1,708,714.85	1,625,909.48	PRC
4058	1,708,803.57	1,626,087.79	PCC
4059	1,708,808.10	1,626,086.70	Mid
4060	1,708,711.33	1,625,918.21	Mid
4061	1,708,812.40	1,626,084.91	PRC
4062	1,708,823.60	1,626,080.69	Mid
4063	1,708,710.26	1,625,927.57	PT
4064	1,708,835.45	1,626,078.98	PRC
4065	1,708,841.51	1,626,078.36	Mid
4066	1,708,875.33	1,626,072.34	PT
4067	1,708,716.93	1,626,007.55	PRC
4068	1,708,904.03	1,626,071.74	PC
4069	1,708,908.18	1,626,071.73	Mid
4070	1,708,720.70	1,626,019.11	Mid
4071	1,708,912.32	1,626,071.90	PRC
4072	1,708,927.31	1,626,072.27	Mid
4073	1,708,942.28	1,626,071.51	PRC
4074	1,708,956.31	1,626,070.83	Mid
4075	1,708,718.57	1,626,031.08	PRC
4076	1,708,970.36	1,626,071.29	PRC
4077	1,708,992.43	1,626,071.67	Mid
4078	1,708,715.51	1,626,046.37	PRC
4079	1,708,014.41	1,626,069.62	Mid

Point #	Northing	Easting	Description
4085	1,709,017.56	1,626,069.25	Mid
4086	1,709,020.74	1,626,069.08	PT
4087	1,709,040.33	1,626,068.66	
4088	1,708,719.40	1,626,061.47	PRC
4089	1,708,722.17	1,626,072.24	Mid
4090	1,708,720.00	1,626,083.15	PRC
4091	1,708,718.99	1,626,086.30	Mid
4092	1,708,718.74	1,626,091.49	

= Existing Tree to be Removed by Contractor

**NOTE:**  
Existing trees to remain and be protected from damage during sidewalk construction unless noted to be removed.  
**CAUTION!** Existing irrigation system in this area. Contractor will be required to repair damage caused by construction. Field adjust sidewalk layout as necessary to avoid sprinkler heads. Replace existing sod in disturbed areas to match existing.



**Baughman** Siena Lakes Addition - Phase II  
**SIDEWALK PLAN**  
Street / SWS Improvements

Baughman Company, P.A. 315 Ellis St. Wichita, KS 67211 P 316-262-7271 F 316-262-0149  
ENGINEERING | SURVEYING | PLANNING | LANDSCAPE ARCHITECTURE

PROJECT NUMBER 472-85176	DESIGN AEG	DRAWN JAK
REVISIONS:	APPROVED	DATE 1/05/18
SCALE Noted		SHEET <b>14 OF 27</b>

E:\Projects\Siena Lakes\Engineering\Phase 2\STR\_17-08-1787\STR PLANS.dwg