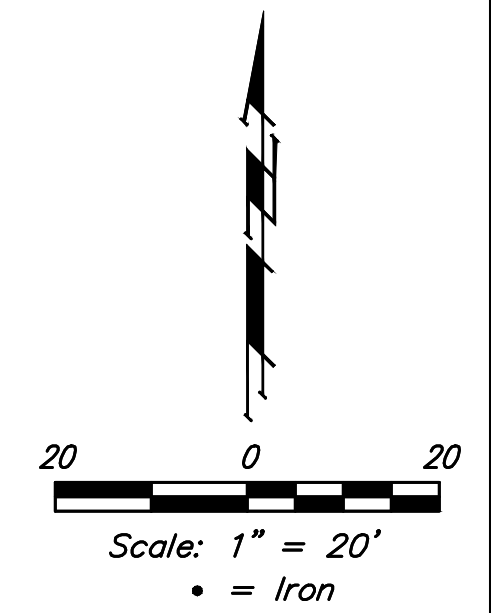


BENCHMARKS:
 Chiseled square at the end of the top of curb at the southeast corner of Ridge Port and 37th ST N.
 Elev. = 1333.05 NAVD88

Chiseled square on the south side of curb inlet on the east side of Lakeway ST
 Elev. = 1329.58 NAVD88

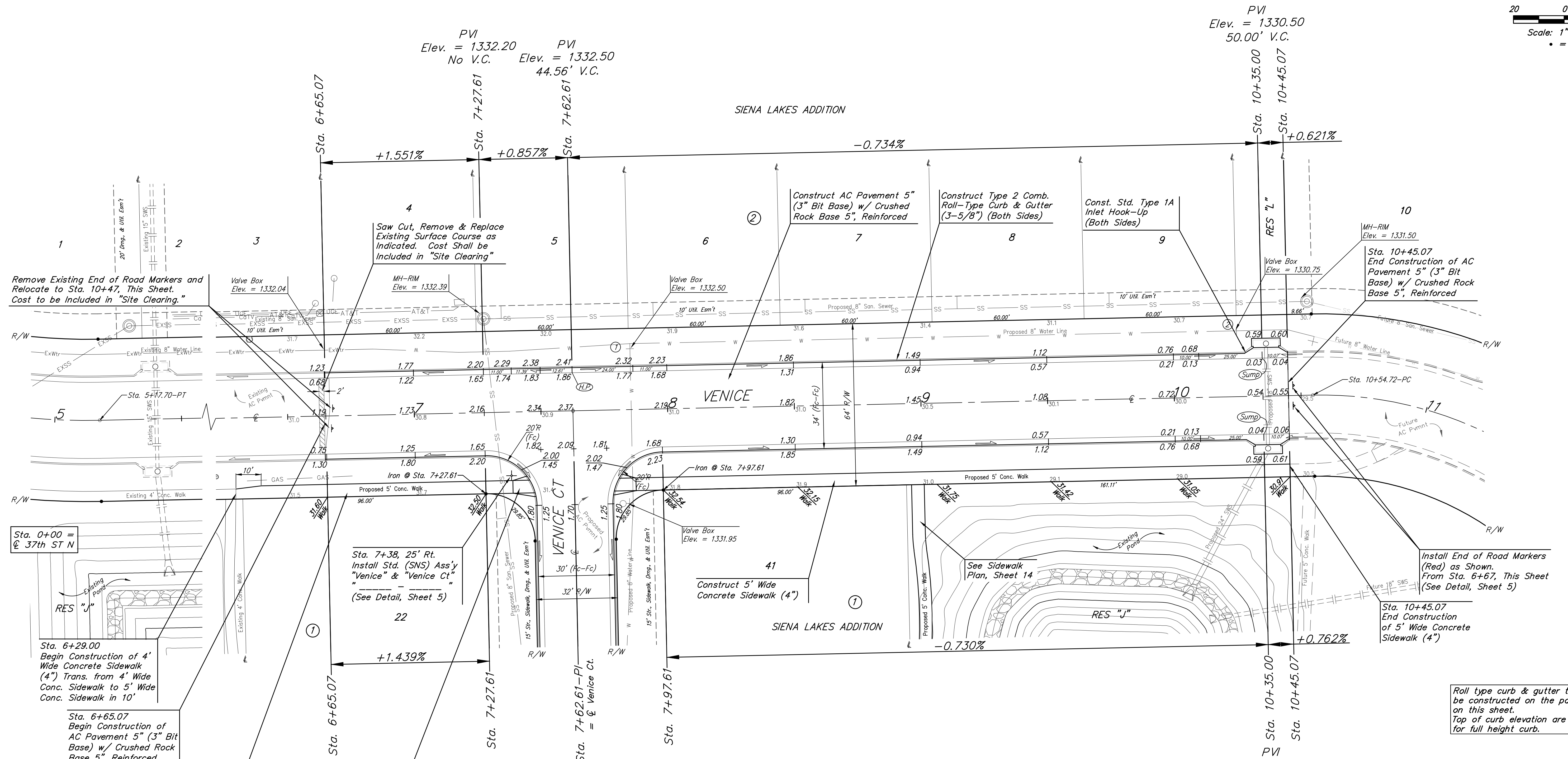


PVI
 Elev. = 1332.20
 No V.C.

PVI
 Elev. = 1332.50
 44.56' V.C.

PVI
 Elev. = 1330.50
 50.00' V.C.

SIENA LAKES ADDITION



Remove Existing End of Road Markers and Relocate to Sta. 10+47, This Sheet.
 Cost to be Included in "Site Clearing."

Saw Cut, Remove & Replace Existing Surface Course as Indicated. Cost Shall be Included in "Site Clearing"

Construct AC Pavement 5" (3" Bit Base) w/ Crushed Rock Base 5", Reinforced

Construct Type 2 Comb. Roll-Type Curb & Gutter (3-5/8") (Both Sides)

Const. Std. Type 1A Inlet Hook-Up (Both Sides)

Sta. 10+45.07 End Construction of AC Pavement 5" (3" Bit Base) w/ Crushed Rock Base 5", Reinforced

Sta. 0+00 = ϕ 37th ST N

Sta. 7+38, 25' Rt. Install Std. (SNS) Ass'y "Venice" & "Venice Ct" (See Detail, Sheet 5)

Construct 5' Wide Concrete Sidewalk (4")

Install End of Road Markers (Red) as Shown. From Sta. 6+67, This Sheet (See Detail, Sheet 5)

Sta. 10+45.07 End Construction of 5' Wide Concrete Sidewalk (4")

Sta. 6+29.00 Begin Construction of 4' Wide Concrete Sidewalk (4") Trans. from 4' Wide Conc. Sidewalk to 5' Wide Conc. Sidewalk in 10'

Sta. 6+65.07 Begin Construction of AC Pavement 5" (3" Bit Base) w/ Crushed Rock Base 5", Reinforced

Construct 5' Wide Concrete Sidewalk (4")

Construct Std. Type A Wheel Chair Ramp (Both Sides) (See Detail, Sheet 3)

Roll type curb & gutter to be constructed on the pavement on this sheet. Top of curb elevation are given for full height curb.

VALVE LOCATION TABLE

Valve Number	Baseline Station	Offset Distance	Offset Direction
1	8+85.58	24'	Lt
2	10+25.00	24'	Lt

Baughman Siena Lakes Addition - Phase II
VENICE
 Sta. 6+65.07 to Sta. 10+45.07

Baughman Company, P.A. 315 Ellis St. Wichita, KS 67211 P 316-262-7271 F 316-262-0149
 ENGINEERING | SURVEYING | PLANNING | LANDSCAPE ARCHITECTURE

PROJECT NUMBER 472-85176	DESIGN AEG	DRAWN JAK
REVISIONS:	APPROVED	DATE 1/05/18
	SCALE Noted	SHEET 8 OF 27

U:\Projects\Siena Lakes\Engineering\Phase II\STR_17484787\STR PLANS.dwg