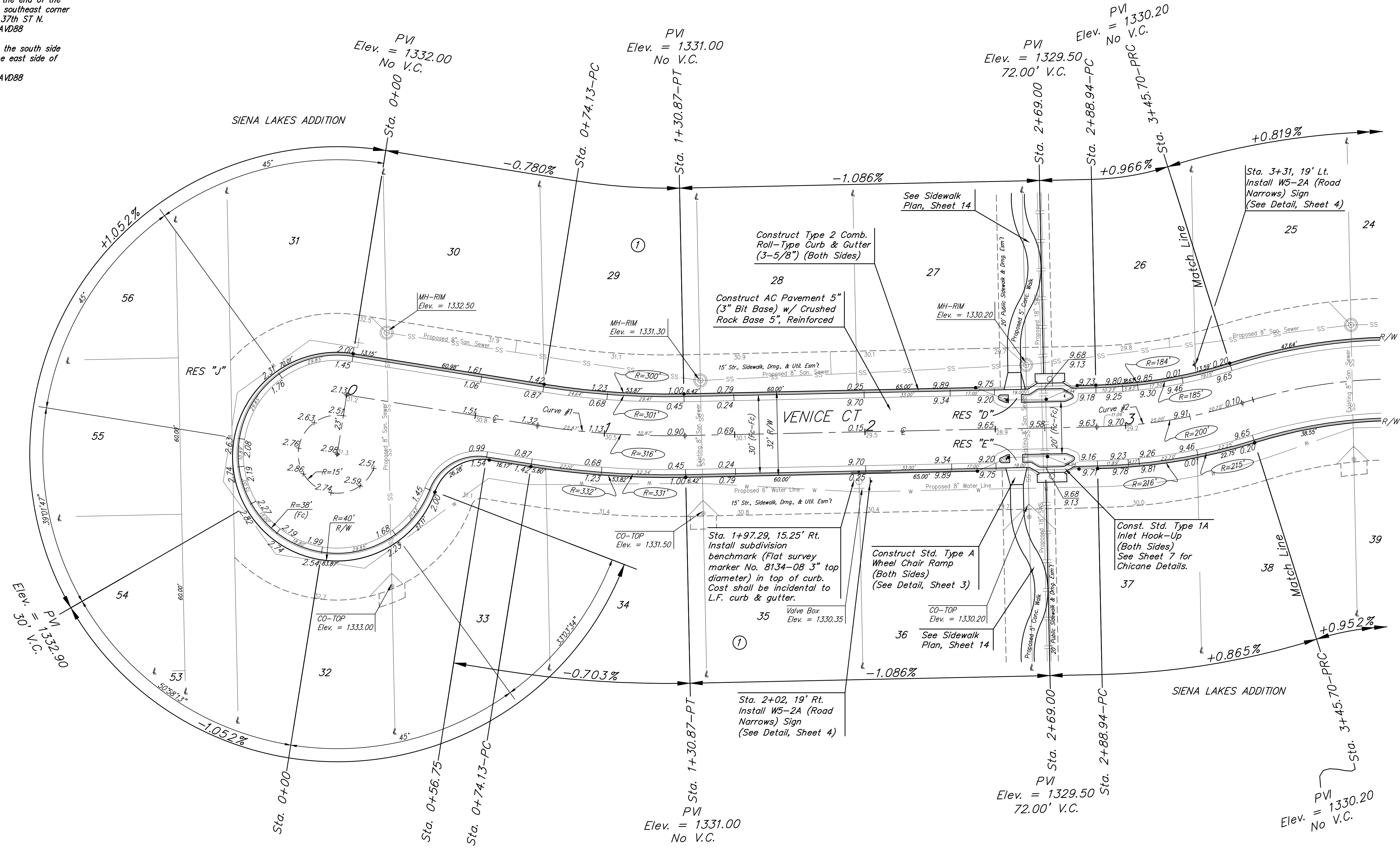
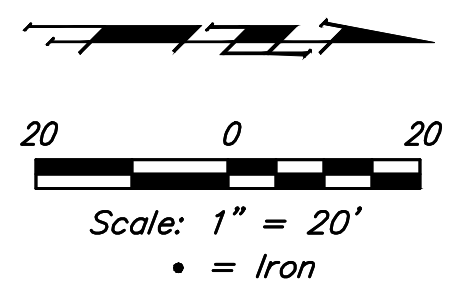


**BENCHMARKS:**  
 Chiseled square at the end of the top of curb at the southeast corner of Ridge Port and 37th ST N.  
 Elev. = 1333.05 NAVD88

Chiseled square on the south side of curb inlet on the east side of Lakeway ST  
 Elev. = 1329.58 NAVD88



Roll type curb & gutter to be constructed on the pavement on this sheet.  
 Top of curb elevation are given for full height curb.

Curve #1  
 Curve Data Based on Centerline  
 Rad. = 316' Delta = 107°19' Tangent = 28.45'  
 Arc = 56.74' L.C. = 56.67' Def./Ft. = 5.43987 Min.

Station	Arc	Face Chord Lengths		Defl.	Total Defl.
		8' Left	8' Right		
0+74.13	-	-	-	0'00"00"	0'00"00"
0+75.00	0.87'	0.93'	0'04"44"	0'04"44"	0'04"44"
1+00.00	25.00'	23.18'	26.81'	2'16"00"	2'20"44"
1+25.00	25.00'	23.18'	26.81'	2'16"00"	4'36"44"
1+30.87	5.87'	5.44'	6.30'	0'31"55"	5'08"39"

Curve #2  
 Curve Data Based on Centerline  
 Rad. = 200' Delta = 16°15'36" Tangent = 28.57'  
 Arc = 56.76' L.C. = 56.57' Def./Ft. = 8.59408 Min.

Station	Arc	Face Chord Lengths		Defl.	Total Defl.
		8' Left	8' Right		
2+88.94	-	-	-	0'00"00"	0'00"00"
3+00.00	11.06'	9.79'	12.33'	1'35"03"	1'35"03"
3+25.00	25.00'	22.11'	27.86'	3'34"51"	5'09"54"
3+45.70	20.70'	18.31'	23.07'	2'57"54"	8'07"48"

**Baughman** Siena Lakes Addition - Phase II  
**VENICE CT**  
 Sta. 0+00 to Sta. 3+45.70

Baughman Company, P.A. 315 Ellis St. Wichita, KS 67211 P 316-262-7271 F 316-262-0149  
 ENGINEERING | SURVEYING | PLANNING | LANDSCAPE ARCHITECTURE

PROJECT NUMBER 472-85176	DESIGN AEG	DRAWN JAK
REVISIONS:	APPROVED	DATE 1/05/18
	SCALE Noted	SHEET <b>9 OF 27</b>

\\Projects\Siena Lakes\Engineering\Phase 2\STR\_1748E787\STR PLANS.dwg