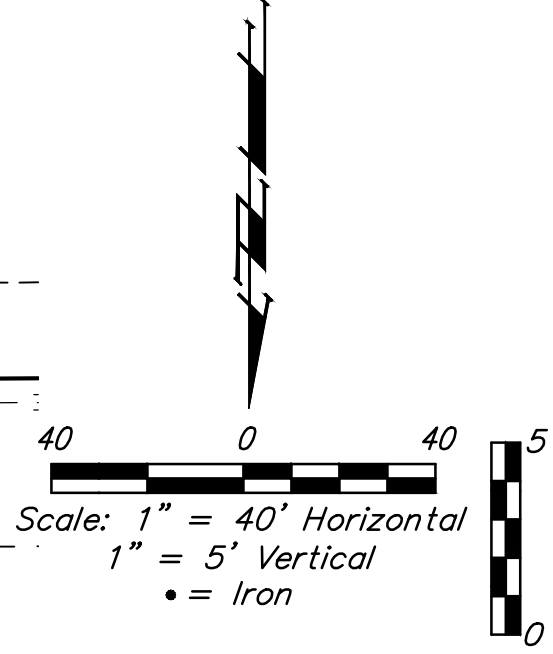
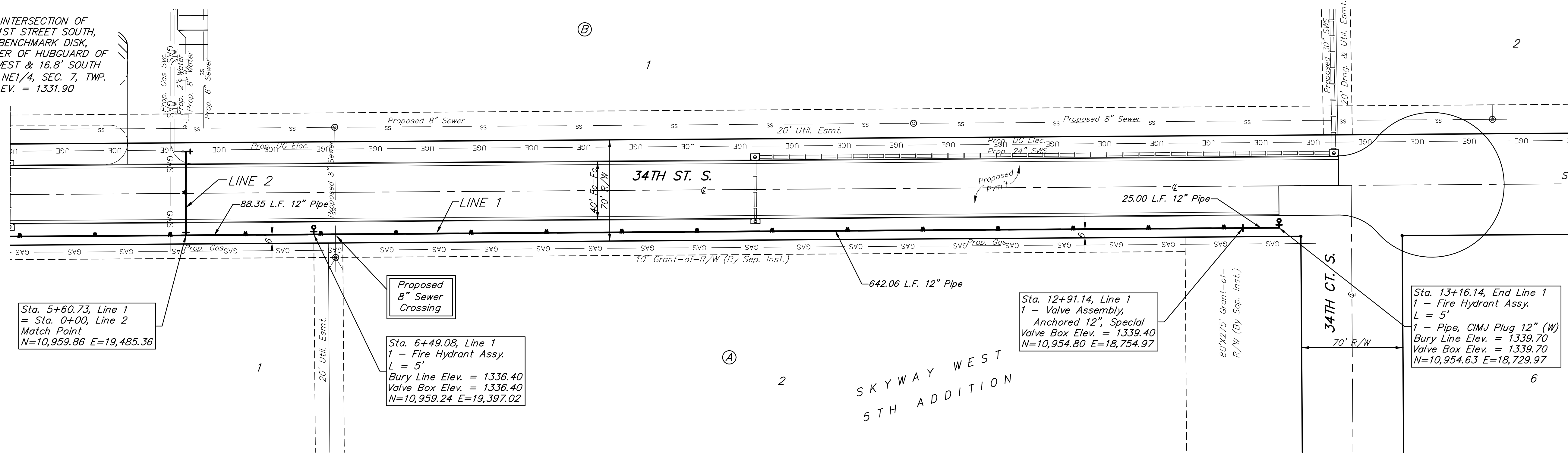


BENCHMARK:
 BM #1: WEST OF INTERSECTION OF
 MAIZE ROAD & 31ST STREET SOUTH,
 CITY OF WICHITA BENCHMARK DISK,
 SOUTHEAST CORNER OF HUBGUARD OF
 R.C.B.C., 330.9' WEST & 16.8' SOUTH
 OF THE NE COR., NE1/4, SEC. 7, TWP.
 28-S, R-1-W. ELEV. = 1331.90
 NAVD88



Sta. 5+60.73, Line 1
 = Sta. 0+00, Line 2
 Match Point
 N=10,959.86 E=19,485.36

Proposed
 8" Sewer
 Crossing

Sta. 6+49.08, Line 1
 1 - Fire Hydrant Assy.
 L = 5'
 Bury Line Elev. = 1336.40
 Valve Box Elev. = 1336.40
 N=10,959.24 E=19,397.02

Sta. 12+91.14, Line 1
 1 - Valve Assembly,
 Anchored 12", Special
 Valve Box Elev. = 1339.40
 N=10,954.80 E=18,754.97

Sta. 13+16.14, End Line 1
 1 - Fire Hydrant Assy.
 L = 5'
 1 - Pipe, CIMJ Plug 12" (W)
 Bury Line Elev. = 1339.70
 Valve Box Elev. = 1339.70
 N=10,954.63 E=18,729.97

