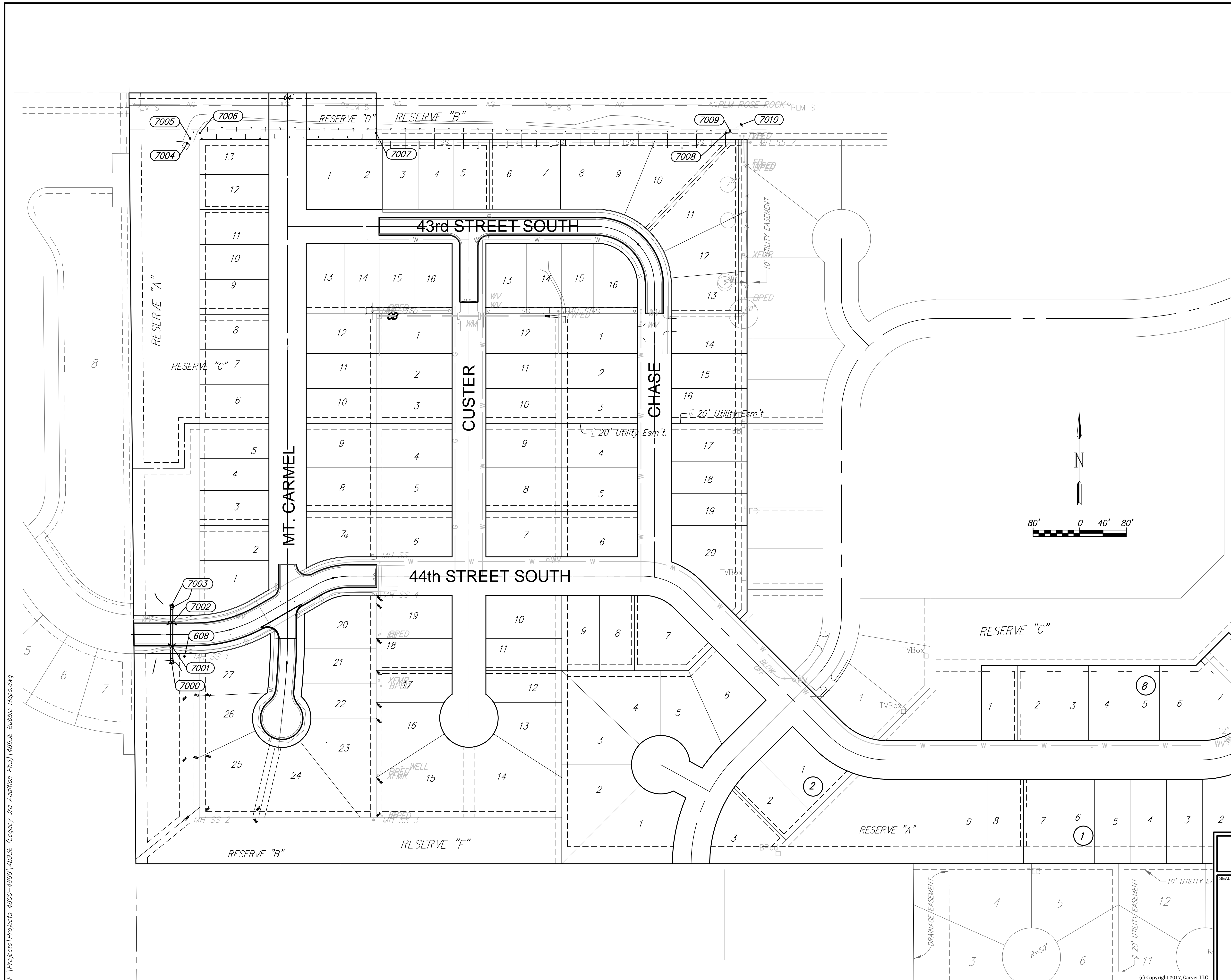


Point Table			
Point #	Northing	Easting	Description
7000	20343.52	17394.99	END SECTION
7001	20373.52	17394.99	TYPE 1A INLET
7002	20412.85	17394.99	TYPE 1A INLET
7003	20443.90	17394.99	END SECTION
7004	21235.80	17421.62	BEGIN DITCH
7005	21243.90	17426.44	PC DITCH
7006	21253.68	17443.63	PT DITCH
7007	21253.68	17745.70	BEGIN FLUME
7008	21253.68	18345.78	FLUME BEND
7009	21257.32	18352.67	END FLUME
7010	21267.59	18372.15	END DITCH



F:\Projects\Projects 4800-4899\4893E (Legacy 3rd Addition Ph.3)\4893E Bubble Maps.dwg

Legacy 3rd Addition Phase 3 SWS Bubble Map

	GARVER 924 N. MAIN WICHITA, KS 67203 316-264-8008 WWW.GARVERUSA.COM		DATE 01/03/2018 DESIGN EG DRAWN DS REVIEW .
	PROJECT NUMBER 472-85404	RB JOB NO. 4893E	DWG. SCALE ...
DRAWING FILE 4893E Bubble Maps [SWS Bubble Map]			

(c) Copyright 2017, Garver LLC