

BILL OF MATERIALS (FOR INFORMATION ONLY)

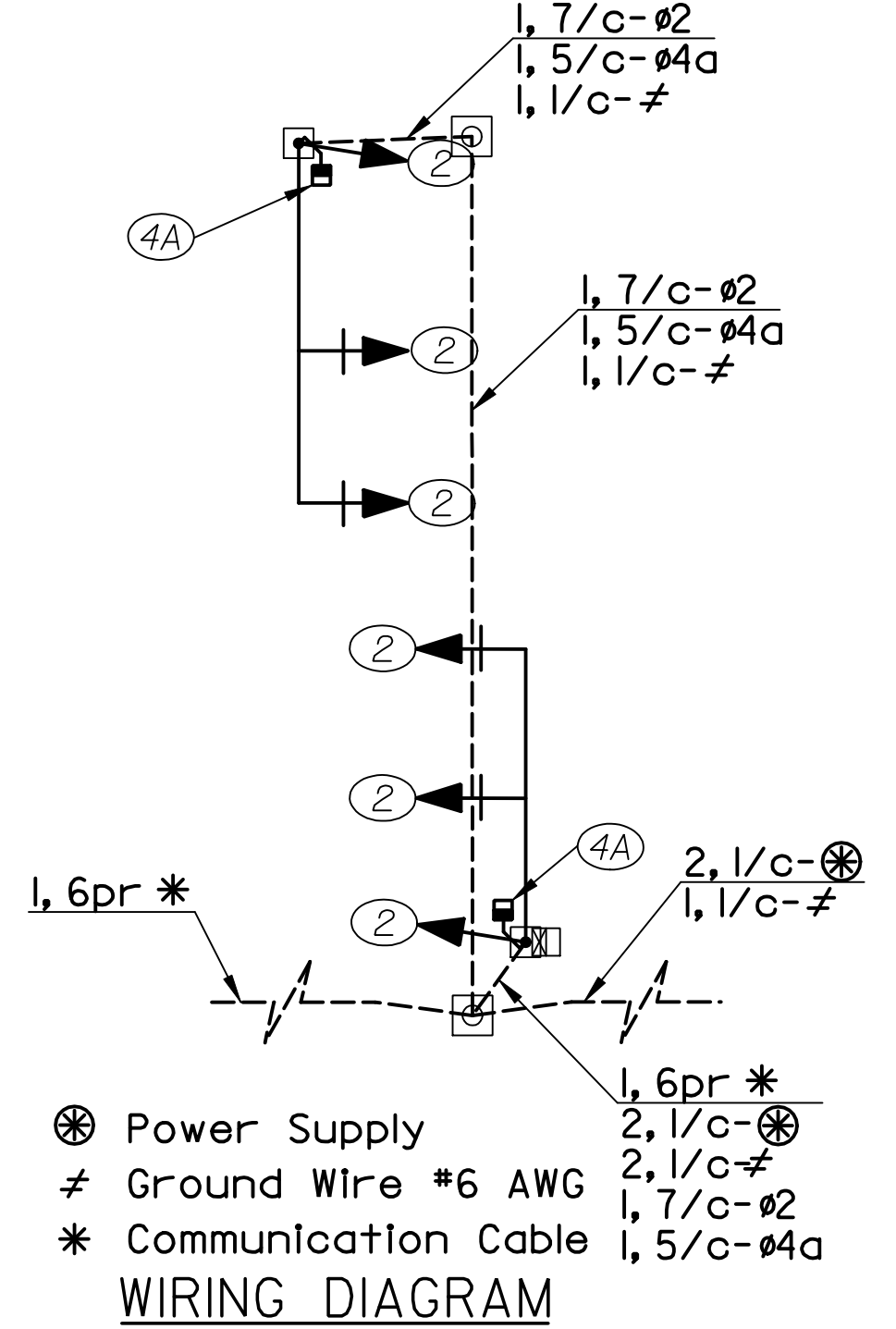
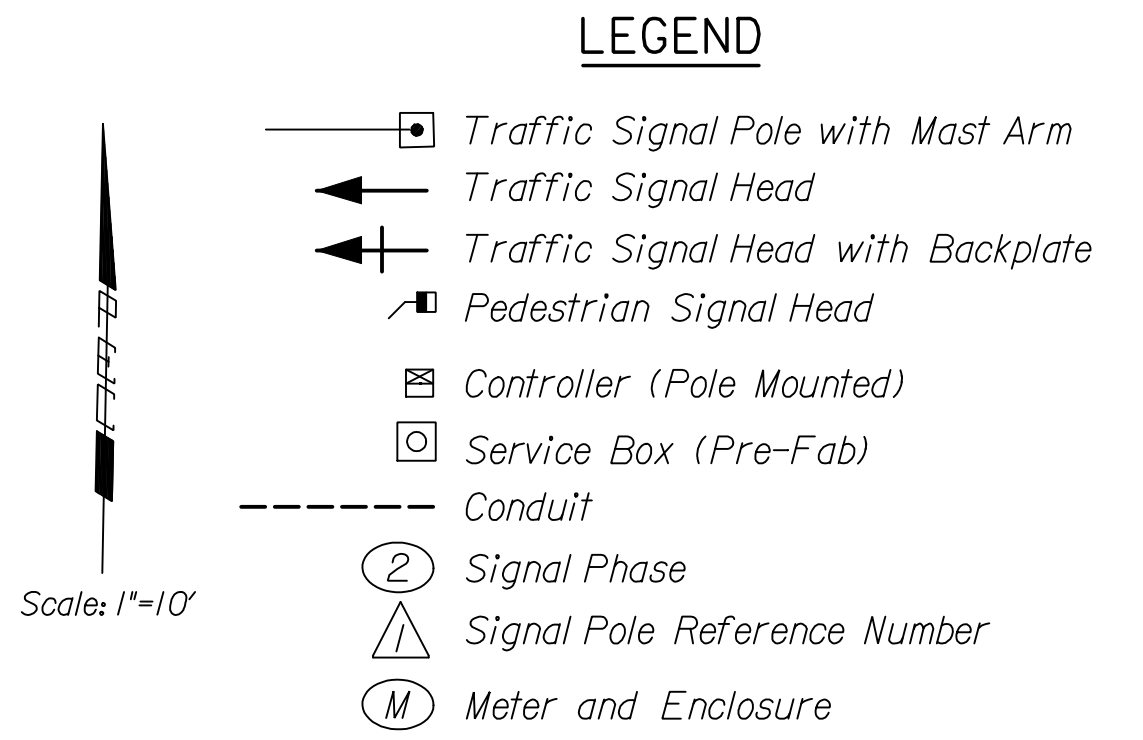
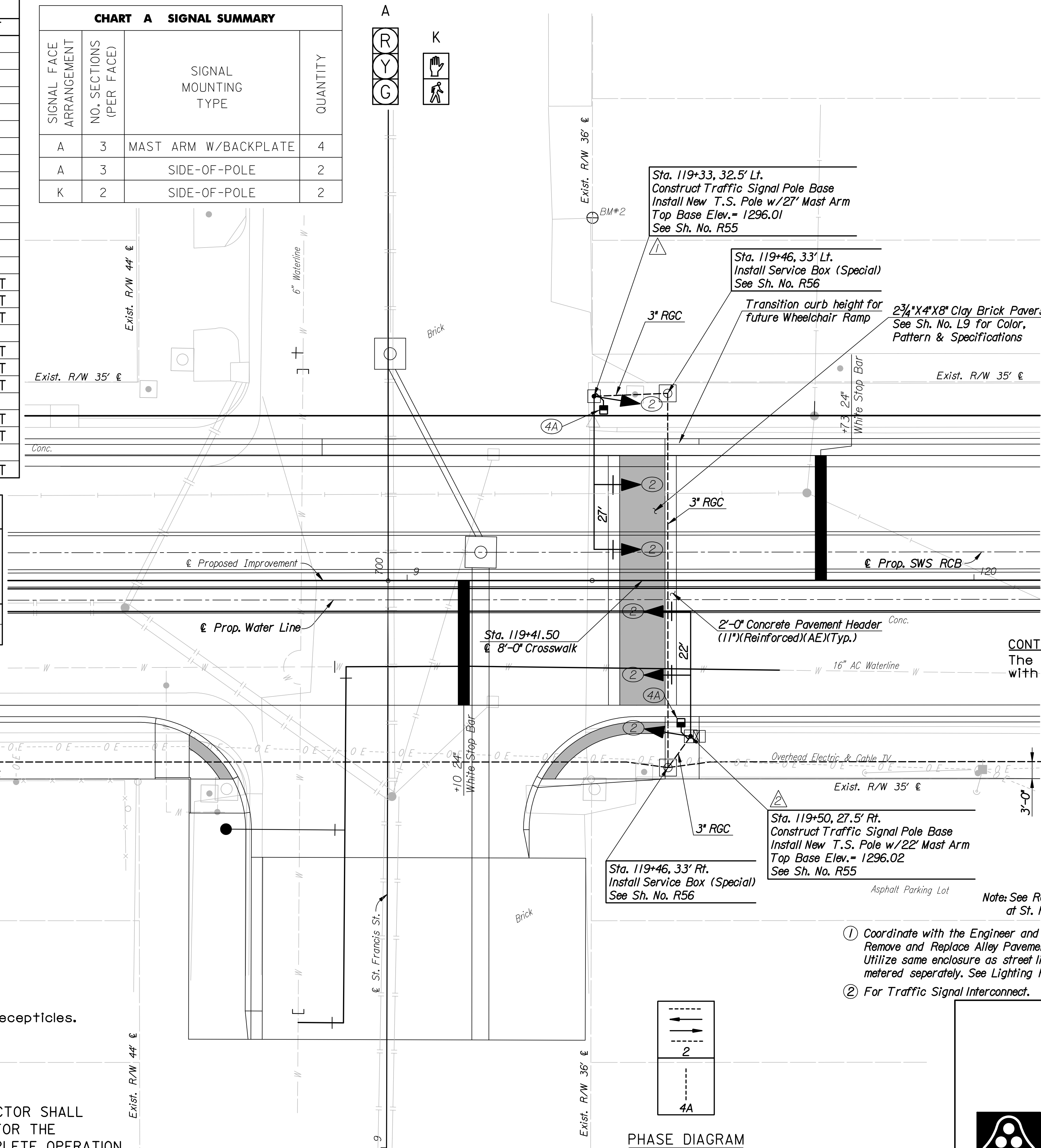
ITEM	QUANT.	UNIT
TRAFFIC SIGNAL HEAD W/MOUNTING HARDWARE	6	EACH
POLE MOUNTED CONTROLLER AND CABINET	1	EACH
L.E.D. PEDESTRIAN SIGNAL LENS	4	EACH
L.E.D. TRAFFIC SIGNAL LENS	18	EACH
TRAFFIC SIGNAL POLE STEEL 20'	2	EACH
TRAFFIC SIGNAL POLE BASE	2	EACH
SERVICE BOX (SPECIAL) (PRE-FAB)	2	EACH
SERVICE ENCLOSURE, 50 AMP.	③ 1	EACH
CIRCUIT BREAKER, TRAFFIC SIGNAL, 30 AMP.	1	EACH
GROUND ROD & CLAMP	2	EACH
6PR COMMUNICATION CABLE	450	LIN FT
SERVICE WIRE NO. 6 AWG 1/C	480	LIN FT
GROUND WIRE NO. 6 AWG 1/C	410	LIN FT
MULTI-CONDUCTOR CABLE NO. 14 AWG 5/C	320	LIN FT
MULTI-CONDUCTOR CABLE NO. 14 AWG 7/C	120	LIN FT
MULTI-CONDUCTOR CABLE NO. 14 AWG 3/C	30	LIN FT
CONDUIT, 2" & FITTINGS RGC	210	LIN FT
CONDUIT, 3" FITTINGS RGC	98	LIN FT
ALLEY PAVEMENT REMOVAL AND REPLACEMENT	50	LIN FT

CHART B TRAFFIC SIGNAL POLES

POLE NO.	POLE HEIGHT	SIGNAL ARM LENGTH	SIGNAL ARM MOUNTING HEIGHT	NO. OF SIGNALS ON ARM	SIGNAL SPACING	QUANT.
①	20'	27'	19'	2	16, 27	1
②	20'	22'	19'	2	11, 22	1

CHART A SIGNAL SUMMARY

SIGNAL FACE ARRANGEMENT	NO. SECTIONS (PER FACE)	SIGNAL MOUNTING TYPE	QUANTITY
A	3	MAST ARM W/BACKPLATE	4
A	3	SIDE-OF-POLE	2
K	2	SIDE-OF-POLE	2

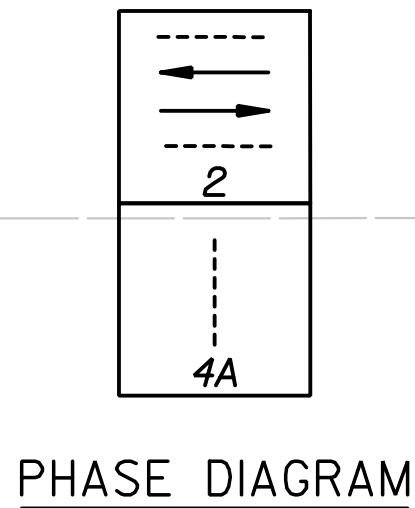


CONTROLLER DESCRIPTION
The traffic signal controller shall comply with requirements for a 170 type controller.

- Coordinate with the Engineer and Westar Energy for Enclosure Panel location. Remove and Replace Alley Pavement as required to complete installation. Utilize same enclosure as street light and receptacles. Traffic Signal to be metered separately. See Lighting Plans.
- For Traffic Signal Interconnect.

③ Utilize same enclosure as street lights and receptacles. Traffic Signal to be metered separately. See Lighting Plans.

NOTE :
THE TRAFFIC SIGNAL SYSTEM SHALL BE COMPLETE AND THE CONTRACTOR SHALL FURNISH AND INSTALL ALL EQUIPMENT AND MATERIALS NECESSARY FOR THE SATISFACTORY OPERATION OF ELECTRICAL APPARATUS AND FOR COMPLETE OPERATION OF THE TRAFFIC SIGNAL SYSTEM WHETHER SPECIFICALLY MENTIONED OR NOT.



No.	Revision	By	Date
WATERMAN STREET			
TRAFFIC SIGNAL PLAN			
WATERMAN AND ST. FRANCIS			
JAMES L. ARMOUR, P.E.-CITY ENGINEER CITY OF WICHITA PROJECT NO. 468-84167			
Professional Engineering Consultants, P.A.			
303 S. TOPEKA • WICHITA, KANSAS 67202 316-262-2691 • FAX 316-262-3003			
Designed by	WDH	Job No.	06237
Drawn by	DRP	Date	March, 2007
			Sh. R52-R of R111

DSNR: WDH OPER: DRP SCALE: 1"=10' I:/2006/06237/SIGNAL/06237-000-SIGNALSTFRANCISREVISED.DGN LAST REV: 3-15-2007 BY: drp