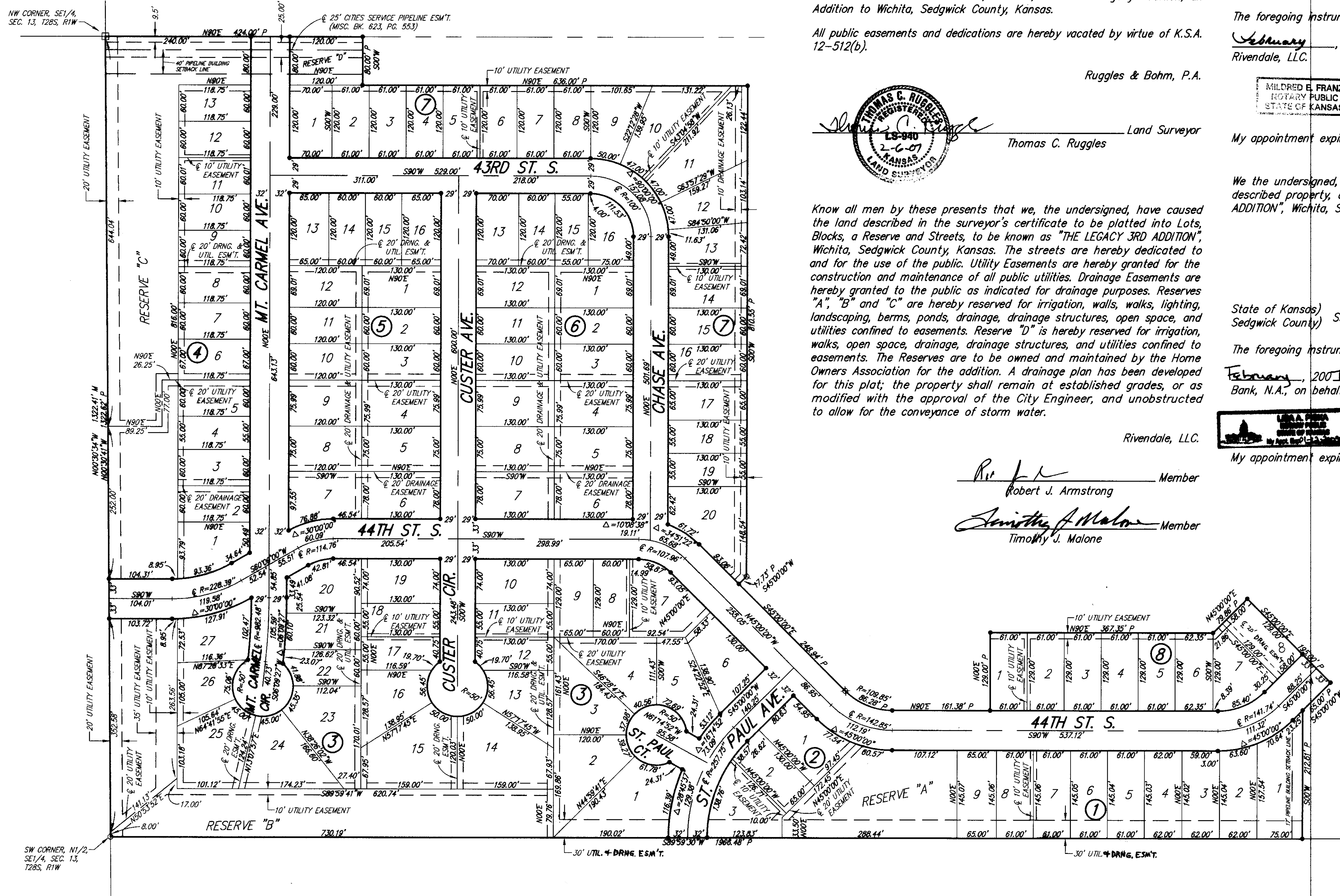


THE LEGACY 3RD ADDITION

A replat of part of The Legacy Addition,
Wichita, Sedgwick County, Kansas



State of Kansas)
Sedgwick County) SS

We, Ruggles & Bohm, P.A., Land Surveyors in aforesaid county and state, do hereby certify that, under the supervision of the undersigned, we have surveyed and platted "THE LEGACY 3RD ADDITION", Wichita, Sedgwick County, Kansas, and that the accompanying plat is a true and correct exhibit of the property surveyed, described as follows:

Lots 1, 2, 3, 4, 5, 6, 7, 8, 9, 10 and 11, Block 1; Lots 1, 2, 3, 4, 5, 6, 7, 8, 9, 10, 11, 12, 13, 14, 15, 16, 17, 18, 19, 20, 21, 22, 23, 24, 25, 26, 27, 28, 29, 30, 31, 32, 33, 34, 35, 36, 37, 38, 39, 40, 41, 42, 43, 44, 45 and 46, Block 2; Lots 1, 2, 3, 4, 5, 6, 7, 8, 9, 10, 11, 12, 13, 13, 14, 15, 16, 17, 18, 19, 20, 21, 22, 23 and 24, Block 3; Lots 1, 2, 3 and 4, Block 4; Lots 1, 2, 3, 4, 5, 6, 7 and 8, Block 5; Lots 1, 2, 3, 4, 5, 6 and 7, Block 7; and Reserves A, E, F and that part of Reserve B lying west of the extended east line of Lot 1, Block 2; all in The Legacy Addition, an Addition to Wichita, Sedgwick County, Kansas.

All public easements and dedications are hereby vacated by virtue of K.S.A. 12-512(b).

Ruggles & Bohm, P.A.

Thomas C. Ruggles
Thomas C. Ruggles
Land Surveyor

Know all men by these presents that we, the undersigned, have caused the land described in the surveyor's certificate to be platted into Lots, Blocks, a Reserve and Streets, to be known as "THE LEGACY 3RD ADDITION", Wichita, Sedgwick County, Kansas. The streets are hereby dedicated to and for the use of the public. Utility Easements are hereby granted for the construction and maintenance of all public utilities. Drainage Easements are hereby granted to the public as indicated for drainage purposes. Reserves "A", "B" and "C" are hereby reserved for irrigation, walls, walks, lighting, landscaping, berms, ponds, drainage, drainage structures, open space, and utilities confined to easements. Reserve "D" is hereby reserved for irrigation, walks, open space, drainage, drainage structures, and utilities confined to easements. The Reserves are to be owned and maintained by the Home Owners Association for the addition. A drainage plan has been developed for this plat; the property shall remain at established grades, or as modified with the approval of the City Engineer, and unobstructed to allow for the conveyance of storm water.

Rivendale, LLC.

Robert J. Armstrong Member
Timothy J. Malone Member

State of Kansas)
Sedgwick County) SS

The foregoing instrument acknowledged before me, this 9th day of February, 2007, by Robert J. Armstrong, Member, on behalf of Rivendale, LLC.

Mildred E. Franz
Mildred E. Franz
Notary Public

State of Kansas)
Sedgwick County) SS

The foregoing instrument acknowledged before me, this 1st day of February, 2007, by Timothy J. Malone, Member, on behalf of Rivendale, LLC.

Mildred E. Franz
Mildred E. Franz
Notary Public

We the undersigned, holders of a mortgage on a portion of the above described property, do hereby consent to this plat of "THE LEGACY 3RD ADDITION", Wichita, Sedgwick County, Kansas.

Brian Hudson
BRIAN HUDSON
VICE PRESIDENT

State of Kansas)
Sedgwick County) SS

The foregoing instrument acknowledged before me this 13th day of February, 2007, by Brian Hudson, Vice President of Legacy Bank, N.A., on behalf of the Bank.

Brian Hudson
Notary Public

This plat of "THE LEGACY 3RD ADDITION", Wichita, Sedgwick County, Kansas, has been submitted to and approved by the Wichita-Sedgwick County Metropolitan Area Planning Commission, Wichita, Kansas.

Dated this 7th day of December, 2006.

Wichita-Sedgwick County Metropolitan Area Planning Commission
John Schlegel
Secretary

This plat approved and all dedications shown hereon accepted by the City Council of the City of Wichita, Kansas, this 15 day of March, 2007.

At the Direction of the City Council
Carlos Moyas
Mayor
Karen Sublett
City Clerk

Reviewed in accordance with K.S.A. 17-2005 on this 20th day of February, 2007.

Tricia L. Ruppel
Deputy County Surveyor
Sedgwick County Kansas

Entered on transfer record this 16th day of August, 2007.

Don Brace
County Clerk

State of Kansas)
Sedgwick County) SS

This is to certify that this plat has been filed for record in the office of the Register of Deeds, this 16th day of August, 2007, at 12:39:35 o'clock P.M., and is duly recorded.

Long Buckinghan
Register of Deeds
Tonya Buckingham
Deputy

BLOCK	LOT NO.	ELEVATION (N.G. VD.)
1	9	1280
2	1-3	1280
3	25-27	1282
4	1-13	1282
8	1-8	1281

