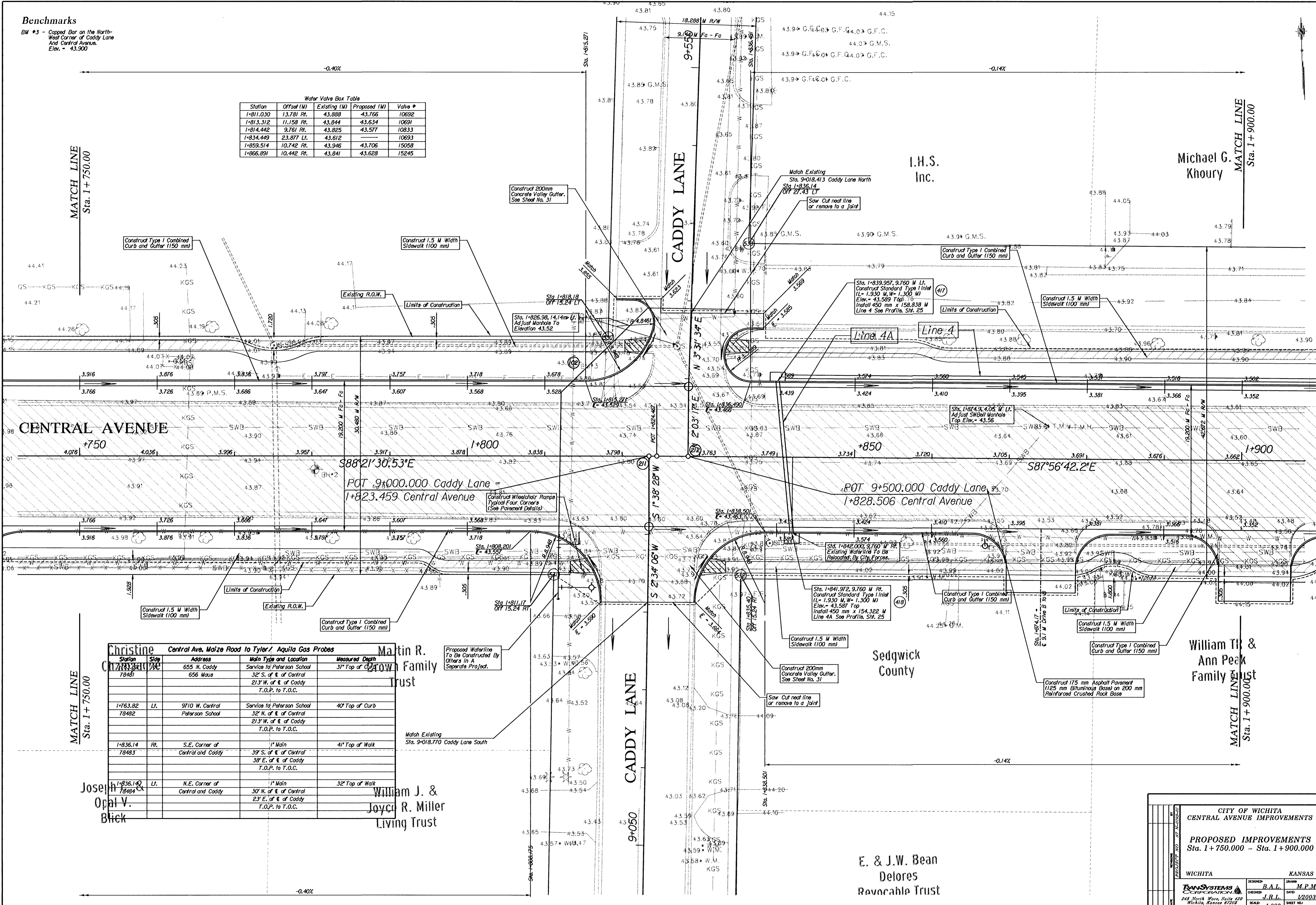


Benchmarks

BM #3 - Capped Bar on the North-West Corner of Caddy Lane and Central Avenue.
Elev. = 43.900

Water Valve Box Table

Station	Offset (W)	Existing (W)	Proposed (W)	Valve #
1+811.030	13.781 Rt.	43.889	43.766	10692
1+813.312	11.158 Rt.	43.844	43.634	10691
1+814.442	9.761 Rt.	43.825	43.577	10833
1+834.449	23.877 Lt.	43.612	—	10693
1+859.514	10.742 Rt.	43.946	43.706	15058
1+866.891	10.442 Rt.	43.841	43.628	15245



Station	Side	Address	Main Type and Location	Measured Depth
1+784.81	Rt.	655 N. Caddy	Service to Peterson School	31" Top of Curb
	Rt.	656 Maus	32" S. of E. of Central	21 3/4" W. of E. of Caddy
			T.O.P. to T.O.C.	
1+763.82	Lt.	9710 W. Central	Service to Peterson School	40" Top of Curb
78482		Peterson School	32" N. of E. of Central	21 3/4" W. of E. of Caddy
			T.O.P. to T.O.C.	
1+836.14	Rt.	S.E. Corner of Central and Caddy	1" Main	41" Top of Walk
78483			39" S. of E. of Central	38" E. of E. of Caddy
			T.O.P. to T.O.C.	
1+836.14	Lt.	N.E. Corner of Central and Caddy	1" Main	32" Top of Walk
78484			30" N. of E. of Central	23" E. of E. of Caddy
			T.O.P. to T.O.C.	

CITY OF WICHITA
CENTRAL AVENUE IMPROVEMENTS

PROPOSED IMPROVEMENTS
Sta. 1 + 750.000 - Sta. 1 + 900.000

WICHITA	KANSAS
DESIGNED BY: B.A.L.	DRAWN BY: M.P.M.
CHECKED BY: J.R.L.	DATE: 12/20/03
SCALE: 1:200	SHEET NO. 11

MATCH LINE
Sta. 1 + 750.00

MATCH LINE
Sta. 1 + 900.00

MATCH LINE
Sta. 1 + 750.00

MATCH LINE
Sta. 1 + 900.00

L.H.S. Inc.

Michael G. Khoury

Sedgwick County

William T. & Ann Peak Family Trust

E. & J.W. Bean Delores Ravonchale Trust