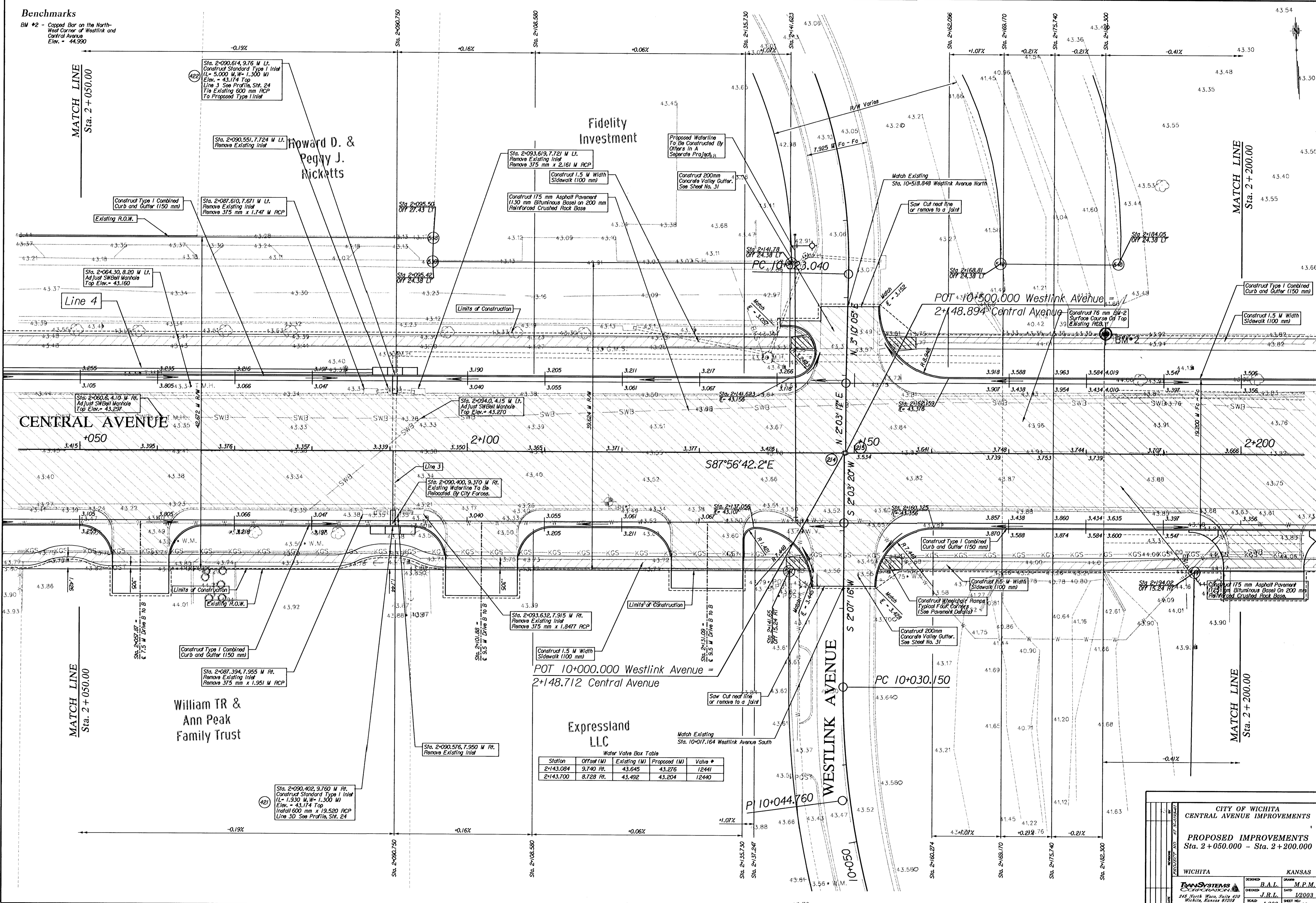


Benchmarks

BM #2 - Capped Bar on the North-West Corner of Westlink and Central Avenue
Elev. = 43.90



Water Valve Box Table

Station	Offset (M)	Existing (M)	Proposed (M)	Valve #
2+143.084	9.740 Rt.	43.645	43.276	12441
2+143.700	8.728 Rt.	43.492	43.204	12440

CITY OF WICHITA
CENTRAL AVENUE IMPROVEMENTS

PROPOSED IMPROVEMENTS
Sta. 2+050.000 - Sta. 2+200.000

WICHITA	KANSAS
DESIGNED: B.A.L.	DRAWN: M.P.M.
CHECKED: J.R.L.	DATE: 1/2003
SCALE: 1:200	SHEET NO: 13

TRANSYSTEMS
245 North Wood, Suite 400
Wichita, Kansas 67209