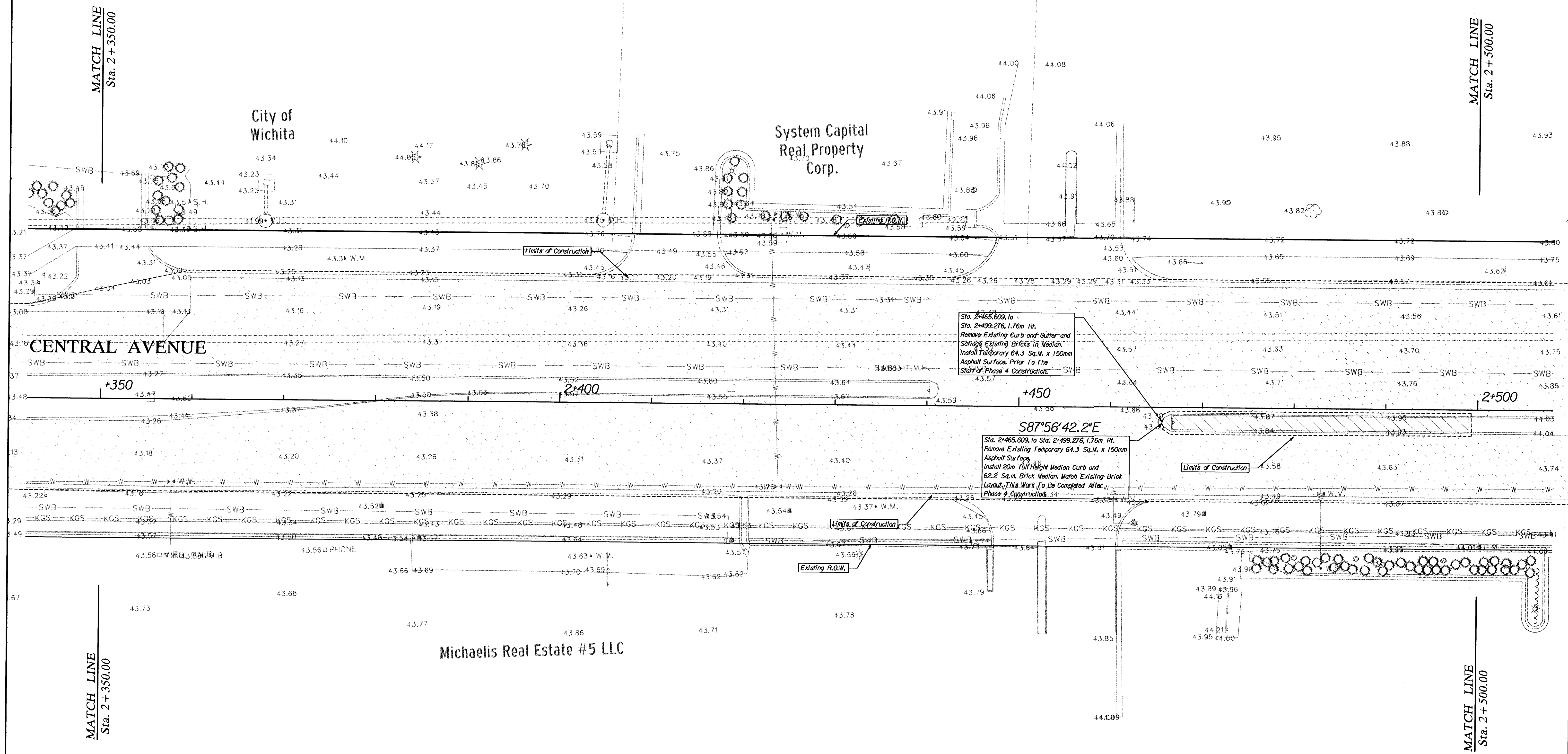


Water Valve Box Table				
Station	Offset (M)	Existing (M)	Proposed (M)	Valve #
2+357.798	8.997 Rt.	43.032	43.032	
2+423.864	8.996 Rt.	43.254	43.254	
2+460.384	12.600 Lt.	43.363		



Sta. 2+465.609 to Sta. 2+499.276, 1.76m Rt.  
 Remove Existing Curb and Gutter and Salvage Existing Bricks in Median.  
 Install Temporary 64.3 Sq.M. x 150mm Asphalt Surface. Prior To The Start of Phase 4 Construction.

S87°56'42.2"E  
 Sta. 2+465.609 to Sta. 2+499.276, 1.76m Rt.  
 Remove Existing Temporary 64.3 Sq.M. x 150mm Asphalt Surface.  
 Install 20m Full Height Median Curb and 62.2 Sq.m. Brick Median. Match Existing Brick Layout. This Work To Be Completed After Phase 4 Construction.

CITY OF WICHITA CENTRAL AVENUE IMPROVEMENTS	
PROPOSED IMPROVEMENTS Sta. 2+350.000 - Sta. 2+500.000	
WICHITA	KANSAS
DESIGNED: B.A.L.	DRAWN: M.P.M.
CHECKED: J.R.L.	DATE: 12/003
SCALE: 1:200	SHEET NO: 15

TRANS SYSTEMS  
 245 North Main, Suite 400  
 Wichita, Kansas 67202