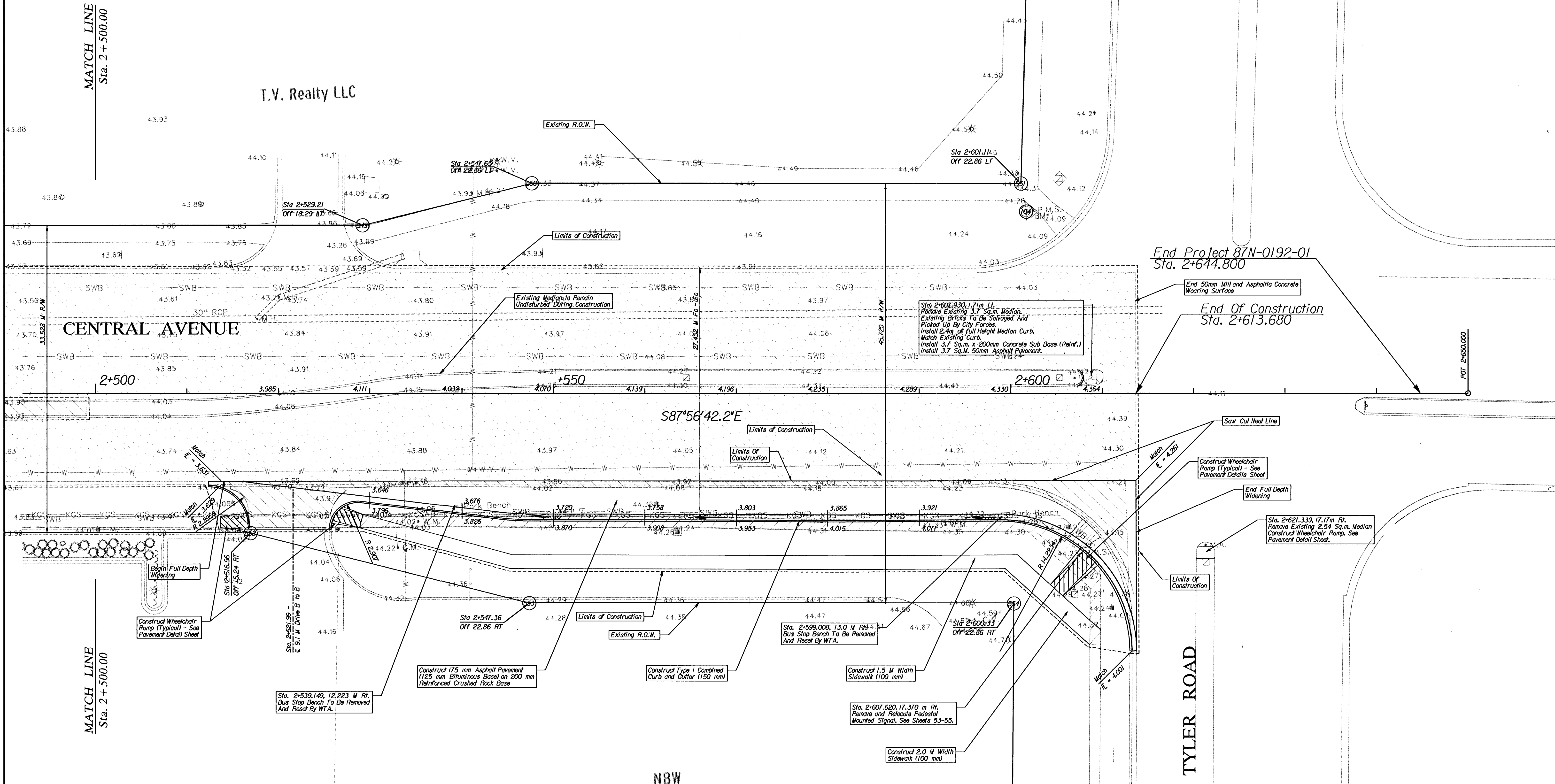


**Benchmarks**

BM #1 - Capped Bar on the North-West Corner of Tyler And Central Avenue  
Elev. = 44.210

Water Valve Box Table

Station	Offset (M)	Existing (M)	Proposed (M)	Valve #
2+533.788	9.781 Rt.	43.760	43.749	21897
2+541.115	8.343 Rt.	43.838	43.749	—



CITY OF WICHITA CENTRAL AVENUE IMPROVEMENTS	
PROPOSED IMPROVEMENTS Sta. 2+500.000 - Sta. 2+623.352	
WICHITA	KANSAS
DESIGNED BY <b>B.A.L.</b>	DRAWN BY <b>M.P.M.</b>
CHECKED BY <b>J.R.L.</b>	DATE <b>1/2003</b>
SCALE <b>1:200</b>	SHEET NO. <b>16</b>