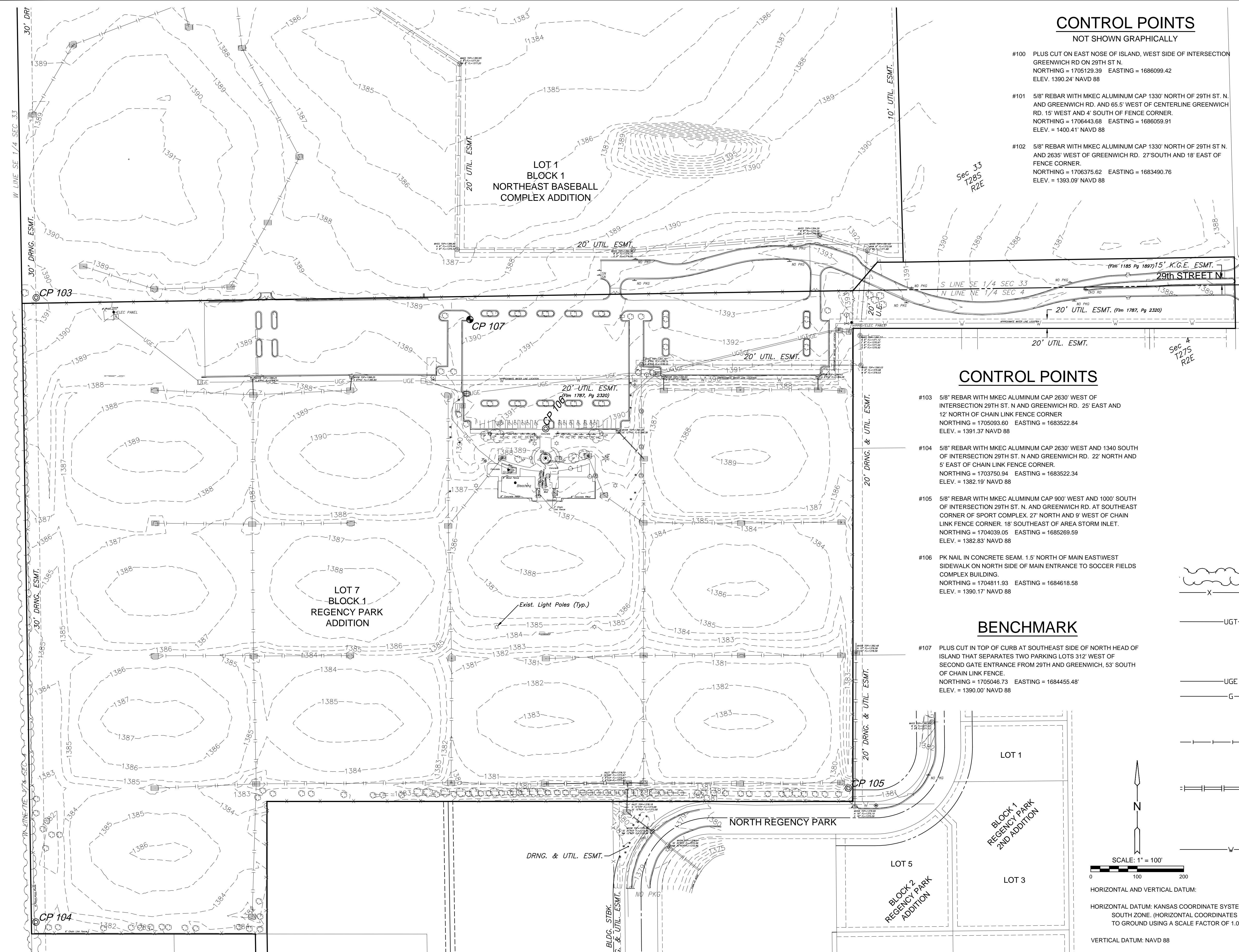


J:\PROJECTS\2017\171010587_COW_STRYKER_170567_CAD\SHOTS\505_OVAL\TITLE\170567-05-0800.DWG
 J:\PROJECTS\2017\171010587_COW_STRYKER_170567_CAD\SHOTS\505_OVAL\TITLE\170567-05-0800.DWG
 PLOTTED: Wednesday, January 10, 2018 @ 08:36AM



CONTROL POINTS

NOT SHOWN GRAPHICALLY

- #100 PLUS CUT ON EAST NOSE OF ISLAND, WEST SIDE OF INTERSECTION GREENWICH RD ON 29TH ST N.
NORTHING = 1705129.39 EASTING = 1686099.42
ELEV. = 1390.24' NAVD 88
- #101 5/8" REBAR WITH MKEC ALUMINUM CAP 1330' NORTH OF 29TH ST. N. AND GREENWICH RD. AND 65.5' WEST OF CENTERLINE GREENWICH RD. 15' WEST AND 4' SOUTH OF FENCE CORNER.
NORTHING = 1706443.68 EASTING = 1686059.91
ELEV. = 1400.41' NAVD 88
- #102 5/8" REBAR WITH MKEC ALUMINUM CAP 1330' NORTH OF 29TH ST. N. AND 2635' WEST OF GREENWICH RD. 27'SOUTH AND 18' EAST OF FENCE CORNER.
NORTHING = 1706375.62 EASTING = 1683490.76
ELEV. = 1393.09' NAVD 88

CONTROL POINTS

- #103 5/8" REBAR WITH MKEC ALUMINUM CAP 2630' WEST OF INTERSECTION 29TH ST. N AND GREENWICH RD. 25' EAST AND 12' NORTH OF CHAIN LINK FENCE CORNER
NORTHING = 1705093.60 EASTING = 1683522.84
ELEV. = 1391.37' NAVD 88
- #104 5/8" REBAR WITH MKEC ALUMINUM CAP 2630' WEST AND 1340 SOUTH OF INTERSECTION 29TH ST. N AND GREENWICH RD. 22' NORTH AND 5' EAST OF CHAIN LINK FENCE CORNER.
NORTHING = 1703750.94 EASTING = 1683522.34
ELEV. = 1382.19' NAVD 88
- #105 5/8" REBAR WITH MKEC ALUMINUM CAP 900' WEST AND 1000' SOUTH OF INTERSECTION 29TH ST. N. AND GREENWICH RD. AT SOUTHEAST CORNER OF SPORT COMPLEX. 27' NORTH AND 9' WEST OF CHAIN LINK FENCE CORNER. 18' SOUTHEAST OF AREA STORM INLET.
NORTHING = 1704039.05 EASTING = 1685269.59
ELEV. = 1382.83' NAVD 88
- #106 PK NAIL IN CONCRETE SEAM. 1.5' NORTH OF MAIN EASTWEST SIDEWALK ON NORTH SIDE OF MAIN ENTRANCE TO SOCCER FIELDS COMPLEX BUILDING.
NORTHING = 1704811.93 EASTING = 1684618.58
ELEV. = 1390.17' NAVD 88

BENCHMARK

- #107 PLUS CUT IN TOP OF CURB AT SOUTHEAST SIDE OF NORTH HEAD OF ISLAND THAT SEPARATES TWO PARKING LOTS 312' WEST OF SECOND GATE ENTRANCE FROM 29TH AND GREENWICH, 53' SOUTH OF CHAIN LINK FENCE.
NORTHING = 1705046.73 EASTING = 1684455.48'
ELEV. = 1390.00' NAVD 88

LEGEND

- △ - SECTION CORNER
- - SURVEY MONUMENT
- ⊙ - BENCHMARK
- ♿ - HANDICAP PARKING SPACES
- ✱ 6IN - TREE AND DIAMETER
- ✱ 3IN - TREE AND DIAMETER
- SN - SIGN
- X—X— - GATE
- X—X— - ROW OF TREES
- X—X— - FENCE
- UGT— - TELEPHONE RISER
- UGT— - UNDERGROUND TELEPHONE LINE
- ⊙ - LIGHT POLE
- ⊠ - ELECTRICAL CONTROL BOX
- ⊠ - ELECTRIC TRANSFORMER
- UGE— - UNDERGROUND ELECTRIC LINE
- G— - GAS LINE
- ⊙ - SANITARY SEWER MANHOLE
- ⊙ - CLEANOUT
- S—S— - SANITARY SEWER LINE
- ⊙ - STORM WATER MANHOLE
- S—S— - STORM SEWER PIPE
- ⊙ - FIRE HYDRANT
- ⊙ - WATER VALVE
- ⊙ - WATER SPIGOT
- W— - WATER LINE

SCALE: 1" = 100'

HORIZONTAL DATUM: KANSAS COORDINATE SYSTEM 1983
SOUTH ZONE. (HORIZONTAL COORDINATES MODIFIED TO GROUND USING A SCALE FACTOR OF 1.000120014)
VERTICAL DATUM: NAVD 88



GRADING & UTILITIES PLANS FOR
STRYKER SPORTS
 WICHITA, KANSAS



©2018 MKEC Engineering All Rights Reserved
 These drawings and their contents, including, but not limited to, all concepts, designs, & ideas are the exclusive property of MKEC Engineering (MKEC), and may not be used or reproduced in any way without the express consent of MKEC.

EXISTING CONDITIONS PLAN	
PROJECT NO.	170567
DATE	01-10-18
SCALE	1"=100'
DESIGNED	DRAWN
CL	DN
CHECKED	CL
NO.	REVISION
0	ISSUE FOR CONST.
01-10-18	DATE
SHEET NO.	
03 OF 70	