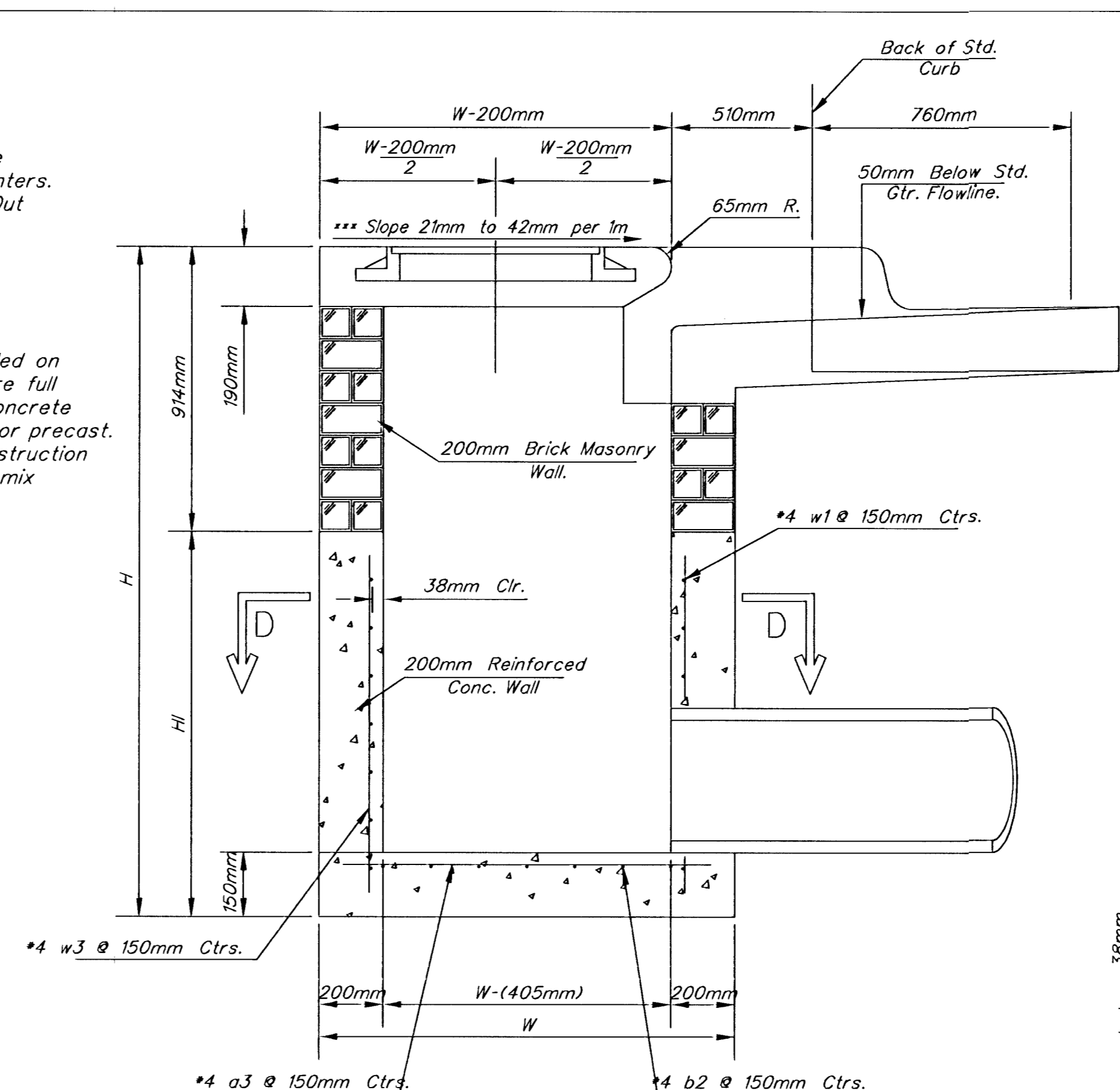
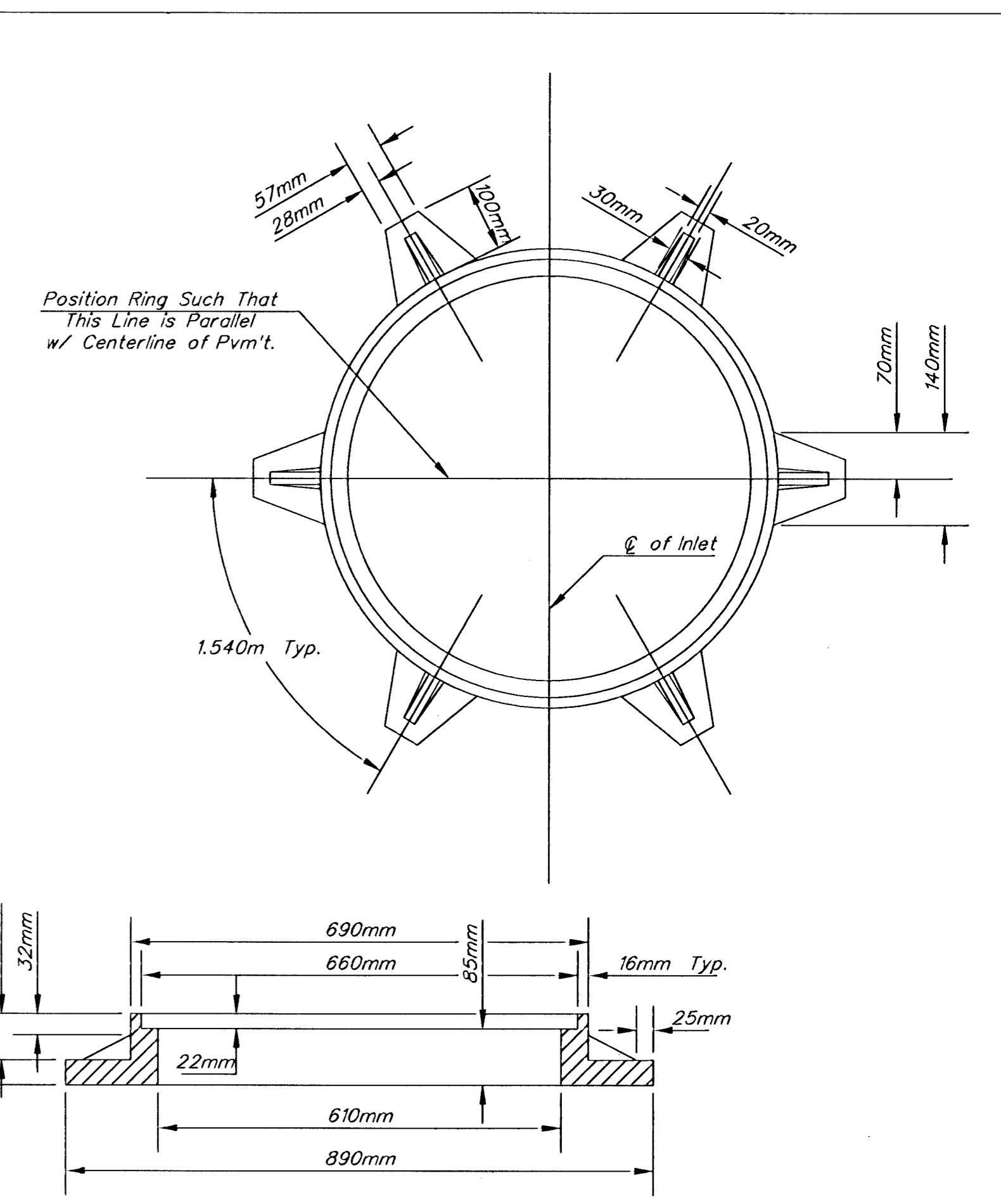


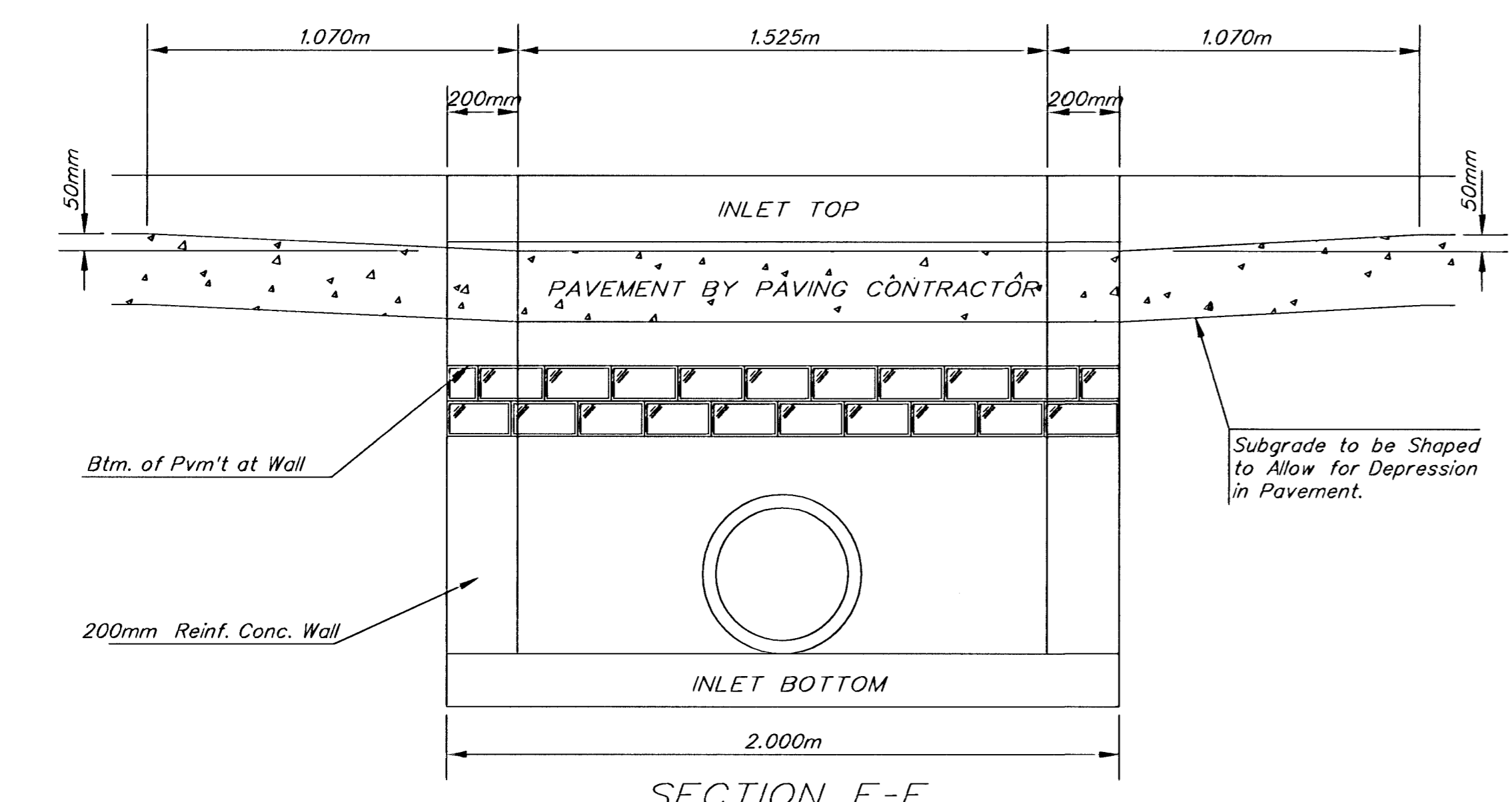
PLAN



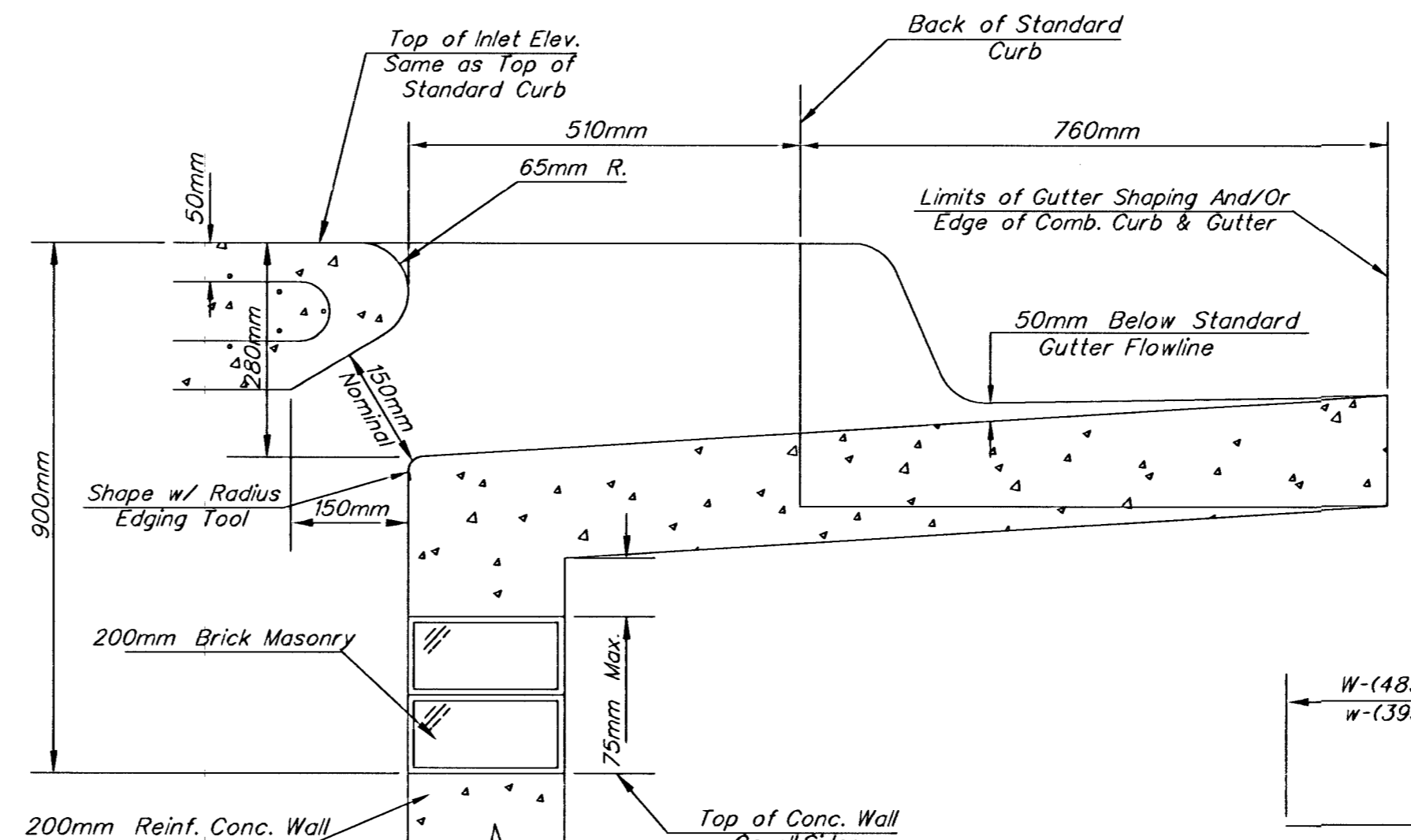
SECTION A-A



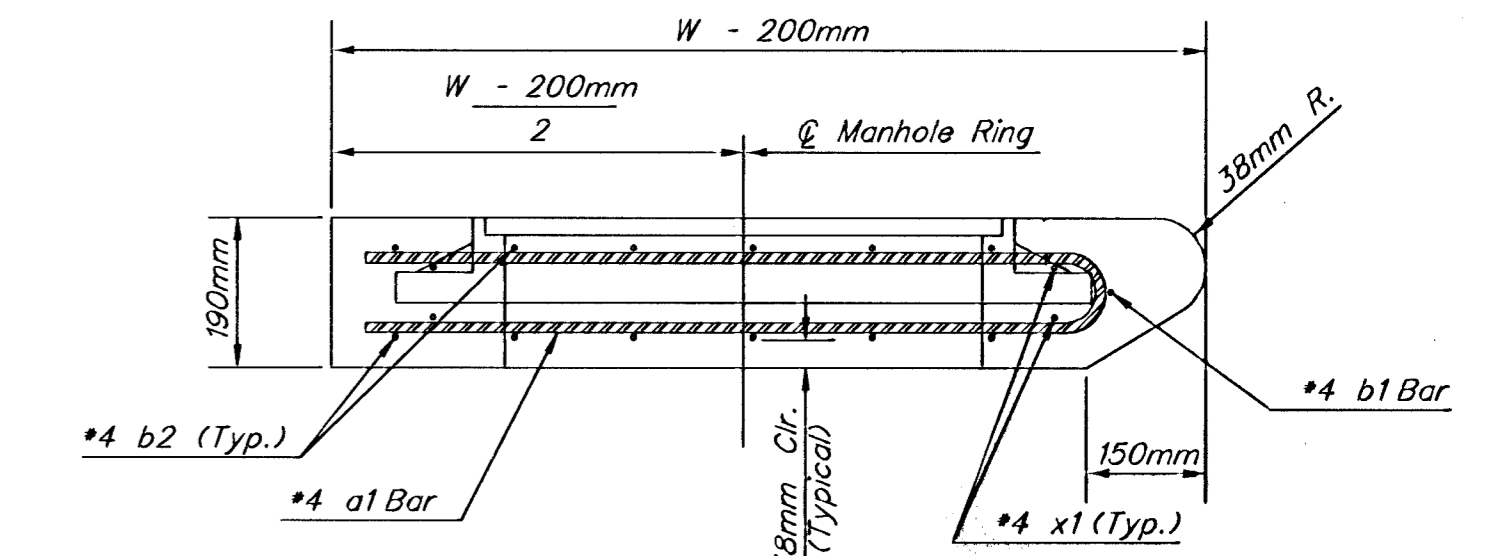
MANHOLE RING AND COVER



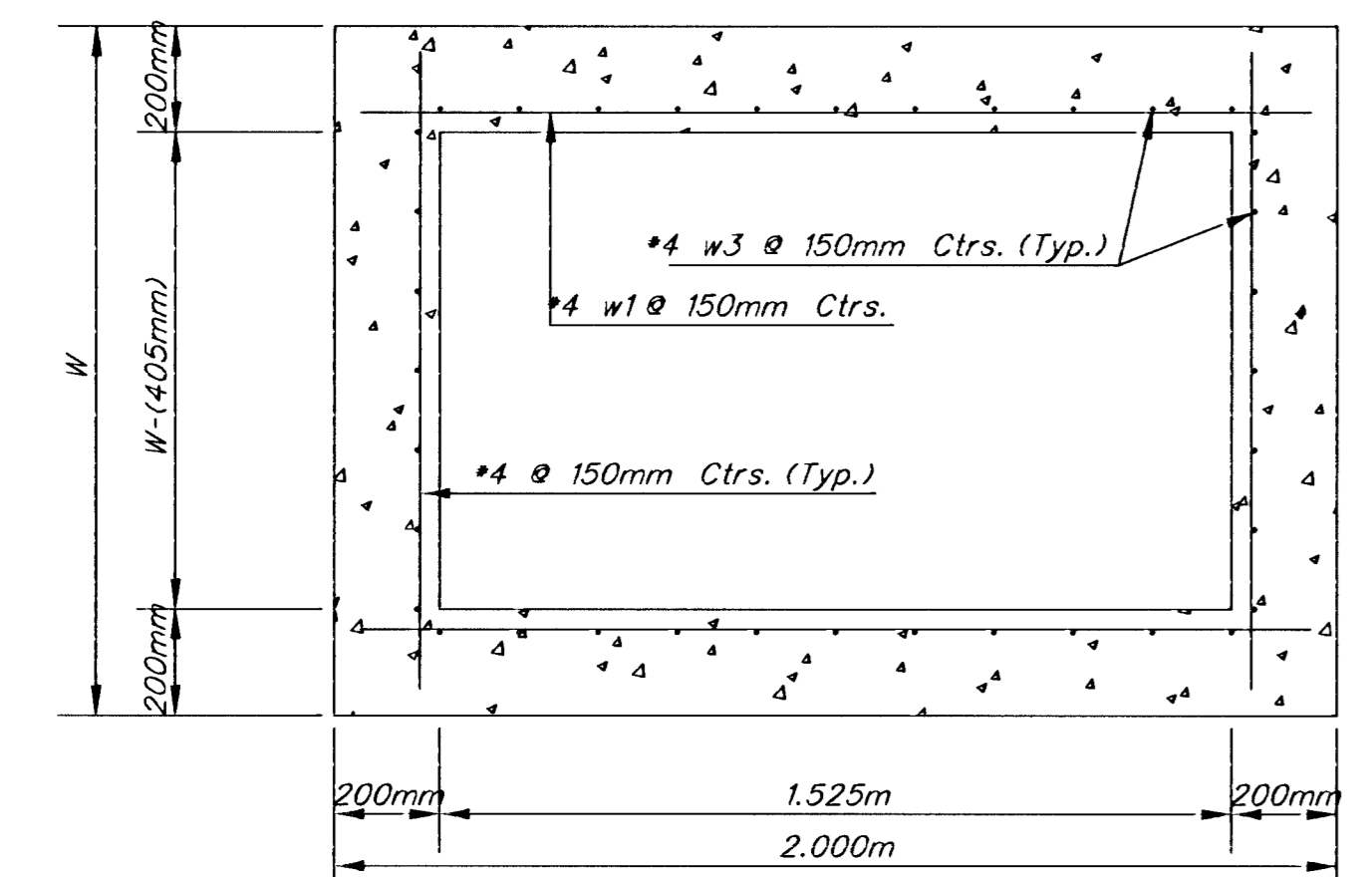
SECTION E-E



SECTION B-B



SECTION A-A



SECTION D-D

NOTE: Contractor shall have the option of constructing 200MM brick masonry walls between the concrete inlet base and top on this inlet when W-1.930M and H-2.135M or less.

Additional curb and gutter construction necessary to connect set-back inlet to pavement will be paid for at the unit price bid for each inlet hookup.

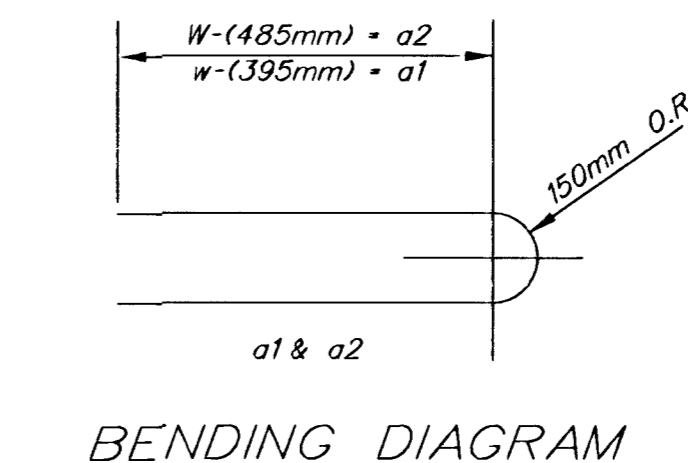
Inlet invert shall be shaped with 8 sack sand mix concrete to create flow channels and to increase hydraulic efficiency such that the inlet will be self-cleaning between all inlet and/or outlet pipes.

The ends of all pipes installed in inlets shall be cut off flush with the inside face of the inlet wall

PRECAST SLAB AND FLOOR REINFORCING											
		W - 1.320M		W - 1.625M		W - 1.930M		W - 2.235M		W - 2.540M	
MARK	SIZE	NO.	LENGTH	NO.	LENGTH	NO.	LENGTH	NO.	LENGTH	NO.	LENGTH
a1	#4	6	2.000M	6	2.620M	6	3.225M	6	3.835M	6	4.445M
a2	#4	4	1.830M	4	2.440M	4	3.050M	4	3.660M	4	4.270M
a3	#4	13	1.245M	13	1.550M	13	1.855M	13	2.160M	13	2.465M
b1	#4	1	1.450M	1	1.450M	1	1.450M	1	1.450M	1	1.450M
b2	#4	23	1.855M	29	1.855M	35	1.855M	41	1.855M	47	1.855M
x1	#4	8	1.170M	8	1.270M	8	1.370M	8	1.475M	8	1.575M

WALL REINFORCING											
		W - 1.320M		W - 1.625M		W - 1.930M		W - 2.235M		W - 2.540M	
MARK	SIZE	NO.	LENGTH	NO.	LENGTH	NO.	LENGTH	NO.	LENGTH	NO.	LENGTH
w1	#4	①	1.855M	①	1.855M	①	1.855M	①	1.855M	①	1.855M
w2	#4	①	1.245M	①	1.550M	①	1.855M	①	2.160M	①	2.465M
w3	#4	32	②	36	②	40	②	44	②	48	②

* Field Bend or Cut Reinforcing as Required for Clearance.
 ① (H1 - 305MM) (H1 - 535MM) Rounded down to nearest 150MM
 ② H1 - 75MM



BENDING DIAGRAM

STANDARD CURB INLET PRECAST TOPS				
W	PRE-CAST TOP SIZE	PIPE SIZE	Cu.M.CONC.	
1.320m	1.120m 1.930m 2.290m	535mm" & SMALLER	0.290	
1.625m	1.422m 1.930m 2.290m	600mm & 790mm	0.390	
1.930m	1.727m 1.930m 2.290m	900mm & 1050mm	0.490	
2.235m	2.032m 1.930m 2.290m	1250mm & 1375mm	0.590	
2.540m	2.337m 1.930m 2.290m	1525mm & 1675mm	0.690	

THE CITY OF WICHITA
CITY ENGINEER'S OFFICE
CITY HALL - SEVENTH FLOOR
455 NORTH MAIN STREET
WICHITA, KANSAS 67202
(316) 268-4501
(316) 268-4118 FAX

STANDARD TYPE 1-A
CURB INLET
OPENING = 150MM x 1.525MM

NEIL CABLE P.E. - CITY ENGINEER

PROJECT NUMBER: XXX-XXXXX INDEX CODE: XXXXXX

DATE: MAR 96 SHEET 26 OF 85