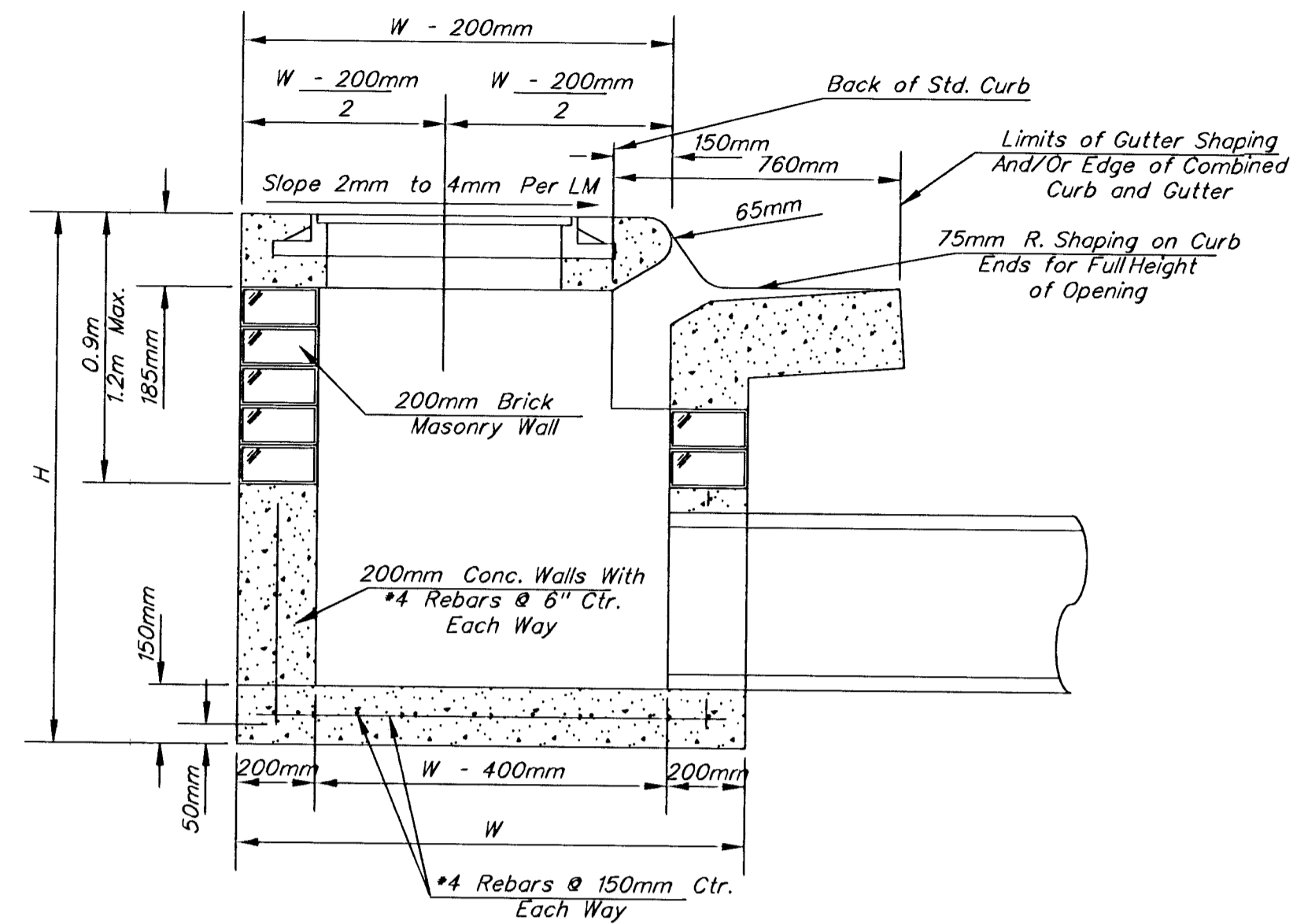
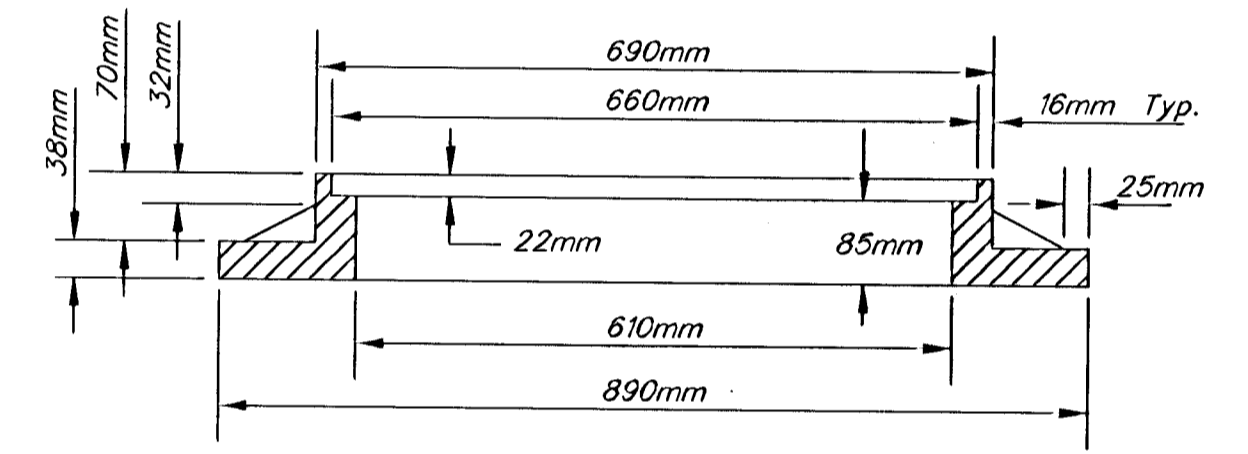
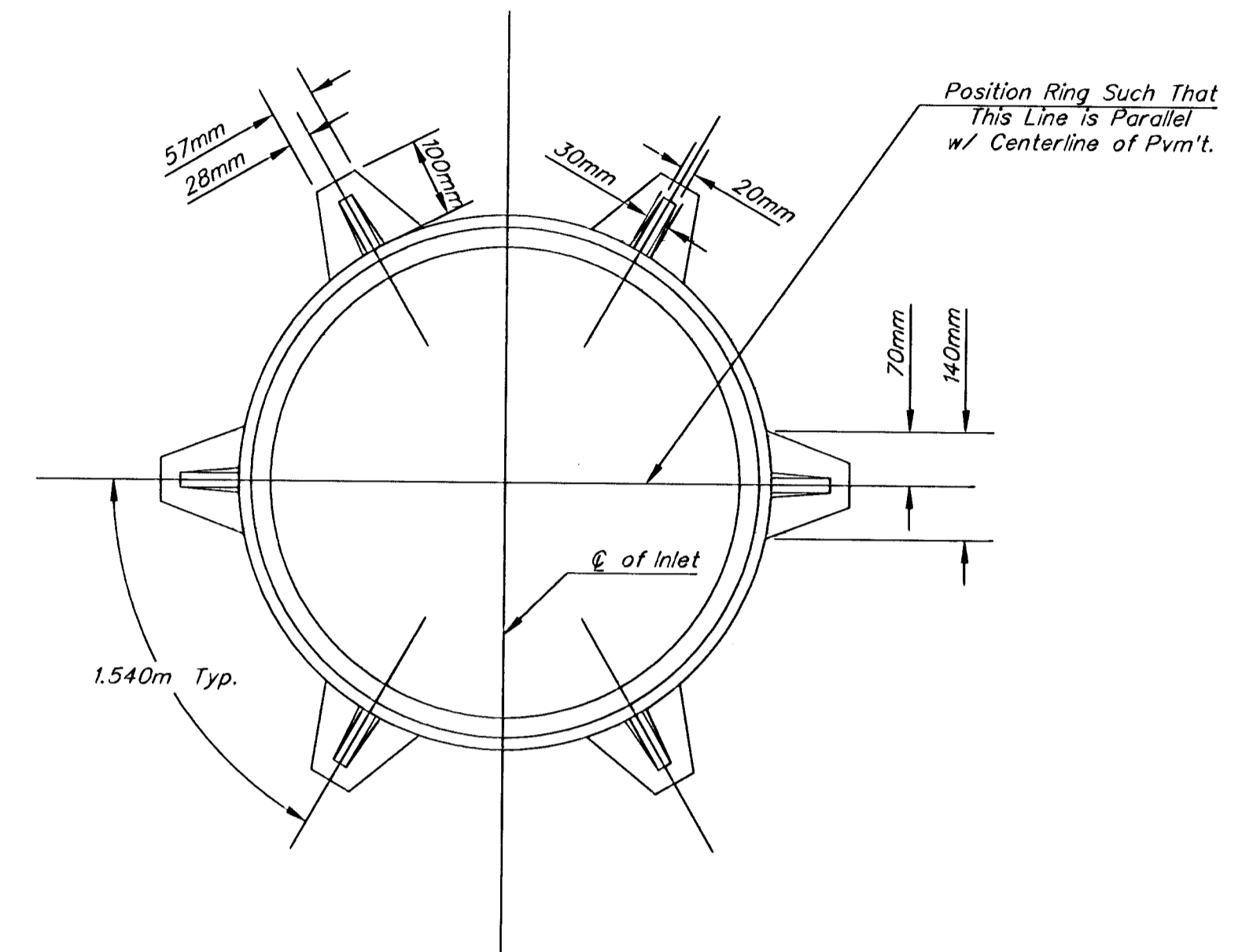


Notes:
 1. Inlet Top Reinforcing shall be Spaced on 152mm Max. Centers. Inlet Lids shall be Notched out as indicated to Facilitate Construction of Curb.
 2. b₃ Bar to be Field Bent to Clear Inlet Frame.

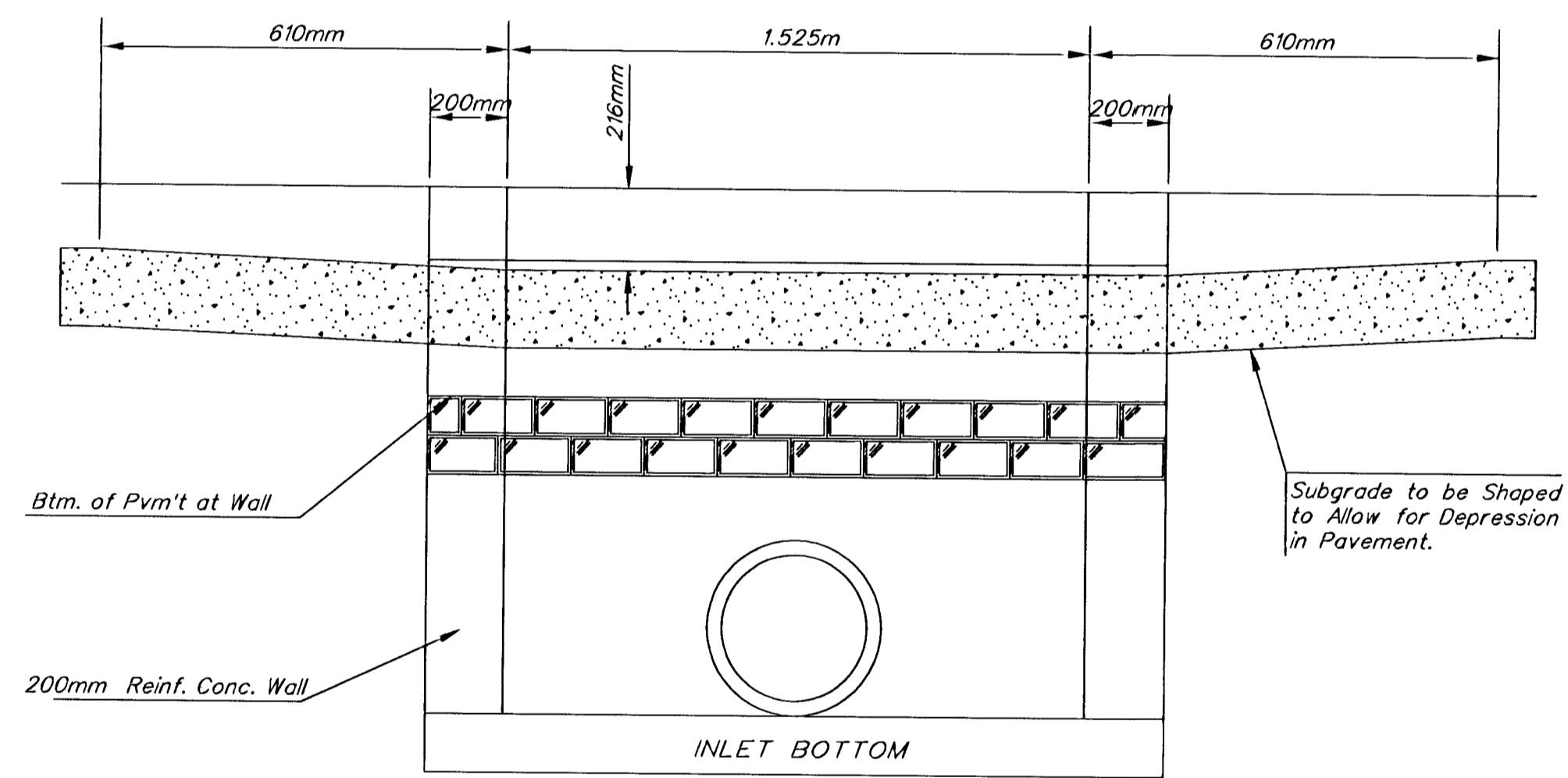


SECTION A-A

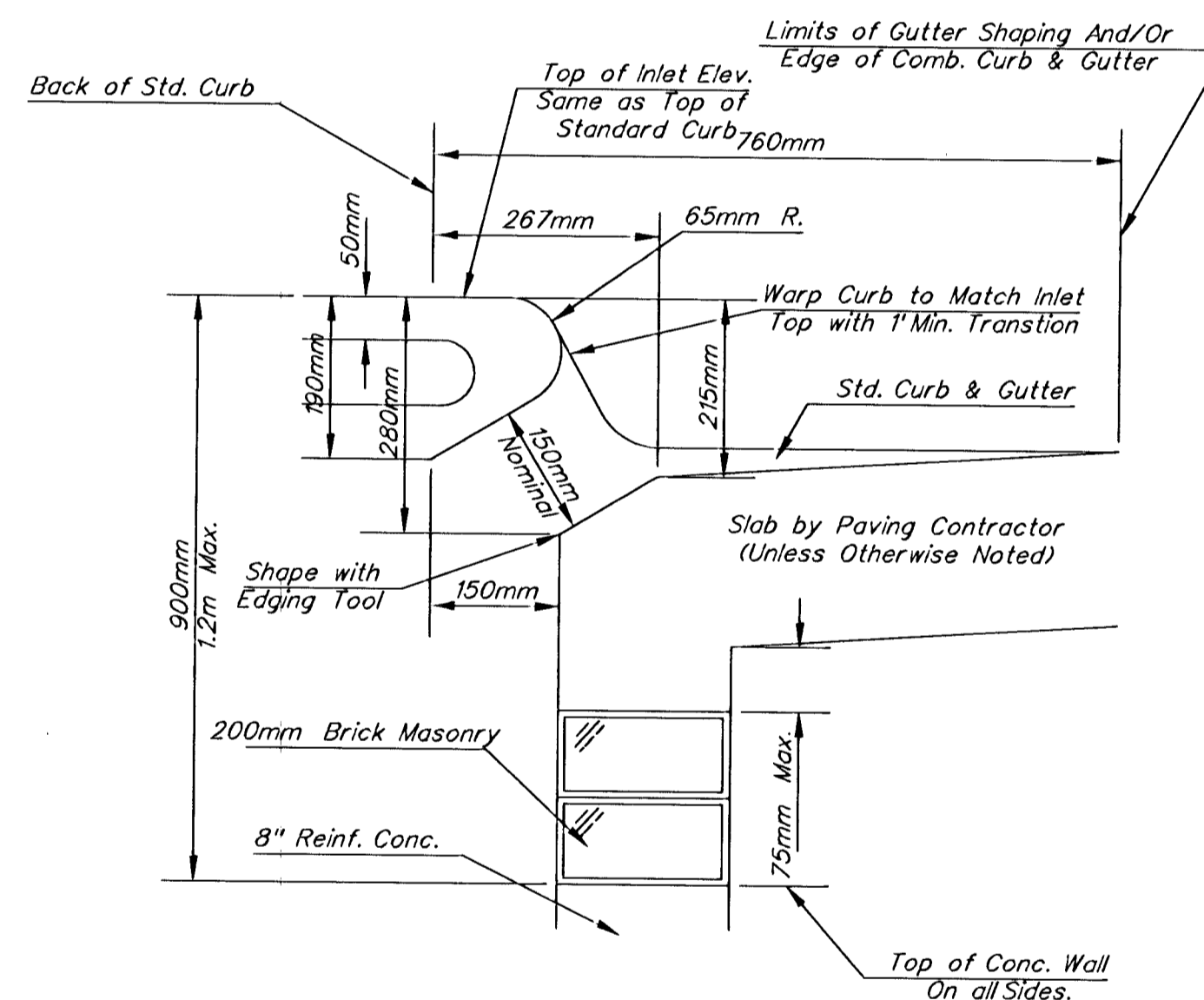


MANHOLE RING AND COVER

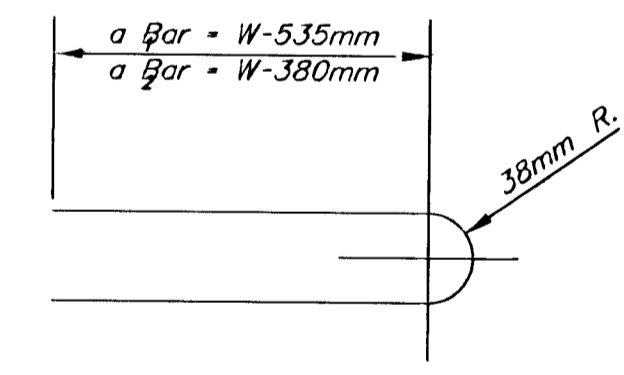
*See City of Wichita Standard Manhole Ring and Cover Detail Sheet for Cover Details to Be Used With Inlet Frame.



SECTION C-C



SECTION B-B



BENDING DIAGRAM

STEEL SCHEDULE

BAR	a ₁				a ₂				a ₃				Wt. Kg.
	1	2	3	4	1	2	3	4	1	2	3	4	
NUMBER	4	4	2	1	3	5	7	9	6	1	1		
SIZE	*4	*4	*4	*4	*4	*4	*4	*4	*4	*4	*6		
LENGTH	W-1.320m	1.700m	2.000m	1.220m	1.855m	-	-	-	0.535m	1.880m	1.420m	27.46	
	W-1.625m	2.310m	2.620m	1.525m	-	1.855m	-	-	0.535m	1.880m	1.420m	37.00	
	W-1.930m	2.920m	3.225m	1.830m	-	-	1.855m	-	0.535m	1.880m	1.420m	46.06	
	W-2.235m	3.530m	3.835m	2.135m	-	-	-	1.855m	0.535m	1.880m	1.420m	55.13	
	W-2.540m	4.140m	4.445m	2.440m	-	-	-	-	6'-1"	0.535m	1.880m	1.420m	64.20

Note: a₃ Bars to be Placed Approx. 51mm Below Top of Inlet Cover.

STANDARD CURB INLET PRECAST TOPS

W	PRE-CAST TOP SIZE	PIPE SIZE	Cu.M. CONG.
1.320m	1.120m 1.930m 2.290m	535mm" & SMALLER	0.290
1.625m	1.422m 1.930m 2.290m	600mm & 790mm	0.390
1.930m	1.727m 1.930m 2.290m	900mm & 1050mm	0.490
2.235m	2.032m 1.930m 2.290m	1250mm & 1375mm	0.590
2.540m	2.337m 1.930m 2.290m	1525mm & 1675mm	0.690

GENERAL NOTES

- Concrete tops to be installed on thin mortar cushion to insure full support along brick walls. Concrete tops may be cast in place or precast. Concrete used for inlet construction shall be concrete pavement mix.
- Contractor shall have the option of constructing 8" brick masonry walls between the concrete inlet base and top on this inlet when W-1.93m and H-2.13m or less.
- Inlet invert shall be shaped with 8 sack sand mix concrete to create flow channels and to increase hydraulic efficiency such that the inlet will be self cleaning between all inlet and/or outlet pipes.
- The ends of all pipes installed in inlets shall be cut off flush with the inside face of the inlet wall.

THE CITY OF WICHITA
 CITY ENGINEER'S OFFICE
 CITY HALL - SEVENTH FLOOR
 455 NORTH MAIN STREET
 WICHITA, KANSAS 67202
 (316) 268-4501
 (316) 268-4114 FAX

**STANDARD TYPE 1
 CURB INLET**
 OPENING = 150mm x 1.525m

M. E. LINDEBAK P.E. - CITY ENGINEER

PROJECT NUMBER XXX-XXXX	INDEX CODE XXXXXX
DATE MAR 96	SHEET 27 OF 85