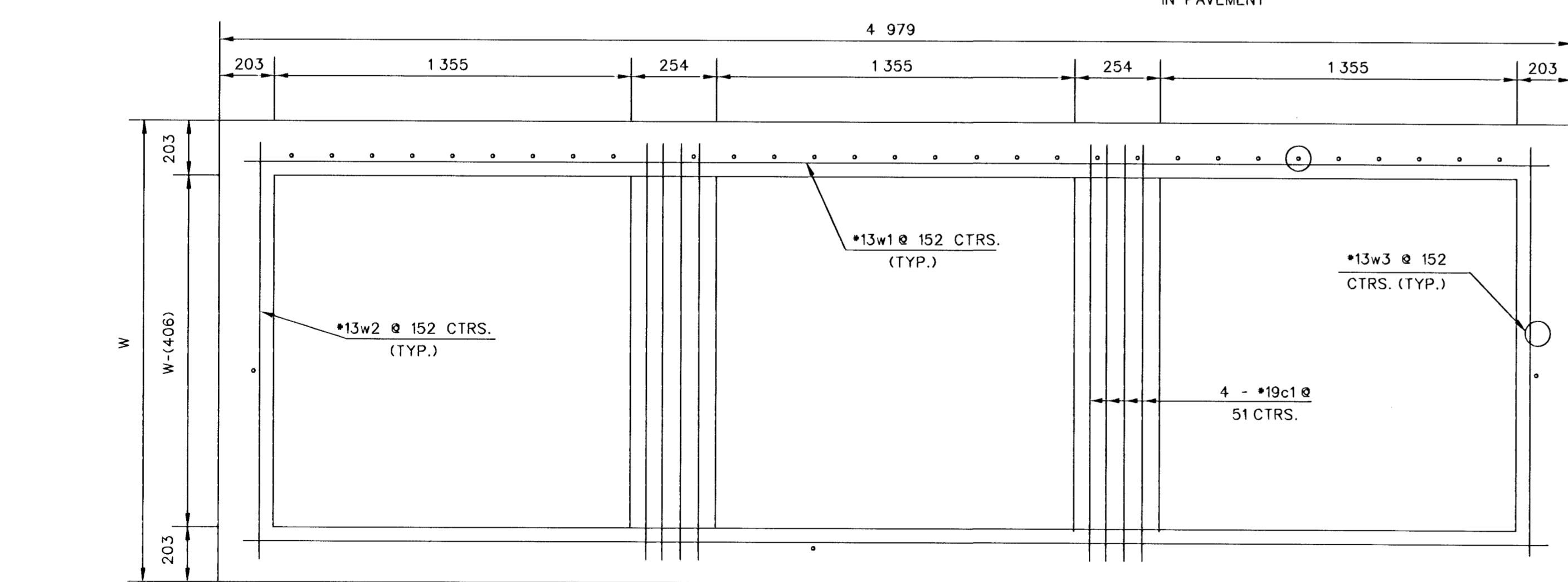


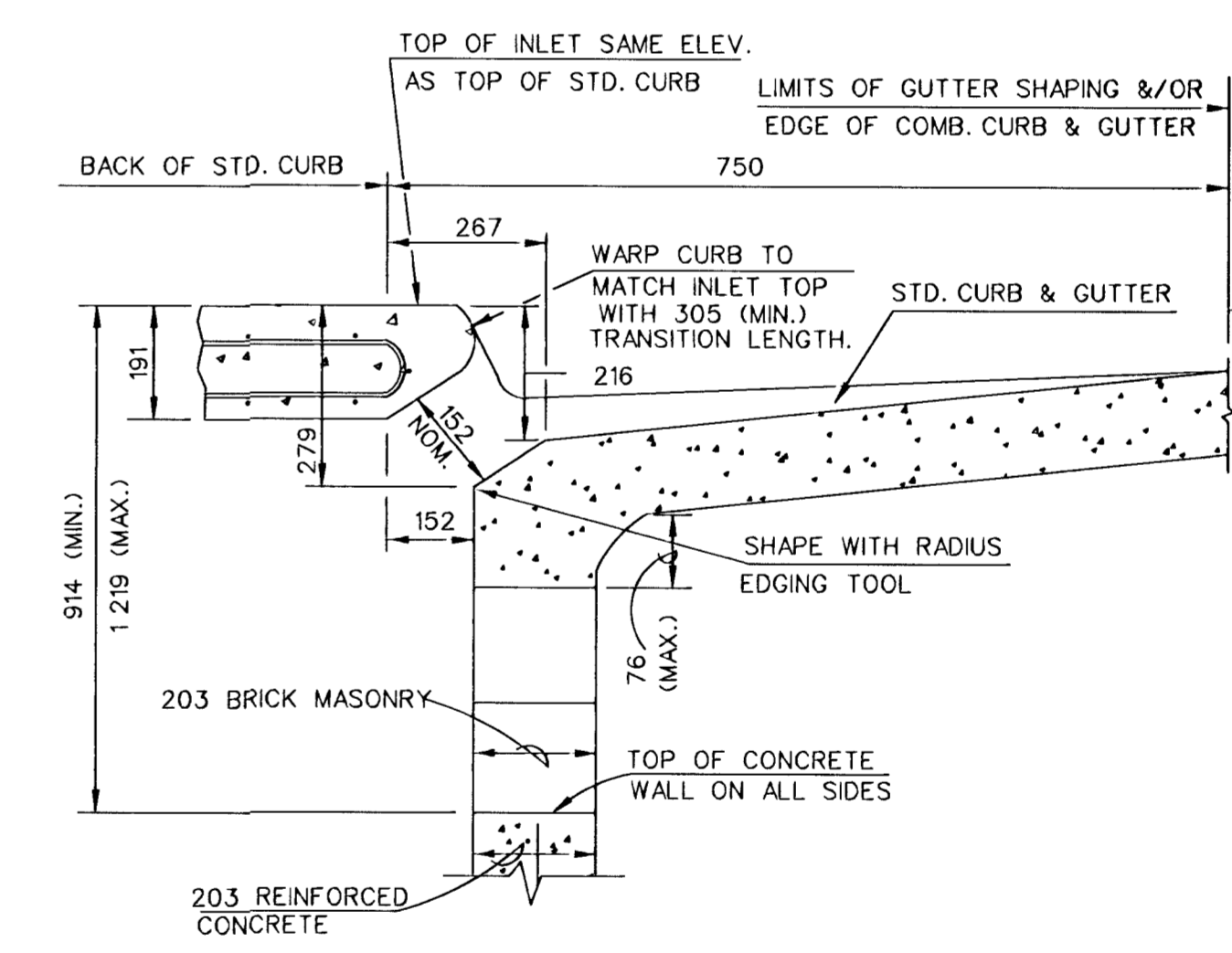
TYPICAL INLET SECTION AT CENTER WALL (REINFORCED CONCRETE WALLS)

TYPICAL INLET SECTION AT CENTER WALL (MASONRY WALLS)

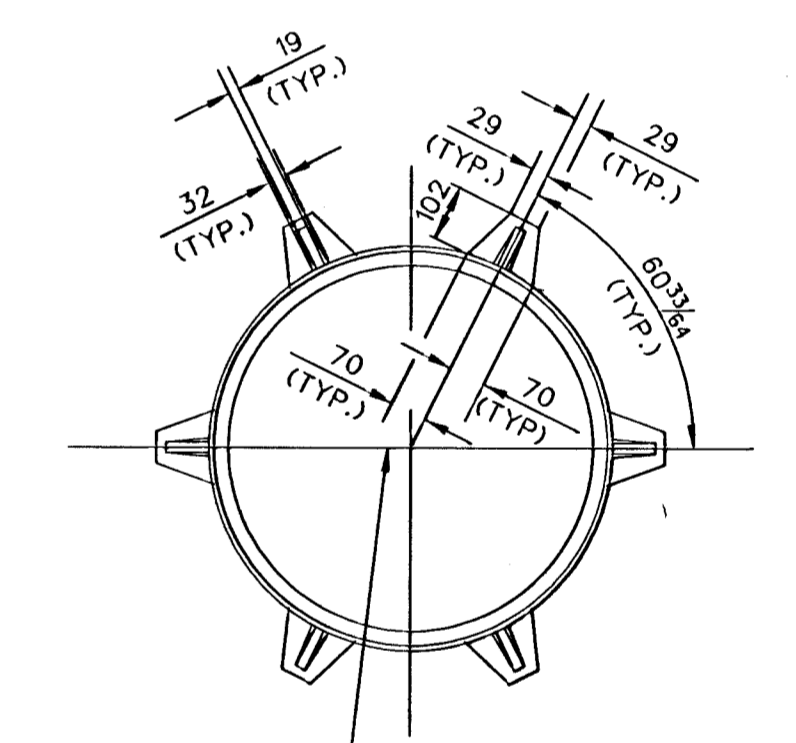


GENERAL NOTES

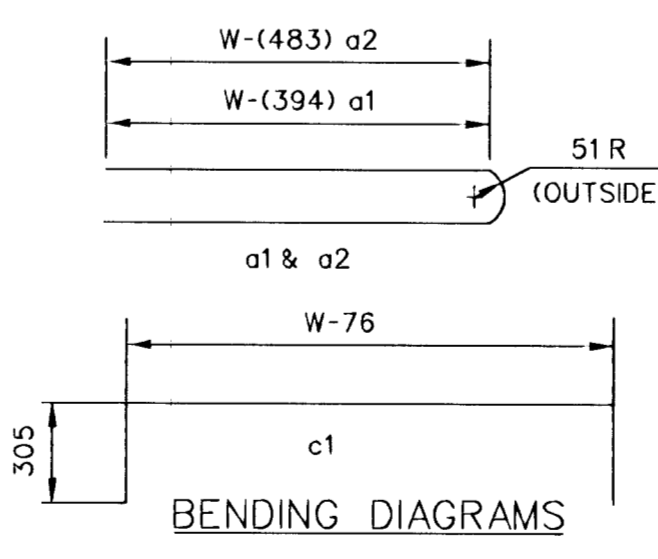
1. CONCRETE SHALL BE C.O.W. STANDARD PAVING MIX. ALL EXPOSED EDGES SHALL BE FINISHED WITH AN EDGING TOOL. REINFORCING BARS SHALL BE FIELD BENT OR CUT TO CLEAR PIPES. ALL BARS ARE #13 BARS AT 152 mm SPACING AND SHALL HAVE A MINIMUM CLEARANCE OF 38 mm UNLESS OTHERWISE NOTED. FLOORS OF INLET SHALL BE SHAPED WITH 8 SACK SAND MIX CONCRETE TO INCREASE HYDRAULIC EFFICIENCY SUCH THAT THE INLET WILL BE SELF CLEANING BETWEEN ALL INLET AND/OR OUTFALL PIPE(S). THE CONTRACTOR WILL BE REQUIRED TO CONSTRUCT 203 mm BRICK MASONRY WALLS BETWEEN THE CONCRETE INLET BASE AND TOP ON THIS INLET WHEN H > 2 134 mm OR LESS AND W > 1930 mm OR LESS.
2. THE ENDS OF ALL PIPES INSTALLED IN INLETS SHALL BE CUT OFF FLUSH WITH THE INSIDE FACE OF THE INLET WALL.



SECTION C-C



INLET FRAME



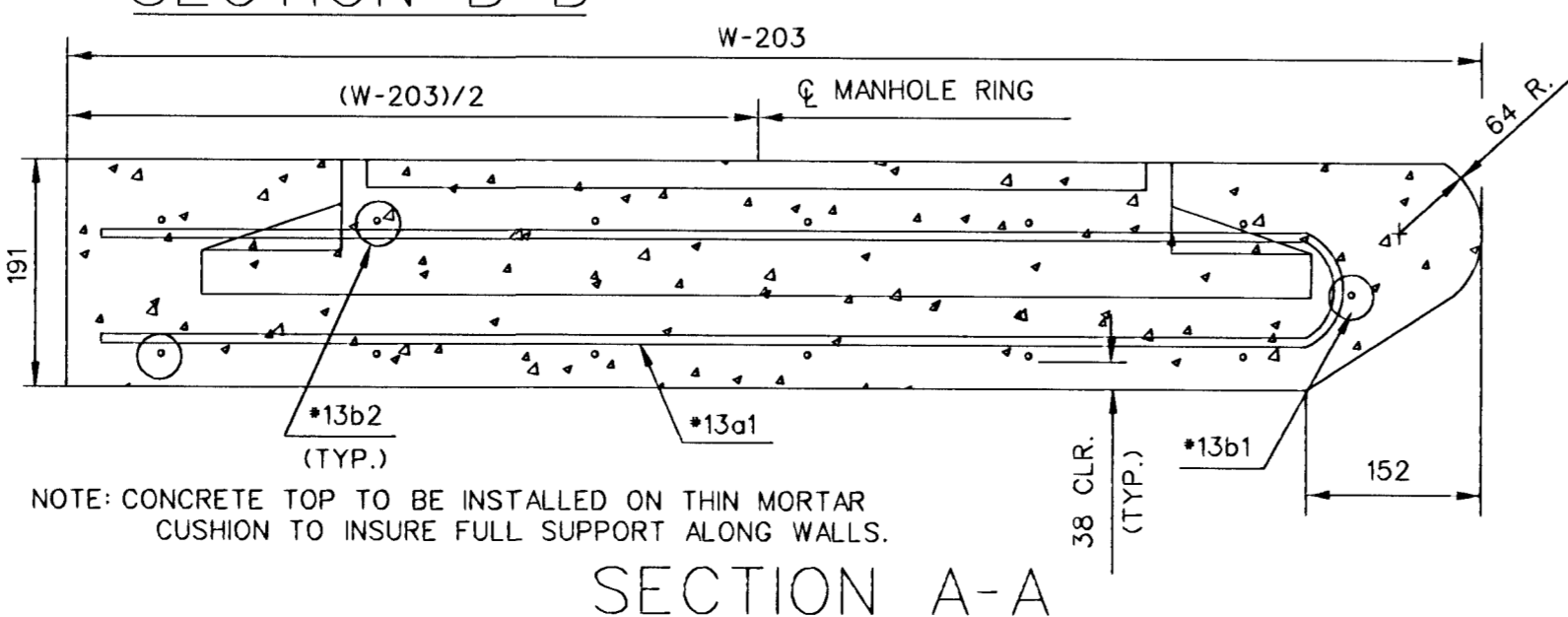
SLAB AND FLOOR REINFORCING

| MARK | SIZE | W-1 321 |        | W-1 626 |        | W-1 930 |        | W-2 235 |        | W-2 540 |        |
|------|------|---------|--------|---------|--------|---------|--------|---------|--------|---------|--------|
|      |      | NO.     | LENGTH | NO.     | LENGTH | NO.     | LENGTH | NO.     | LENGTH | NO.     | LENGTH |
| a1   | #13  | 20      | 2 013  | 20      | 2 623  | 20      | 3 232  | 20      | 3 842  | 20      | 4 451  |
| a2   | #13  | 2       | 1 829  | 2       | 2 438  | 2       | 3 048  | 2       | 3 658  | 2       | 4 267  |
| a3   | #13  | 33      | 1 245  | 33      | 1 549  | 33      | 1 854  | 33      | 2 159  | 33      | 2 464  |
| b1   | #13  | 1       | 4 496  | 1       | 4 496  | 1       | 4 496  | 1       | 4 496  | 1       | 4 496  |
| **b2 | #13  | 18      | 4 902  | 24      | 4 902  | 30      | 4 902  | 36      | 4 902  | 42      | 4 902  |

WALL REINFORCING

| MARK | SIZE | W-1 321 |        | W-1 626 |        | W-1 930 |        | W-2 235 |        | W-2 540 |        |
|------|------|---------|--------|---------|--------|---------|--------|---------|--------|---------|--------|
|      |      | NO.     | LENGTH | NO.     | LENGTH | NO.     | LENGTH | NO.     | LENGTH | NO.     | LENGTH |
| c1   | #19  | 8       | 1 854  | 8       | 2 159  | 8       | 2 464  | 8       | 2 769  | 8       | 3 073  |
| w1   | #13  | ①       | 4 902  | ①       | 4 902  | ①       | 4 902  | ①       | 4 902  | ①       | 4 902  |
| w2   | #13  | ①       | 1 245  | ①       | 1 549  | ①       | 1 854  | ①       | 2 159  | ①       | 2 464  |
| w3   | #13  | ②       |        | ②       |        | ②       |        | ②       |        | ②       |        |

| STANDARD CURB INLET PRECAST TOPS |                     |               |                      |
|----------------------------------|---------------------|---------------|----------------------|
| W                                | PRE-CAST TOP SIZE   | PIPE SIZE     | m <sup>3</sup> CONC. |
| 1 321                            | 1 118 x 3 454 x 191 | 530 & SMALLER | 3/64 0.63            |
| 1 626                            | 1 422 x 3 454 x 191 | 600 & 750     | 3/64 0.83            |
| 1 930                            | 1 727 x 3 454 x 191 | 900 & 1 050   | 3/64 1.03            |
| 2 235                            | 2 032 x 3 454 x 191 | 1 200 & 1 350 | 3/64 1.23            |
| 2 540                            | 2 337 x 3 454 x 191 | 1 500 & 1 675 | 3/64 1.43            |



SECTION A-A

REVISED: 12-21-1984

STANDARD TYPE 1 CURB INLET  
INLET OPENING-152 x 4 573

G:\CIVIL\99257\SWIS\6x15-15.DWG